



**Allostock**  
Booth Bed Lane



# Allostock, WA16 9NN

## Booth Bed Lane

£795,000



### The Property

This beautifully presented four-bedroom, two bathroom detached barn was converted in recent years to now offer light, spacious and flexible living accommodation blending character features and modern convenience effortlessly. Particular mention must be made of stunning Dining Kitchen with island unit and bi-fold doors to the garden, the master bedroom suite with en-suite shower room and dressing room as well as the study with bespoke fitted furniture and useful home office/workshop or potential outdoor kitchen attached to the car barn. Located in a semi-rural position on the edge of the village with views over adjoining countryside, in close proximity to Knutsford and Holmes Chapel centres whilst being ideally positioned for all major network links to the Northwest and beyond. The property is approached through timber electric gates over large shingle driveway, providing ample off-road parking, leading to the detached car barn and front entrance with feature planting in generous

borders, enclosed by brick elevations and mature hedging. The rear gardens are a lovely feature of the property, being generous in proportions with an open aspect over adjoining countryside. Laid to lawn in the main with borders surrounding and large flagged patio area, ideal for alfresco dining and enjoying the pleasant aspect. There is also an enclosed vegetable patch in raised beds to one side with brick flower beds and an additional rear courtyard style garden enclosed by timber fencing.

### Directions

From Knutsford Town Centre proceed along Toft Road (A50) which continues into Holmes Chapel Road for approximately 4 miles. Turn left into Booth Bed Lane where the property will soon be seen on your left.

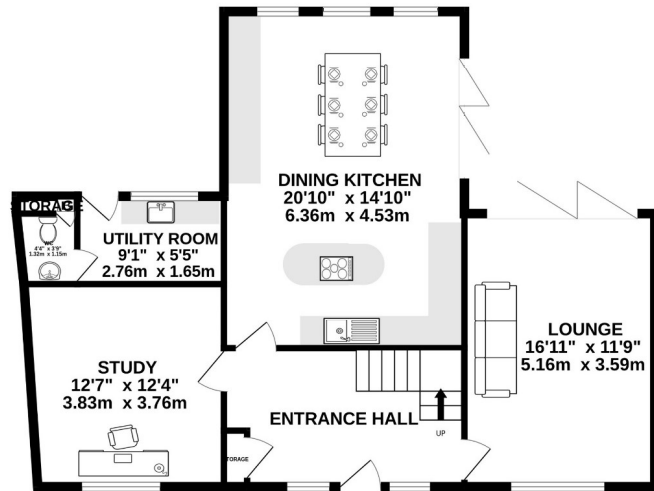


- A beautifully presented detached property
- Spacious & flexible living accommodation
- Four generous bedrooms
- Two bathrooms (one en-suite with dressing room)
- Lovely enclosed gardens
- Gated driveway
- Detached car barn with workshop/outdoor kitchen

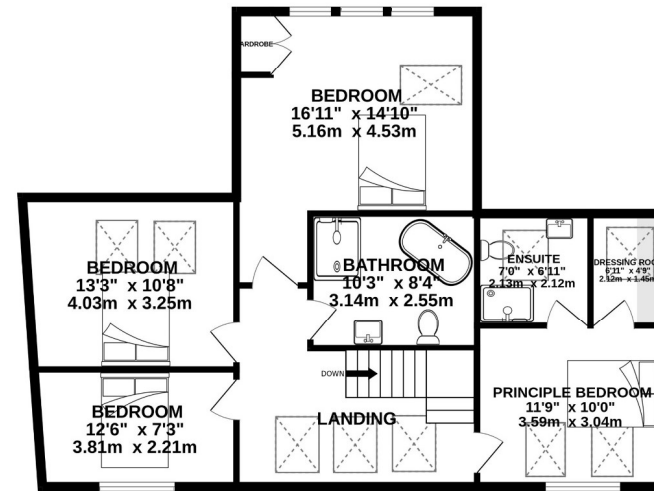
**Postcode** – WA16 9NN  
**EPC Rating** – D  
**Tenure** – Freehold  
**Local Authority** – Cheshire West & Chester  
**Council Tax** – Band G



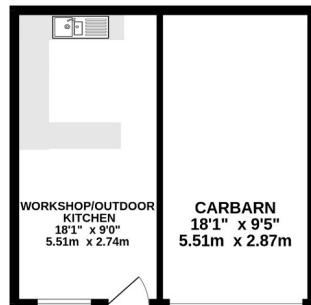
GROUND FLOOR  
855 sq.ft. (79.4 sq.m.) approx.



1ST FLOOR  
862 sq.ft. (80.1 sq.m.) approx.



OUTBUILDING  
333 sq.ft. (30.9 sq.m.) approx.



TOTAL FLOOR AREA : 2050 sq.ft. (190.4 sq.m.) approx.

Whilst every attempt has been made to ensure the accuracy of the floorplan contained here, measurements of doors, windows, rooms and any other items are approximate and no responsibility is taken for any error, omission or mis-statement. This plan is for illustrative purposes only and should be used as such by any prospective purchaser. The services, systems and appliances shown have not been tested and no guarantee as to their operability or efficiency can be given.  
Made with Metropix ©2024

103 King Street, Knutsford, Cheshire, WA16 6EQ

01565 654 000

E: [info@irlamsestateagents.co.uk](mailto:info@irlamsestateagents.co.uk)

[www.irlamsestateagents.co.uk](http://www.irlamsestateagents.co.uk)

I1021\_ Printed by Ravensworth 01670 713330

Irlams (Estate Agents) Ltd for themselves and for the vendors or lessors of this property whose agents they are give notice that:

- The particulars are set out as a general outline only for the guidance of intending purchasers or lessees, and do not constitute, nor constitute part of, an offer or contract;
- All descriptions, dimensions, references to condition and necessary permissions for use and occupation, and other details are given in good faith and are believed to be correct but any intending purchasers or lessees should not rely on them as statements or representations of fact, but must satisfy themselves by inspection or otherwise as to the correctness of each of them;
- No person in the employment of Irlams (Estate Agents) Ltd has any authority to make or give any representation or warranty whatsoever in relation to this property.

