



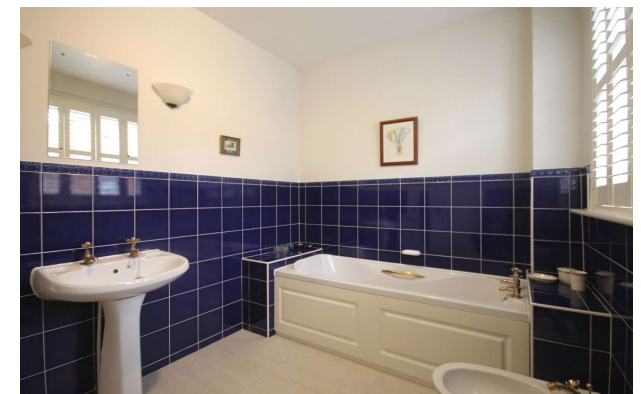
Tabley
The Stables, Tabley Hall Estate



Tabley, WA16 0HA

The Stables, Tabley Hall Estate

£550,000



The Property

This beautifully presented three-bedroom, two-bathroom mews house has been sympathetically maintained and improved over the years by the current owners to now provide light, spacious and flexible living accommodation incorporating character features and modern convenience. Particular mention must be made of the stunning main reception space with high ceilings, large sash windows overlooking the gardens and feature fireplace, the principal bedroom suite with fitted wardrobes and full en-suite bathroom as well as the breakfast kitchen with fitted appliances and Juliet balcony from the landing overlooking the courtyard.

Located in a super position within the Tabley Hall Estate, forming an exclusive courtyard development of similar properties with far reaching views over communal grounds whilst being ideally positioned for access to Knutsford Town centre and all major network links to the Northwest and beyond.

The development is approached over a long sweeping driveway leading through the grounds of the estate to the communal parking area and garages. The property forms a courtyard development with stone pathways, landscaped with feature planting and mature trees. The property has its own pretty rear garden which is ideally located with views over the communal grounds that also leads to a walled garden with communal BBQ facilities and tennis court. The residents can enjoy walks around the established grounds, which include well maintained formal gardens, woodland, a small lake and parkland. The property also benefits from allocated and visitor parking and a lock up garage.

Directions

From the roundabout in Knutsford proceed along Northwich Road (A50) and turn left into the Tabley House grounds and follow the lane round to The Stables entrance.

- A beautifully presented mews property
- Situated in a super position within the Tabley Hall Estate
- Spacious living accommodation
- Three bedrooms
- Two bathrooms (one en-suite)
- Private enclosed garden with views over the extensive communal grounds
- Garage & off road parking

Postcode – WA16 0HA

EPC Rating – C

Tenure – Leasehold

(140 year Lease

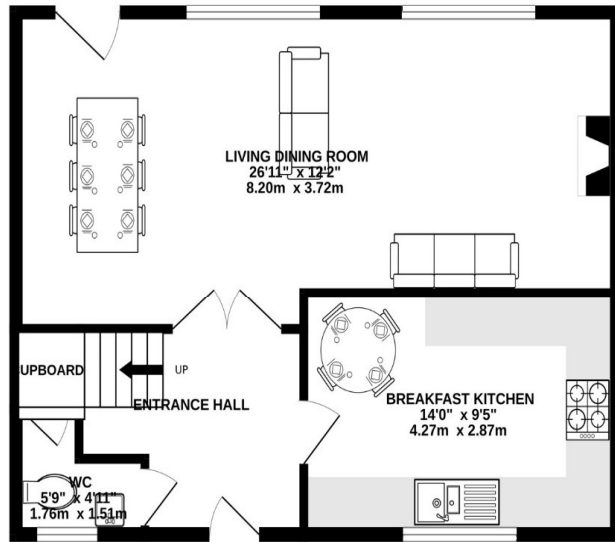
Service Charge £210pcm incl Ground Rent)

Local Authority – Cheshire East

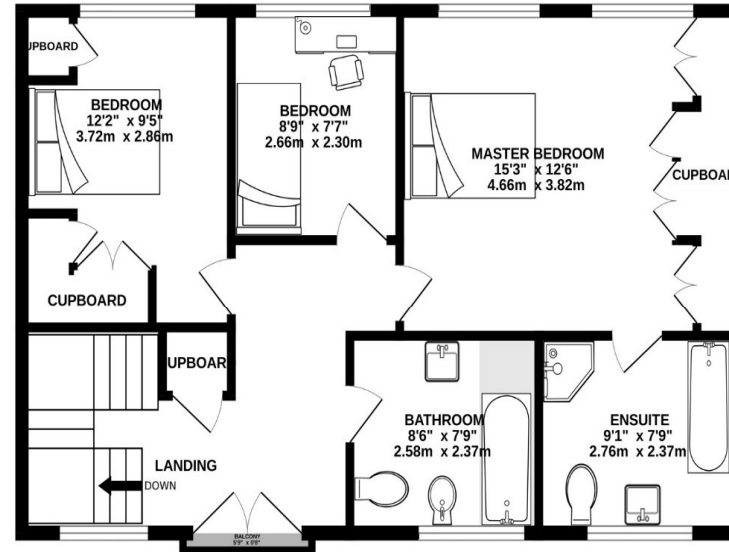
Council Tax – Band F



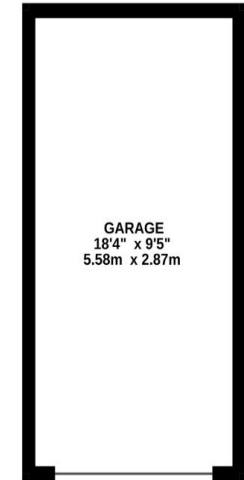
GROUND FLOOR
551 sq.ft. (51.2 sq.m.) approx.



1ST FLOOR
665 sq.ft. (61.9 sq.m.) approx.



EXTERNALLY
173 sq.ft. (16.0 sq.m.) approx.



TOTAL FLOOR AREA : 1388 sq.ft. (129.0 sq.m.) approx.

Whilst every attempt has been made to ensure the accuracy of the floorplan contained here, measurements of doors, windows, rooms and any other items are approximate and no responsibility is taken for any error, omission or mis-statement. This plan is for illustrative purposes only and should be used as such by any prospective purchaser. The services, systems and appliances shown have not been tested and no guarantee as to their operability or efficiency can be given.

Made with Metropix ©2024

103 King Street, Knutsford, Cheshire, WA16 6EQ

01565 654 000

E: info@irlamsestateagents.co.uk

www.irlamsestateagents.co.uk

I1021_ Printed by Ravensworth 01670 713330

Irlams (Estate Agents) Ltd for themselves and for the vendors or lessors of this property whose agents they are give notice that:

- (a) The particulars are set out as a general outline only for the guidance of intending purchasers or lessees, and do not constitute, nor constitute part of, an offer or contract;
- (b) All descriptions, dimensions, references to condition and necessary permissions for use and occupation, and other details are given in good faith and are believed to be correct but any intending purchasers or lessees should not rely on them as statements or representations of fact, but must satisfy themselves by inspection or otherwise as to the correctness of each of them;
- (c) No person in the employment of Irlams (Estate Agents) Ltd has any authority to make or give any representation or warranty whatsoever in relation to this property.

