

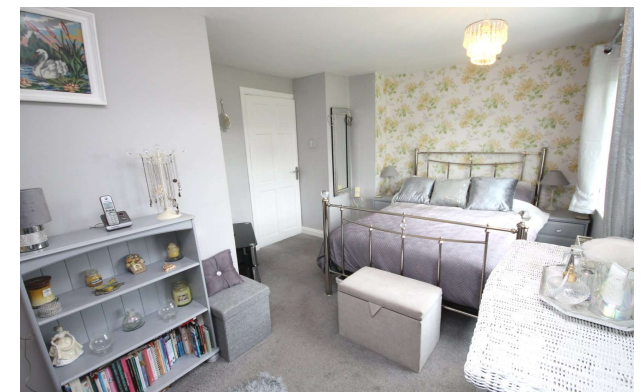


Mobberley
Pedley House Lane

Mobberley, WA16 7AS

Pedley House Lane

Offers Over £599,950



The Property

This charming three-bedroom semi-detached property has been much extended and refurbished by the current vendors to now offer light, spacious and flexible living accommodation, blending character features with modern convenience. Particular mention must be made of the large reception space to the ground floor with additional conservatory allowing a flood of natural light into the room, spacious dining kitchen with fitted appliances, the master bedroom with well-appointed en-suite bathroom as well as the immaculately maintained gardens with open countryside views.

Located in an ever-popular position on a leafy country lane with views over adjoining countryside, a short walk to the Frozen Mop Public House and CSPACE health club whilst being ideally positioned for all major network links to the Northwest and beyond.

The property is approached over a private gated driveway, providing more than ample parking, leading past the lawned front garden with feature planting and mature foliage to the front entrance and past the

property to a detached tandem garage at the rear. The rear gardens are a lovely feature of the property, being generous in proportions with an open, private aspect, adjoining open countryside views. Laid to lawn in the main with well stocked borders surrounding, containing a wealth of mature plants and foliage, augmented by feature pond and fully enclosed by established trees and hedging. Large patio area sweeps around the rear of the property, accessed via the main reception rooms, ideal for alfresco dining and enjoying the beautiful aspect.

Directions

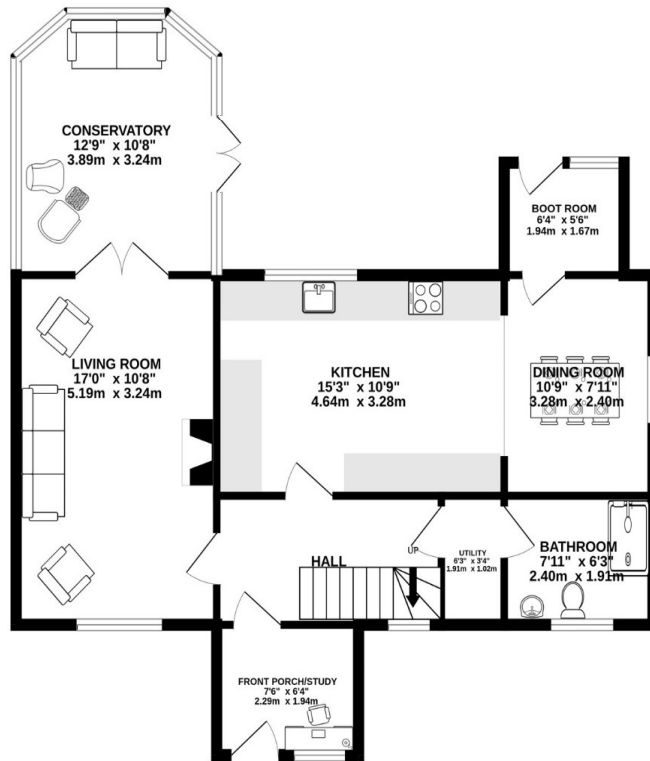
From Knutsford Town centre turn left passing the Rail Station down Adams Hill (A537) & continue along Chelford Road for approx. 2 miles. After passing The Dun Cow public house turn left onto Marthall Lane and take the left turn onto Pedley Lane which continues into Pedley House Lane where the property will soon be seen on your left.

- A charming three bedroom semi-detached property
- Lovely semi-rural location overlooking open countryside
- Spacious flexible living accommodation
- Dining kitchen with integrated appliances
- Three bedrooms
- Three bathrooms (one en-suite)
- Stunning gardens with lawn, pond and patio areas
- Gated driveway providing ample off road parking
- Detached tandem garage

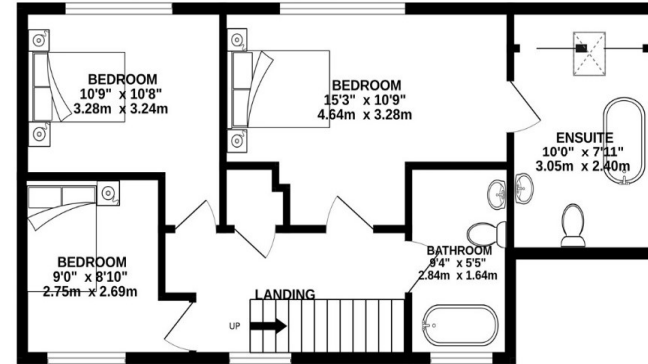
Postcode – WA16 7AS
EPC Rating – E
Tenure – Freehold
Local Authority – Cheshire East
Council Tax – Band D



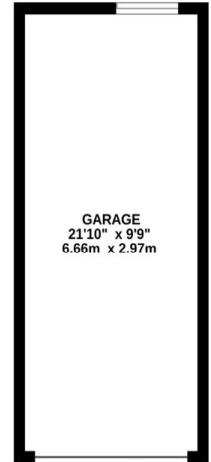
GROUND FLOOR
782 sq.ft. (72.6 sq.m.) approx.



1ST FLOOR
534 sq.ft. (49.6 sq.m.) approx.



GARAGE
213 sq.ft. (19.8 sq.m.) approx.



TOTAL FLOOR AREA : 1529 sq.ft. (142.0 sq.m.) approx.

Whilst every attempt has been made to ensure the accuracy of the floorplan contained here, measurements of doors, windows, rooms and any other items are approximate and no responsibility is taken for any error, omission or mis-statement. This plan is for illustrative purposes only and should be used as such by any prospective purchaser. The services, systems and appliances shown have not been tested and no guarantee as to their operability or efficiency can be given.

Made with Metropix ©2023

103 King Street, Knutsford, Cheshire, WA16 6EQ

01565 654 000

E: info@irlamsestateagents.co.uk

www.irlamsestateagents.co.uk

I1021_ Printed by Ravensworth 01670 713330

Irlams (Estate Agents) Ltd for themselves and for the vendors or lessors of this property whose agents they give notice that:

- (a) The particulars are set out as a general outline only for the guidance of intending purchasers or lessees, and do not constitute, nor constitute part of, an offer or contract;
- (b) All descriptions, dimensions, references to condition and necessary permissions for use and occupation, and other details are given in good faith and are believed to be correct but any intending purchasers or lessees should not rely on them as statements or representations of fact, but must satisfy themselves by inspection or otherwise as to the correctness of each of them;
- (c) No person in the employment of Irlams (Estate Agents) Ltd has any authority to make or give any representation or warranty whatsoever in relation to this property.

