



Mobberley

Barclay Hall, Barclay Park, Hall Lane





Mobberley, WA16 7DZ

Barclay Hall, Barclay Park, Hall Lane
£240,000



The Property

This beautiful ground floor garden apartment forms part of a gorgeous development of similar properties for the over 55's. Sitting in stunning grounds on the outskirts of Mobberley Village, the development enjoys a stunning country aspect whilst being conveniently positioned for access to Knutsford, Alderley Edge and Wilmslow, with fabulous country walks on the doorstep. The apartment itself comes immaculately presented throughout, with modern fixtures and fittings perfectly blended with the period stylings of the Hall. Particular mention must be made of the large, open-plan living dining kitchen with its bay window perfectly positioned with views along the centre of the gardens, and allowing streams of natural light to pour in.

The grand communal hallway is well maintained, and residents enjoy the use of a lovely communal lounge, kitchen and laundry room.

The property sits in simply stunning communal grounds, with lawn and car parking to the front, and manicured and landscaped gardens to the rear. All well-stocked with mature shrubs, flowers and trees, offering a beautiful and tranquil aspect for walks and al fresco dining.

Directions

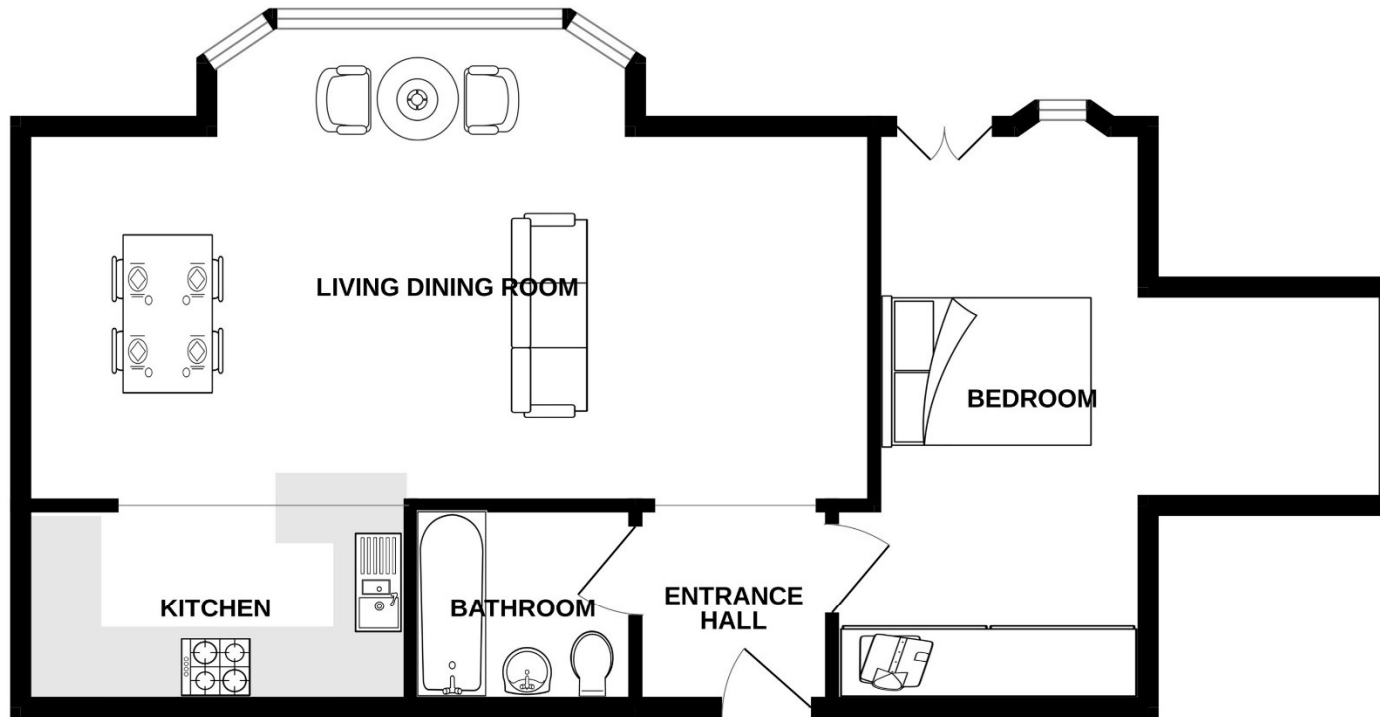
From Knutsford Town Centre head south east towards Chelford and turn left at the traffic lights turn left onto Hollow Lane which becomes Mobberley Road. Follow Mobberley Road out of Knutsford and through Mobberley Village for approx. 3 miles on to Hall Lane. Continue past Mobberley Victory Hall Memorial Club and, after a short distance, the entrance to Barclay Hall can be found on the left-hand side, sign posted Cranford Grange.

- A beautiful and modern ground floor garden apartment for the over 55's
- Ideally located for Knutsford, Wilmslow & Alderley Edge
- Beautiful grounds extending to around 5 acres
- Communal lounge, library, laundry room and overnight guest suite
- Open-plan living dining kitchen with bay window and fantastic views over the grounds
- Bedroom with French windows leading out onto the gardens
- Ample parking for residents and visitors

Postcode – WA16 7DZ
EPC Rating – D
Tenure – Leasehold
Local Authority – Cheshire East
Council Tax – Band C
Ground Rent – £3,174.28 per annum
Service Charge – Included



GROUND FLOOR
607 sq.ft. (56.4 sq.m.) approx.



TOTAL FLOOR AREA : 607 sq.ft. (56.4 sq.m.) approx.

Whilst every attempt has been made to ensure the accuracy of the floorplan contained here, measurements of doors, windows, rooms and any other items are approximate and no responsibility is taken for any error, omission or mis-statement. This plan is for illustrative purposes only and should be used as such by any prospective purchaser. The services, systems and appliances shown have not been tested and no guarantee as to their operability or efficiency can be given.
Made with Metropix ©2023

103 King Street, Knutsford, Cheshire, WA16 6EQ

01565 654 000

E: info@irlamsestateagents.co.uk

www.irlamsestateagents.co.uk

I1021_ Printed by Ravensworth 01670 713330

Irlams (Estate Agents) Ltd for themselves and for the vendors or lessors of this property whose agents they are give notice that:

- The particulars are set out as a general outline only for the guidance of intending purchasers or lessees, and do not constitute, nor constitute part of, an offer or contract;
- All descriptions, dimensions, references to condition and necessary permissions for use and occupation, and other details are given in good faith and are believed to be correct but any intending purchasers or lessees should not rely on them as statements or representations of fact, but must satisfy themselves by inspection or otherwise as to the correctness of each of them;
- No person in the employment of Irlams (Estate Agents) Ltd has any authority to make or give any representation or warranty whatsoever in relation to this property.

