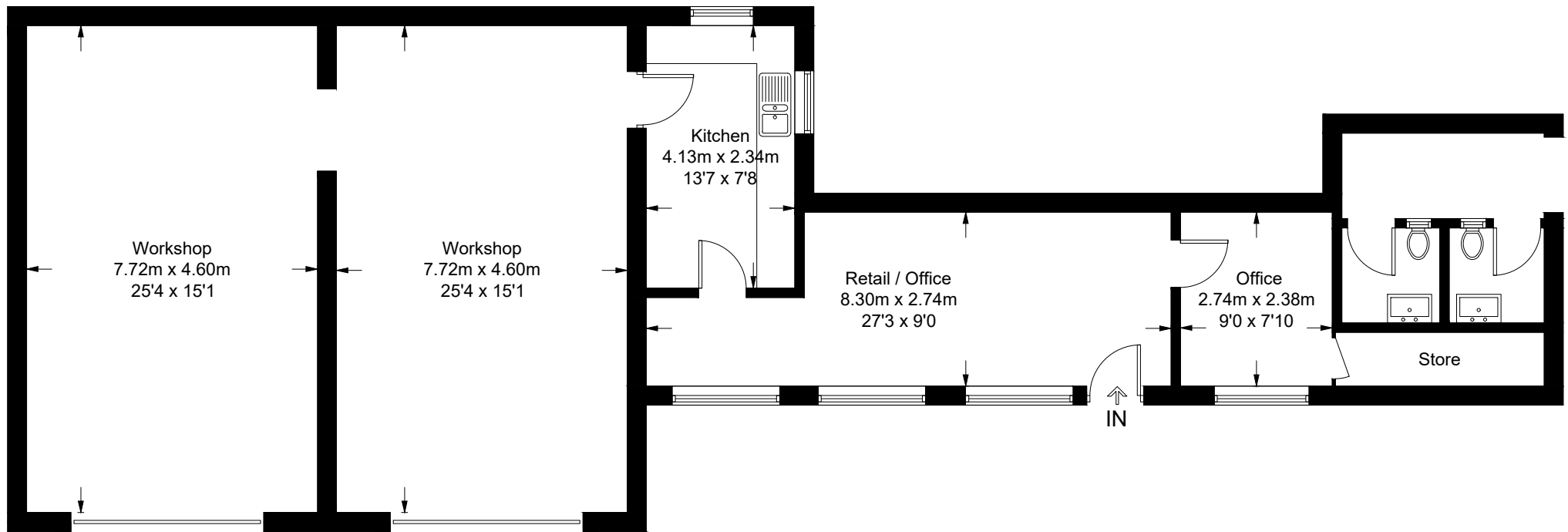


# Ufton Garage, Southam St, Ufton, CV33 9PF

Approximate Gross Internal Area = 125 sq m / 1345 sq ft



**Ground Floor**

This plan is for layout guidance only. Not drawn to scale unless stated. Windows and door openings are approximate. Whilst every care is taken in the preparation of this plan, please check all dimensions, shapes and compass bearings before making any decisions reliant upon them.