



## Canal Quay

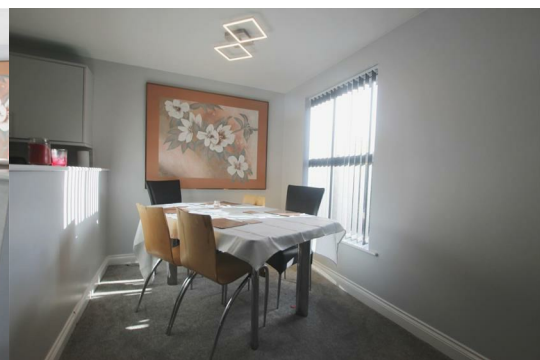
Britannia Wharf, Bingley, BD16 2NP

£850 Per Calendar Month



### \*CANAL SIDE APARTMENT\*

Situated by the Leeds/ Liverpool canal, this two bedroom apartment is finished to a high standard and briefly comprises; entrance hallway, spacious living area with Juliet balcony over looking the canal, dining area, modern kitchen, master bedroom, en-suite shower room, second bedroom and modern bathroom suite. The property benefits from an allocated parking space and intercom entry system. EPC Rating C.



**ENTRANCE HALL**  
With grey carpet, grey painted walls, electric wall heater, cupboard and two light points.

**LIVING AREA**  
With grey carpet, grey painted walls, Juliet balcony, wall heater and light point.

**DINING AREA**  
With grey carpet, grey painted walls, electric wall heater and light point.

**KITCHEN**  
With wood effect vinyl flooring, grey tiles walls, grey painted walls, grey kitchen units, wooden worktops, stainless steel sink with mixer tap, integral oven and hob, extractor hood, integral fridge freezer, integral dishwasher, integral washer/dryer and light fitting.

**MASTER BEDROOM**  
With grey carpet, grey painted walls, built in wardrobes, wall heater and light point.

**EN-SUITE SHOWER ROOM**  
With grey carpet, part white tiled walls, part grey painted walls, white WC, white hand basin, shower cubicle with mixer shower, heated towel ladder, extractor fan and dome light fitting.

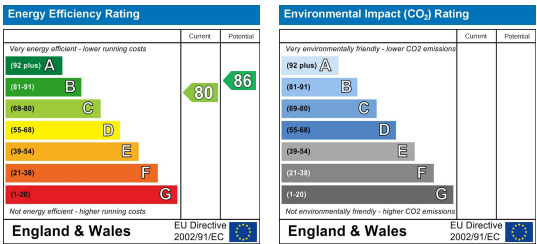
**BEDROOM TWO**  
With grey carpet, grey painted walls, built in wardrobes, wall heater and light point.

**BATHROOM**  
With grey carpet, part white tiled walls, part grey painted walls, three piece bathroom suite, shower attachment, heated towel ladder, extractor fan and dome light fitting.

Area Map



Energy Efficiency Graph



These particulars are intended to give a fair and reliable description of the property but no responsibility for any inaccuracy or error can be accepted and do not constitute an offer or contract. We have not tested any services or appliances (including central heating if fitted) referred to in these particulars and the purchasers are advised to satisfy themselves as to the working order and condition. If a property is unoccupied at any time there may be reconnection charges for any switched off/disconnected or drained services or appliances - All measurements are approximate. **THINKING OF SELLING?** If you are thinking of selling your home or just curious to discover the value of your property, Hunters would be pleased to provide free, no obligation sales and marketing advice. Even if your home is outside the area covered by our local offices we can arrange a Market Appraisal through our national network of Hunters estate agents.