

HUNTERS[®]

HERE TO GET *you* THERE



Weavers Lane, Cullingworth

£1,050 Per Calendar Month



Weavers Lane, Cullingworth

£1,050 Per Calendar Month



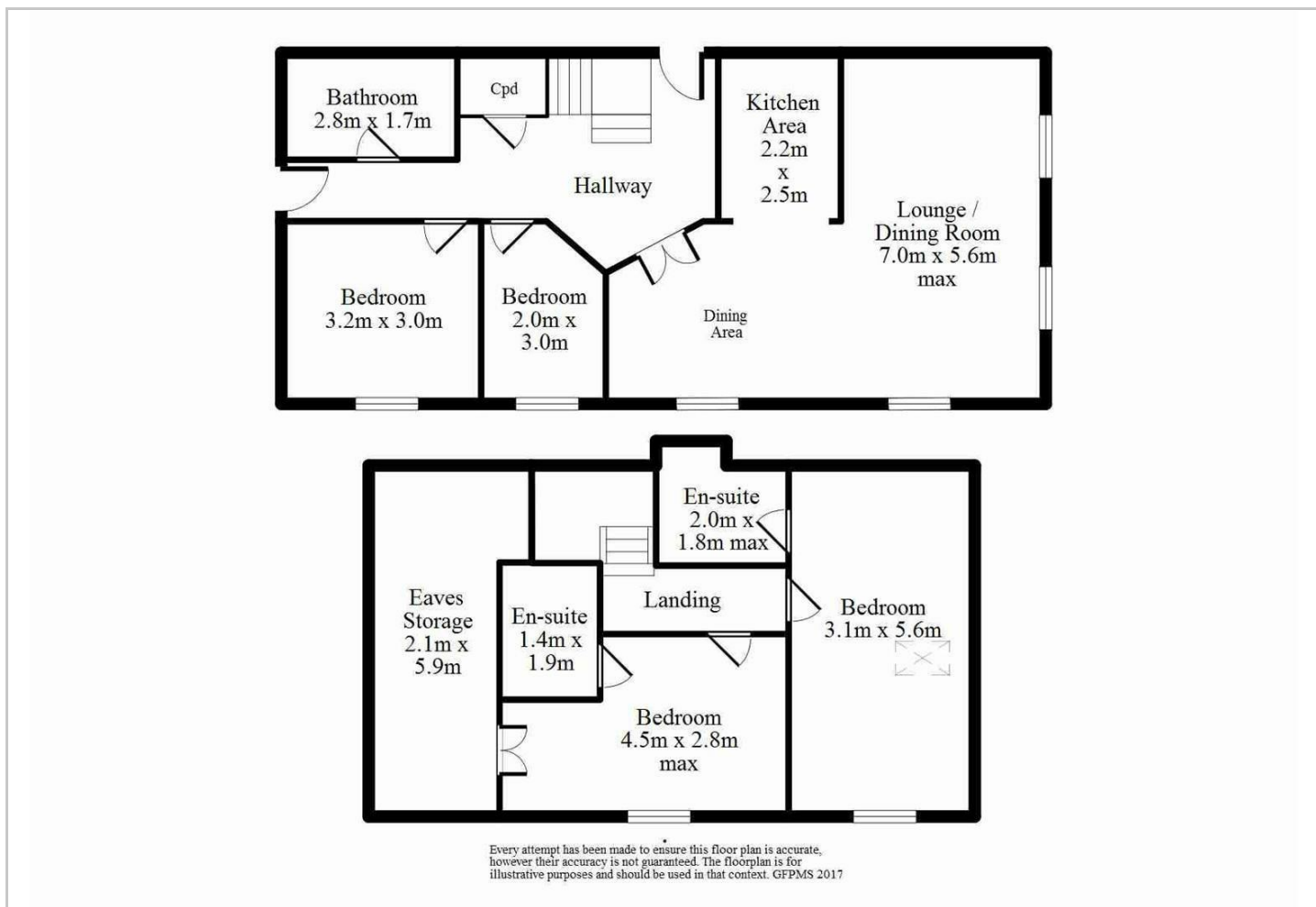
INCLUDES ELECTRIC, GAS, WATER & WIFI *DEPOSIT ALTERNATIVE AVAILABLE
 *DUPLEX APARTMENT *FULLY FURNISHED *WOODEN FLOORING *OPEN PLAN LIVING
 AREA *DINING AREA *MODERN KITCHEN *TWO/ THREE BEDROOMS *TWO EN-SUITES
 *TWO PARKING SPACES * EPC RATING C



Energy Efficiency Rating		Current	Potential
Very energy efficient - lower running costs			
(92 plus) A			
(81-91) B			
(69-80) C		73	77
(55-68) D			
(39-54) E			
(21-38) F			

Environmental Impact (CO ₂) Rating		Current	Potential
Very environmentally friendly - lower CO ₂ emissions			
(92 plus) A			
(81-91) B			
(69-80) C			
(55-68) D			
(39-54) E			
(21-38) F			

Floor Plan



Viewing

Please contact our Hunters Bingley Lettings Office on 01274 567711 if you wish to arrange a viewing appointment for this property or require further information.

These particulars are intended to give a fair and reliable description of the property but no responsibility for any inaccuracy or error can be accepted and do not constitute an offer or contract. We have not tested any services or appliances (including central heating if fitted) referred to in these particulars and the purchasers are advised to satisfy themselves as to the working order and condition. If a property is unoccupied at any time there may be reconnection charges for any switched off/disconnected or drained services or appliances - All measurements are approximate. **THINKING OF SELLING?** If you are thinking of selling your home or just curious to discover the value of your property, Hunters would be pleased to provide free, no obligation sales and marketing advice. Even if your home is outside the area covered by our local offices we can arrange a Market Appraisal through our national network of Hunters estate agents.

119 Main Street, Bingley, BD16 2HT

Tel: 01274 567711 Email: bingleylettings@hunters.com <https://www.hunters.com>