

HUNTERS[®]

HERE TO GET *you* THERE



Meadow Court

Sandy Lane, Bradford, BD15 9JZ

Asking Price £199,950



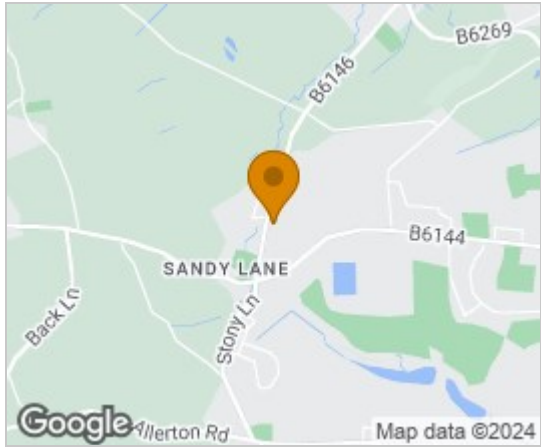
A superb two bedroom semi detached bungalow, centrally positioned in Sandy Lane village.

The well presented home comprises; entrance hall, lounge with an electric fire and access to the conservatory, a well equipped breakfast kitchen, two bedrooms with the master having fitted furniture and a house shower room. Externally are gardens to the front and rear, with low maintenance gravel and patio areas, and planted borders. There is off street parking and a single attached garage.

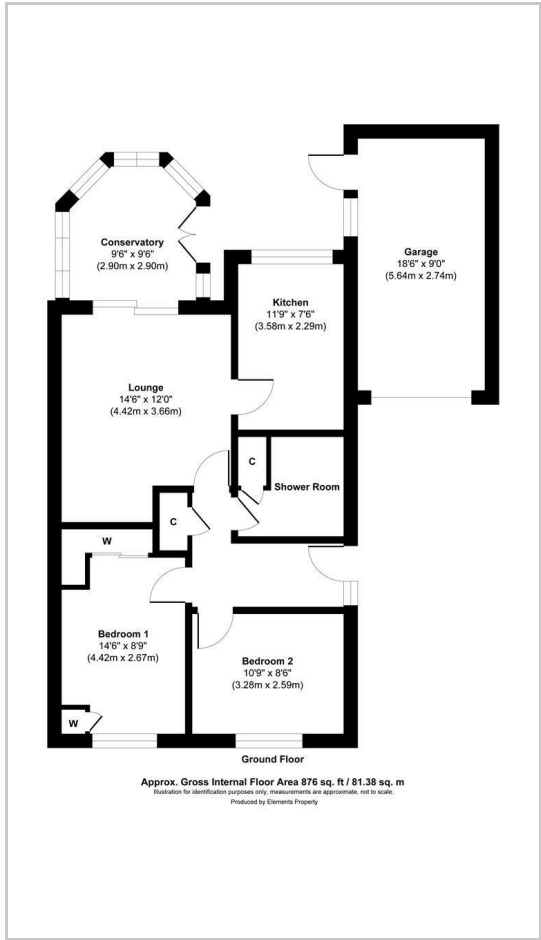
Sandy Lane is a highly sought after village and offers many village amenities, primary school, recreational facilities and excellent transport connections to other surrounding towns and villages. Bingley is approximately three miles, where there are larger shops and supermarkets and from where there is direct rail access to Leeds, Bradford and Skipton.



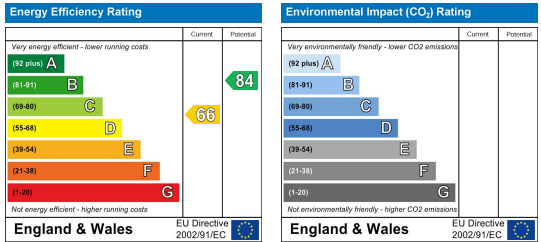
Area Map



Floor Plans



Energy Efficiency Graph



These particulars are intended to give a fair and reliable description of the property but no responsibility for any inaccuracy or error can be accepted and do not constitute an offer or contract. We have not tested any services or appliances (including central heating if fitted) referred to in these particulars and the purchasers are advised to satisfy themselves as to the working order and condition. If a property is unoccupied at any time there may be reconnection charges for any switched off/disconnected or drained services or appliances - All measurements are approximate. **THINKING OF SELLING?** If you are thinking of selling your home or just curious to discover the value of your property, Hunters would be pleased to provide free, no obligation sales and marketing advice. Even if your home is outside the area covered by our local offices we can arrange a Market Appraisal through our national network of Hunters estate agents.