

# HUNTERS<sup>®</sup>

HERE TO GET *you* THERE



## Mount View

Bingley, BD16 4PG

Asking Price £180,000

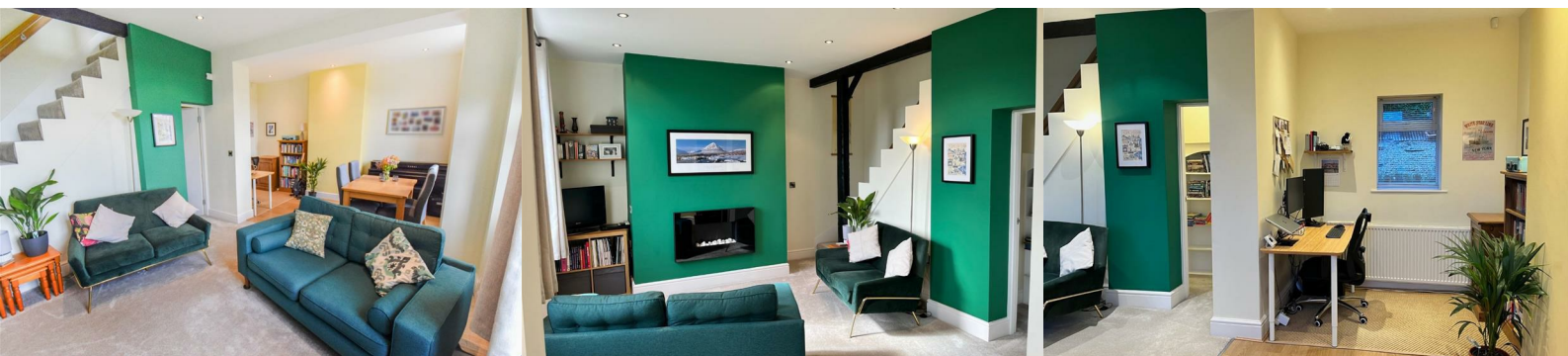


A beautifully presented and superbly maintained inner terrace home, situated on Mount View in Bingley. The well proportioned home offers accommodation over three floors and benefits from impressive views towards Bingley and beyond.

The mature home comprises, entrance into lounge, with excellent dining and study space, to the lower ground floor is a well equipped dining kitchen, utility and WC whilst to the first floor are two bedrooms with the master benefiting from discreet wardrobe and storage space, and a contemporary house bathroom with a four piece white suite.

Externally is a low maintenance garden to the front, with a patio area, and a shared pathway leading to the other homes on Mount View.

Bingley town centre is approximately 1 mile away and offers a broad range of everyday amenities, large chain supermarkets, and bespoke retailers and eateries. Bingley station offers direct rail access to Leeds, Bradford and Skipton.



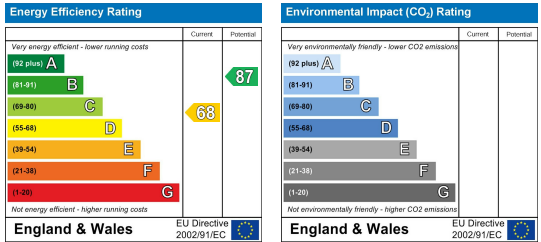
# Area Map



# Floor Plans



# Energy Efficiency Graph



These particulars are intended to give a fair and reliable description of the property but no responsibility for any inaccuracy or error can be accepted and do not constitute an offer or contract. We have not tested any services or appliances (including central heating if fitted) referred to in these particulars and the purchasers are advised to satisfy themselves as to the working order and condition. If a property is unoccupied at any time there may be reconnection charges for any switched off/disconnected or drained services or appliances - All measurements are approximate. **THINKING OF SELLING?** If you are thinking of selling your home or just curious to discover the value of your property, Hunters would be pleased to provide free, no obligation sales and marketing advice. Even if your home is outside the area covered by our local offices we can arrange a Market Appraisal through our national network of Hunters estate agents.