

HUNTERS[®]

HERE TO GET *you* THERE



Otley Road

Bingley, BD16 3EQ

Guide Price £375,000



A much enhanced, extended and very well presented three bedroom three bathroom semi detached home with gardens and parking in a most sought after residential village.

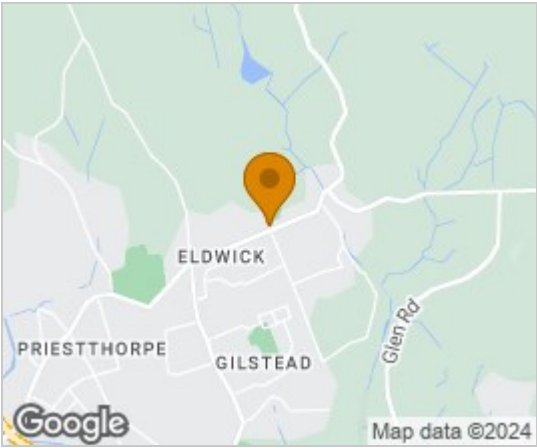
Having well laid out accommodation over three floors with the addition of a useful storage cellar a viewing to a most impressive and spacious family home does come highly recommended.

Finished to a high standard and offered with no onward chain, the home comprises; entry into lounge, contemporary well equipped kitchen extension dining space with WC off, two first floor bedrooms with ensuite bathrooms, and over all further attic master suite with en suite shower facilities. Externally is ample off street parking and further gardens.

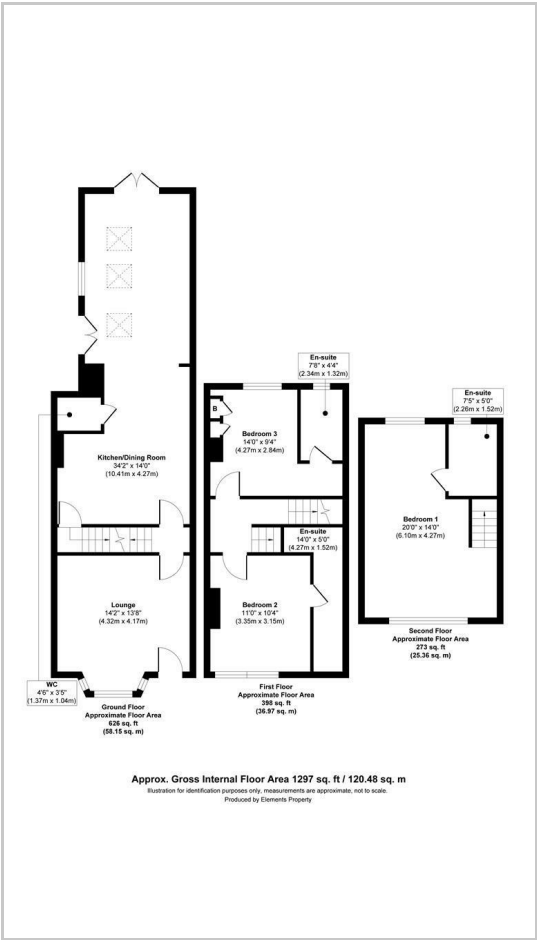
Eldwick is a highly sought after and well regarded location, it offers many village amenities, and convenient access to Bingley from where there is a direct rail link to Leeds, Bradford and Skipton. It is considered to be within daily commutable distance of many West Yorkshire business centres.



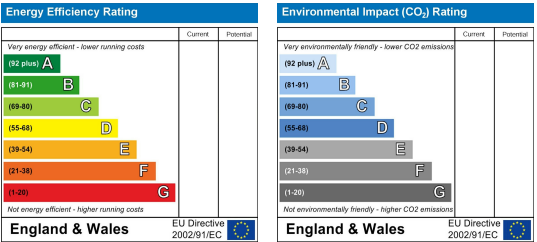
Area Map



Floor Plans



Energy Efficiency Graph



These particulars are intended to give a fair and reliable description of the property but no responsibility for any inaccuracy or error can be accepted and do not constitute an offer or contract. We have not tested any services or appliances (including central heating if fitted) referred to in these particulars and the purchasers are advised to satisfy themselves as to the working order and condition. If a property is unoccupied at any time there may be reconnection charges for any switched off/disconnected or drained services or appliances - All measurements are approximate. **THINKING OF SELLING?** If you are thinking of selling your home or just curious to discover the value of your property, Hunters would be pleased to provide free, no obligation sales and marketing advice. Even if your home is outside the area covered by our local offices we can arrange a Market Appraisal through our national network of Hunters estate agents.