

George Adams

ESTATE AGENTS



35 Bishops Corner, Hulme, M15 4UW

£1,300 PCM



Available 15th July 2025

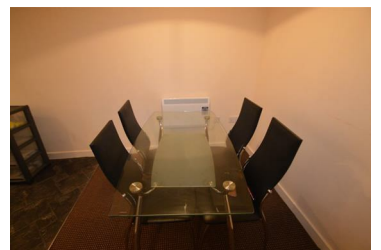
Second floor, two double bedroom apartment located in the heart of Hulme close to Hulme Park.

The property consists of two double bedrooms, open plan lounge & dining area, fully fitted kitchen, and large bathroom with shower over bath.

The property also benefits from lift access, a balcony off the lounge, secure gated parking, and an onsite caretaker.

A great location only twenty minutes walk from Manchester City Centre and The Universities and a ten minute walk to ASDA Hulme.

Perfect for both students and professionals.



Unit 1 Bishops Corner, 321 Stretford Road, Hulme, Manchester, M15 4UW
Tel: 01612262288 Email: enquiries@georgeadamsestateagents.co.uk www.altosoftware.co.uk