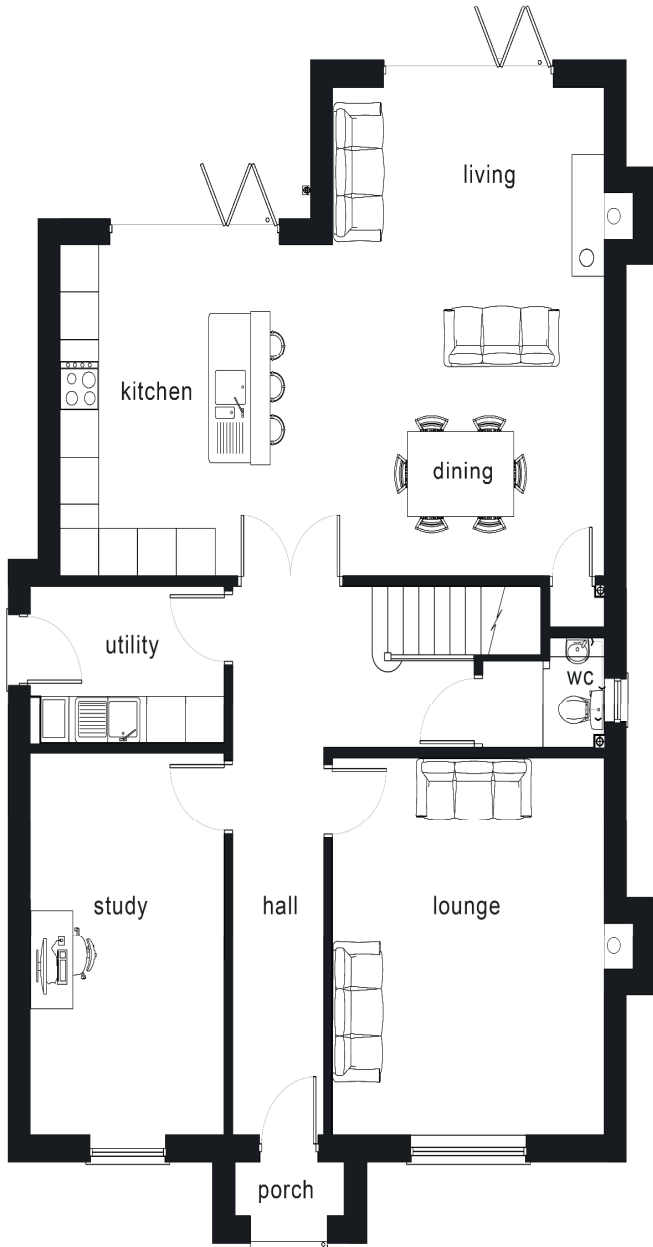




Wingletye Lane, Borders of Emerson Park P.O.A.

Be in for Christmas, with completion due early December 2017 is this attractive detached family home under construction by renowned local builders Flower Mills Homes Limited. In brief the luxuriously appointed accommodation will incorporate four double bedrooms and two bathrooms. To the ground floor, there will be two separate reception rooms to the front of the property and a fabulous open plan kitchen/dining and family room to the rear. In addition there will be a separate utility room and ground floor cloakroom. The property will incorporate double glazed windows with bi-fold doors to the rear garden. There will be gas fired heating to the ground and first floor. The flooring will be either carpeted or with Porcelainosa tiles. The luxuriously appointed fitted kitchen will incorporate Miele oven and hob and a Bosch integrated fridge freezer. The property will have an alarm system and be wired for CCTV. Externally, the gardens to the front and rear will be landscaped incorporating a stone driveway. The rear garden itself will measure 76' in depth. Please contact Davis Estates for further details or to register your interest. Ref No.4795-17



FIRST FLOOR

GROUND FLOOR

