



Margaret Cottage Pean Hill, Whitstable, Kent
£875,000





IMPORTANT NOTE TO PURCHASERS: We endeavour to make our sales particulars accurate and reliable, however, they do not constitute or form part of an offer or any contract and none is to be relied upon as statements of representation or fact. The services, systems and appliances listed in this specification have not been tested by us and no guarantee as to their operating ability or efficiency is given. All measurements have been taken as guide to prospective buyers only, and are not precise. Floor plans where included are not to scale and accuracy is not guaranteed. If you require clarification or further information on any points, please contact us, especially if you are travelling some distance to view. Fixtures and fittings other than those mentioned are to be agreed with the seller.



Description

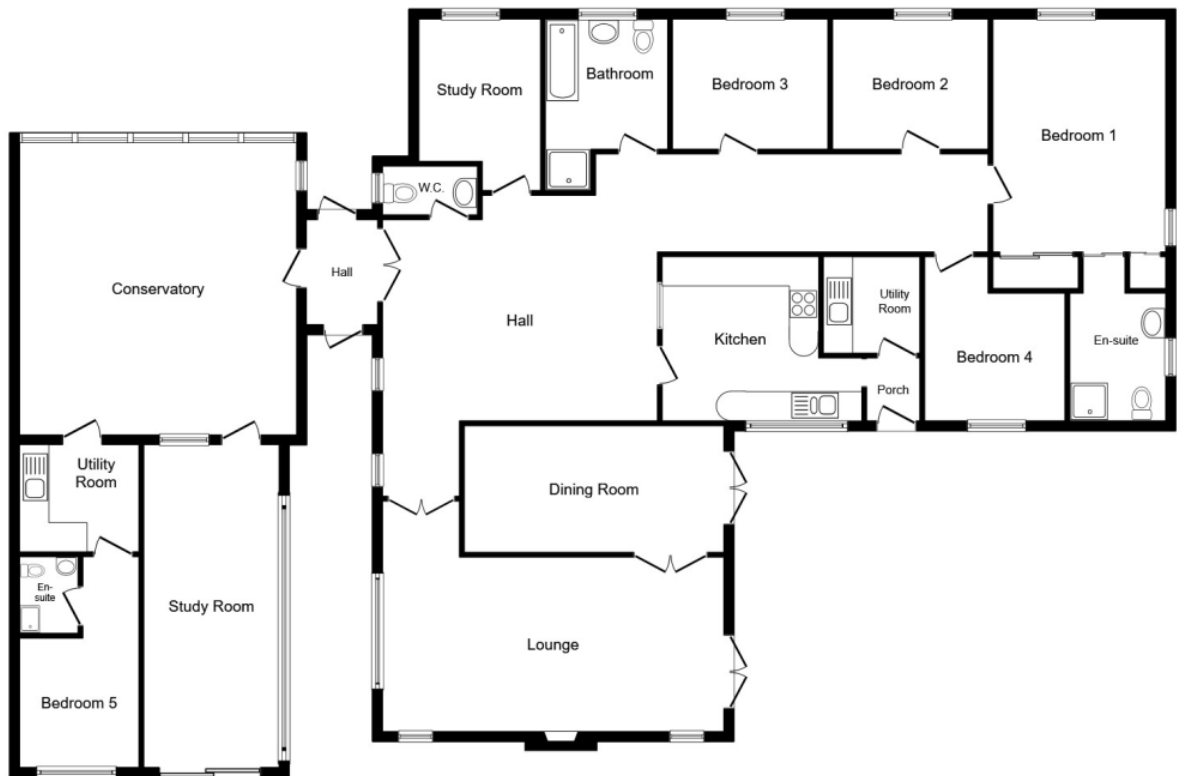
LOCATION LOCATION LOCATION CALL TO VIEW - DON'T MISS OUT !! This modern stunning impressive home is neatly tucked away at the end of a long, sweeping carriage driveway and is completely hidden from the road. It is set in the most idyllic of locations. Upon our first visit to the property, we were immediately in awe of the sheer size of grounds the home sits in. Measuring in at an unrivaled 1.97 acres, this is not your every day property and the possibilities are endless with how you could utilise everything on offer. The bungalow itself is immaculately presented, with each room well proportioned and offering excellent space. Notable features include: en-suite shower room/wc to master bedroom, and 12' summer house in rear garden. If you require an ANNEX or additional space there there is a stunning reception room with separate kitchen and bedroom /bathroom.... There is NO ONWARD CHAIN. EPC Grade D.

Council Tax

EPC

EPC Rating D

For full EPC please contact the branch.



Floor Plan

Total floor area 250.0 sq. m. (2,691 sq. ft.) approx

This plan is for illustration purposes only and may not be representative of the property. Plan not to scale.

Powered by audioagent.com

118 High Street, Herne Bay, Kent, CT6 5JY
01227 367161 * hernebay@your-move.co.uk



your-move.co.uk