



Driftwood Marine Drive, Broadstairs, Kent **Guide £900,000**







Driftwood Marine Drive, Broadstairs, Kent

Guide £900,000



EPC Grade C
For full EPC please contact the branch

Property Description

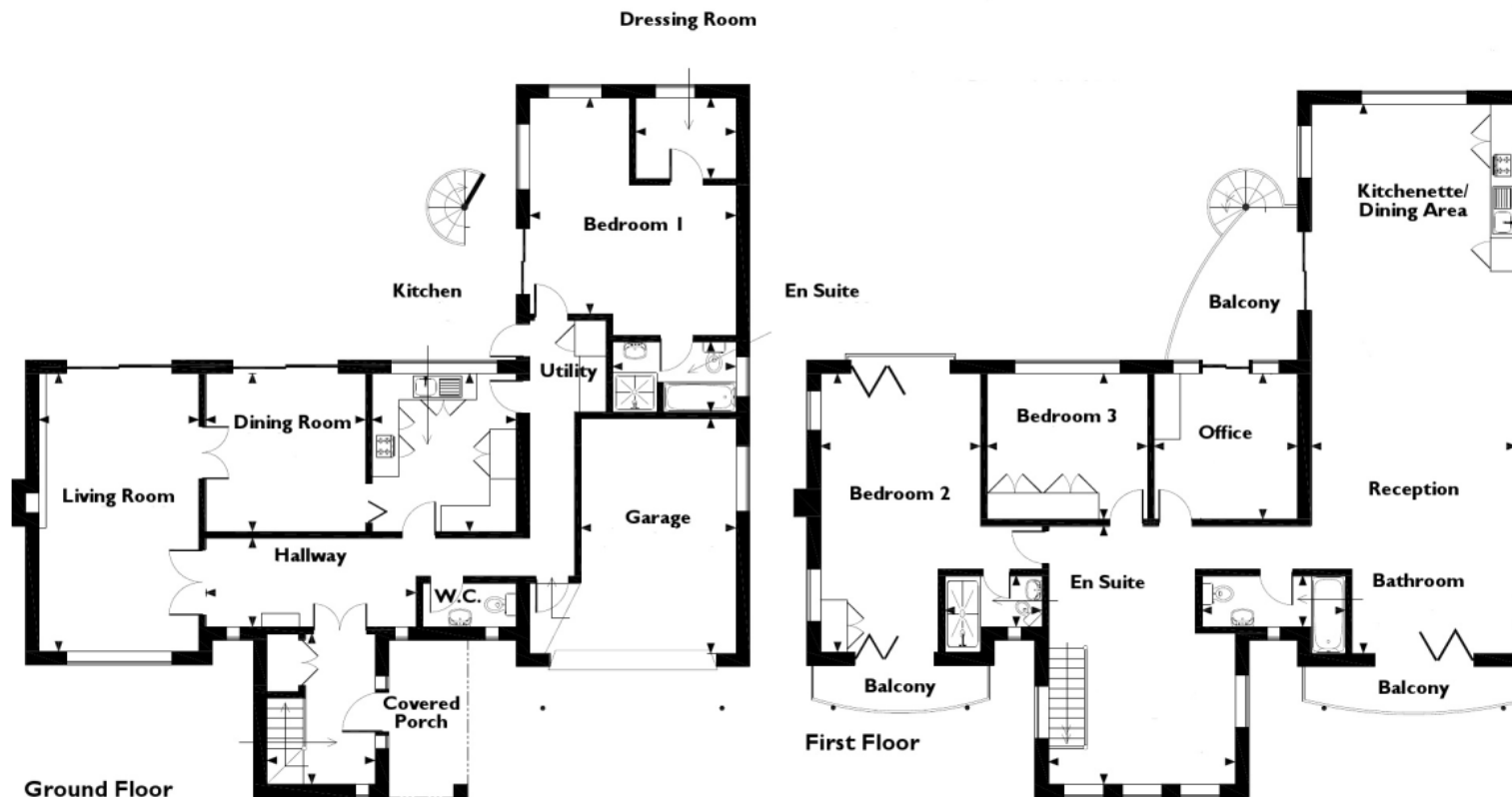
ENVIABLE CLIFF TOP LOCATION WITH SEA VIEWS - Driftwood is a large modern family home with a wealth of versatile accommodation, sunny landscaped gardens with swimming pool, front and rear balconies and a stunning sea view. The ground floor has three reception room a modern fitted kitchen and family bathroom. The upper floor has four bedroom areas with en-suite facilities and a further family bathroom. Both master suites have balconies with sea views and there is an additional sitting room on this floor offering another great view in a light and airy space. This family home has an internal staircase to the front and an outdoor staircase to the rear offering access to the pool area and the landscaped rear gardens. An exceptional family home in a sought after location. Call today to arrange your viewing. A copy of the EPC will be available on request. EPC Grade C.

Our View

This modern home has much to offer, ideally suited to a growing family or someone looking to accommodate a relative on the ground floor. Substantial living accommodation downstairs and flexible bedroom areas upstairs lend themselves well to suit any needs. The large sunny rear gardens are landscaped with a heated swimming pool, patio area and lawns. Call today for more information.

Location

Marine Drive is situated perfectly between the North Foreland Golf Course and the Botany Bay Hotel on the clifftops at Kingsgate. The picturesque Botany bay a short stroll from here and the popular tourist beach at Joss bay close by. A seafront home that must be seen to be believed.



IMPORTANT NOTE TO PURCHASERS: We endeavour to make our sales particulars accurate and reliable, however, they do not constitute or form part of an offer or any contract and none is to be relied upon as statements of representation or fact. The services, systems and appliances listed in this specification have not been tested by us and no guarantee as to their operating ability or efficiency is given. All measurements have been taken as guide to prospective buyers only, and are not precise. Floor plans where included are not to scale and accuracy is not guaranteed. If you require clarification or further information on any points, please contact us, especially if you are travelling some distance to view. Fixtures and fittings other than those mentioned are to be agreed with the seller.

Your Move is a trading name of your-move.co.uk, registered in England at Newcastle House, Albany Court, Newcastle Business Park, Newcastle upon Tyne NE4 7YB (number 01864469).

*Calls may be recorded and/or monitored for training and/or security purposes.

134 High Street, Broadstairs, Kent, CT10 1JB
01843 863030 * Broadstairs@Your-Move.co.uk

