



Abbots Road, Abbots Langley, Hertfordshire **Price on Application**







Abbots Road, Abbots Langley, Hertfordshire

Price on Application

Property Description

SIMPLY BREATHTAKING! This absolutely stunning 5 BEDROOM DETACHED HOME is set on the prime road of the village, an easy walk from local amenities, Kings Langley train station and public parkland. Words cannot do justice to the sheer quality and size on offer, with just some of the many features being; underfloor heating in select areas of the home, a 2 man Jacuzzi, SONOS integrated audio system on every floor and the house and garden was extensively remodeled to an exceptional standard in 2015. There is also a detached home office/gym with internet etc., 3 En-suite bathrooms and more. Most impressive is the limestone spiral staircase with hydraulic glass door to wine cellar which will be the envy of your friends. With extensive driveway and over 2200 sq foot of living space on offer this home really does have it all. Awaiting EPC.

Our View

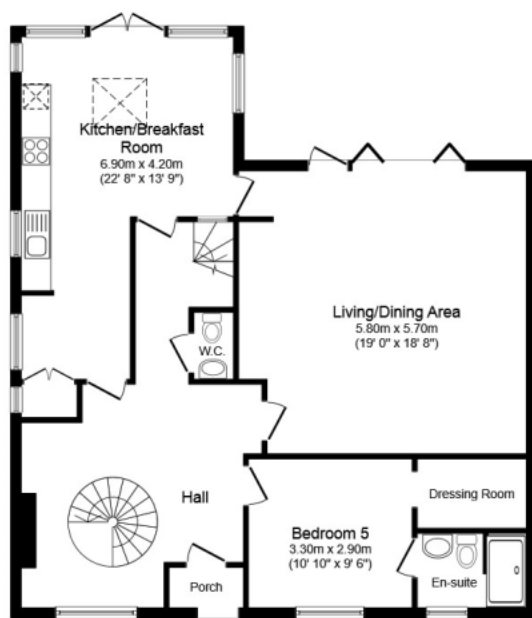
A truly special home, this is what the term wow factor was coined for! Unique opportunity to own an immaculately presented detached home of over 2200 sq foot superbly located in the heart of the village, caringly renovated by the current owners to an exacting standard which really impresses. A viewing is essential to appreciate just quite how special this house is.

Location

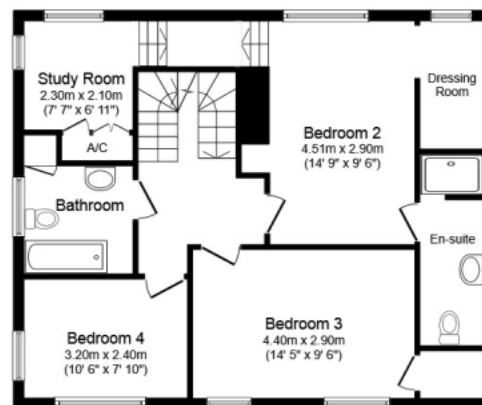
Abbots Langley is a delightful family village with local businesses and a strong sense of community. Nestled minutes from where M1 meets the M25, the village boasts excellent schools and a mainline station into Euston. The famous Leavesden Studios are also nearby.



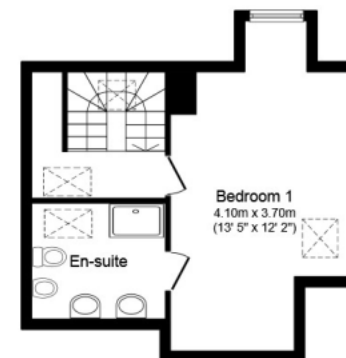
Five Bedroom Family Home
For full EPC please contact the branch



Ground Floor



First Floor



Second Floor

Total floor area 206.0 sq. m. (2,217 sq. ft.) approx

This plan is for illustration purposes only and may not be representative of the property. Plan not to scale.

Powered by audioagent.com

IMPORTANT NOTE TO PURCHASERS: We endeavour to make our sales particulars accurate and reliable, however, they do not constitute or form part of an offer or any contract and none is to be relied upon as statements of representation or fact. The services, systems and appliances listed in this specification have not been tested by us and no guarantee as to their operating ability or efficiency is given. All measurements have been taken as guide to prospective buyers only, and are not precise. Floor plans where included are not to scale and accuracy is not guaranteed. If you require clarification or further information on any points, please contact us, especially if you are travelling some distance to view. Fixtures and fittings other than those mentioned are to be agreed with the seller.

Your Move is a trading name of your-move.co.uk, registered in England at Newcastle House, Albany Court, Newcastle Business Park, Newcastle upon Tyne NE4 7YB (number 01864469).

*Calls may be recorded and/or monitored for training and/or security purposes.

High Street, Abbots Langley, Hertfordshire, WD5
0AR

01923 266701 * Abbotslangley@your-move.co.uk

