



Calderwood, Gravesend, Kent **Offers in the region of £585,000**





YOUR MOVE





Calderwood, Gravesend,  
Kent

**Offers in the region of  
£585,000**



**EPC Grade C**  
**For full EPC please contact the branch**

### Property Description

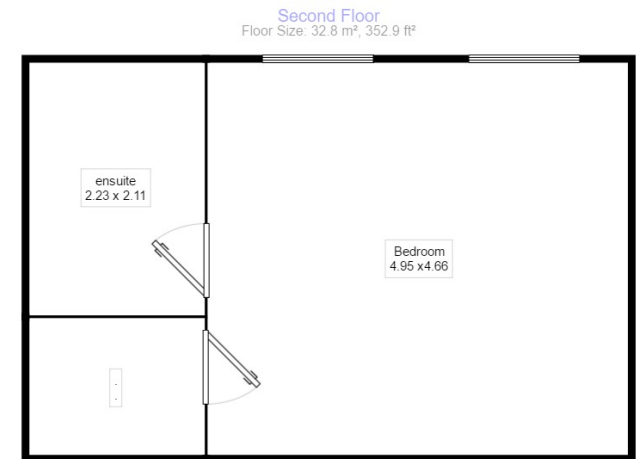
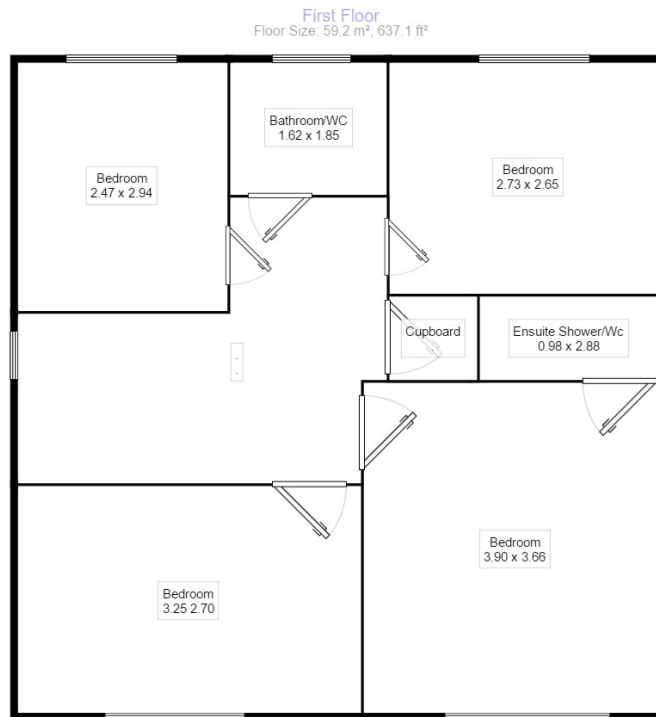
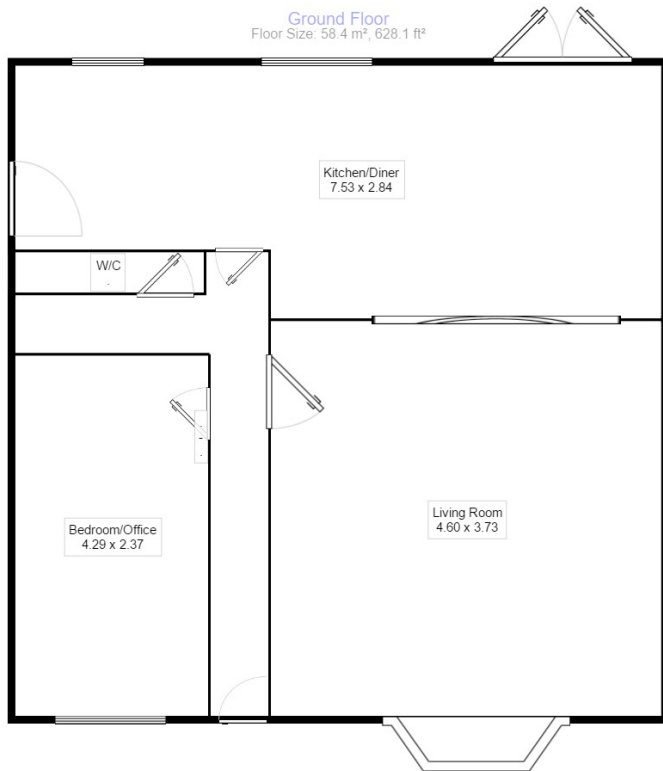
Your Move are excited to offer this beautiful 6 bedroom detached house to the market. The property comprises of a lounge, kitchen/diner, bedroom/office and w/c to the ground floor. To the second floor you will find four bedrooms one of which has an en-suite and a family bathroom. To the top floor is a large double bedroom with shower/wc and lots of storage in the eaves. To the front of the property is a large drive that offers off street parking for 3/4 cars. At rear of the property there is a two tier garden. EPC grade C

### Our View

With large rooms and plenty of space this property is sure to be popular. It's ideal for a family looking for their forever home. Book early to avoid disappointment.

### Location

This large property is located on the popular Riverview Park area offering great access to the A2/M25 and Bluewater shopping center. The property is just 3 miles away from Gravesend train station and 5.4 miles away from Ebbsfleet International offering fast and frequent links to London. This property is ideally located for families being less than half a mile away from Singlewell primary school and Thames View secondary school. Just a few roads away you will find local shops within walking distance.



Measurements are approximate. Not to scale. For illustrative purposes only.

**IMPORTANT NOTE TO PURCHASERS:** We endeavour to make our sales particulars accurate and reliable, however, they do not constitute or form part of an offer or any contract and none is to be relied upon as statements of representation or fact. The services, systems and appliances listed in this specification have not been tested by us and no guarantee as to their operating ability or efficiency is given. All measurements have been taken as guide to prospective buyers only, and are not precise. Floor plans where included are not to scale and accuracy is not guaranteed. If you require clarification or further information on any points, please contact us, especially if you are travelling some distance to view. Fixtures and fittings other than those mentioned are to be agreed with the seller.

Your Move is a trading name of your-move.co.uk, registered in England at Newcastle House, Albany Court, Newcastle Business Park, Newcastle upon Tyne NE4 7YB (number 01864469).

\*Calls may be recorded and/or monitored for training and/or security purposes.

0 Windmill Street, Gravesend, Kent, DA12 1AD

01474 533455 \* Gravesend@your-move.co.uk

