



Tudor Court, Tudor Road, Kingston Upon Thames, Surrey **Price on Application**





YOUR MOVE





Tudor Court, Tudor Road, Kingston Upon Thames, Surrey

Price on Application

Property Description

Your Move are pleased to bring to market this exceptional two bedroom ground floor apartment with direct access onto attractive communal gardens. Comprising of 2 double bedrooms with some fitted storage, a large reception with bay window offering pleasant views over the communal gardens, a recently fitted modern kitchen and family bathroom with bath. This property has benefited from a recent refurbishment and is offered for sale in a ready to move into condition. Epc Grade D.

Our View

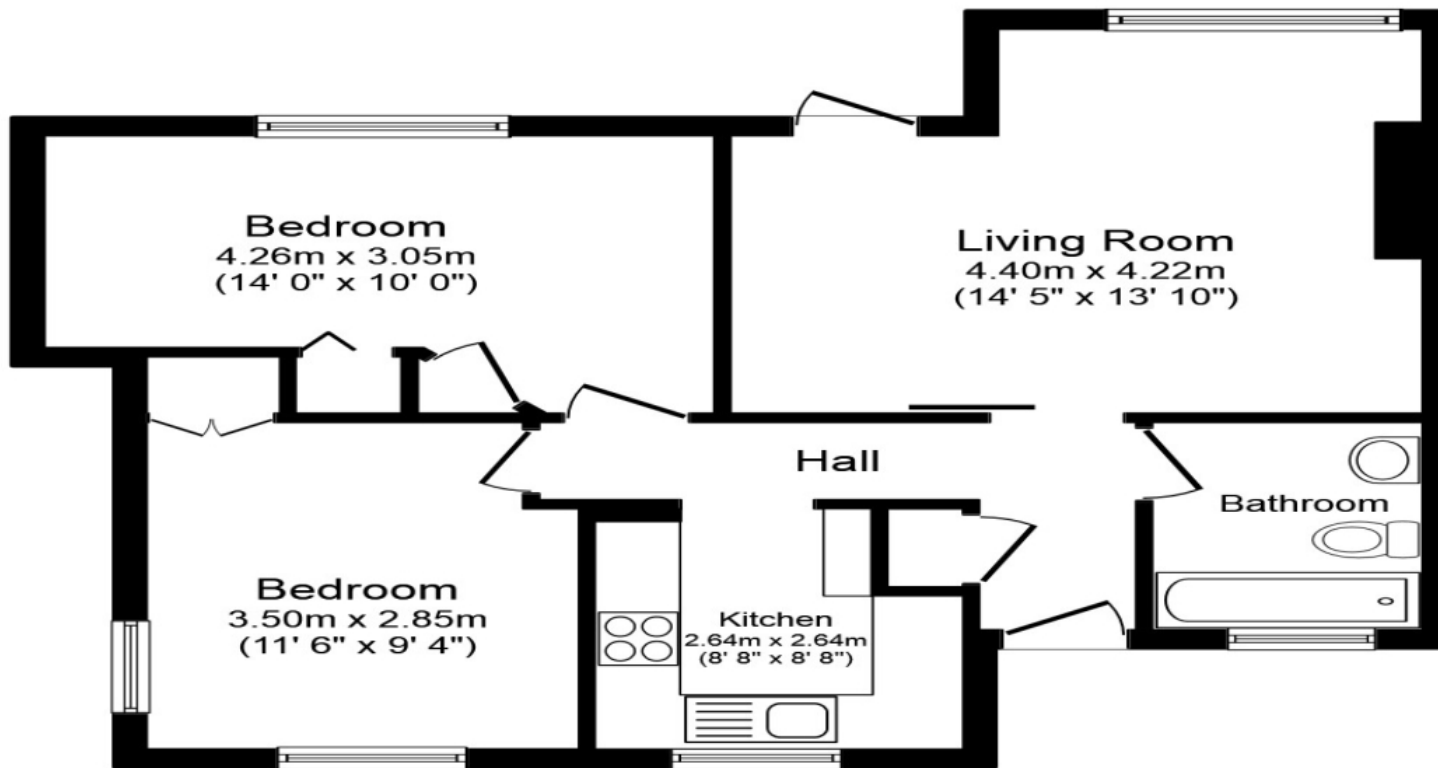
Your Move are pleased to bring to market this exceptional two bedroom ground floor apartment with direct access onto attractive communal gardens. Comprising of 2 double bedrooms with some fitted storage, a large reception with bay window offering pleasant views over the communal gardens, a recently fitted modern kitchen and family bathroom with bath. This property has benefited from a recent refurbishment and is offered for sale in a ready to move into condition. Epc Grade D.

Location

Found in a desirable residential street in Kingston-Upon-Thames within 0.6 miles of Norbiton Station and 0.3 miles of Kingston Hospital making an ideal buy to let for those looking to rent to hospital workers. In addition



Ground Floor Flat
For full EPC please contact the branch



Ground Floor Plan

Total floor area 55.0 sq. m. (592 sq. ft.) approx

This plan is for illustration purposes only and may not be representative of the property.
Plan not to scale.

Powered by audioagent.com

IMPORTANT NOTE TO PURCHASERS: We endeavour to make our sales particulars accurate and reliable, however, they do not constitute or form part of an offer or any contract and none is to be relied upon as statements of representation or fact. The services, systems and appliances listed in this specification have not been tested by us and no guarantee as to their operating ability or efficiency is given. All measurements have been taken as guide to prospective buyers only, and are not precise. Floor plans where included are not to scale and accuracy is not guaranteed. If you require clarification or further information on any points, please contact us, especially if you are travelling some distance to view. Fixtures and fittings other than those mentioned are to be agreed with the seller.

Your Move is a trading name of your-move.co.uk, registered in England at Newcastle House, Albany Court, Newcastle Business Park, Newcastle upon Tyne NE4 7YB (number 01864469).

*Calls may be recorded and/or monitored for training and/or security purposes.

63-65 Fife Road, Kingston Upon Thames, Surrey,
KT1 1SF

020 8549 9033 * Kingston@your-move.co.uk

