



Sharon Gardens, London E9

**Guide Price
£1,250,000-
£1,350,000**



- **Attractive 4 bedroom 1930's Semi**
- **2 Reception Rooms**
- **Several Rail Links under 3/4 mile away**
- **Side Access**
- **Chain Free**





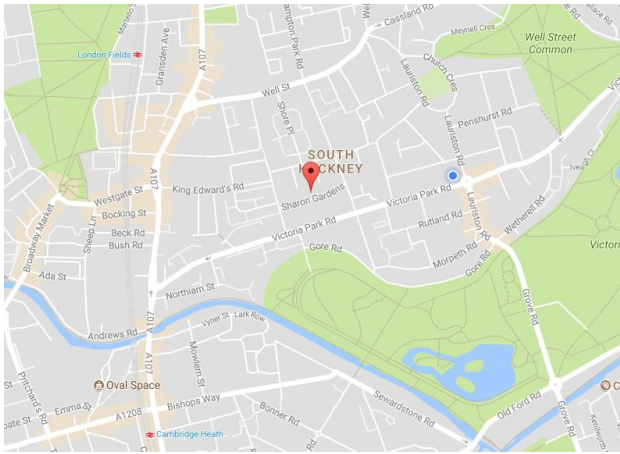
Sharon Gardens is a quiet one way street conveniently located between popular areas of Victoria Park & London Fields

This attractive 1930's house benefits from two reception rooms, kitchen diner, wc & porch area and the upper level enjoys 4 bedrooms, family bathroom & separate shower room.

There is an attractive low maintenance frontage with side access leading to the rear garden.

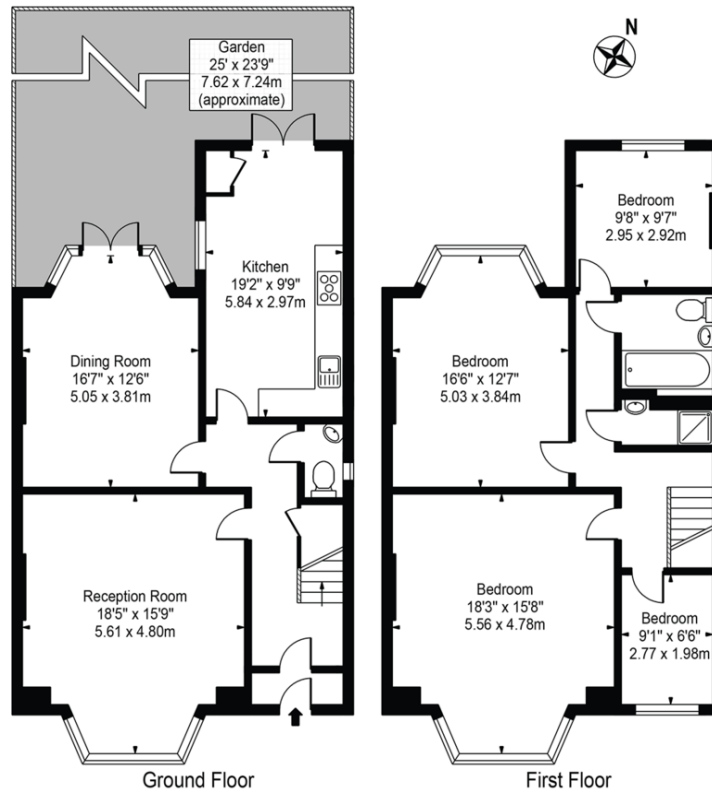
For commuters you will find London Fields lies just 0.3 miles away and Hackney central railway and Bethnal green underground are under 3/4 mile.





Sharon Gardens

Approx. Gross Internal Area 1620 Sq Ft - 150.50 Sq M



For Illustration Purposes Only - Not To Scale

This floor plan should be used as a general outline for guidance only and does not constitute in whole or in part an offer or contract. Any intending purchaser or lessee should satisfy themselves by inspection, searches, enquiries and full survey as to the correctness of each statement. Any areas, measurements or distances quoted are approximate and should not be used to value a property or be the basis of any sale or let.

To follow

Council Tax Band
F

Please contact our office at

213 Victoria Park Road
London,
E9 7HD

020 8985 5800

sovereign-house.com
vicparksales@sovereign-house.com



DAYS A WEEK



FREE VALUATIONS



FLOOR PLANS



FULL COLOUR PHOTOGRAPHY



SMS TEXT ALERTS



MORTGAGE ADVICE



COLOUR MAPS

Victoria Park Sales
213 Victoria Park Road
London E9 7HD
Tel: 020 8985 5800



@sovereignhouse



www.facebook.com/sovereignhousehackney

Clayhall/Redbridge Sales
176 Longwood Gardens,
Essex IG5 0EW
Tel: 020 8220 1500

