

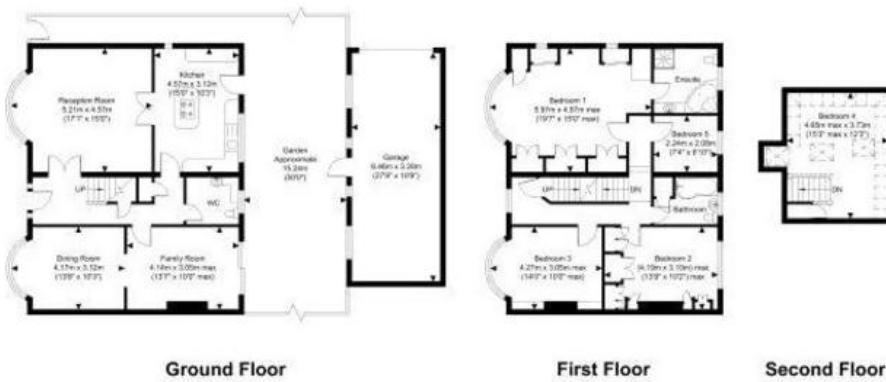
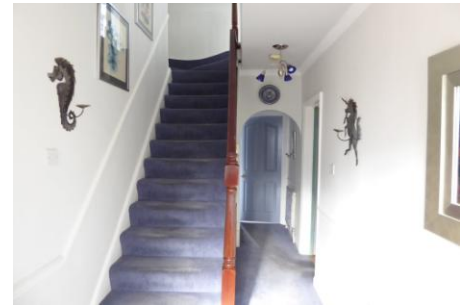


Denham Crescent, Mitcham Cricket Green, CR4

Asking Price Of
£675,000

Property Features

A substantial, double fronted family home boasting five bedrooms. The property is well presented throughout and is arranged over 2096 Sq ft and comprises of three receptions, 14'11 x 11'02 kitchen/ breakfast room, downstairs cloakroom and two bathrooms (one of which is an en-suite). Further benefits include double glazing, gas central heating, landscaped rear garden and a double garage! There is also NO onward chain. Denham Crescent is well located in the highly desirable Mitcham Park and is within minutes of Mitcham Cricket Green, excellent schools and great transportation links (the tram and Mitcham Junction train station). Please call T2M to arrange a viewing- you will not be disappointed...)



Energy Efficiency Rating			Environmental Impact Rating (CO ₂)		
Current	Potential	Score	Current	Potential	Score
A	B	71	66	66	66

Agents Note: Whilst every care has been taken to prepare these sales particulars, they are for guidance purposes only. All measurements are approximate and for general guidance purposes only and whilst every care has been taken to ensure their accuracy, they should not be relied upon and potential buyers are advised to recheck the measurements

- Substantial family home arranged over 2096 Sq ft
- Five spacious bedrooms
- Three reception rooms
- Double fronted
- 14'11 X 11'02 Kitchen/ breakfast room
- Downstairs cloakroom along with two bathrooms
- NO onward chain

Tooting Office
Tooting
London

Mon-Fri: 8:30am - 7pm
Sat: 9am - 5pm

www.time2move.com
admin@time2move.com
0208 640 0146

