

BRAND NEW OFF PLAN UNIT

45TH FLOOR PENTHOUSE

TWO DOUBLE BEDROOMS

TWO BATHROOMS

TREE TERRACES

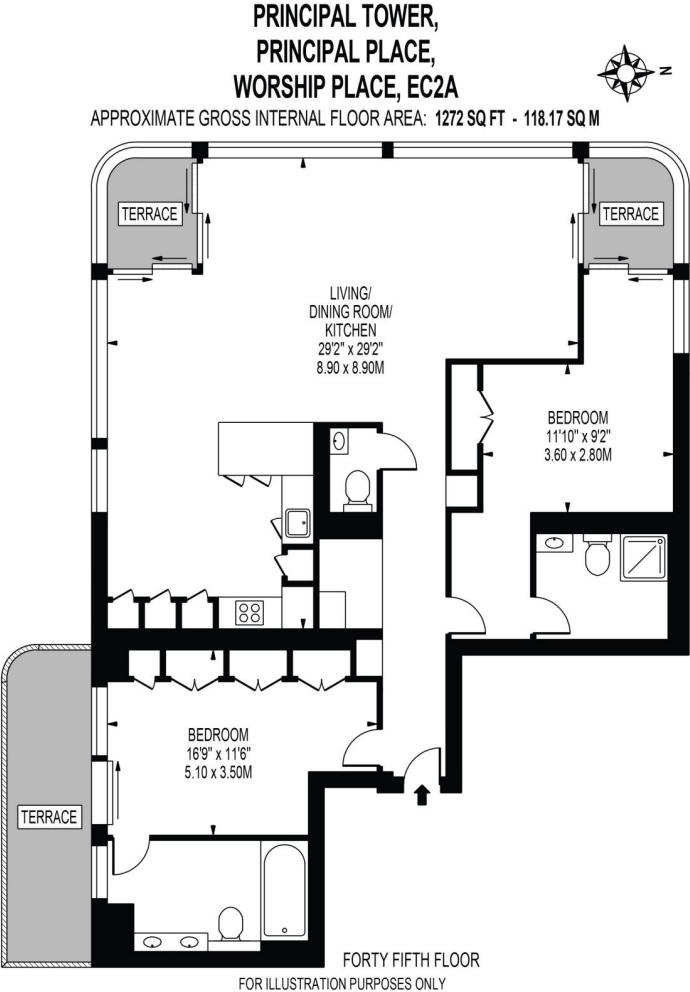
A penthouse that is destined to exceed expectations in both style and design. The property is a part of the Principle Tower development which has been designed by award winning architects Foster + Partners, and is sure to become one of the capital's great landmarks in the future. The development is surrounded by a wealth of transport links including Liverpool Street Underground station.

£2,864,000 (Leasehold)



PRINCIPAL TOWER, WORSHIP PLACE, LONDON EC2A

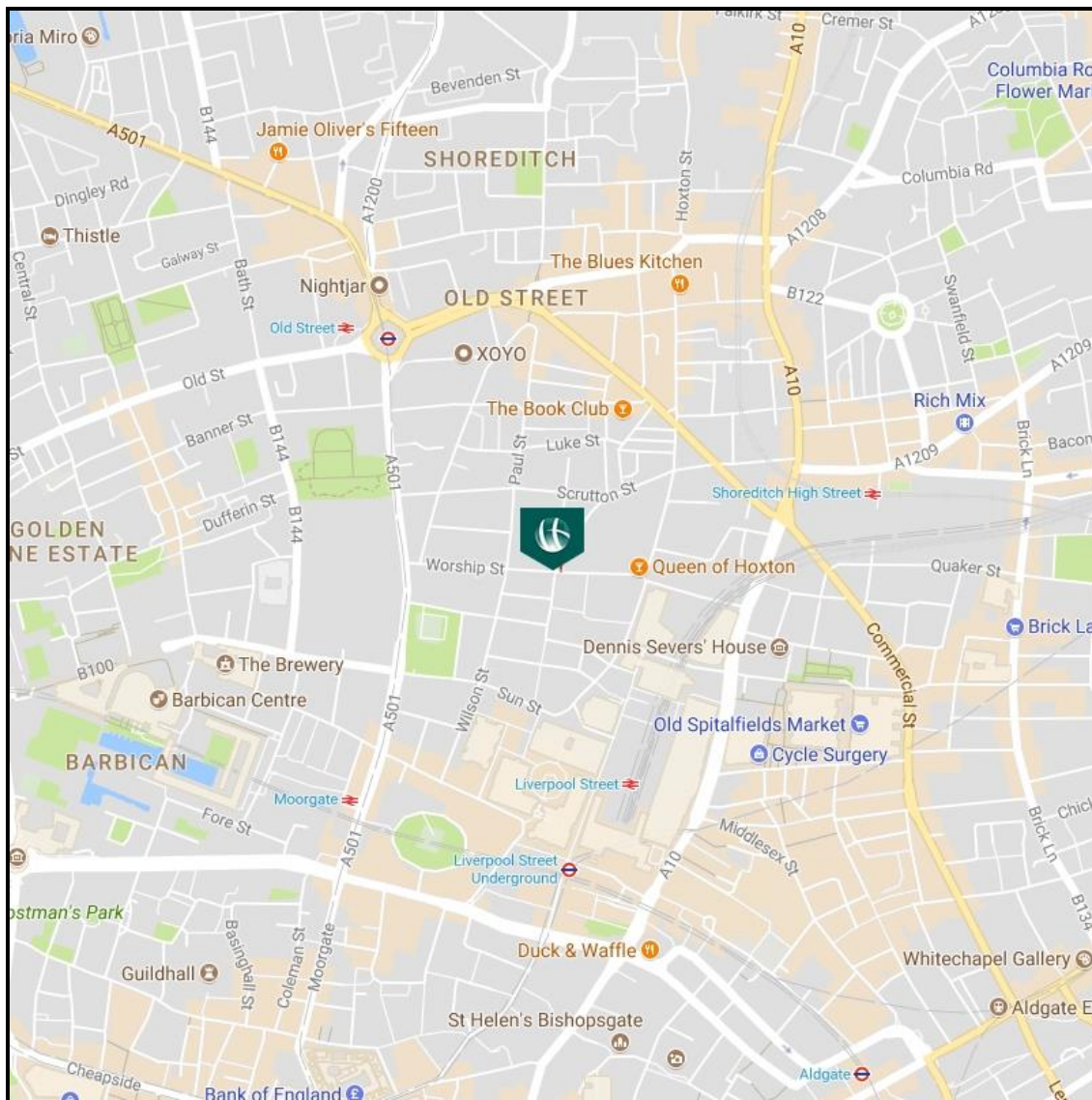
£2,864,000 (Leasehold)



THIS FLOOR PLAN SHOULD BE USED AS A GENERAL OUTLINE FOR GUIDANCE ONLY AND DOES NOT CONSTITUTE IN WHOLE OR IN PART AN OFFER OR CONTRACT. ANY INTENDING PURCHASER OR LESSEE SHOULD SATISFY THEMSELVES BY INSPECTION, SEARCHES, ENQUIRIES AND FULL SURVEY AS TO THE CORRECTNESS OF EACH STATEMENT. ANY AREAS, MEASUREMENTS OR DISTANCES QUOTED ARE APPROXIMATE AND SHOULD NOT BE USED TO VALUE A PROPERTY OR BE THE BASIS OF ANY SALE OR LET.

PRINCIPAL TOWER, WORSHIP PLACE, LONDON EC2A

£2,864,000 (Leasehold)



View Property

Contact Information:

City Office

122 Whitechapel High Street, London, E1 7PT

Tel: +44 (0)20 7247 3888

Email: city@chaseevans.co.uk