

OFF-PLAN DEVELOPMENT

TWO BEDROOMS

TWO BATHROOMS

1338 SQ. FT.

8TH FLOOR

Chase Evans is delighted to offer this magnificent, river facing 'off plan' two bedroom, two bathroom apartment situated within this luxury development in Tower Hill. The property is situated on the 8th floor of the Landmark Place development and boasts around 1338 sq. ft. of living space and a private balcony. The development is located a short distance away from Tower Hill Underground station.

£2,480,000 (Leasehold)

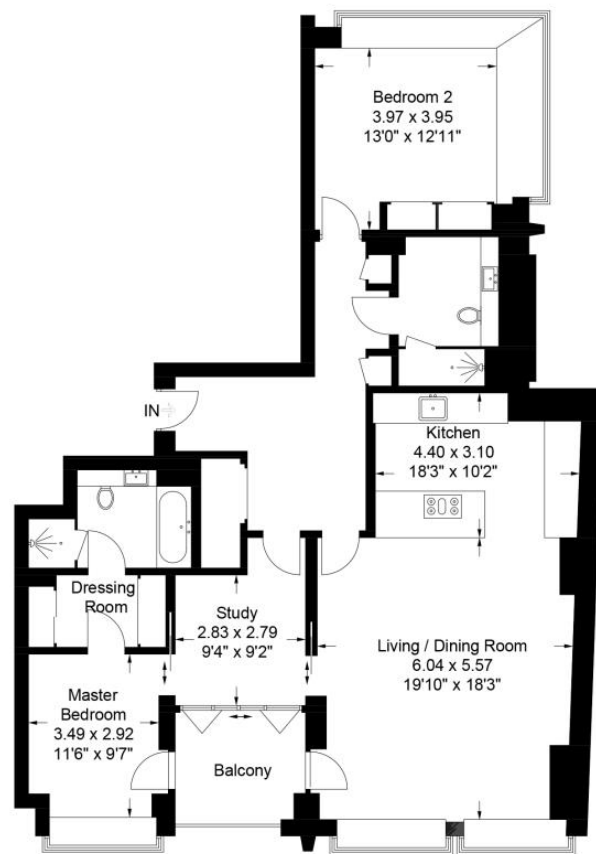


LANDMARK PLACE, TOWER HILL, LONDON EC3R

£2,480,000 (Leasehold)

Landmark Place, Tower Hill, EC3R

Approximate Gross Internal Area = 124 sq m / 1338 sq ft



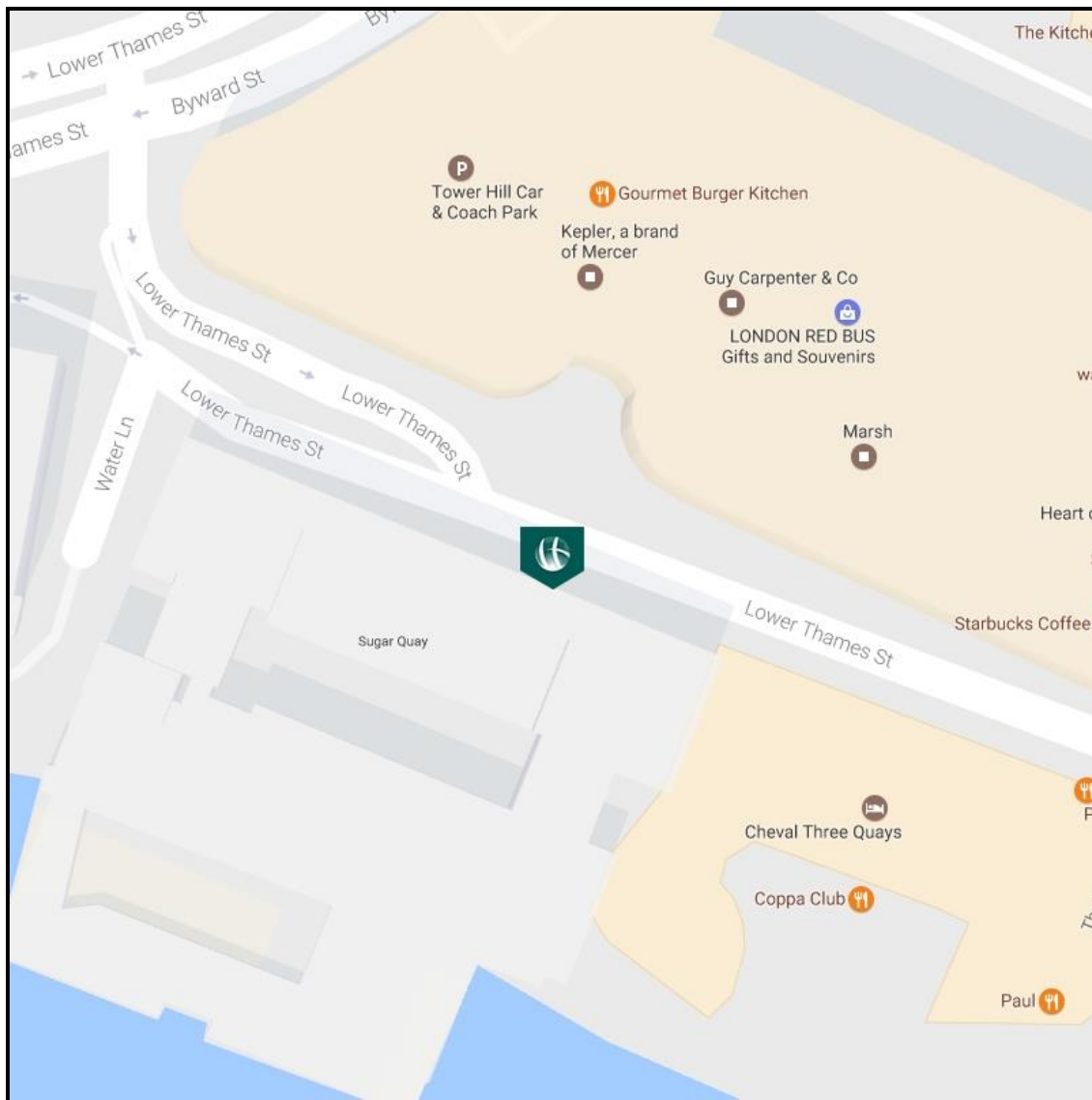
Eighth Floor



Chase Evans makes every attempt to ensure accuracy, however all measurements are approximate.
All aspects of this floor plan are for illustrative purposes only and not to scale. Errors and omissions excepted (E&OE).

LANDMARK PLACE, TOWER HILL, LONDON EC3R

£2,480,000 (Leasehold)



View Property

Contact Information:

City Office

122 Whitechapel High Street, London, E1 7PT

Tel: +44 (0)20 7247 3888

Email: city@chaseevans.co.uk