

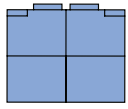
This way to find out all
about what Dawn Homes have
in mind for your new home



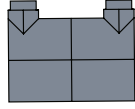
FORDBANK OFFERS 57
BEAUTIFULLY APPOINTED
3 & 4 BEDROOM HOMES

BRIGHTER LIVING





Earn



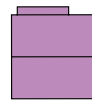
Carrick



Leith



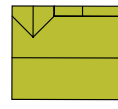
Leven



Annan



Etive



Dochart


JOHNSTONE | SITE PLAN FORDBANK

With its large open green spaces, scenic backdrop, proximity to superb local amenities and safe and secure children's play area, Fordbank couldn't be more family friendly. The leafy development offers seven different house types, and all 57 properties boast truly impressive specifications throughout.

So why not see which bright new home is exactly right for you!
Visit www.dawn-homes.co.uk or call 01505 800360 to arrange a viewing.





- Earn  = 4
- Carrick  = 8
- Leith  = 6
- Leven  = 11
- Annan  = 11
- Etive  = 12
- Dochart  = 5

For all with Sat Nav the postcode for Fordbank at Johnstone is PA10 2NS.
For further directions look online at www.dawn-homes.co.uk

DAWN

HOMES

As part of the Dawn Group, which was founded in 1972, Dawn Homes has grown into one of the country's largest independent property groups. Today, we offer some of the brightest homes across Central Scotland.

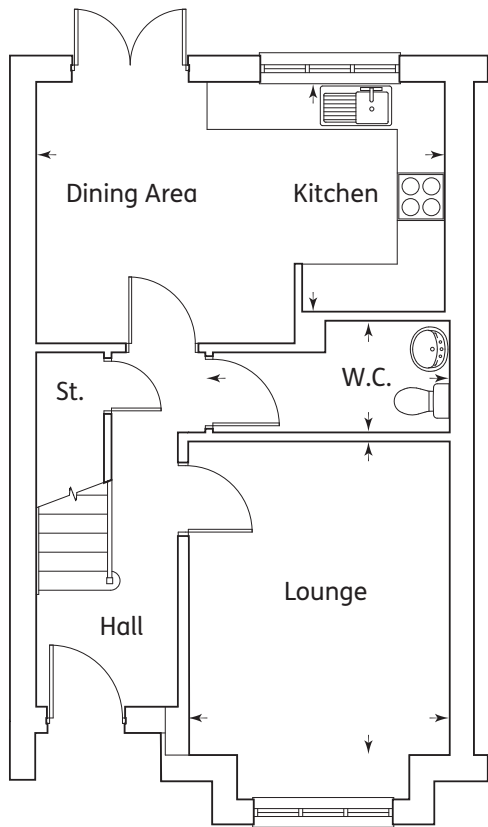


We pride ourselves in providing the highest quality homes, with a customer service to match. From reservation right through to the moment you move in, and beyond, our Directors and staff will be on hand to help you every step of the way.

Our Customer Care is second to none – we provide a fast, efficient service, seven days a week, and for up to two years after the legal completion of your new home.

WHERE FAMILIES SHINE



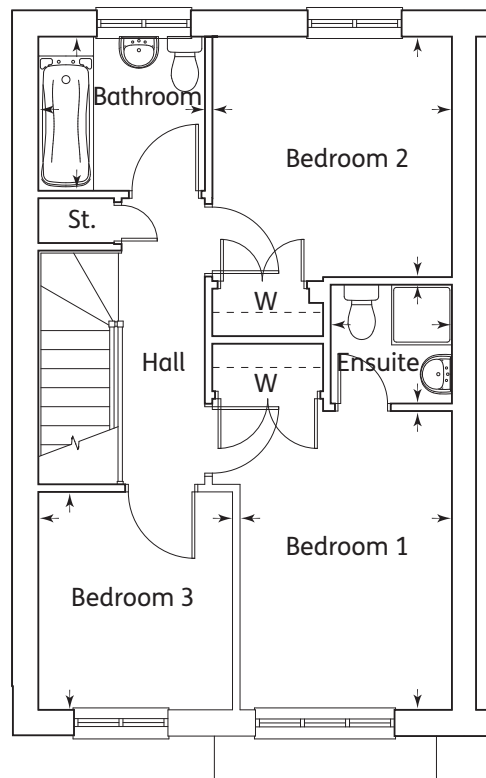


Ground Floor

Kitchen/Dining Area	5.25m x 2.90m	17'2" x 9'6"
Lounge	3.30m x 3.96m	10'10" x 12'11"
W.C.	3.08m x 1.41m	10'1" x 4'7"

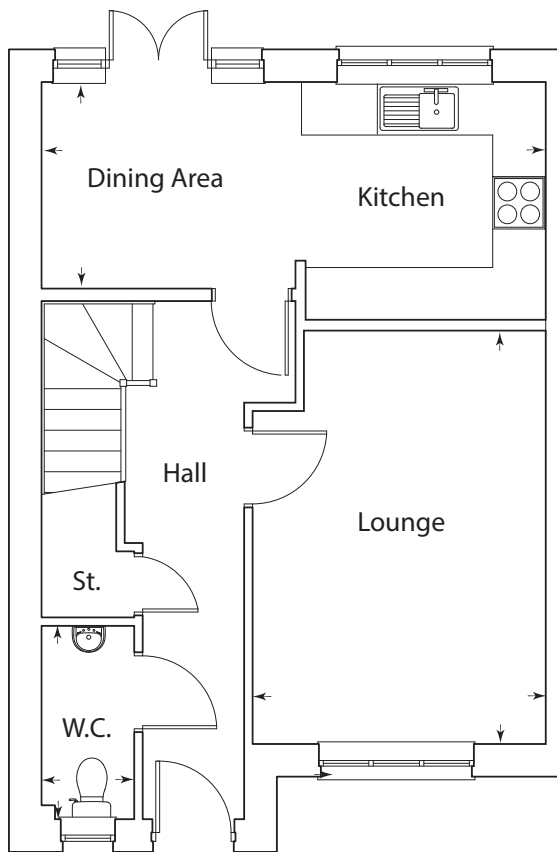
First Floor

Bedroom 1	2.66m x 3.72m	8'8" x 12'2"
Bedroom 2	3.12m x 3.08m	10'2" x 10'1"
Bedroom 3	2.56m x 2.75m	8'4" x 9'0"
Bathroom	2.10m x 1.94m	6'10" x 6'4"
Ensuite	1.53m x 1.50m	5'0" x 4'11"



The Earn (3 Bedroom Home)

- Striking 3 bedroom semi detached home of exceptional character and flexible family living
- Spacious lounge with feature bay window
- Stunning kitchen open plan to large dining area with French doors providing convenient access to rear garden
- Master bedroom with fitted wardrobe and ensuite bathroom
- Exceptional storage throughout

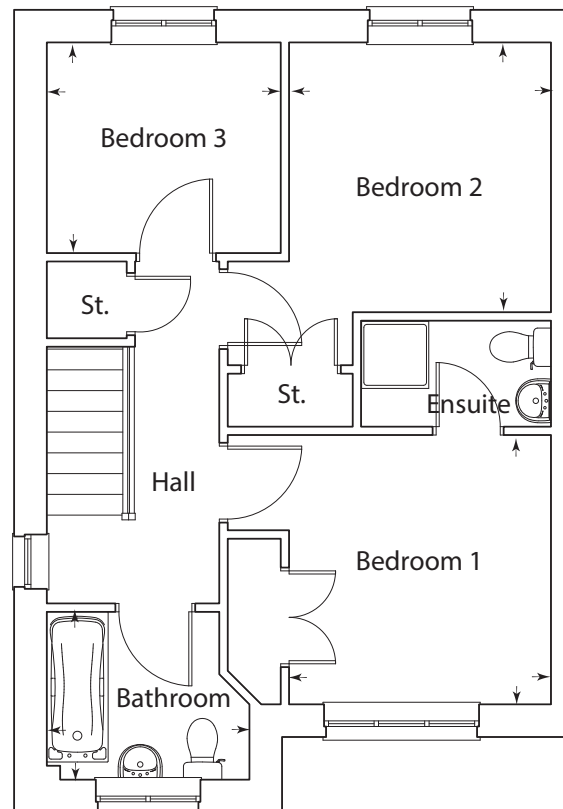


Ground Floor

Kitchen	2.76m x 2.69m	9'1" x 8'10"
Dining	2.94m x 2.33m	9'8" x 7'8"
Lounge	4.68m x 3.31m	15'4" x 10'10"
W.C.	2.19m x 1.05m	7'2" x 3'5"

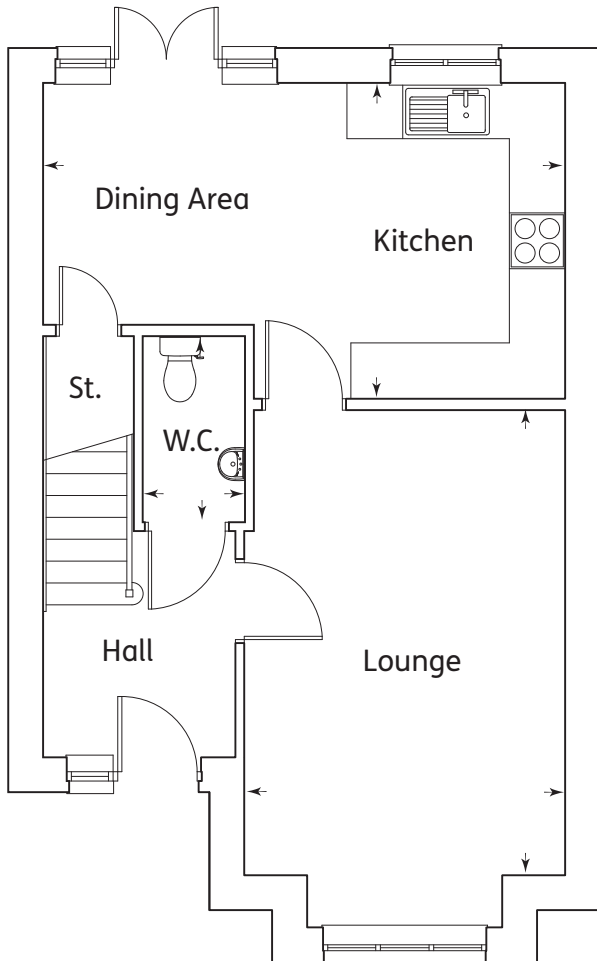
First Floor

Bedroom 1	3.05m x 2.96m	10'0" x 9'8"
Ensuite	2.16m x 1.20m	7'1" x 3'11"
Bedroom 2	3.05m x 2.96m	10'0" x 9'8"
Bedroom 3	2.64m x 2.38m	8'8" x 7'10"
Bathroom	2.29m x 1.90m	7'6" x 6'3"



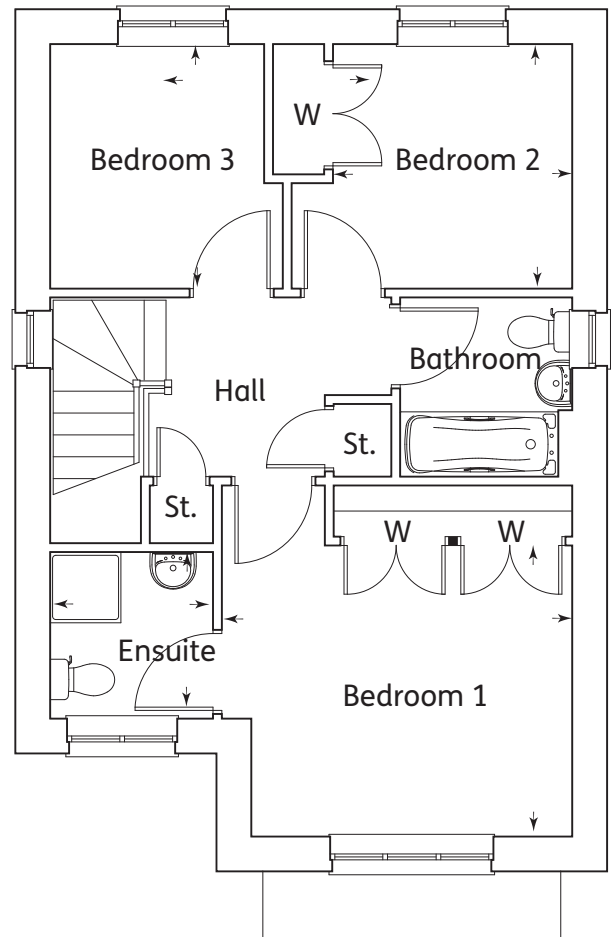
The Carrick (3 Bedroom Home)

- Charming 3 bedroom family home offering practical and flexible family living space
- Spacious lounge offering full height window to maximise daylight
- Stunning Kitchen open plan to large dining area enhanced by feature french doors to garden
- Large master bedroom with fitted wardrobes and ensuite shower room
- Exceptional storage throughout



Ground Floor

Kitchen	3.39m x 2.36m	11'11" x 7'8"
Dining	3.26m x 2.60m	10'8" x 8'6"
Lounge	5.00m x 3.45m	16'4" x 11'3"
W.C.	2.00m x 1.10m	6'7" x 3'7"



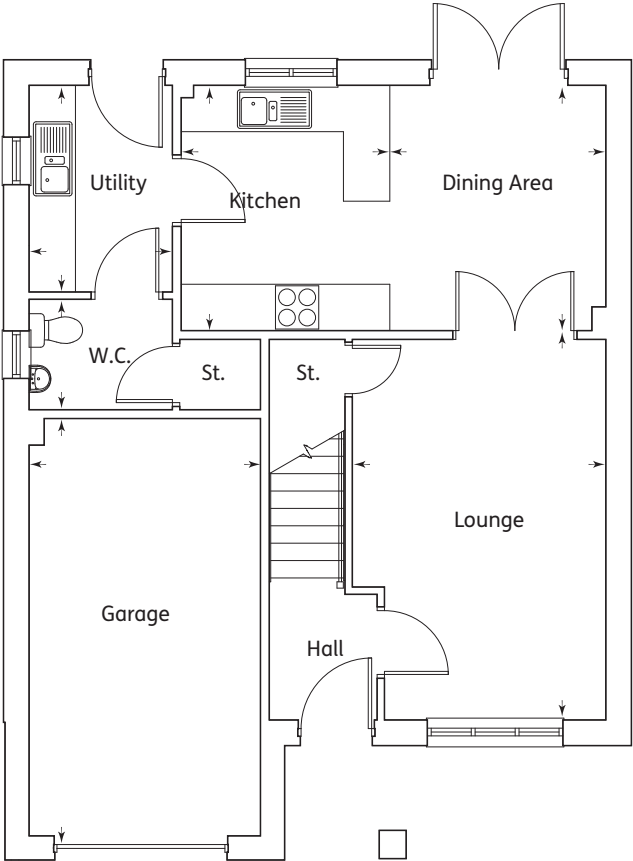
First Floor

Bedroom 1	3.45m x 3.12m	11'3" x 10'3"
Ensuite	1.79m x 1.75m	5'10" x 5'9"
Bedroom 2	2.62m x 2.57m	8'7" x 8'5"
Bedroom 3	2.62m x 2.30m	8'7" x 7'6"
Bathroom	1.92m x 1.84m	6'4" x 6'0"



The Leith (3 Bedroom Home)

- Striking 3 bedroom detached family home offering practical and flexible family living space
- Spacious lounge with feature bay window
- Stunning kitchen open plan to large dining area enhanced by feature french doors to garden
- Exceptional master bedroom with generous fitted wardrobe storage and ensuite shower room
- Exceptional storage throughout

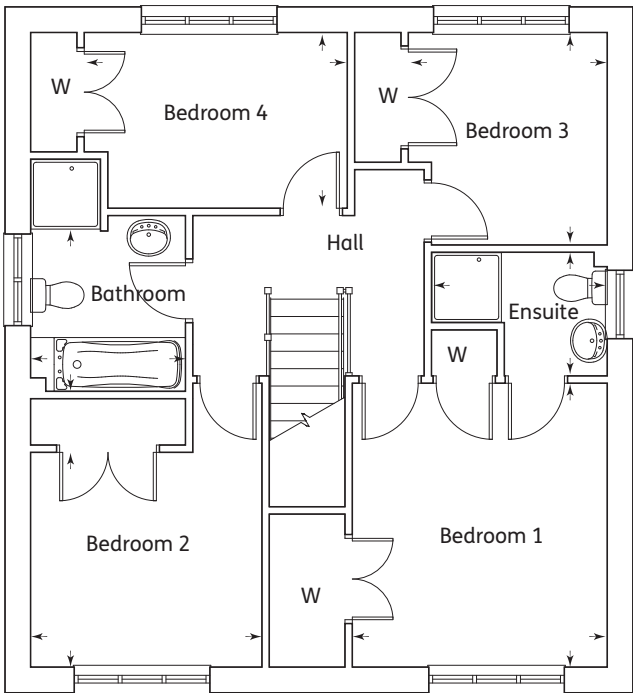


Ground Floor

Kitchen	2.70m x 3.17m	8'10" x 10'5"
Dining Area	2.80m x 3.17m	9'2" x 10'5"
Lounge	3.28m x 4.93m	10'9" x 16'1"
Utility	1.85m x 2.67m	6'1" x 8'9"
W.C.	1.85m x 1.43m	6'1" x 4'8"
Garage	2.99m x 5.41m	9'10" x 17'8"

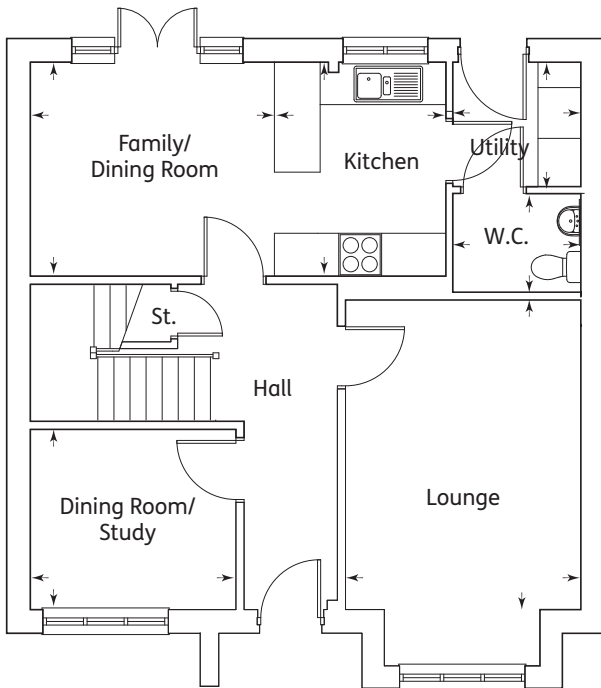
First Floor

Bedroom 1	3.30m x 3.67m	10'10" x 12'0"
Bedroom 2	2.99m x 2.78m	9'10" x 9'1"
Bedroom 3	2.57m x 2.75m	8'5" x 9'0"
Bedroom 4	3.40m x 2.27m	11'2" x 7'5"
Bathroom	2.00m x 2.72m	6'7" x 6'9"
Ensuite	2.27m x 1.60m	7'5" x 5'3"



The Leven (4 Bedroom Home)

- Charming 4 bedroom home offering spacious and practical family living
- Single integral garage
- Spacious lounge with feature window providing exceptional natural daylight
- Stunning kitchen open plan to large dining area with French doors providing convenient access to rear garden
- Separate utility room
- Spacious master bedroom with fitted wardrobes and ensuite bathroom
- Family bathroom with additional separate shower

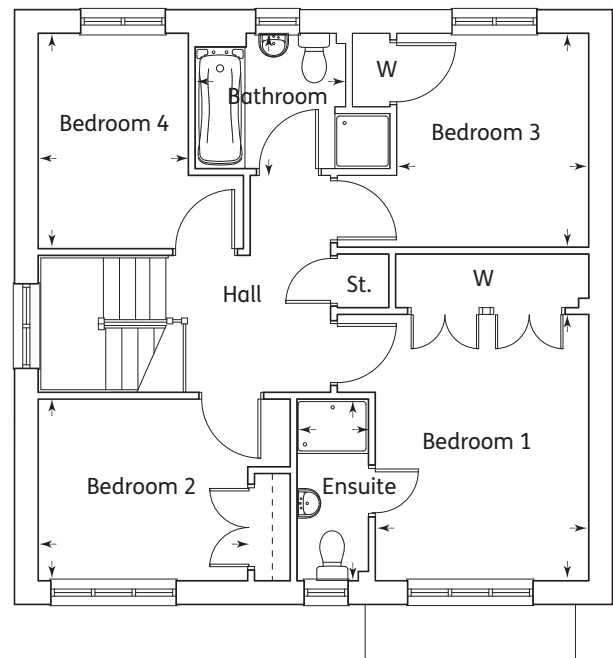


Ground Floor

Kitchen	2.40m x 2.99m	7'10" x 9'9"
Family/ Dining Room	3.40m x 2.99m	11'2" x 9'9"
Lounge (excluding bay)	3.29m x 4.39m	10'9" x 14'4"
Dining Room/Study	2.87m x 2.47m	9'5" x 8'1"
Utility	1.79m x 1.59m	5'10" x 5'3"
W.C.	1.79m x 1.43m	5'10" x 4'8"

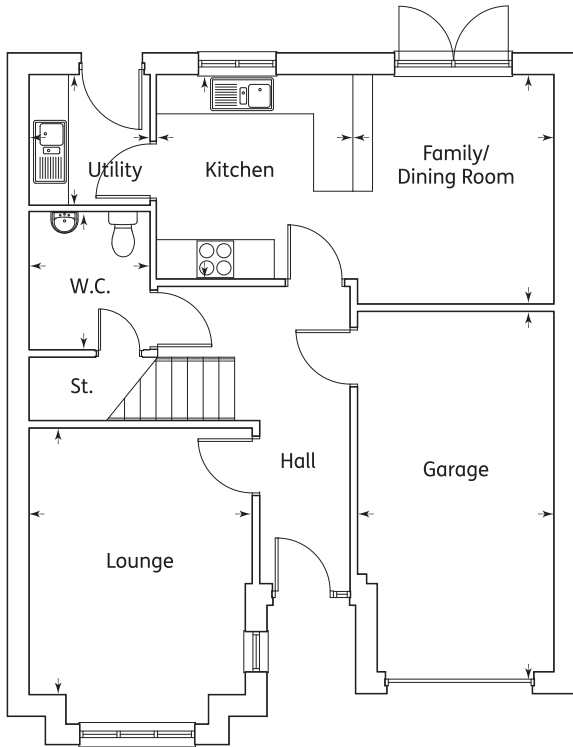
First Floor

Bedroom 1	2.98m x 3.72m	9'9" x 12'2"
Bedroom 2	2.93m x 2.49m	9'7" x 8'2"
Bedroom 3	2.68m x 2.99m	8'9" x 9'9"
Bedroom 4 (min.)	2.10m x 3.01m	6'10" x 9'10"
Bathroom	2.10m x 1.89m	6'11" x 6'2"
Ensuite	1.00m x 2.49m	3'3" x 8'2"



The Annan (4 Bedroom Home)

- Impressive 4 bedroom home offering practical and flexible family living
- Spacious lounge with feature bay window
- Stunning kitchen open plan to large dining/family room with feature French doors and sidelights providing exceptional natural daylight and access to rear garden
- Separate utility room
- Spacious master bedroom with fitted wardrobe and ensuite bathroom
- Family bathroom with additional separate shower

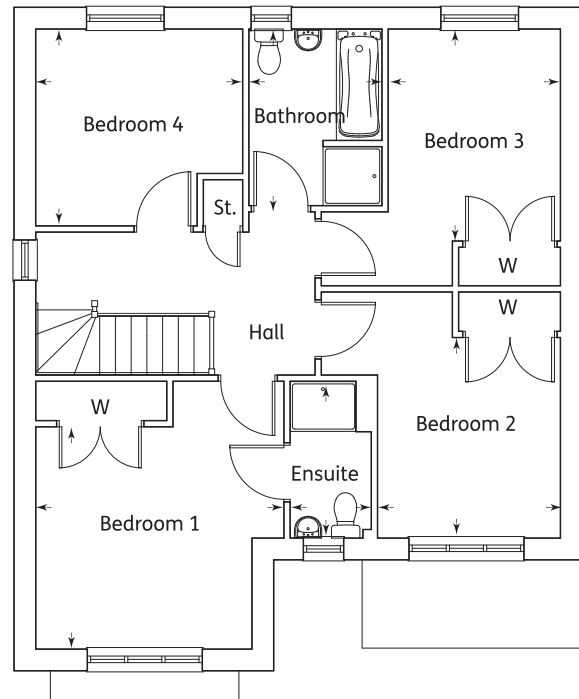


Ground Floor

Kitchen	3.00m x 3.12m	9'10" x 10'2"
Family/ Dining Room	3.06m x 3.50m	10'0" x 11'4"
Lounge	3.40m x 4.06m	11'2" x 13'4"
Utility	1.85m x 2.00m	6'0" x 10'2"
W.C.	1.85m x 2.11m	6'0" x 6'11"
Garage	3.00m x 5.52m	9'10" x 18'0"

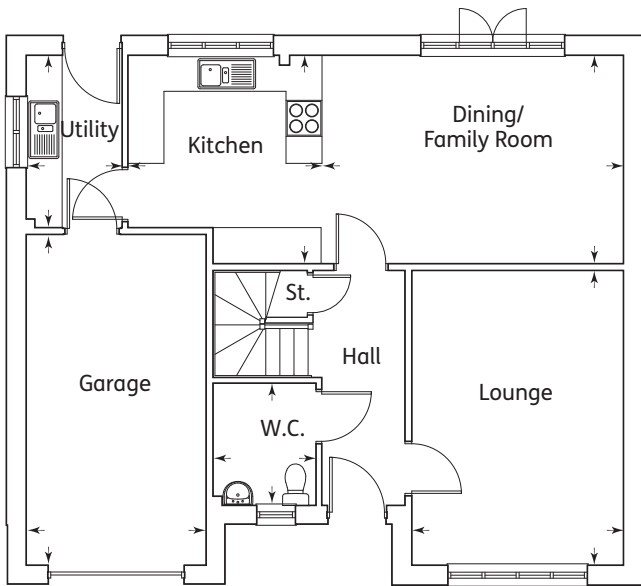
First Floor

Bedroom 1	3.78m x 3.39m	12'5" x 11'1"
Bedroom 2	2.79m x 3.06m	9'2" x 10'0"
Bedroom 3	2.63m x 3.24m	8'7" x 10'7"
Bedroom 4	3.16m x 3.00m	10'4" x 9'10"
Bathroom	2.03m x 2.70m	6'8" x 10'0"
Ensuite	1.24m x 2.39m	4'1" x 7'10"



The Etive (4 Bedroom Home)

- Charming 4 bedroom home offering spacious and practical family living
- Single integral garage
- Spacious lounge with feature bay window
- Stunning kitchen open plan to large dining/family room with French doors providing access to rear garden
- Spacious master bedroom with fitted wardrobe and ensuite bathroom
- Family bathroom with additional separate shower

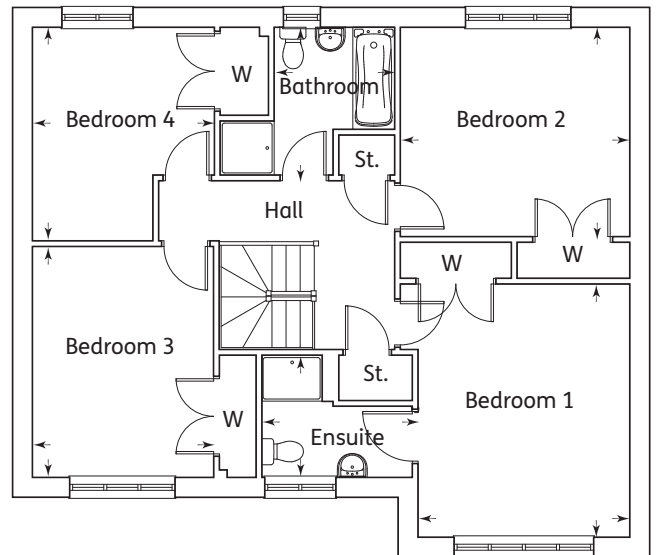


Ground Floor

Kitchen	3.22m x 3.47m	10'7" x 11'4"
Dining/Family Room	5.02m x 3.47m	16'5" x 11'4"
Lounge	3.52m x 4.91m	11'6" x 16'1"
Utility	1.60m x 2.87m	5'3" x 9'5"
W.C.	1.72m x 2.03m	5'7" x 6'8"
Garage	3.00m x 5.50m	9'10" x 18'0"

First Floor

Bedroom 1	3.53m x 4.22m	11'6" x 13'10"
Bedroom 2	3.82m x 3.48m	12'6" x 11'5"
Bedroom 3	3.02m x 3.85m	9'10" x 12'7"
Bedroom 4	3.02m x 3.55m	9'11" x 11'8"
Bathroom	2.01m x 2.46m	6'7" x 8'1"
Ensuite	2.50m x 2.04m	8'2" x 6'8"



The Dochart (4 Bedroom Home)

- Impressive 4 bedroom home offering practical and flexible family living
- Single integral garage
- Entrance hallway with feature staircase
- Spacious lounge featuring full height window
- Stunning kitchen open plan to large dining/family room with feature French doors and sidelights providing exceptional natural daylight and access to rear garden
- Separate utility room
- Spacious master bedroom with fitted wardrobes and ensuite bathroom
- Family bathroom with additional separate shower