



Where quality homes  
are truly affordable

# Moreton Park

Moreton-in-Marsh, Gloucestershire



“A collection of stylish new homes available to buy with Shared Ownership”



## Moreton Park – providing modern living in the picturesque Cotswolds

Situated within the beautiful market town of Moreton-in-Marsh, our desirable new homes at Moreton Park blend a sought-after location with a price you can afford.

Our stylish collection offers a range of houses, coach houses and apartments, available to purchase with Shared Ownership. Each new home is designed with you in mind and finished to a high standard to provide you with all the comforts you expect for today's busy lifestyle.

This desirable development uses a mixture of modern styles and finishes to create a unique landscape that envelops a village green and children's play area. Whilst the town's many

shops and amenities are only a few minutes away on the High Street, part of the Roman Fosse Way.

The town lies at the gateway of four original county shires: Warwickshire, Oxfordshire, Worcestershire and Gloucestershire, in an area of 'outstanding natural beauty'. Designated as a principal market town, Moreton-in-Marsh maintains a thriving weekly market, offering local produce, fruit and gifts, attracting both tourists and residents alike.



Discover the area  
Enjoy the beauty of the Cotswolds



Idyllic scenes of the local countryside

Moreton-in-Marsh is a warm and bustling community. The broad High Street with its elegant Cotswold stone buildings, ensure you are well catered for with a range of independent shops, banks and restaurants. Whilst the local post office, medical centre and schools, provide for your family's daily needs.

The area hosts a variety of sporting opportunities and interest groups, ensuring activities for all ages. Queen Victoria Park at the north of the town is home to the local cricket club. Whilst the leisure and sporting facilities at the Fire Service College, enable you to unwind after a busy day.

Alternatively, discover the stunning scenery within the local area. Moreton-in-Marsh is situated at the head of the Evenlode Valley in the northern Cotswolds. The area is home to beautiful river valleys and charming villages for you to explore, including Bourton-on-the-Water and the Batsford Arboretum with its colourful collection of rare and unusual trees.

However, this rural area is by no means isolated. The local train station provides regular services to London, Reading and Oxford, whilst the A429 ensures good access to Cirencester and the A44 to Chipping Norton.



**Local amenities**

- 1 Supermarket
- 2 Doctors surgery
- 3 Post Office
- 4 Dentist
- 5 Hospital
- 6 Library

**Schools**

- A St David's Primary School, East Street, GL56 0LQ
- B Dormer House School, High Street, GL56 0AD

## Why choose a Shared Ownership home?



### A simple way to own your home without a large mortgage

These quality homes are truly affordable, thanks to Sovereign Living and Shared Ownership. Purchase an initial share in your home, normally 40%, and pay a discounted rent on the rest. Then, when you are ready, you can buy further shares in your home until you own it outright.



### A modern home... for today's hectic lifestyle.

Each of our homes are expertly designed to provide you with all the benefits of modern living.

#### Peace of mind

Every home comes with a ten year NHBC warranty, so there will be no unexpected major property repairs.

#### Safe and secure

Safety of your home and your family is a priority. Through the use of fire resistant materials, circuit breakers and smoke alarms as standard, our homes provide you with security and peace of mind.

#### Easy to maintain

By using modern building materials, a new Sovereign Living home can remove the unexpected and potentially expensive maintenance and repairs that purchasing an older property may necessitate.

#### Energy efficient

With effective insulation, progressive building techniques and uPVC double glazing, a new home will offer greater energy efficiency. This means lower bills and a smaller carbon footprint.





Phone: 0845 602 1618  
Email: [living@sovereign.org.uk](mailto:living@sovereign.org.uk)  
Website: [www.sovereignliving.org.uk](http://www.sovereignliving.org.uk)

Sovereign Housing Association Limited  
Woodlands, 90 Bartholomew Street,  
Newbury RG14 5EE

We operate a policy of continuous product development and individual features such as windows and elevational treatments may vary. Consequently, particulars contained within this document should be treated as general guidance only. They do not constitute a contract, part of a contract or a warranty. Computer generated images and photographs are for illustration purposes only and do not accurately depict individual plots.

Sovereign Living is a trading name of Sovereign Housing Association Limited, a charitable association.

Images provided courtesy of Moreton-in-Marsh Town Council and [www.cotswolds.com](http://www.cotswolds.com)





## Moreton Park, Moreton-in-Marsh

### Home specification

#### All properties

- High quality fitted kitchen
- Stainless steel electric fan oven, gas hob and extractor hood
- Modern white bathroom suite
- Thermostatic shower with glass shower screen
- Chrome heated towel rails (on selected homes)
- Tiles/Karndean flooring within the kitchen (on selected homes)
- Gas central heating
- TV points within master bedroom and lounge
- Double glazing
- Secured by Design windows and doors
- Four panelled internal doors with chrome plated ironmongery (on selected homes)
- Allocated parking
- Ten year NHBC warranty

#### Coach houses only

- Garage

#### Houses only

- Vinyl flooring within the bathroom and WC
- Enclosed rear garden laid to lawn
- Garden shed
- Rain water butt
- Rotary dryer

#### Apartments only

- Door entry phone system
- Cycle storage
- Bin storage

**For more information on Moreton Park, or other Shared Ownership properties, please contact Sovereign Living**

**0845 602 1618**

**[www.sovereignliving.org.uk](http://www.sovereignliving.org.uk)**

We operate a policy of continuous product development and individual features such as windows and elevational treatments may vary. Consequently, particulars contained within this document should be treated as general guidance only. They do not constitute a contract, part of a contract or a warranty. Computer generated images and photographs are for illustration purposes only and do not accurately depict individual plots. Sovereign Living is a trading name of Sovereign Housing Association Limited, a charitable association.

## Moreton Park, Moreton-in-Marsh

### Site plan - Phase 1



**0845 602 1618**

**[www.sovereignliving.org.uk](http://www.sovereignliving.org.uk)**

We operate a policy of continuous product development and individual features such as windows and elevational treatments may vary. Consequently, particulars contained within this document should be treated as general guidance only. They do not constitute a contract, part of a contract or a warranty. Computer generated images and photographs are for illustration purposes only and do not accurately depict individual plots. Sovereign Living is a trading name of Sovereign Housing Association Limited, a charitable association.

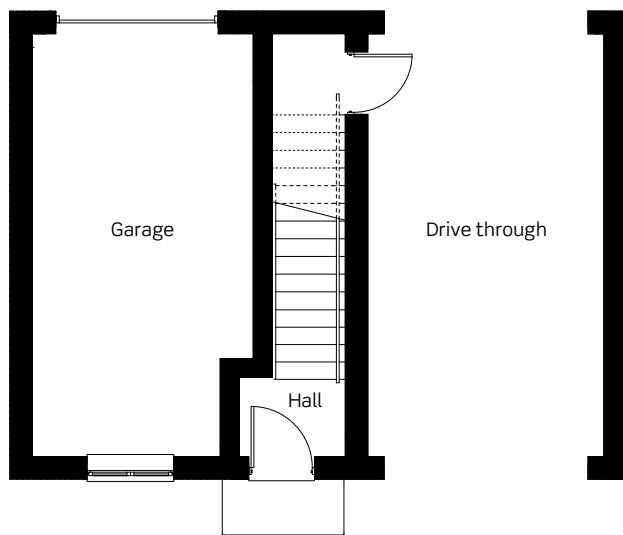




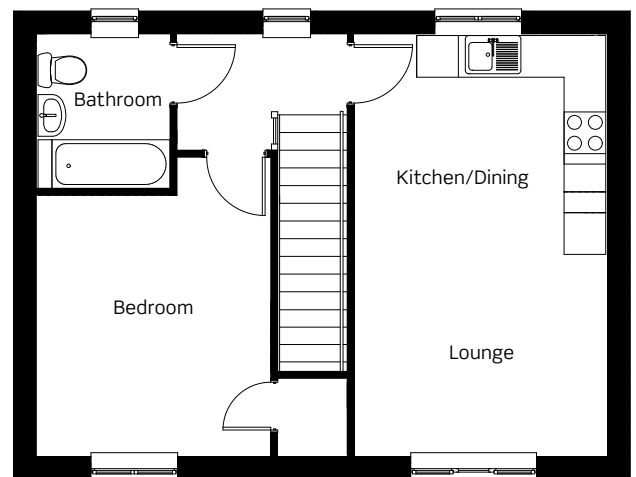
## The Lemington

### One bedroom coach house

Moreton Park, Moreton-in-Marsh



Ground floor



First floor

**0845 602 1618**  
**[www.sovereignliving.org.uk](http://www.sovereignliving.org.uk)**

We operate a policy of continuous product development and individual features such as windows and elevational treatments may vary. Consequently, particulars contained within this document should be treated as general guidance only. They do not constitute a contract, part of a contract or a warranty. Computer generated images and photographs are for illustration purposes only and do not accurately depict individual plots. Sovereign Living is a trading name of Sovereign Housing Association Limited, a charitable association.

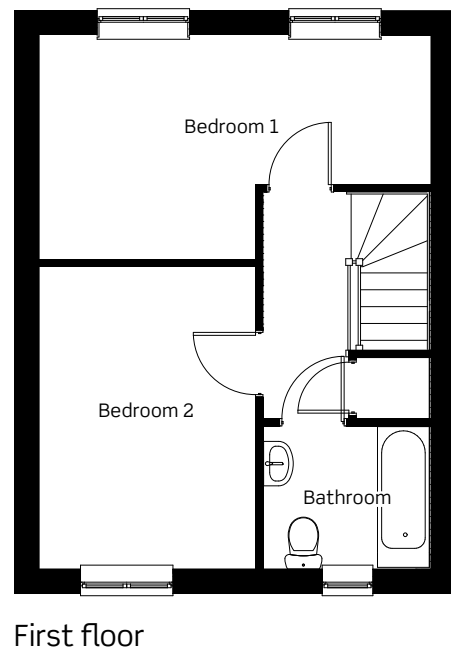
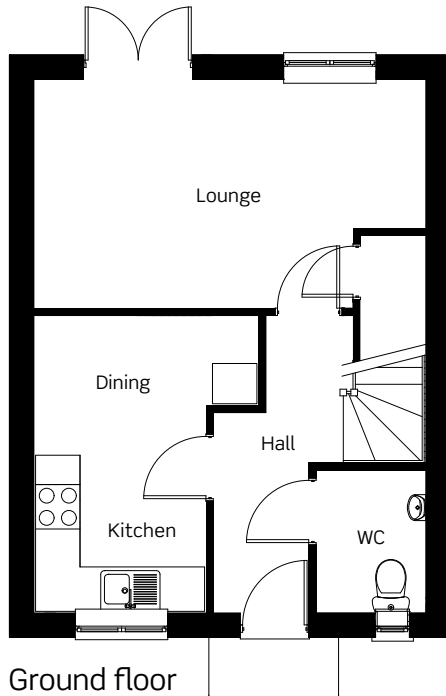




## The Compton

### Two bedroom house

Moreton Park, Moreton-in-Marsh



**0845 602 1618**  
**[www.sovereignliving.org.uk](http://www.sovereignliving.org.uk)**

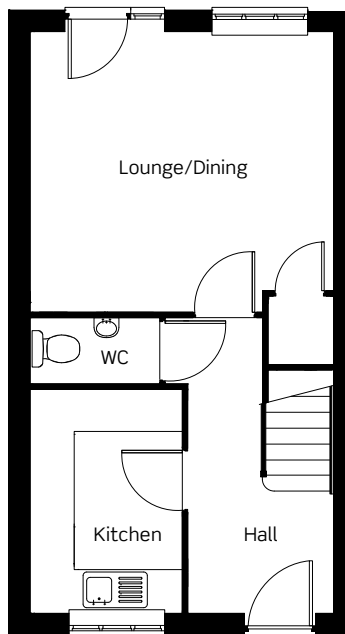
We operate a policy of continuous product development and individual features such as windows and elevational treatments may vary. Consequently, particulars contained within this document should be treated as general guidance only. They do not constitute a contract, part of a contract or a warranty. Computer generated images and photographs are for illustration purposes only and do not accurately depict individual plots. Sovereign Living is a trading name of Sovereign Housing Association Limited, a charitable association.



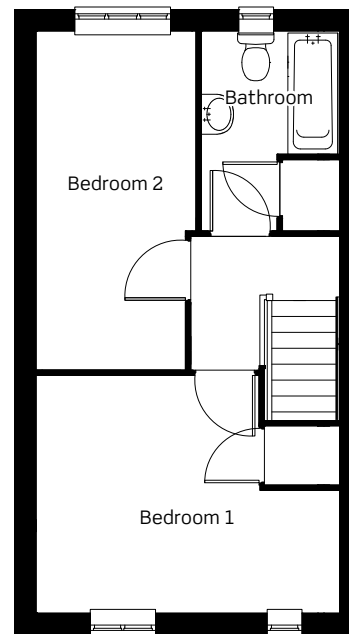
## The Draycott

### Two bedroom house

Moreton Park, Moreton-in-Marsh



Ground floor



First floor

**0845 602 1618**  
**[www.sovereignliving.org.uk](http://www.sovereignliving.org.uk)**

We operate a policy of continuous product development and individual features such as windows and elevational treatments may vary. Consequently, particulars contained within this document should be treated as general guidance only. They do not constitute a contract, part of a contract or a warranty. Computer generated images and photographs are for illustration purposes only and do not accurately depict individual plots. Sovereign Living is a trading name of Sovereign Housing Association Limited, a charitable association.