

# Sandlands

Sandlands Way, Forest Town, Mansfield NG19 0LY

Sandlands is a fantastic development of 2, 3, 4 and 5 bedroom homes



[www.dwh.co.uk](http://www.dwh.co.uk)

*Where quality lives*

David Wilson Homes



# Sandlands

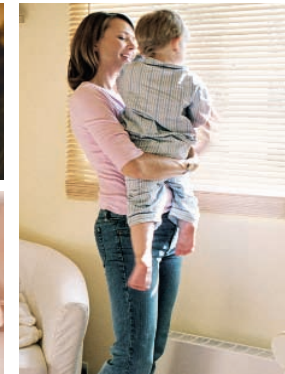
Sandlands Way, Forest Town, Mansfield NG19 0LY

Sandlands is a fantastic development of 2, 3, 4 and 5 bedroom homes

Sandlands is close to the centre of Forest Town, on the outskirts of Mansfield. It's a perfect safe haven for families, with playgrounds and green spaces dotted around.

There are everyday shops just moments from your front door and legend-bound Sherwood Forest is also just a short drive away.

With two to five bedroom homes available, you can make this your home whatever your family's size.



*Where quality lives*

**David Wilson Homes**

# Local amenities

## LOCAL DETAILS

Local Authority:  
Mansfield District Council Civic Centre, Chesterfield Road South, Mansfield,  
Nottinghamshire NG19 7BH  
01623 463 463

Main Post Office  
115 Clipstone Road West, Forest Town, Mansfield, Nottinghamshire NG19 0BT  
01623 623 090

Royal Mail Customer Helpline  
0845 774 0740

Visitor Tourist Information  
Nottingham Tourism  
08444 775 678

Local Library  
Westgate, Mansfield, Nottinghamshire NG18 1NH  
01623 627 591

Forest Town Library,  
Clipstone Road West, Mansfield, NG19 0AA  
01623 623 395

Citizens Advice  
Queens Walk, Mansfield, Nottinghamshire NG18 1JX  
01623 627 163

## SERVICES

Water  
Severn Trent Water, 2297 Coventry Road, Birmingham  
0845 750 0500

Gas and Electric Supplier  
E-on  
0800 051 0760

Local Police Station  
Great Central Road, Mansfield, Nottinghamshire NG18 2HQ  
0300 300 9999

Local Fire Station  
Nottingham Fire & Rescue Service, Rosemary Street, Mansfield NG19 6AB  
01623 666 270

FOR ALL EMERGENCIES CALL 999

## HEALTH

Doctors  
Doctors Ward, Pearce & Simm, Wood Street, Mansfield NG18 1QB  
01623 664 877

Local Health Centres  
Oakwood Surgery, Church Street, Mansfield, Nottinghamshire NG19 8BL  
0844 477 8557

Orchard Medical Practise,  
Crow Hill Drive, Mansfield, Nottinghamshire NG19 7AE  
01623 400 100

Hospitals  
Kings Mill, Mansfield Road, Sutton In Ashfield, Nottinghamshire NG17 4JL  
01623 622 515

Mansfield Community Hospital, Stockwell Gate, Mansfield NG18 5QE  
01623 785 050

Dentist  
CMJ Kirkpatrick, 23a High Street, Mansfield Woodhouse, Mansfield,  
Nottinghamshire NG19 8BB  
01623 655 423

Shine Dental Care, Fulmar Close, Mansfield NG19 0GG  
0845 450 6272

## EDUCATION

Derbyshire County Council Education Department  
01246 234 745

Forest Town Primary School,  
Clipstone Road West, Mansfield NG19 0ED  
01623 477 211

The Brunts School,  
The Park, Mansfield, Nottinghamshire NG18 2AT  
01623 623 149

Holly Primary School,  
Holly Drive, Forest Town, Mansfield, Nottinghamshire NG19 0NT

Leas Park Junior School,  
Ley Lane, Mansfield Woodhouse, Mansfield, Nottinghamshire NG19 8LD

The Manor Academy,  
Park Hall Road, Mansfield Woodhouse, Mansfield NG19 8QA  
01623 425 100

## SHOPPING, RECREATION & LEISURE FACILITIES

For everyday shopping there is a large Asda supermarket nearby together with further small convenience shops and places to eat. Those of you that want to shop till you drop, why not try McCarthur Glen outlet centre or the Four Season Centre Westgate, both located in Mansfield. For great days out there are a plethora of opportunities. Sherwood Forest Country Park, which can be viewed on the horizon has some beautiful walks, a visitors centre & restaurant and offers a range of events throughout the year. Lockwell Hill Activity Centre at nearby Farnsfield has a variety of activities for the more adventurous. These include quad biking, 4x4 off road driving and archery, or for those who like to take a more leisurely pace there is Chatsworth House and the Peak District National Park.

## TRANSPORT FACILITIES

Roads:  
Located between junctions 27, 28 & 29 of the M1.  
Served by A1 via: Newark upon Trent

Buses:  
Stagecoach  
Trent Barton Buses  
Veolia (Dunn-Line)  
National Express

Train:  
Mansfield Train Station,  
Station Road, Mansfield NG18 5RN

Airport:  
East Midlands Airport,  
Castle Donington, Derbyshire DE74 2SA  
0871 909 9000

dwh.co.uk

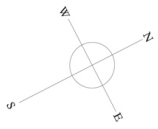
*Where quality lives*



David Wilson Homes

# Sandlands

Sandlands Way, Mansfield, NG19 0LY



- **The Winton** P206  
2 Bedroom House
- **The Wincham** P230  
2 Bedroom House
- **The Nugent** T307  
3 Bedroom House
- **The Hadley** P341  
3 Bedroom House
- **The Archford** P382  
3 Bedroom House
- **The Drummond** H408  
4 Bedroom House
- **The Milford** H411  
4 Bedroom House
- **The Winstone** H421  
4 Bedroom House
- **The Cornell** H433  
4 Bedroom House
- **The Layton** H436  
4 Bedroom House
- **The Hurst** H451  
4 Bedroom House
- **The Holden** H469  
4 Bedroom House
- **The Chelworth** H497  
4 Bedroom House
- **The Emerson** H500  
5 Bedroom House
- **The Moorecroft** H536  
5 Bedroom House

SC Sales Centre

SH Show Home

CP Sale Centre Car Park

- Denotes Affordable Plots (Rented Housing)
- Denotes Affordable Plots (Shared Ownership)
- ① Denotes A1 Housing Specification
- ② Denotes A2 Housing Specification
- ③ Denotes A3 Housing Specification

Please refer to Engineering Layout for detailed information regarding site level variations.





# The Hadley

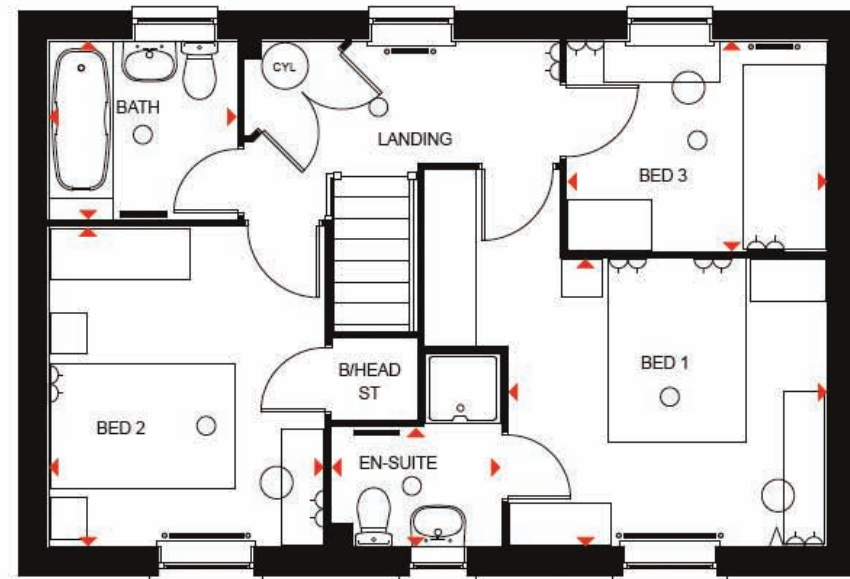
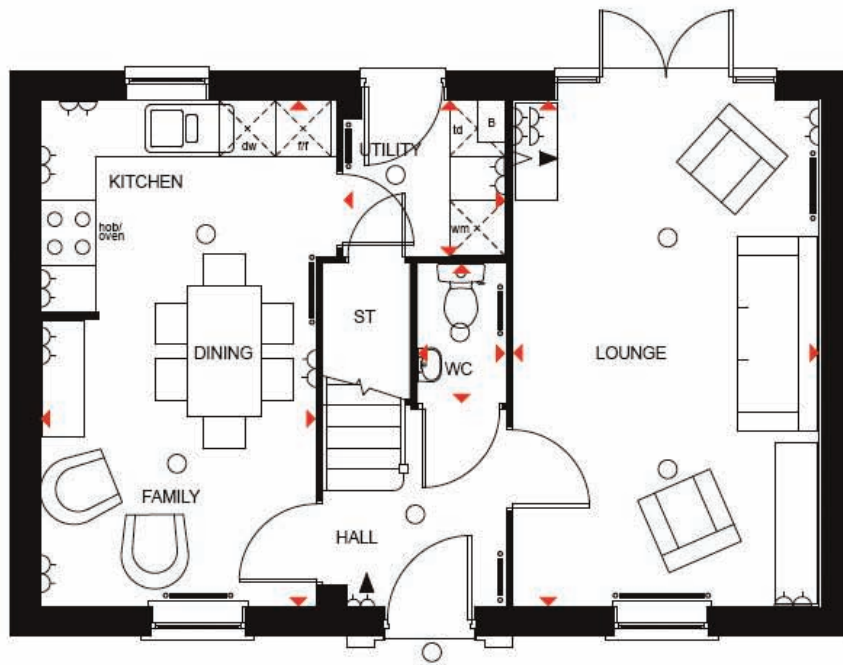
Three bedroom detached home

## Ground Floor

Lounge	5455 x 3300 mm	17'11" x 10'10"
Kitchen/Family/Dining	5455 x 2966 mm	17'11" x 9'9"
Utility	1742 x 1675 mm	5'9" x 5'6"
WC	1497 x 935 mm	4'11" x 3'1"

## First Floor

Bed 1	3438 x 3101 mm	11'3" x 10'2"
En-suite	1818 x 1275 mm	6'0" x 4'2"
Bed 2	3341 x 2966 mm	11'3" x 9'9"
Bed 3	2798 x 2265 mm	9'2" x 7'5"
Bath	2025 x 1925 mm	6'8" x 6'4"



<b>KEY</b>	○ Light fitting	◀ Telephone outlet point	— Radiator	B Boiler	CYL Cylinder	wm Washing machine space	td Tumble dryer space
	◊ Electric socket	◁ T.V. aerial socket	— Towel radiator	ST Store	f/f Fridge/freezer space	dw Dishwasher space	◄ Dimension location



# The Hadley

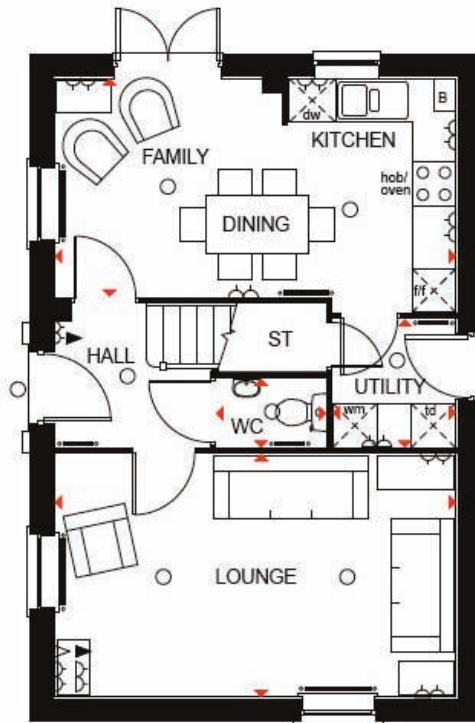
Three bedroom detached home

## Ground Floor

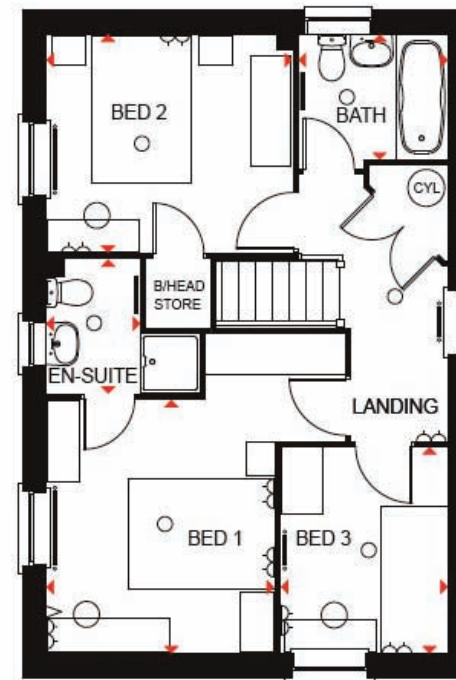
Lounge	5455 x 3300 mm	17'11" x 10'10"
Kitchen/Family/Dining	5455 x 2966 mm	17'11" x 9'9"
Utility	1742 x 1675 mm	5'9" x 5'6"
WC	1497 x 935 mm	4'11" x 3'1"

## First Floor

Bed 1	3438 x 3101 mm	11'3" x 10'2"
En-suite	1818 x 1275 mm	6'0" x 4'2"
Bed 2	3341 x 2966 mm	11'3" x 9'9"
Bed 3	2798 x 2265 mm	9'2" x 7'5"
Bath	2025 x 1700 mm	6'8" x 5'7"



Ground Floor



First Floor

- KEY**
- Light fitting
  - ◀ Telephone outlet point
  - Radiator
  - B Boiler
  - CYL Cylinder
  - wm Washing machine space
  - td Tumble dryer space
  - ◁ Electric socket
  - ◁ T.V. aerial socket
  - Towel radiator
  - ST Store
  - f/f Fridge/freezer space
  - dw Dishwasher space
  - ◄ Dimension location



# The Layton

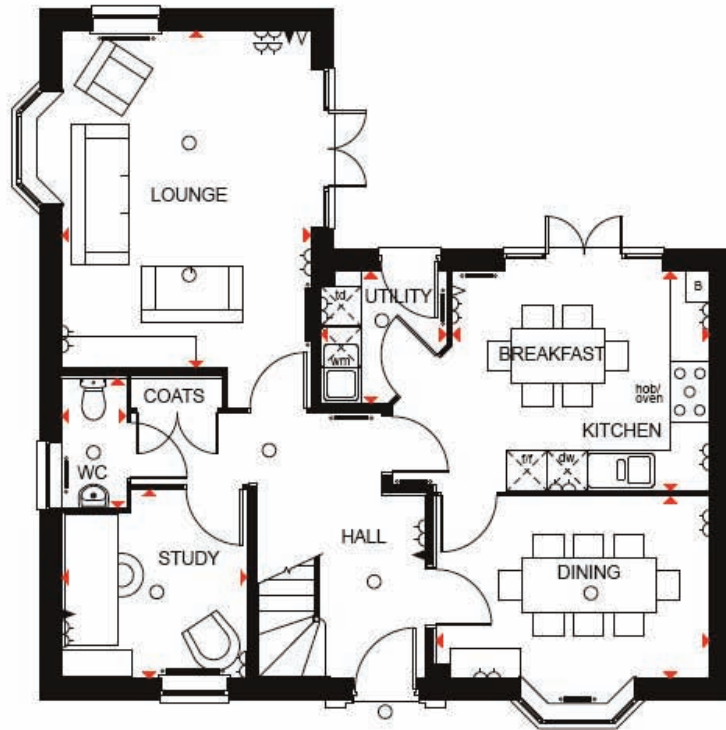
Four bedroom detached home

## Ground Floor

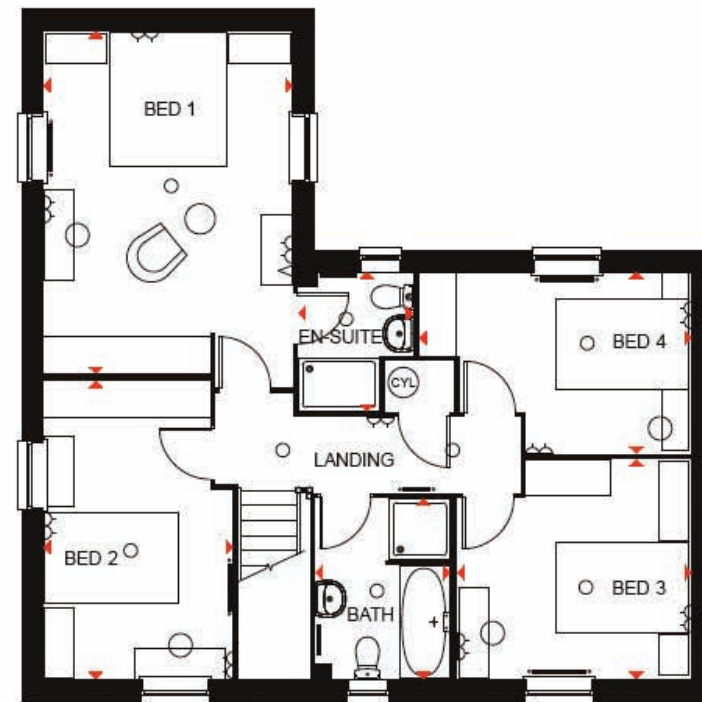
Lounge	5455 x 3300 mm	17'11" x 10'10"
Kitchen/Family/Dining	5455 x 2966 mm	17'11" x 9'9"
Utility	1742 x 1675 mm	5'9" x 5'6"
WC	1497 x 935 mm	4'11" x 3'1"

## First Floor

Bed 1	3438 x 3101 mm	11'3" x 10'2"
En-suite	1818 x 1275 mm	6'0" x 4'2"
Bed 2	3341 x 2966 mm	11'3" x 9'9"
Bed 3	2798 x 2265 mm	9'2" x 7'5"
Bath	2025 x 1925 mm	6'8" x 6'4"



Ground Floor



First Floor

<b>KEY</b>	○	Light fitting	◀	Telephone outlet point	—	Radiator	B	Boiler	CYL	Cylinder	wm	Washing machine space	td	Tumble dryer space
	◊	Electric socket	◁	T.V. aerial socket	—	Towel radiator	ST	Store	fff	Fridge/freezer space	dw	Dishwasher space	◄►	Dimension location



# The Cornell

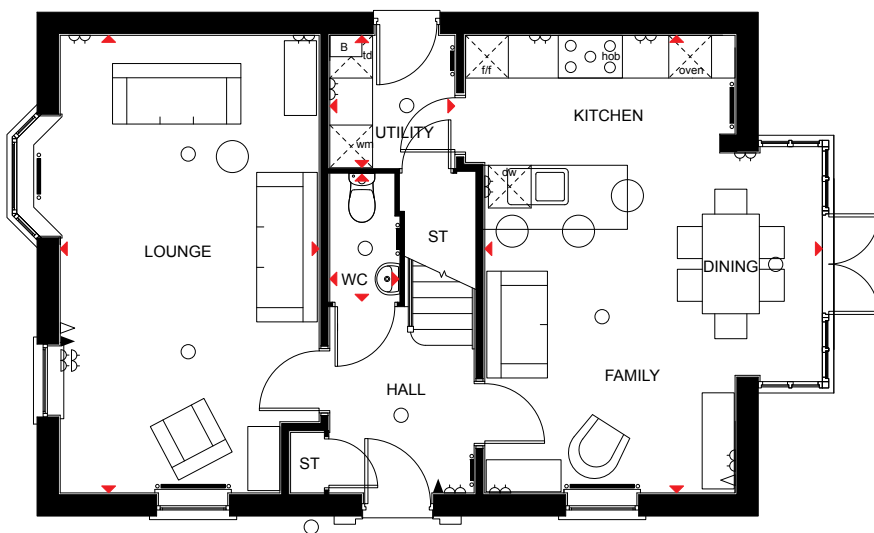
Four bedroom detached home

## Ground Floor

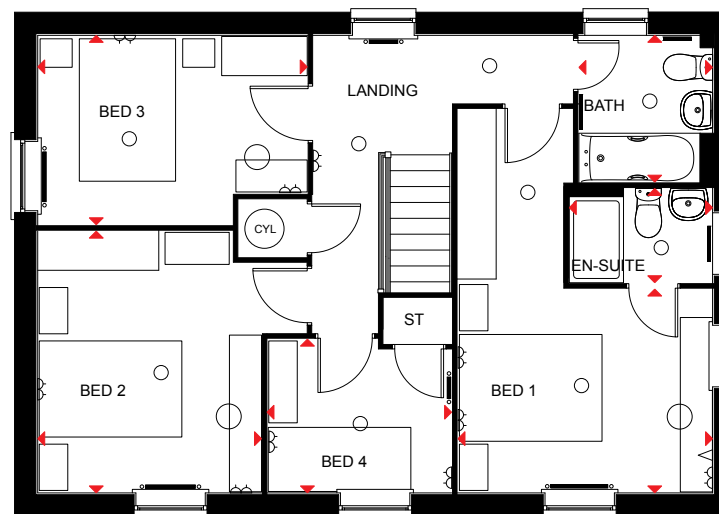
Lounge	6427 x 3631 mm	21'1" x 11'1"
Kitchen/Family/Dining	6427 x 4735 mm	21'1" x 15'6"
Utility	1860 x 1754 mm	6'1" x 5'9"
WC	1786 x 971 mm	5'10" x 3'2"

## First Floor

Bed 1	2864 x 3571 mm	9'8" x 11'9"
En-suite	2010 x 1324 mm	6'7" x 4'3"
Bed 2	3677 x 3139 mm	12'1" x 10'3"
Bed 3	3780 x 2661 mm	12'5" x 8'9"
Bed 4	2590 x 2160 mm	8'6" x 7'1"
Bath	2062 x 1875 mm	6'7" x 6'2"



Ground Floor



First Floor

<b>KEY</b>	○ Light fitting	◀ Telephone outlet point	—○ Radiator	B Boiler	CYL Cylinder	wm Washing machine space	td Tumble dryer space
	◻ Electric socket	◁ T.V. aerial socket	— Towel radiator	ST Store	f/f Fridge/freezer space	dw Dishwasher space	◄◄ Dimension location

The company reserves the right to change floor layouts at any time. The computer generated image and floor plans are indicative only, to give a general indication of the proposed development and floor layout. The dimensions are accurate to within + or - 50mm. The exterior finishes may vary.





# The Hurst

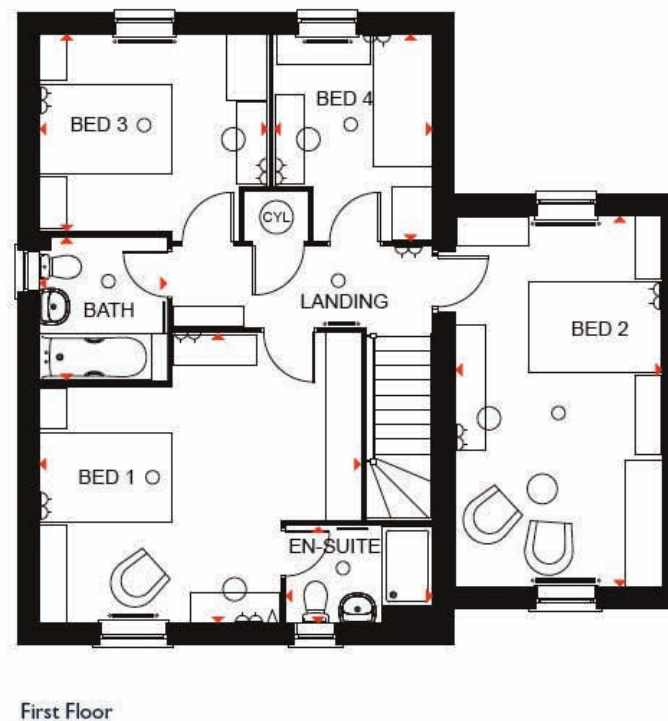
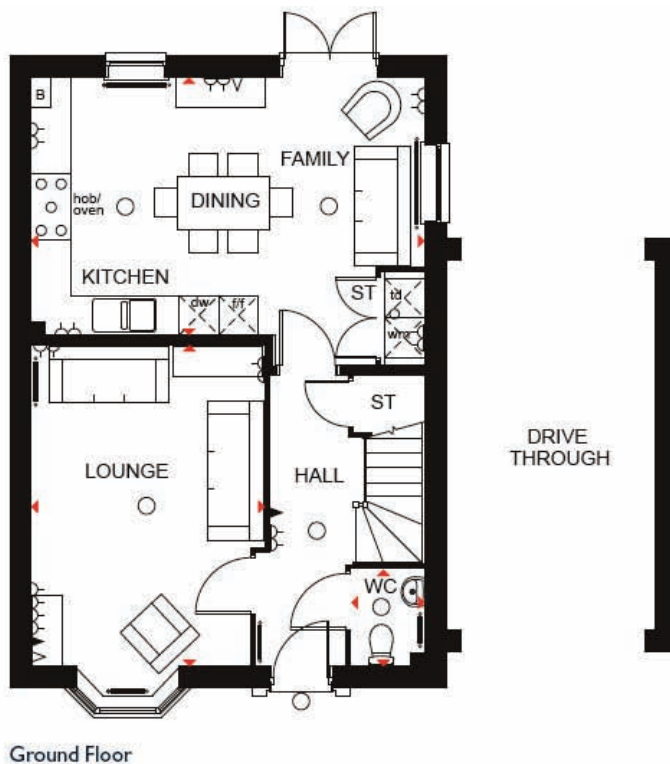
Four bedroom detached home

## Ground Floor

Lounge	3040 x 5390 mm	10'0" x 17'8"
Kitchen / Dining	5390 x 3310 mm	17'8" x 10'10"
WC	1419 x 1025 mm	4'8" x 3'4"

## First Floor

Bed 1	3601 x 3048 mm	11'10" x 10'0"
En-suite	2161 x 1640 mm	7'1" x 5'5"
Bed 2	3165 x 2861 mm	10'5" x 9'5"
Bed 3	3542 x 2136 mm	11'7" x 7'0"
Bath	1700 x 2015 mm	5'7" x 6'7"



- KEY**
- Light fitting
  - ◊ Electric socket
  - ◀ Telephone outlet point
  - ◁ T.V. aerial socket
  - Radiator
  - Towel radiator
  - B Boiler
  - ST Store
  - CYL Cylinder
  - f/f Fridge/freezer space
  - wm Washing machine space
  - dw Dishwasher space
  - td Tumble dryer space
  - ◄► Dimension location



# The Drummond

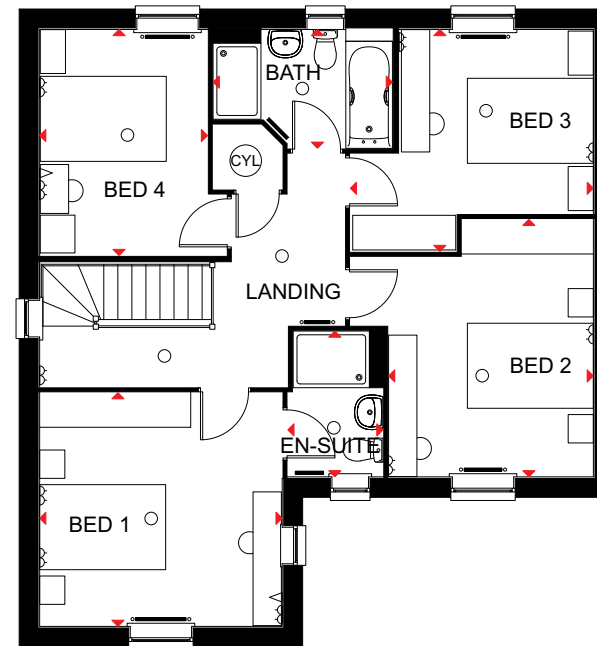
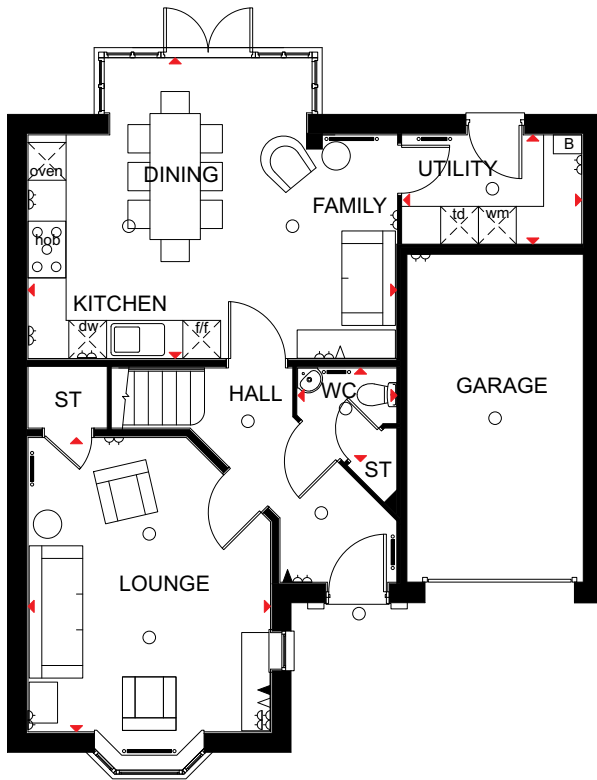
Four bedroom detached home

## Ground Floor

Lounge	3850 x 4671 mm	12'8" x 15'4"
Kitchen/Family/Dining	5855 x 4775 mm	19'3" x 15'8"
Utility	2846 x 1735 mm	9'4" x 5'8"
WC	1490 x 1575 mm	4'11" x 5'2"

## First Floor

Bed 1	3850 x 3711 mm	12'8" x 12'2"
En-suite	1511 x 2315 mm	4'11" x 7'7"
Bed 2	3251 x 4088 mm	10'8" x 13'5"
Bed 3	3858 x 3525 mm	12'8" x 11'7"
Bed 4	3589 x 2665 mm	11'9" x 8'9"
Bath	1886 x 2846 mm	6'2" x 9'4"



<b>KEY</b>	○ Light fitting	◀ Telephone outlet point	— Radiator	B Boiler	f/f Fridge/freezer space	dw Dishwasher space	◄► Dimension location
	◊ Electric socket	◁ T.V. aerial socket	— Towel radiator	ST Store	wm Washing machine space	td Tumble dryer space	



# The Milford

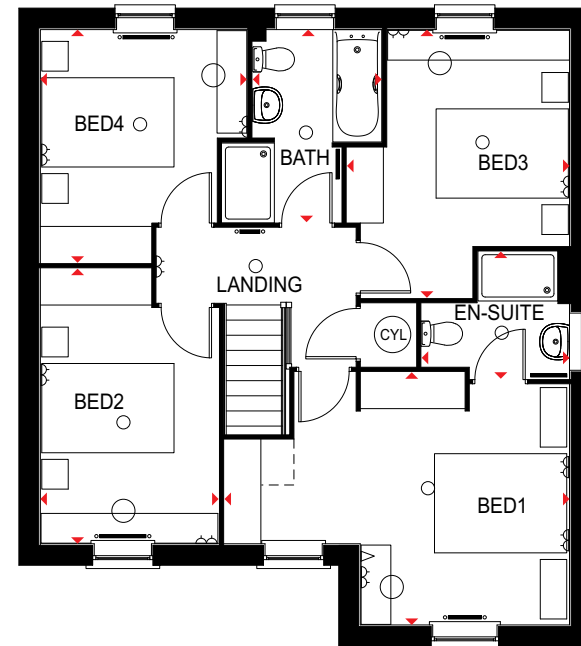
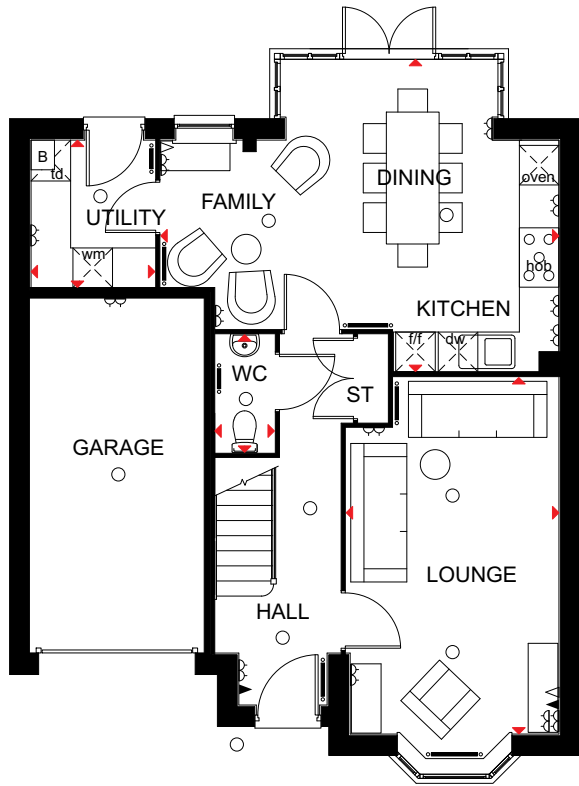
Four bedroom detached home

## Ground Floor

Lounge	5406 x 3226 mm	17'9" x 10'7"
Kitchen/Family/Dining	6037 x 4735 mm	19'10" x 15'6"
Utility	2235 x 1877 mm	7'4" x 6'2"
WC	1786 x 905 mm	5'10" x 3'0"

## First Floor

Bed 1	5218 x 3822 mm	17'1" x 12'6"
En-suite	2235 x 1924 mm	7'4" x 6'4"
Bed 2	4161 x 2696 mm	13'8" x 8'10"
Bed 3	4056 x 3365 mm	13'4" x 11'0"
Bed 4	3527 x 3124 mm	11'7" x 10'3"
Bath	2913 x 1950 mm	9'7" x 6'5"



<b>KEY</b>	○	Light fitting	◀	Telephone outlet point	—	Radiator	B	Boiler	f/f	Fridge/freezer space	dw	Dishwasher space	◀▶	Dimension location
	◊	Electric socket	◁	T.V. aerial socket	—	Towel radiator	ST	Store	wm	Washing machine space	td	Tumble dryer space		



# The Chelworth

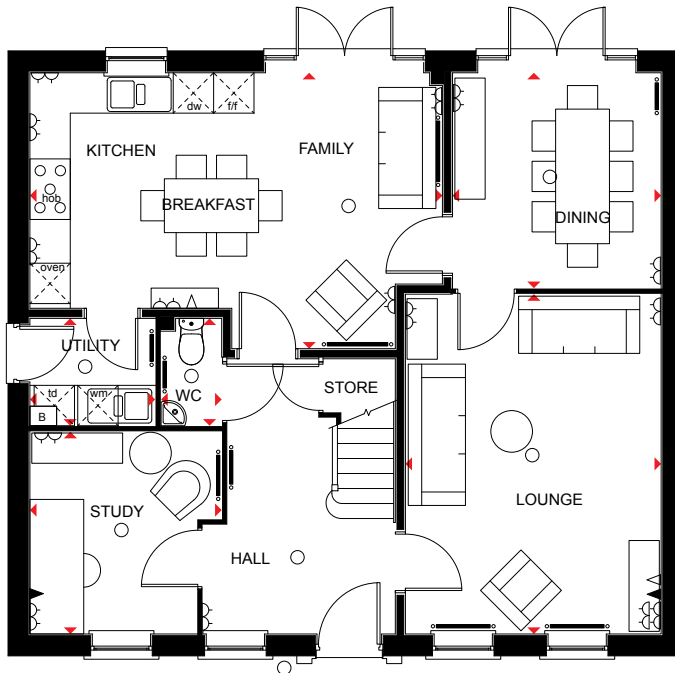
Four bedroom detached home

## Ground Floor

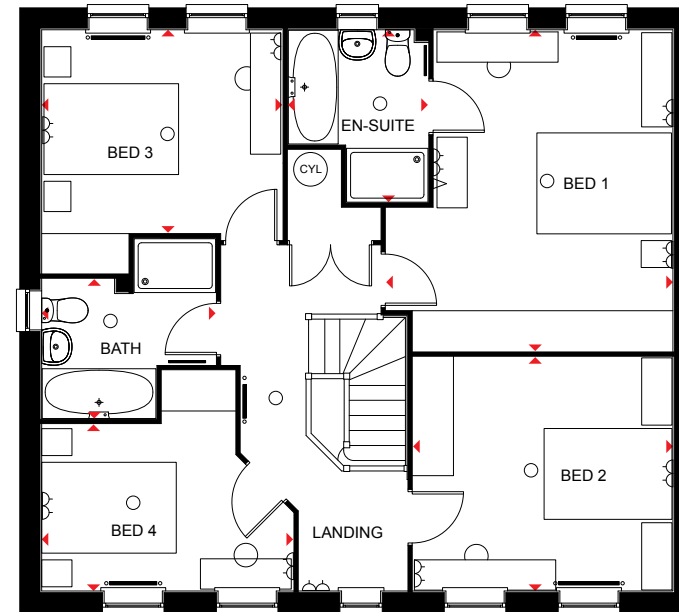
Lounge	5050 x 3800 mm	16'7" x 12'6"
Kitchen/Family/Breakfast	6130 x 4100 mm	20'1" x 13'5"
Dining	3201 x 3100 mm	10'6" x 10'2"
Study	3006 x 2850 mm	9'10" x 9'4"
Utility	1861 x 1595 mm	6'1" x 5'3"
WC	1595 x 900 mm	5'3" x 2'11"

## First Floor

Bed 1	4775 x 4261 mm	15'8" x 14'0"
En-suite	2077 x 2561 mm	6'10" x 8'5"
Bed 2	3476 x 3861 mm	11'5" x 12'7"
Bed 3	3574 x 3016 mm	11'8" x 9'11"
Bed 4	3736 x 2475 mm	12'3" x 8'1"
Bath	2584 x 2071 mm	8'6" x 6'10"



Ground Floor



First Floor

<b>KEY</b>	○ Light fitting	◀ Telephone outlet point	— Radiator	B Boiler	f/f Fridge/freezer space	dw Dishwasher space	◄◄ Dimension location
	◁ Electric socket	◁ T.V. aerial socket	— Towel radiator	CYL Cylinder	w/m Washing machine space	td Tumble dryer space	

Computer generated images are for illustrative purposes only and individual features often vary from one plot to another. Floor plans are indicative only to give a general indication of the proposed development and floor layout. The dimensions are accurate to within + or -50mm. Dimensions should not be used for carpet sizes, appliance spaces or items of furniture. Please ask our Sales Advisers for details of the treatments specified for individual plots. Computer generated images are for general guidance only and are not intended to form part of any contract or warranty. Furniture shown is for illustrative purposes only. Computer generated image and photographs are for general guidance only and are not intended to form part of any contract or warranty.



# The Winstone

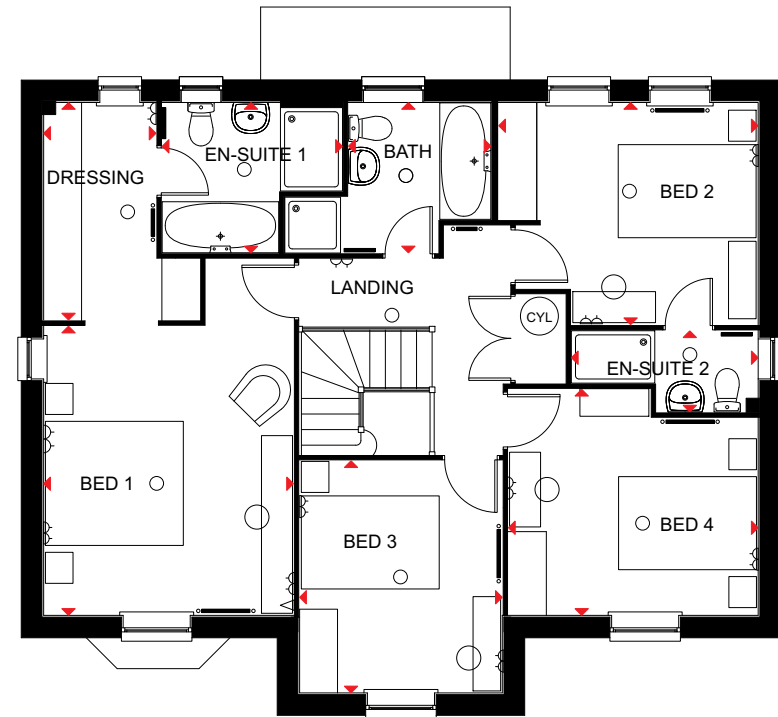
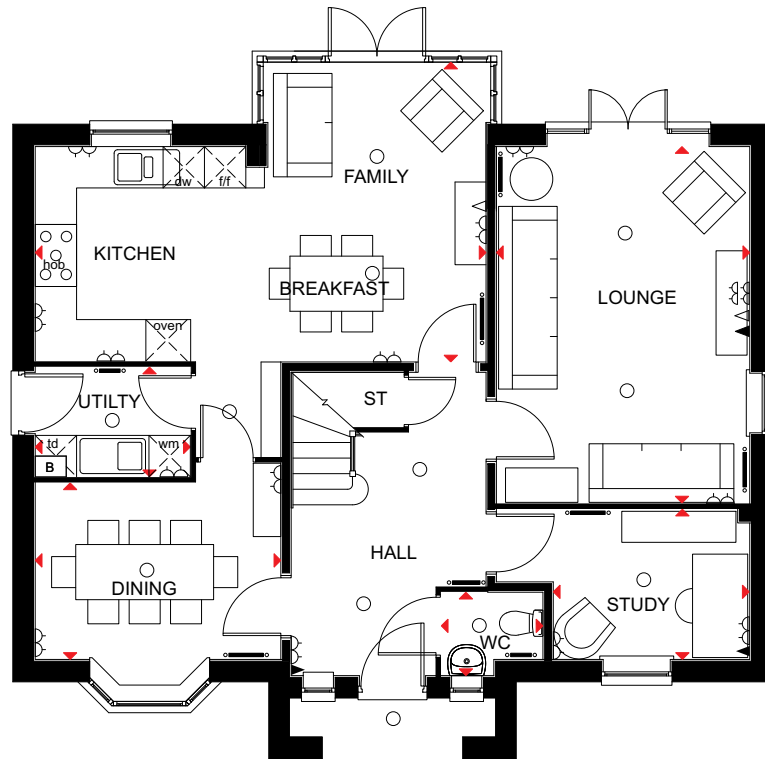
Four bedroom detached home

## Ground Floor

Lounge	5171 x 3675 mm	170" x 121"
Kitchen/Family/Breakfast	6540 x 4350 mm	21'5" x 14'3"
Dining	3563 x 2561 mm	11'8" x 8'5"
Study	2850 x 2180 mm	9'4" x 7'2"
Utility	2250 x 1591 mm	7'5" x 5'3"
WC	1475 x 1210 mm	4'10" x 4'0"

## First Floor

Bed 1	4196 x 3624 mm	13'9" x 11'11"
Dressing	3155 x 1630 mm	10'4" x 5'4"
En-suite 1	2182 x 2615 mm	7'2" x 8'7"
Bed 2	3223 x 3766 mm	10'7" x 12'4"
En-suite 2	1178 x 2710 mm	3'10" x 8'11"
Bed 3	3393 x 2940 mm	11'2" x 9'8"
Bed 4	3623 x 3280 mm	11'11" x 10'9"
Bath	2065 x 2182 mm	6'9" x 7'2"



<b>KEY</b>	○ Light fitting	◀ Telephone outlet point	— Radiator	B Boiler	ff Fridge/freezer space	dw Dishwasher space	◄► Dimension location
	◊ Electric socket	◁ T.V. aerial socket	— Towel radiator	ST Store	wm Washing machine space	td Tumble dryer space	



# The Holden

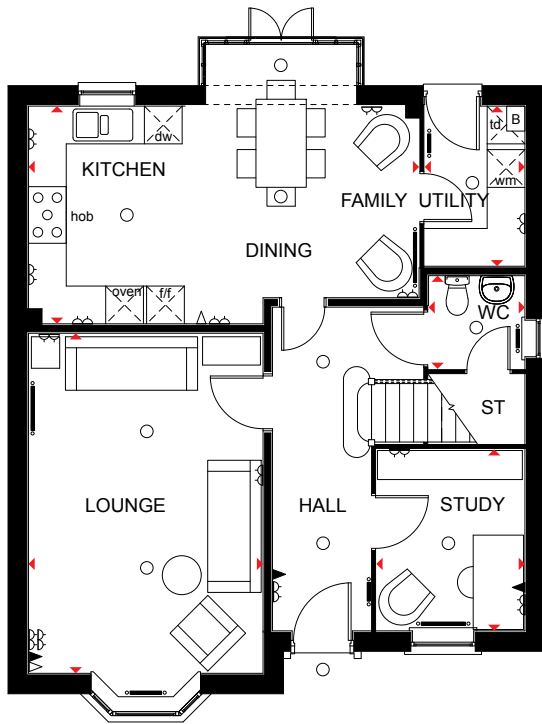
Four bedroom detached home

## Ground Floor

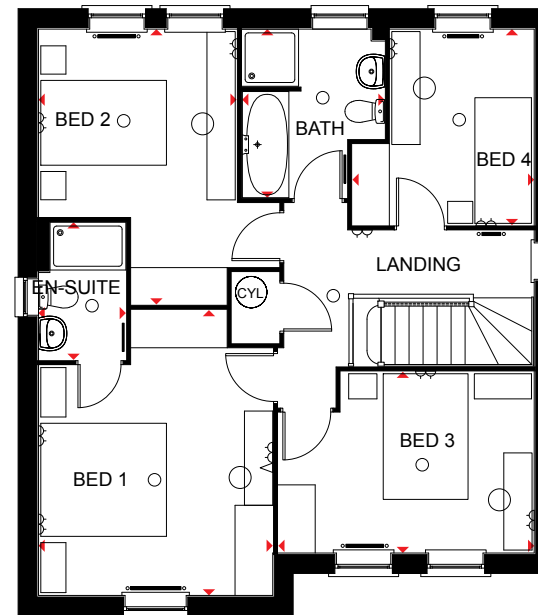
Lounge	3728 x 5405 mm	12'3" x 17'9"
Kitchen/Family/Dining	6208 x 4693mm max	20'4" x 15'4"
Study	2886 x 2361 mm	9'5" x 7'9"
Utility	2545 x 1593 mm	8'4" x 5'3"
WC	1532 x 1481 mm	5'0" x 4'10"

## First Floor

Bed 1	3728 x 4543 mm	12'3" x 14'11"
En-suite	1390 x 2190 mm	4'7" x 7'2"
Bed 2	3153 x 4384 mm	10'4" x 14'5"
Bed 3	2886 x 4073 mm	9'6" x 13'4"
Bed 4	3120 x 2893 mm	10'3" x 9'6"
Bath	2685 x 2266 mm	8'10" x 7'5"



Ground Floor



First Floor

<b>KEY</b>	○	Light fitting	◀	Telephone outlet point	—○—	Radiator	B	Boiler	CYL	Cylinder	wm	Washing machine space	td	Tumble dryer space
	◻	Electric socket	◁	T.V. aerial socket	—■—	Towel radiator	ST	Store	f/f	Fridge/freezer space	dw	Dishwasher space	◄►	Dimension location

Computer generated images are for illustrative purposes only and individual features often vary from one plot to another. Floor plans are indicative only to give a general indication of the proposed development and floor layout. The dimensions are accurate to within + or -50mm. Dimensions should not be used for carpet sizes, appliance spaces or items of furniture. Please ask our Sales Advisors for details of the treatments specified for individual plots. Computer generated images are for general guidance only and are not intended to form part of any contract or warranty. Furniture shown is for illustrative purposes only.



# The Emerson

Five bedroom detached home

## Ground Floor

Lounge	6580 x 3573 mm	21'7" x 11'9"
Kitchen/Family/		
Breakfast	5107 x 4067 mm	16'9" x 13'4"
Utility	1950 x 1531 mm	6'5" x 5'0"
Dining	3052 x 2941 mm	10'0" x 9'8"
WC	1531 x 1013 mm	5'0" x 3'4"

## First Floor

Bed 1	3931 x 3634 mm	12'11" x 11'11"
Dressing	2560 x 1929 mm	8'5" x 6'4"
En-suite	1385 x 2560 mm	4'7" x 8'5"
Bed 3	3054 x 3147 mm	10'0" x 10'4"
Bed 4	3054 x 2744 mm	10'0" x 9'0"
Bath	2173 x 1991 mm	7'2" x 6'6"

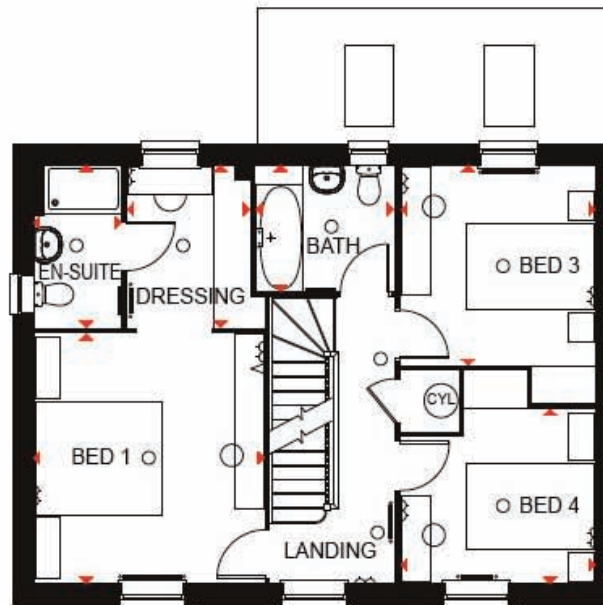
## Second Floor

Bed 2	4402 * x 3561 mm	14'5" * x 11'8"
Bed 5	3634 x 2602 * mm	11'11" x 8'6" *
Shower	2606 x 1470 * mm	8'7" x 4'10" *

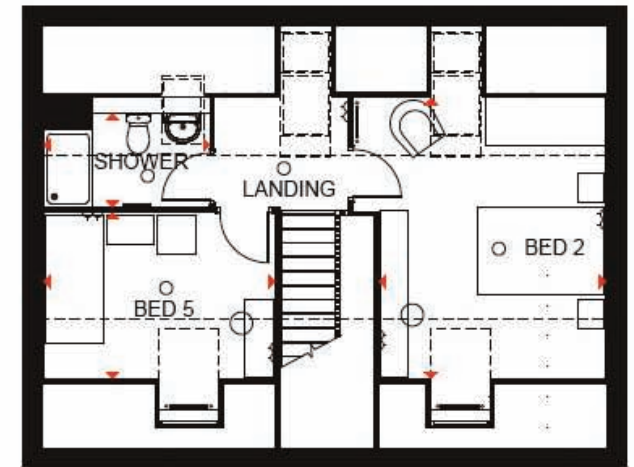
\*Overall floor dimension includes lowered ceiling areas



Ground Floor



First Floor



Second Floor

- KEY**
- Light fitting
  - ◁ Telephone outlet point
  - ▬ Radiator
  - B Boiler
  - CYL Cylinder
  - wm Washing machine space
  - td Tumble dryer space
  - ◁ Electric socket
  - ◁ T.V. aerial socket
  - ▬ Towel radiator
  - ST Store
  - f/f Fridge/freezer space
  - dw Dishwasher space
  - ◁▷ Dimension location



# The Moorecroft

Five bedroom detached home

## Ground Floor

Lounge	5490 x 4290 mm	18'0" x 14'1"
Kitchen/Dining	7150 x 4100 mm	23'5" x 13'5"
Study	2840 x 2861 mm	9'4" x 9'5"
Utility	2425 x 1750 mm	7'11" x 5'9"
WC	1775 x 998 mm	5'10" x 3'3"

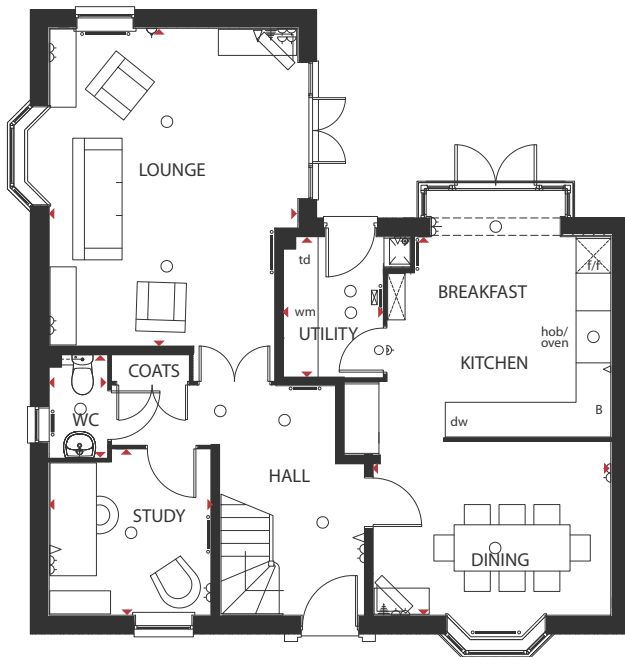
## First Floor

Bed 1	4290 x 3486 mm	14'1" x 11'5"
En-suite 1	2225 x 2525 mm	7'4" x 8'3"
Bed 3	2879 x 3929 mm	9'5" x 12'11"
Bed 4	3773 x 2711 mm	12'5" x 8'11"
Bed 5	3740 x 2798 mm	12'3" x 9'2"
Bath	2698 x 2124 mm	8'10" x 7'0"

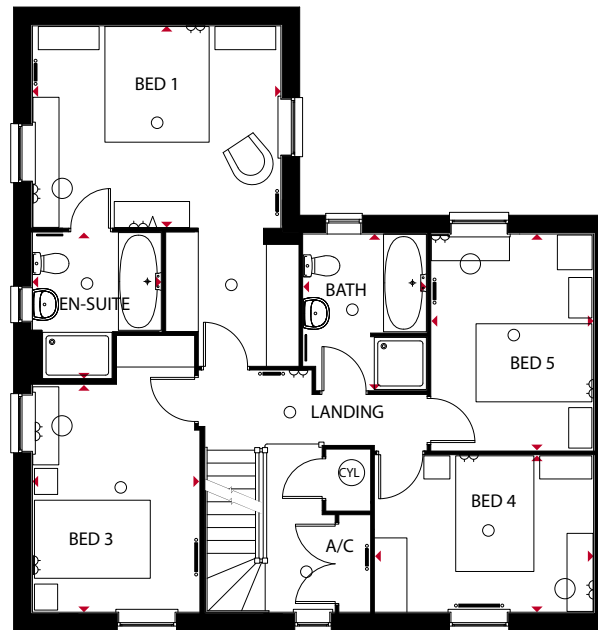
## Second Floor

Bed 2	5437 x 4790* mm	17'10" x 15'9"*
Den	2940* x 4525 mm	9'8"* x 14'10"
En-suite 2	1437* x 2289 mm	4'9"* x 7'6"

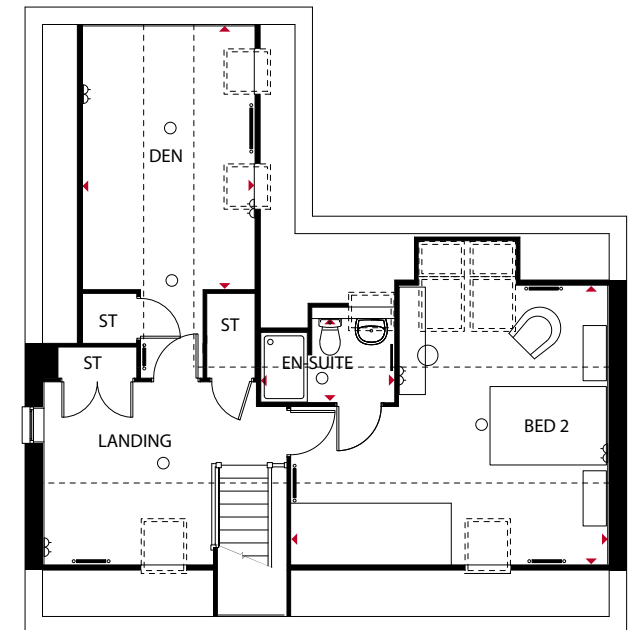
\*Overall floor dimension includes lowered ceiling areas



Ground Floor



First Floor



Second Floor

<b>KEY</b>	○ Light fitting	◀ Telephone outlet point	— Radiator	B Boiler	CYL Cylinder	wm Washing machine space	td Tumble dryer space
	◊ Electric socket	◁ T.V. aerial socket	— Towel radiator	ST Store	fff Fridge/freezer space	dw Dishwasher space	◄► Dimension location

The company reserves the right to change floor layouts at any time. The computer generated image and floor plans are indicative only, to give a general indication of the proposed development and floor layout. The dimensions are accurate to within + or - 50mm. The exterior finishes may vary.



## Sandlands

Sandlands Way, Forest Town,  
Mansfield NG19 0LY

Telephone: 0844 811 55 44

Sandlands is a fantastic development of 2, 3, 4 and 5  
bedroom homes



Visit [www.dwh.co.uk](http://www.dwh.co.uk) or call 0844 811 55 44  
or come and visit us at our showhome 8am to 9pm daily



Scan this barcode with  
your smartphone for full  
development details or  
text 'DWH120' to 84840

This brochure and all the information detailed therein does not and will not constitute any part of any offer or contract, or be a representation inducing such a contract. This brochure and all photographs, illustrations, plans and sizes are indicative only to give a general indication of the proposed development and floor layouts. We aim to ensure that the room dimensions printed are correct to either 75mm (3") more or less than the actual dimension. David Wilson Homes operates a policy of continuous product development, therefore some features, specification and elevational treatments may vary at the discretion of David Wilson Homes.

David Wilson Homes reserves the right to alter any part of the development. None of the statements and information contained in this brochure are to be relied upon as statements or representations of fact, and any intending purchaser must satisfy him/herself by inspection or otherwise as to the correctness of any statement. Any intending purchaser is advised to contact David Wilson Homes to ascertain the availability of any type of property.



*Where quality lives*

**David Wilson Homes**