

WATERSIDE

New Atlas Wharf, 3 Arnhem Place
London, E14

HAMPTONS
INTERNATIONAL

Beyond your expectations

Exceptional penthouse for sale in New Atlas Wharf E14. EPC:D

Share of Freehold | 2 Bedrooms | 1 Reception Room | 2 Bathrooms | Flat | Top Floor | Roof Terrace | Private Parking

Asking Price £2,000,000 Share of Freehold

Description

Spectacular penthouse positioned on this sought after stretch of the river Thames with two underground parking spaces. The property is finished to an exceptional standard throughout and benefits include bespoke fitted bar, cave themed cinema, inset flat screen TVs and a 360 degree roof terrace. The apartment offers panoramic views across London and Canary Wharf.

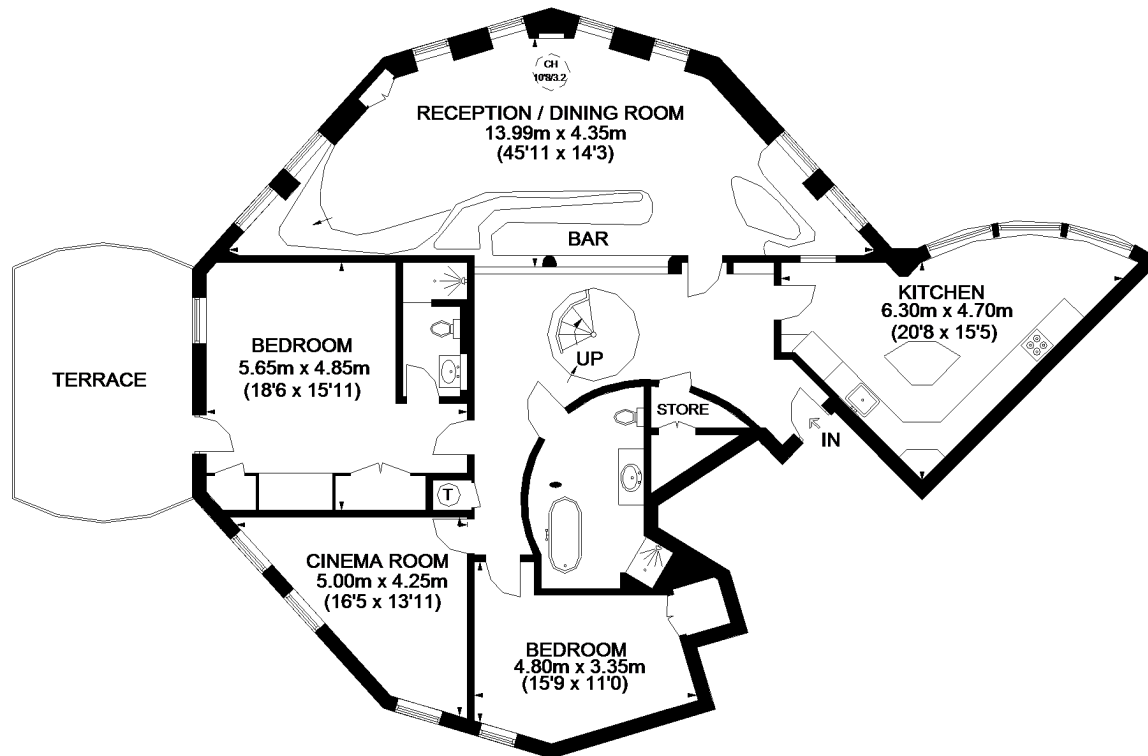
New Atlas Wharf is well located for transport. DLR at South Quay and Jubilee Line at Canary Wharf are both within 1 kilometre.

Share of Freehold
Service Charge: est. £3,500 pa



Energy Efficiency Rating		
	Current	Potential
Very energy efficient - lower running costs		
(92+) A		
(81-91) B		
(69-80) C		76
(55-68) D	66	
(39-54) E		
(21-38) F		
(1-20) G		
Not energy efficient - higher running costs		
England, Scotland & Wales	EU Directive 2002/91/EC	

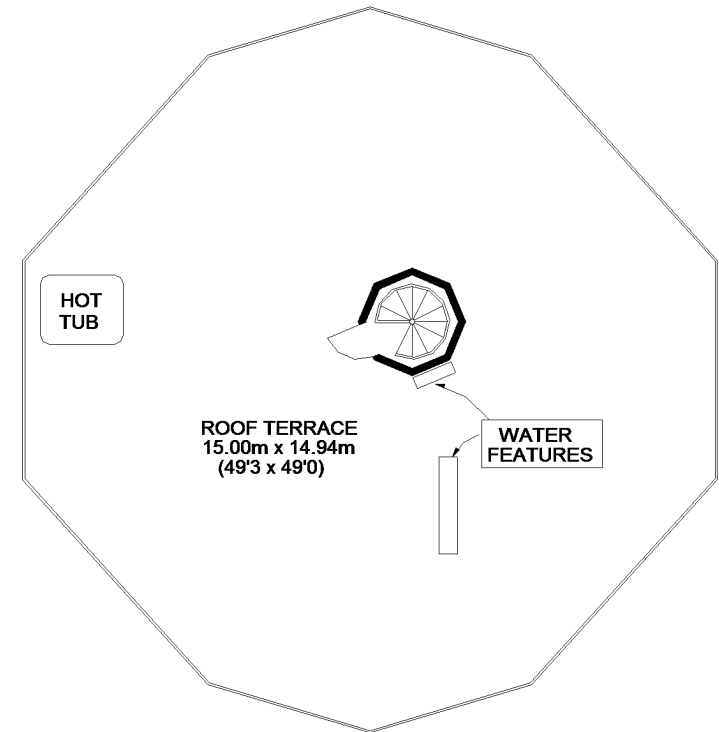
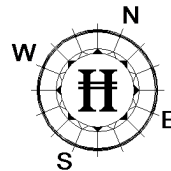
NEW ATLAS WHARF



TENTH FLOOR

APPROXIMATE GROSS INTERNAL AREA
 TENTH FLOOR = 1855 SQ. FT. (172.3 SQ. M.)
 ELEVENTH FLOOR = 30 SQ. FT. (2.8 SQ. M.)
 TOTAL = 1885 SQ. FT. (175.1 SQ. M.)

○ = CEILING HEIGHT



ELEVENTH FLOOR (ROOF TERRACE)

This plan is for layout guidance only. Not drawn to scale unless stated. Windows and door openings are approximate. Whilst every care is taken in the preparation of this plan, please check all dimensions, shapes and compass bearings before making any decisions reliant upon them. Please be advised that Hamptons International / our agents have not seen or reviewed any building regulations or planning permission in relation to works carried out to the property (ID330328)

FOR CLARIFICATION We wish to inform prospective purchasers that we have prepared these sales particulars as a general guide. We have not carried out a detailed survey, nor tested the services, appliances and specific fittings. Room sizes are approximate and rounded: they are taken between internal wall surfaces and therefore include cupboards/shelves, etc. Accordingly, they should not be relied upon for carpets and furnishings. Formal notice is also given that all fixtures and fittings, carpeting, curtains/blinds and kitchen equipment, whether fitted or not, are deemed removable by the vendor unless specifically itemised within these particulars.

