



Coleridge Gardens, SW10

£8,500,000

Dexters



Coleridge Gardens, London, SW10

A truly exceptional six bedroom penthouse apartment located in this prestigious Chelsea development.

This exceptional apartment has undergone an extensive refurbishment programme by the current owners and offers unparalleled living/entertaining space with the additional benefit of four fabulous terraces, and underground parking for three cars. All six bedrooms offer en-suite facilities and the main reception room is flooded with natural light and has high ceilings throughout.

This gated development offers residents 24 hour security, porter, parking and leisure facilities with the added benefit of manicured gardens.

Kings Chelsea is located in between the Kings Road and Fulham Road with all the shops, restaurants and transport links close by.

Features

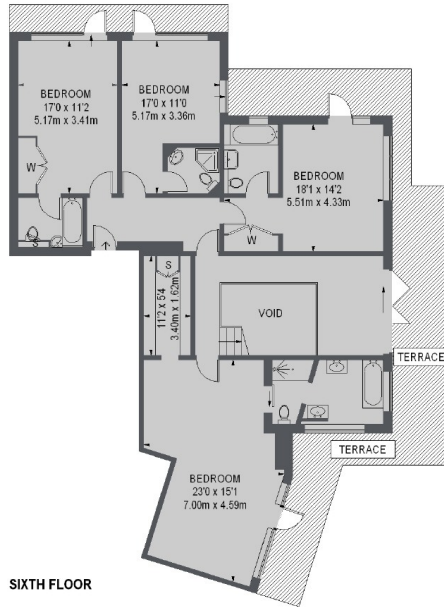
- Six Bedrooms
- Kitchen/Breakfast Room
- Reception Room
- Separate Study
- Wraparound Balconies
- Three Parking Spaces



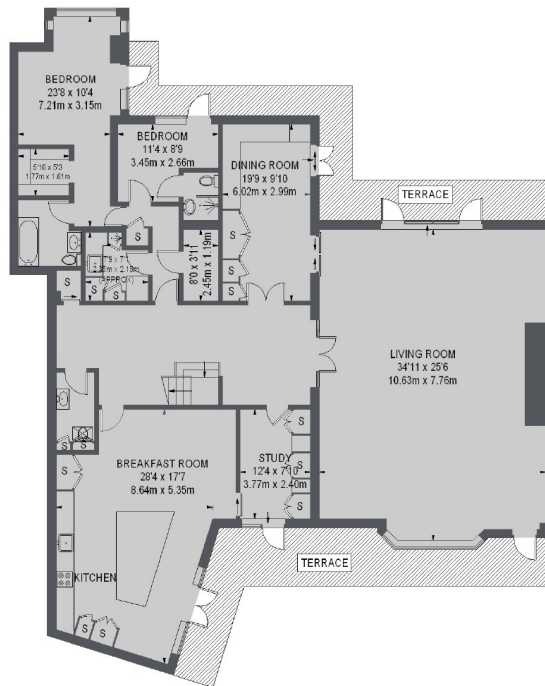




Coleridge Gardens, London, SW10



SIXTH FLOOR



FIFTH FLOOR

TOTAL APPROX. FLOOR AREA 4054 SQ. FT. (. 376.6 SQ. M.)
(EXCLUDING VOID)



Chelsea
14 Culford Gardens, Chelsea,
London, SW3 2ST

Sales
020 7590 9510

Energy Rating: C. We aim to make our particulars both accurate and reliable. However they are not guaranteed; nor do they form part of an offer or contract. If you require clarification on any points then please contact us, especially if you're traveling some distance to view. Please note that appliances and heating systems have not been tested and therefore no warranties can be given as to their good working order.



dexters.co.uk