

# EASY CONNECTIONS

## BY ROAD

Chatteris is close to many of East Anglia's main towns. Cambridge, Newmarket and Peterborough are an easy drive. The A1 is easy to get to, linking you with the North, while the M11 connects you with London and the M25.

## BY RAIL

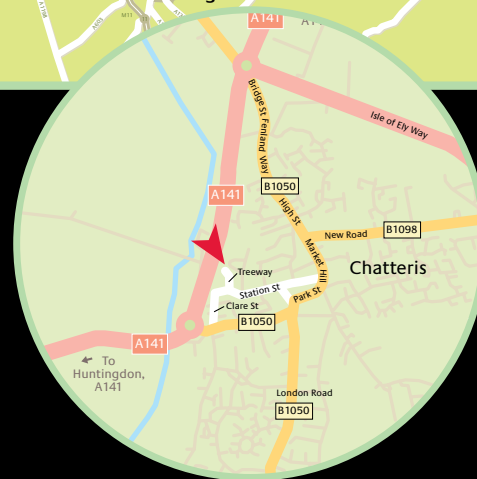
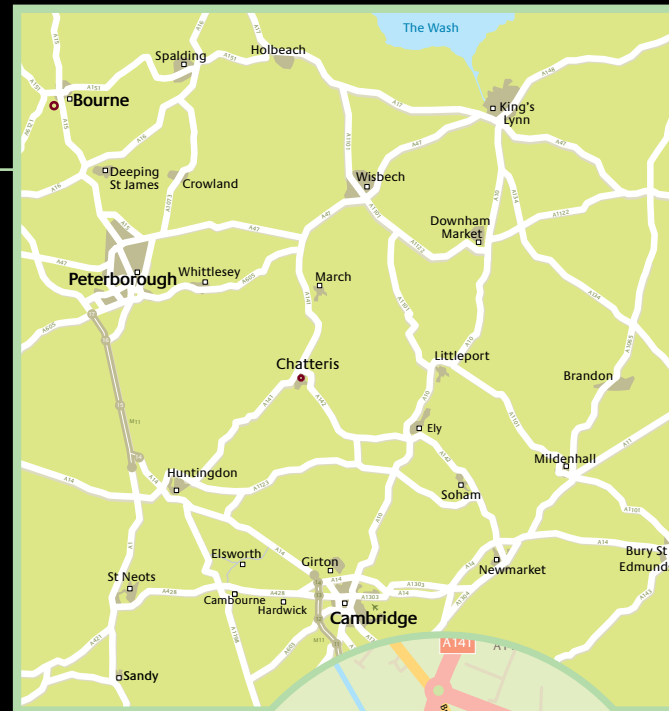
Nearby stations at Ely, Huntingdon, Cambridge and March link Chatteris with the national rail network. Huntingdon offers a regular service to London King's Cross and connects with the East Coast line at Peterborough. Ely links you with Kings Lynn and Ipswich on the Fen Line and Cambridge offers fast services to London Liverpool Street.

## BY AIR

From Ely Station there is a direct rail link with Stansted Airport, while the M11 and M25 provide a fast route to both Heathrow and Gatwick airports.

## BY FERRY

Harwich is your local port for fast, efficient car ferry links with Germany and Holland.



For further details please call Karen Barber on:

**01279 714763**

[karen.barber@circle.org.uk](mailto:karen.barber@circle.org.uk)

**07824 409 705**  
[www.circleliving.org.uk](http://www.circleliving.org.uk)



To register your interest please visit: [www.orbit.org.uk](http://www.orbit.org.uk)



**TREETWAYS**  
CHATTERIS • CAMBRIDGESHIRE



2 AND 3 BED HOUSES AND 2 BED APARTMENTS FOR SALE ON A PART BUY, PART RENT SHARED OWNERSHIP BASIS IN A THRIVING FENLAND TOWN



# SITE PLAN

- 2 Bedroom Apartment
- 2 Bedroom House
- 3 Bedroom House



## A VERY SPECIAL LOCATION

Small enough to feel like a country village yet large enough to offer full amenities, Chatteris is a great place to settle. There's a cricket team, parish church and annual pageant. The Christmas lights have been featured on TV and the village flowers win prizes. There are a variety of light industries, handy shops and easy connections to the main towns of Cambridgeshire.

Now Roddons Housing offers the opportunity to be part of this vibrant community. Treeways is a development of 2 and 3 bedroom houses and 2 bedroom apartments available for shared ownership.

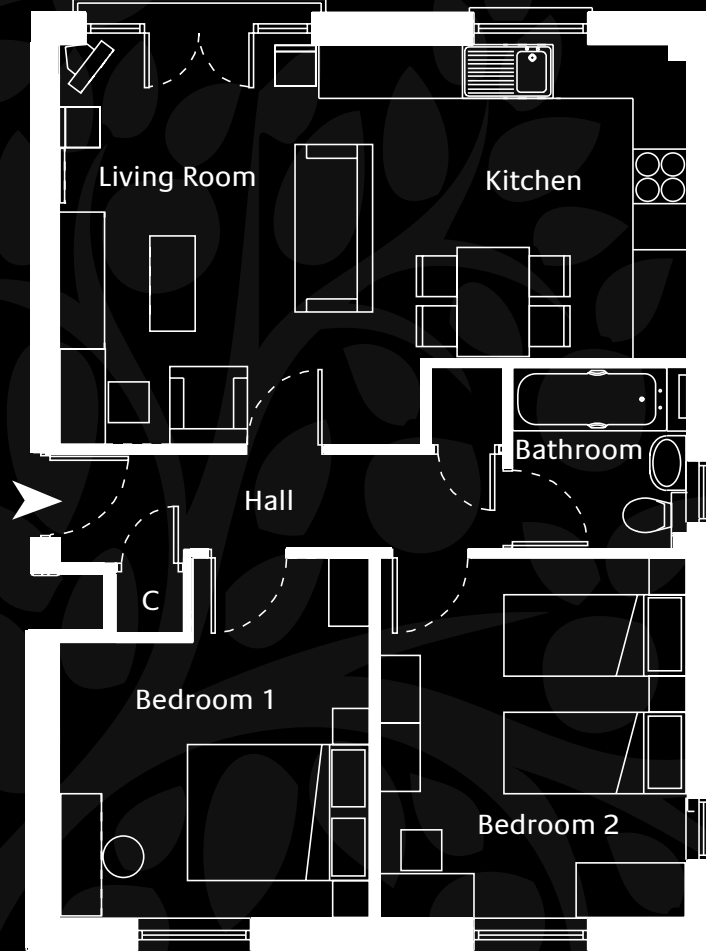


## EXCELLENT SPECIFICATION

THIS IS AFFORDABLE HOUSING WITHOUT COMPROMISE. ALL HOMES BENEFIT FROM:

- Fully fitted kitchen with electric oven, hob and extractor
- White bathroom sanitaryware, chrome towel rails and ceramic tiles
- Gas central heating with condenser boiler
- Downlighters to kitchen, cloakroom, bathroom and bedrooms
- Carpet throughout except bathroom
- Telephone points

# TWO BEDROOM APARTMENTS



SECOND FLOOR - PLOT 25  
 FIRST FLOOR - PLOT 23  
 GROUND FLOOR - PLOT 21  
 67 sq.m. 721 sq.ft.

Living / Dining / Kitchen	6.93m x 4.42m 22' 9" x 14' 6"
Bedroom 1	3.99m x 3.45m 13' 1" x 11' 4"
Bedroom 2	3.99m x 3.42m 13' 1" x 11' 3"

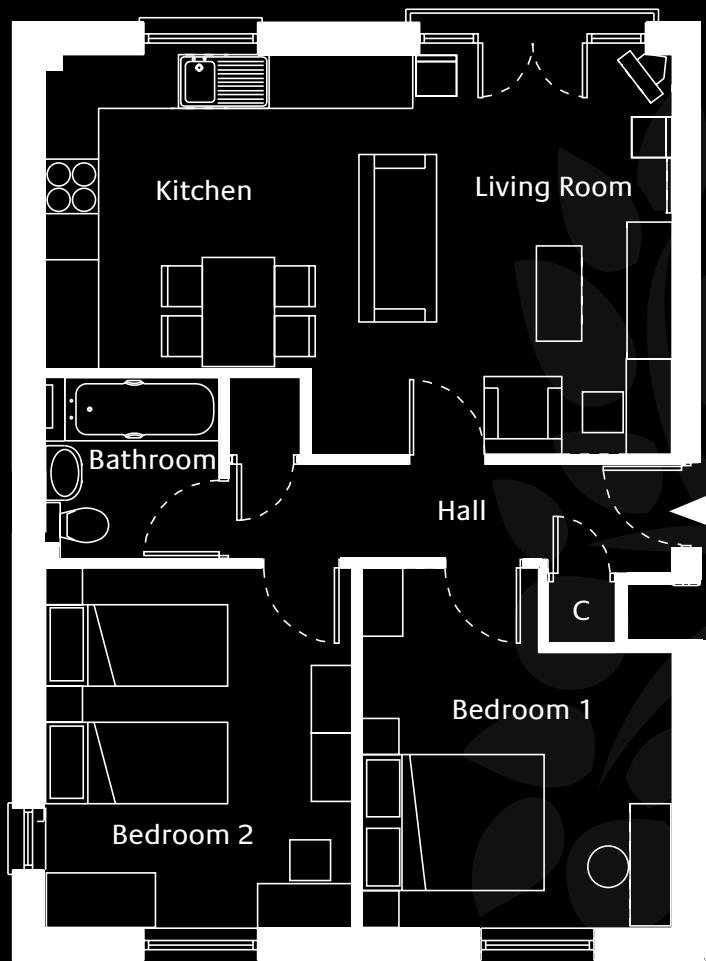


FRONT ELEVATION



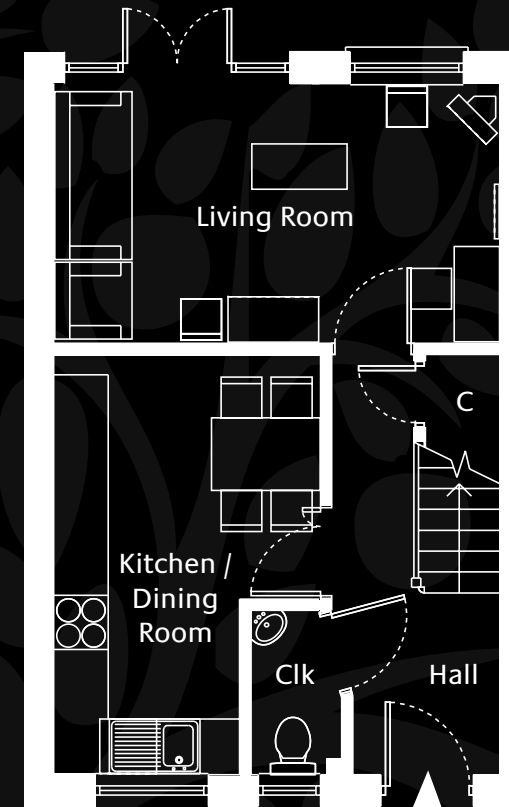
# TWO BEDROOM APARTMENTS

# TWO BEDROOM HOUSES

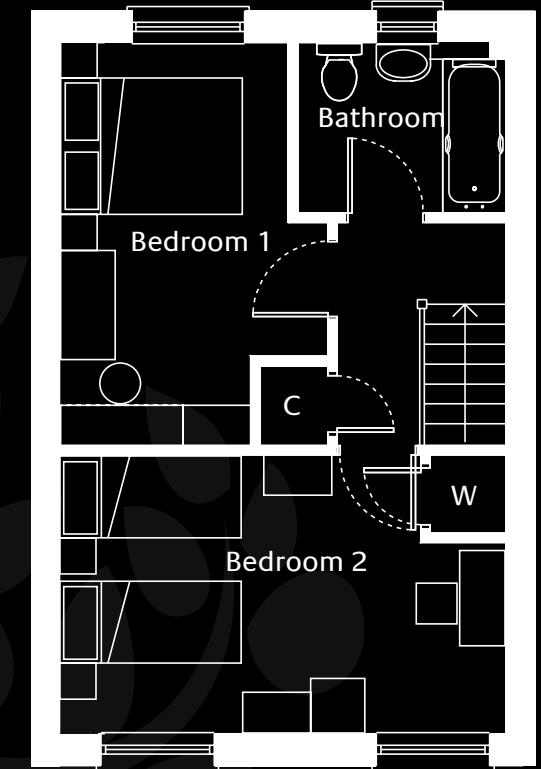


SECOND FLOOR - PLOT 24  
 FIRST FLOOR - PLOT 22  
 GROUND FLOOR - PLOT 20  
 67 sq.m. 721 sq.ft.

Living / Dining / Kitchen	6.93m x 4.42m 22' 9" x 14' 6"
Bedroom 1	3.99m x 3.45m 13' 1" x 11' 4"
Bedroom 2	3.99m x 3.42m 13' 1" x 11' 3"



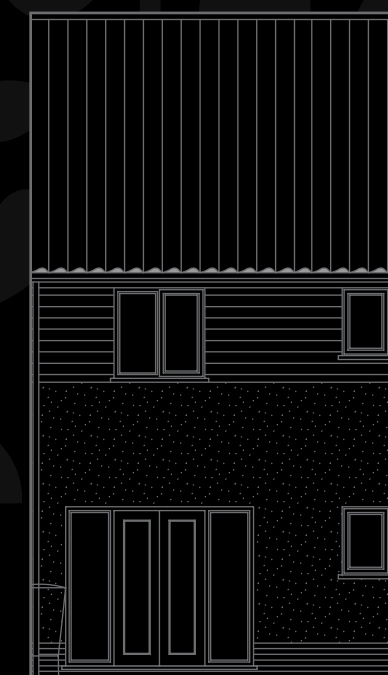
GROUND FLOOR



FIRST FLOOR



FRONT ELEVATION



REAR ELEVATION

TWO BEDROOM HOUSES  
 PLOTS 46, 47\*, 53 & 54\*  
 75 sq.m. 807 sq.ft.

Living Room	4.64m x 2.97m 15' 3" x 9' 9"
Kitchen / Dining room	4.62m x 2.87m 15' 2" x 9' 5"
Bedroom 1	4.95m x 3.09m 16' 3" x 10' 2"
Bedroom 2	4.45m x 2.98m 14' 7" x 9' 10"

\* Houses 47 & 54 are handed to the house drawn



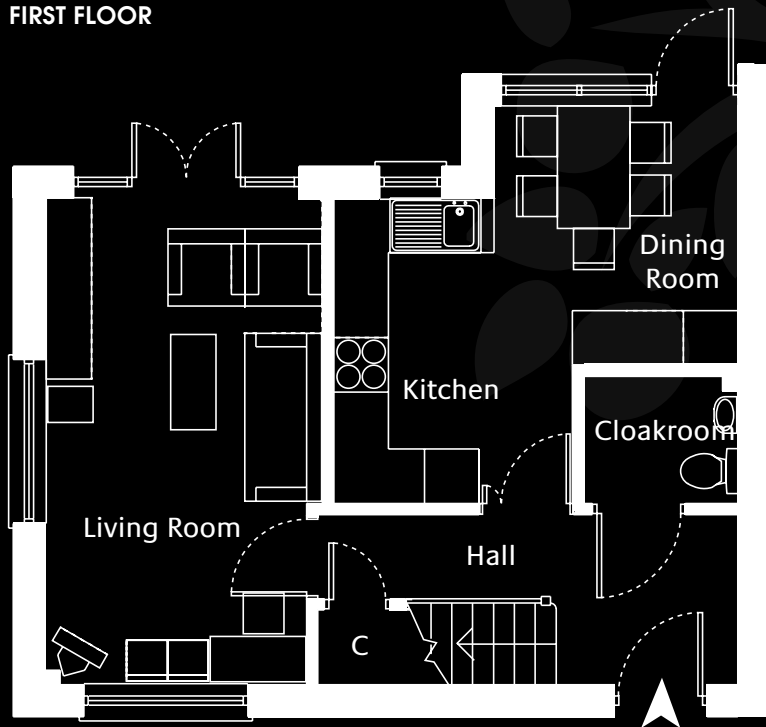
FRONT ELEVATION

# THREE BEDROOM HOUSE

# THREE BEDROOM HOUSES



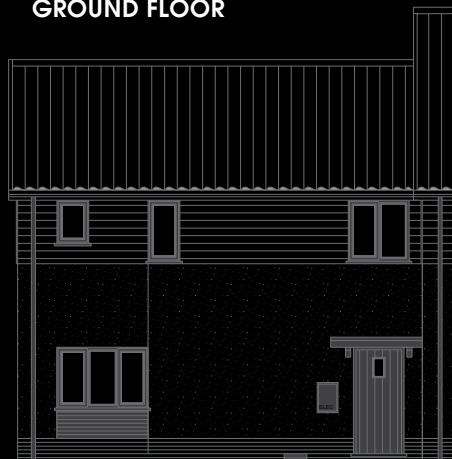
FIRST FLOOR



GROUND FLOOR

## PLOT 52 84.5 sq.m. 909 sq.ft.

Living Room	5.36m x 3.07m 17' 7" x 10' 1"
Dining room	2.87m x 2.69m 9' 5" x 8' 10"
Kitchen	3.38m x 2.65m 11' 1" x 8' 8"
Bedroom 1	3.12m x 3.05m 10' 3" x 10' 0"
Bedroom 2	4.59m x 3.43m 15' 1" x 11' 3"
Bedroom 3	2.82m x 2.36m 9' 3" x 7' 9"



FRONT ELEVATION



REAR ELEVATION



GROUND FLOOR

## PLOT 55 84.5 sq.m. 909 sq.ft.

Living Room	5.37m x 3.05m 17' 7" x 10' 0"
Dining room	2.80m x 2.66m 9' 2" x 8' 9"
Kitchen	3.73m x 2.63m 12' 3" x 8' 8"
Bedroom 1	3.13m x 3.04m 10' 3" x 10' 0"
Bedroom 2	4.50m x 3.41m 14' 9" x 11' 2"
Bedroom 3	2.81m x 2.30m 9' 3" x 7' 7"



FIRST FLOOR



FRONT ELEVATION



REAR ELEVATION