



C



A



M



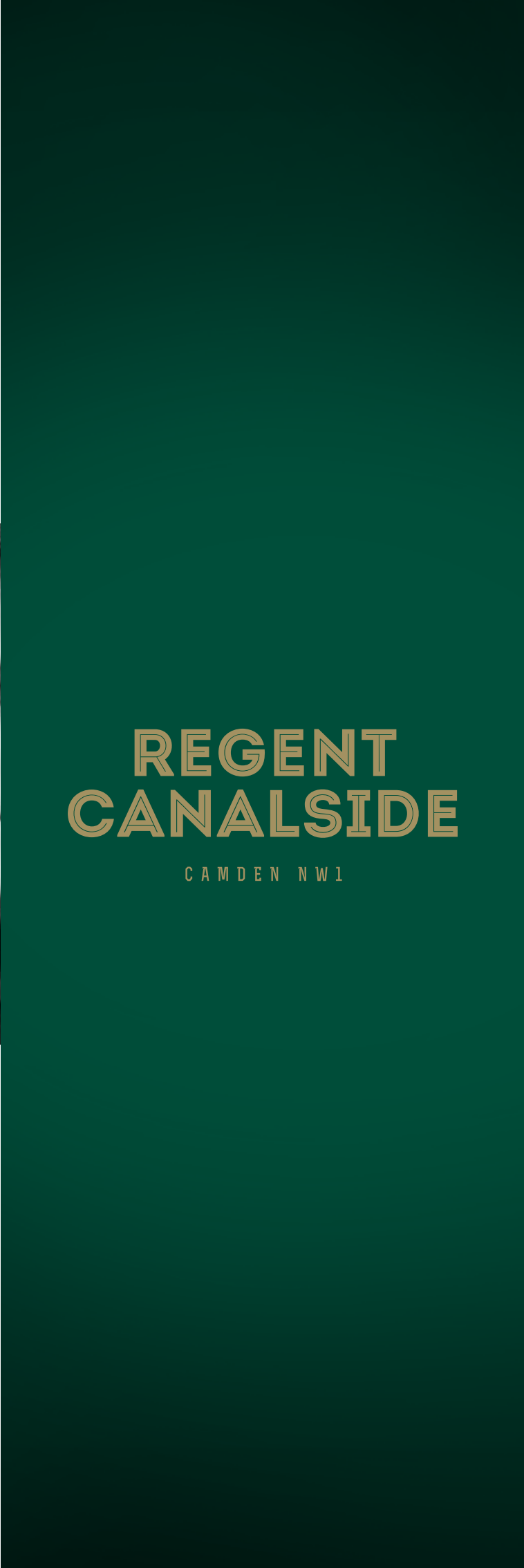
D



E



N



REGENT  
CANALSIDE

CAMDEN NW1

REGENT  
CANALSIDE

CAMDEN NW1

**A LUXURY COLLECTION  
OF 52 APARTMENTS  
AND 2 TOWNHOUSES**

“IT IS LIFE, I THINK,  
TO WATCH THE WATER.  
A MAN CAN LEARN  
SO MANY THINGS”

NICOLAS SPARKS



# A LUXURY COLLECTION OF LONDON'S FINEST APARTMENTS

Welcome to Regent Canalside - a collection of 52 aspirational apartments and 2 elegant townhouses, enviably located in the heart of London's coolest postcode. Famous around the world, Camden Town is a vibrant and edgy quarter of London with an eclectic mix of culture, food, fashion and music.



REGENT CANALSIDE  
IS URBAN LIVING AT  
THE HIGHEST LEVEL





## SURROUNDED BY LUXURY

The many floor to ceiling windows of Regent Canalside ensure maximum natural light floods in to these modern and luxurious apartments, many with generous balconies from which to take in the sights that waterside living has to offer.

Beautiful wood flooring, and high specification kitchens and bathrooms all add to the crisp, clean finish of these beautifully designed spaces.



EACH RESIDENCE  
IS FINISHED TO AN  
INCREDIBLY HIGH  
SPECIFICATION



# THE UNIQUE PERSPECTIVE OF CANALSIDE LIVING

Living at Regent Canalside opens up endless ways to live the London lifestyle to the full, jogging or walking along this peaceful stretch of water is a luxury many Londoners dream of. Weekends can be spent exploring the variety of locations reached from the canal.

If green spaces are more your style of escapism, Regent Canalside is just a short walk from two of London's most beautiful parks; Regent's Park and Hyde Park. A stroll in the park, a picnic under the shade of a tree or a browse around The Serpentine, may just help you put the buzz of the week behind you.

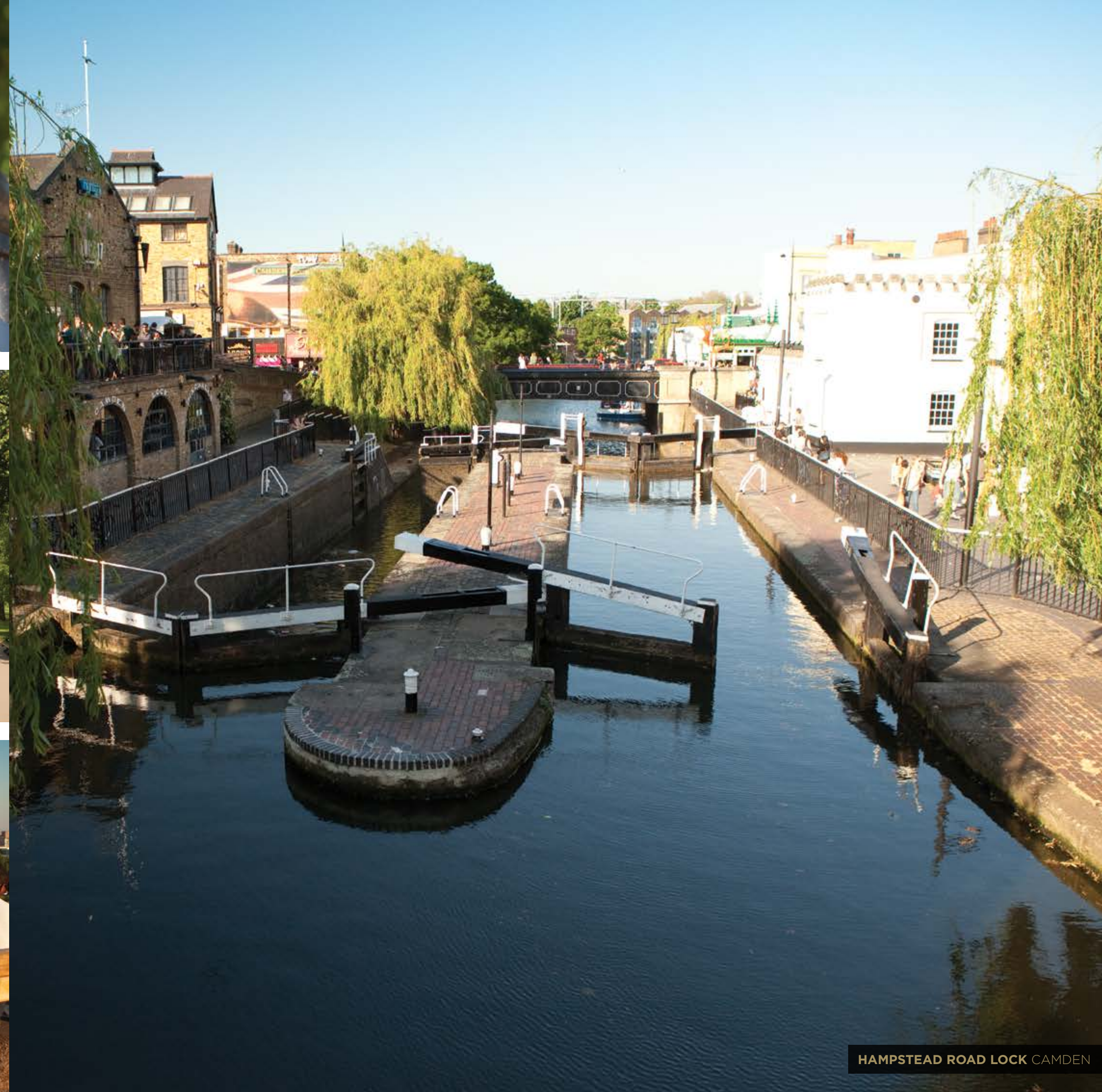
Living next to the canal offers variety and choice, but with so much to do in Camden itself why leave?



REGENT'S PARK



PRIMROSE HILL



HAMPSTEAD ROAD LOCK CAMDEN



## AN INSPIRING CHOICE OF RESTAURANTS BARS AND CAFES

As a resident of Regent Canalside you will have an endless choice of places to eat and drink. Camden Market itself, just a few short minutes' walk away along the canal, offers streetfood from all over the world - a foodie trend very fashionable in London right now.

Camden is famous for its bars and music culture the world over, whether it be having drinks with friends at the Lockside Lounge or catching a gig at local celebrity haunt, The Lock Tavern.

Still wanting even more choice? No problem. Neighbouring Islington offers a dizzying array of bars, restaurants and cafes, with its European inspired wide pavements to allow for al fresco dining and drinking.

WITH SO MANY PLACES TO EAT AND DRINK, YOU'LL BE SPOILT FOR CHOICE





# ENDLESS SHOPPING ON YOUR DOORSTEP

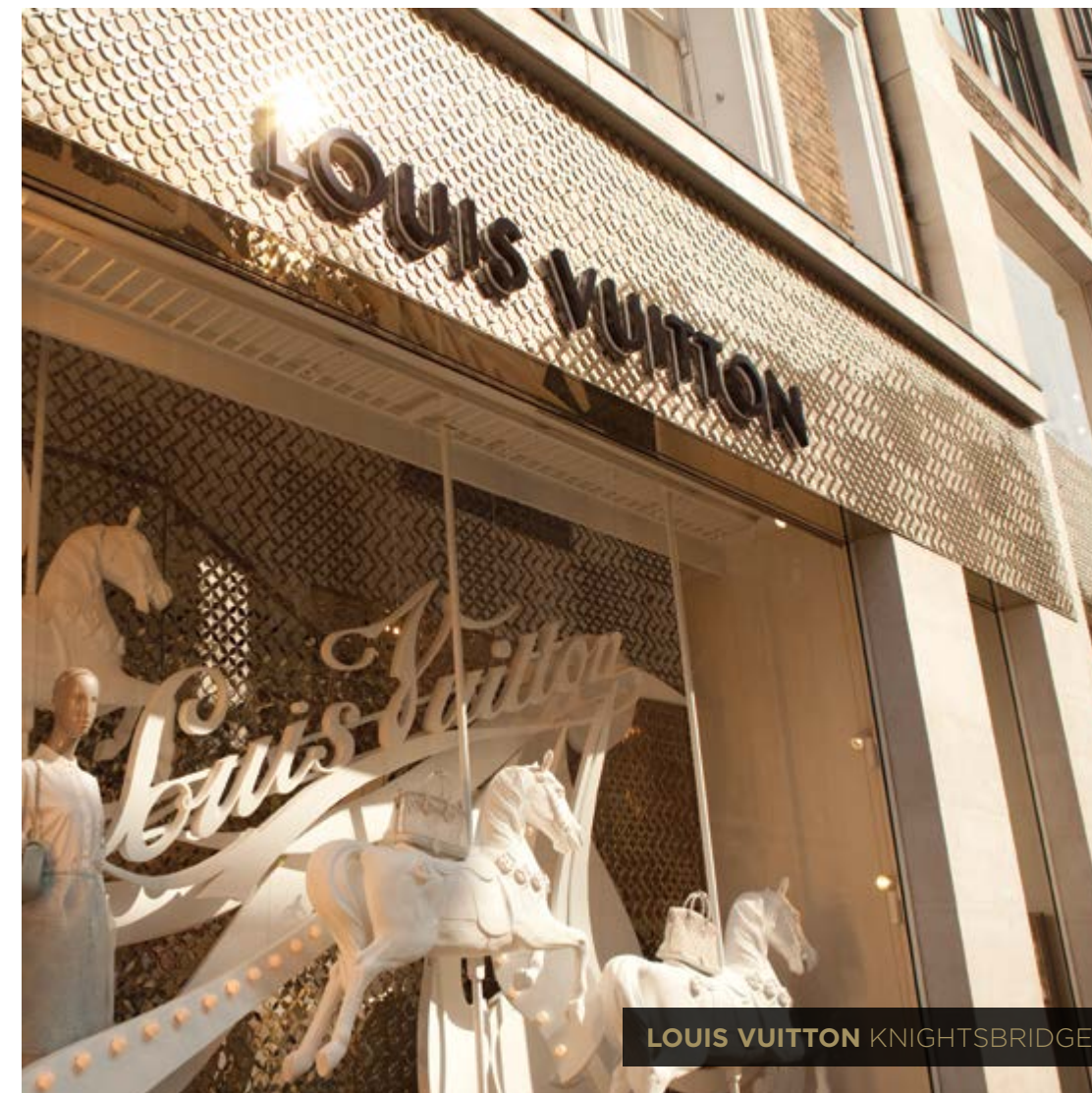
Camden Market is world famous, and it is no surprise why. Its colourful and lively atmosphere is infectious, and when it comes to shopping here, the choice on offer is overwhelming.

Recent investment into this vibrant area to bring the legendary market into the 21st century has ensured Camden Town's reputation as an essential shopping and cultural destination remains unrivaled.

Clothes, handmade crafts and food and drink are all available, and you will enjoy losing yourself in the warren of eclectic stalls.

For a more luxurious, boutique shopping experience, just a few minutes away is Upper Street, famous for its independent stores such as Cop Copine and Twentytwentyone.

IMMERSE YOURSELF  
IN A WORLD  
CLASS SHOPPING  
EXPERIENCE

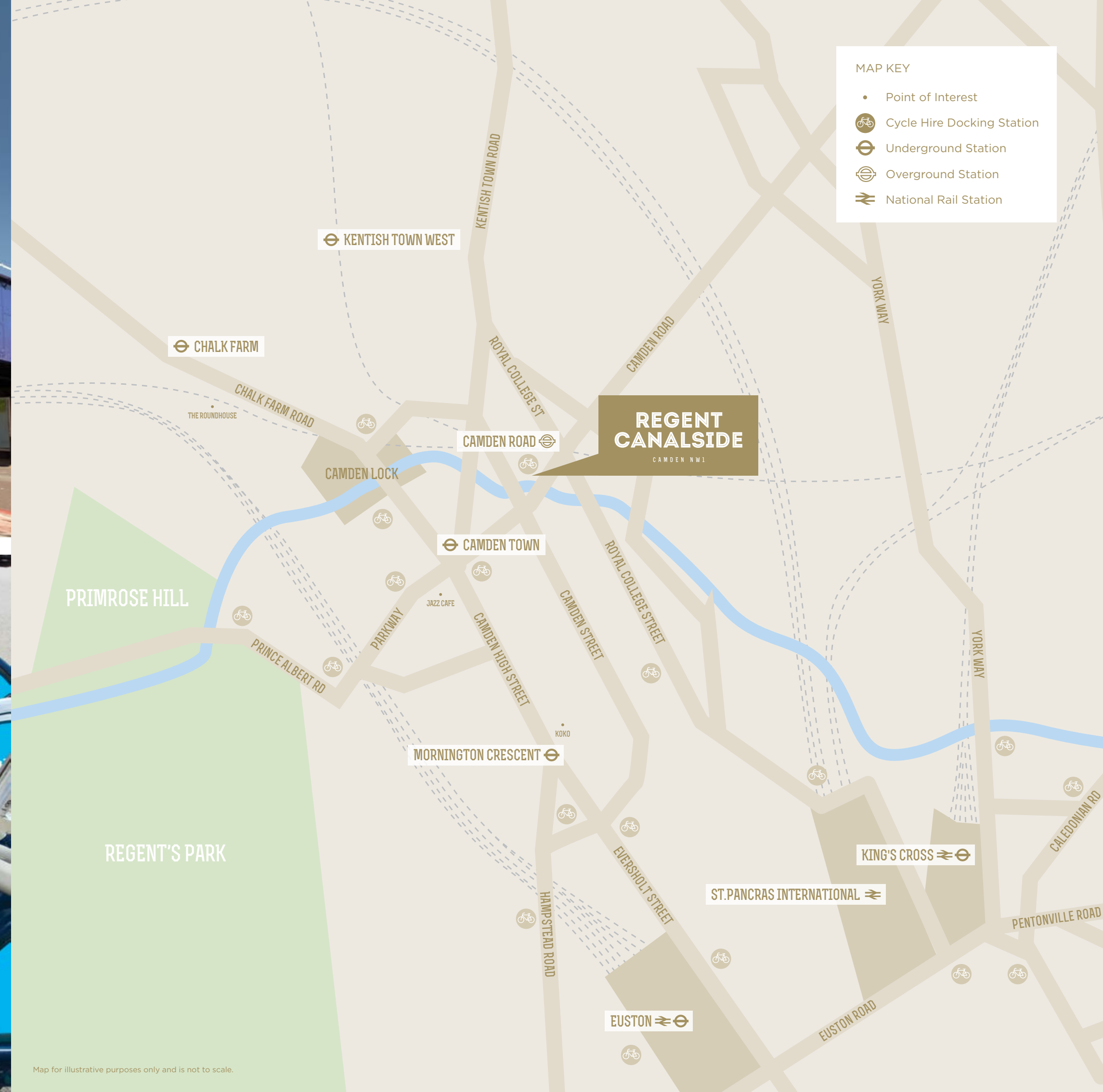


# DISCOVER LONDON FROM THE MOST PERFECT OF LOCATIONS

Camden has so much to offer, but should you wish to explore further, the options on offer to you are plentiful. Regent Canalside is just a short walk away from Camden Town underground station, one of the busiest stations and a major junction on the Northern Line. Within minutes, you could be walking amongst the lights of the West End or at the heart of the City. King's Cross St Pancras is just a few minutes away, opening up the rest of the UK and beyond.



CAMDEN ROAD STATION CAMDEN





THE CITY

THE LONDON EYE

KNIGHTSBRIDGE

KING'S CROSS STATION

EUSTON STATION

THE WEST END

BOND STREET

**REGENT CANALSIDE**

CAMDEN NW1

CAMDEN TOWN STATION

REGENT'S PARK

CAMDEN LOCK

LONDON ZOO

CAMDEN MARKET

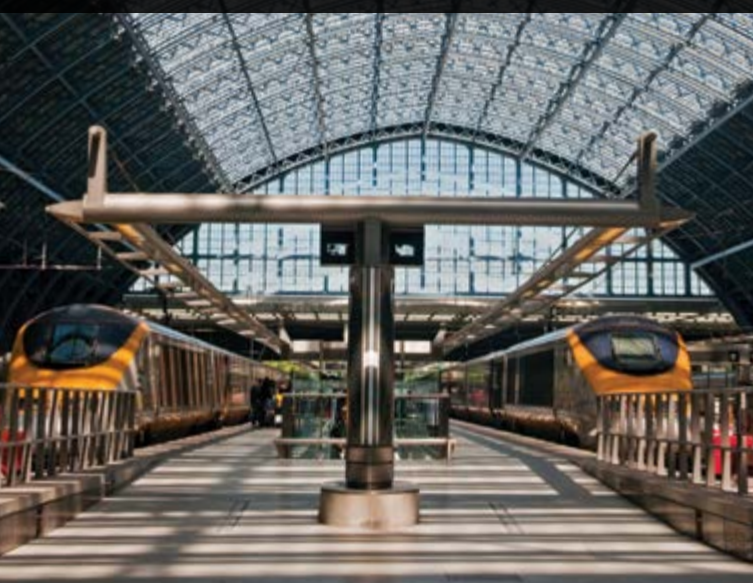
MAP KEY

- University
- Cycle Hire Docking Station
- Underground Station
- National Rail Station
- Thames Clipper



**REGENT CANALSIDE**  
CAMDEN NW1

**5 MINUTES** TO KING'S CROSS INTERNATIONAL STATION



**5 MINUTES** WALK TO THE VIEWS ON PRIMROSE HILL



**10 MINUTES** TO THE SHOPPING AT OXFORD CIRCUS



**11 MINUTES** TO THE CITY OF LONDON



**15 MINUTES** TO KNIGHTSBRIDGE



**10 MINUTES** WALK TO REGENT'S PARK



**11 MINUTES** TO THE LUXURY SHOPPING OF BOND STREET



**16 MINUTES** TO THE OLYMPIC STADIUM



**1 HOUR** TO HEATHROW INTERNATIONAL AIRPORT



**2.5 HOURS** ON THE EUROSTAR TO PARIS FROM KING'S CROSS



Please note times and distances indicated are approximate only and not necessarily direct journeys. Sources: National Rail, Google Maps and TFL.

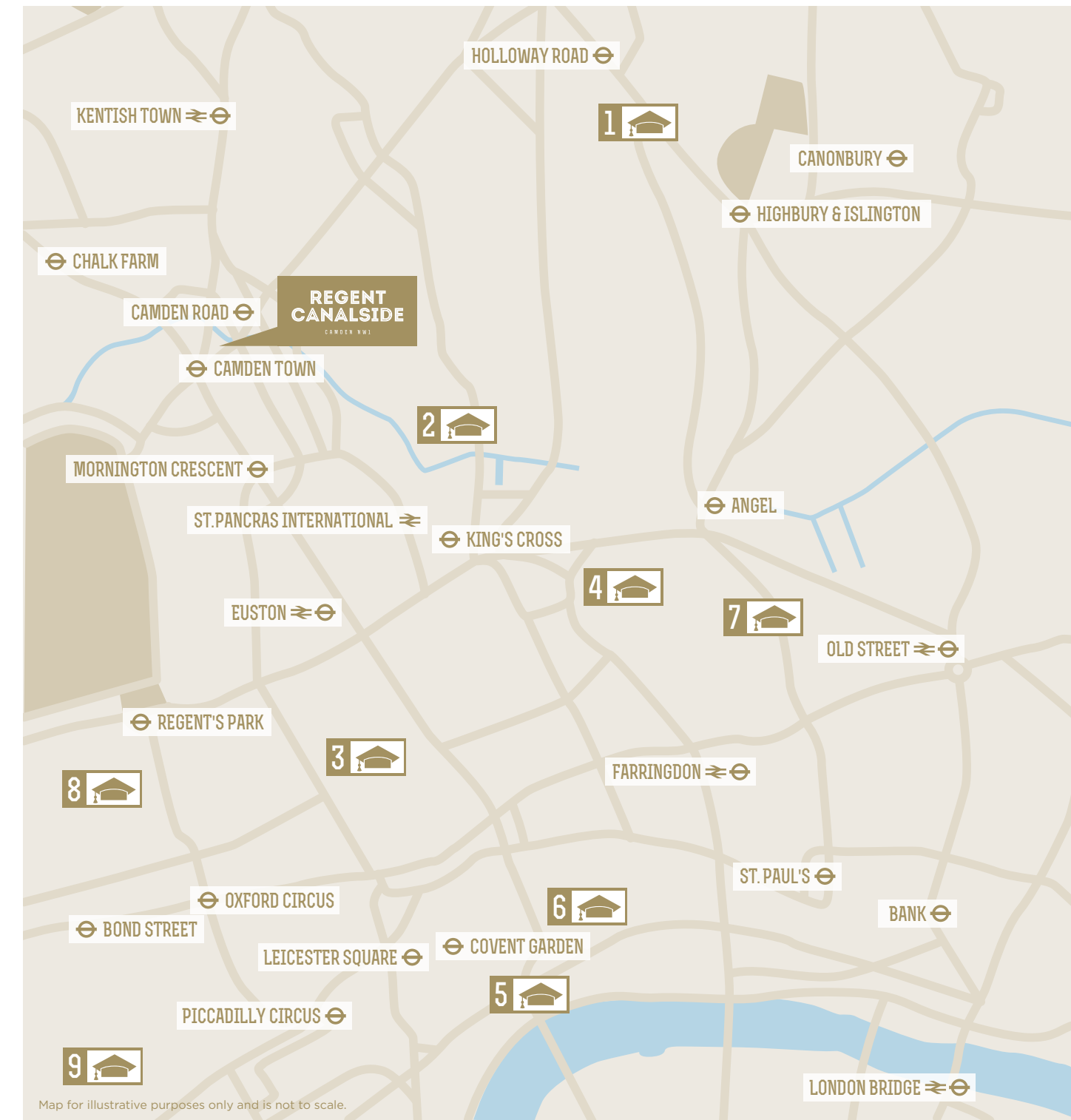
# THE WORLD'S BEST EDUCATIONAL INSTITUTIONS

From the creative arts to more traditional courses, such as economics, law and medicine, London's universities are rightly renowned the world over. The London Business School offers the world's best MBA according to the FT. UCL and King's College are ranked the 7th and 27th best universities in the world\*. While LSE is the best place to study Accounting and Finance, Economics and Social Policy in the UK.\*\*

\*QS World University Rankings 2011/12  
\*\*The Complete University Guide 2012



KING'S COLLEGE LIBRARY LONDON



## UNIVERSITIES

- 1 London Metropolitan University  
5mins
- 2 Central St Martins  
3mins (King's Cross Station)
- 3 University College London (UCL)  
5mins (Euston Station)
- 4 The School of Oriental & African Studies  
7mins (Russell Square Station)
- 5 King's College  
9mins (Holborn Station)
- 6 London School of Economics (LSE)  
9mins (Holborn Station)
- 7 City University  
10mins (Angel Station)
- 8 London Business School  
14mins (Baker Street Station)
- 9 Imperial College  
14mins (South Kensington Station)

# SITEMAP AND FLOORPLANS



Computer Generated Image. CGIs are artist's impressions, created to give an indication of the development, its surrounding and individual apartment's interior design. The developer reserves the right to change any elements without notice and these images should not be relied upon as an exact representation of the development.

# SITEMAP





# LOG

**APARTMENT 1**  
**3 BEDROOM FLAT**

**APARTMENT 2**  
**3 BEDROOM FLAT**

**APARTMENT 11**  
**2 BEDROOM FLAT**



Floor plans and dimensions are taken from architectural drawings and could vary during construction. They are provided for guidance only. Total Area are provided as gross internal areas under the RICS measuring practice. Layouts are indicative only and are subject to change.

# APARTMENT 1

**BEDROOM 1**  
13'2" x 12'0" ft<sup>2</sup>  
181.9 ft<sup>2</sup>

**BEDROOM 2**  
15'2" x 8'10" ft<sup>2</sup>  
150.7 ft<sup>2</sup>

**BEDROOM 3**  
16'2" x 10'10" ft<sup>2</sup>  
190.5 ft<sup>2</sup>

**STORAGE 1**  
2'4" x 4'11" ft<sup>2</sup>  
10.7 ft<sup>2</sup>

**KITCHEN**  
13'4" x 7'0" ft<sup>2</sup>  
90.4 ft<sup>2</sup>

**TOTAL INTERNAL AREA**  
1266.9 ft<sup>2</sup>

**EN SUITE**  
8'0" x 4'5" ft<sup>2</sup>  
33.3 ft<sup>2</sup>

**EN SUITE**  
7'7" x 4'5" ft<sup>2</sup>  
35.5 ft<sup>2</sup>

**BATHROOM**  
8'10" x 6'0" ft<sup>2</sup>  
52.7 ft<sup>2</sup>

**STORAGE 2**  
2'4" x 2'6" ft<sup>2</sup>  
5.4 ft<sup>2</sup>

**LIVING & DINING**  
15'5" x 20'3" ft<sup>2</sup>  
297.1 ft<sup>2</sup>

**TERRACE**  
29'3" x 4'0" ft<sup>2</sup>  
118.4 ft<sup>2</sup>



Floor plans and dimensions are taken from architectural drawings and could vary during construction. They are provided for guidance only. Total Area are provided as gross internal areas under the RICS measuring practice. Layouts are indicative only and are subject to change.

# APARTMENT 2

**BEDROOM 1**  
16'6" x 17'7" ft<sup>2</sup>  
232.5 ft<sup>2</sup>

**BEDROOM 2**  
14'2" x 13'9" ft<sup>2</sup>  
186.2 ft<sup>2</sup>

**BEDROOM 3**  
11'9" x 11'4" ft<sup>2</sup>  
131.3 ft<sup>2</sup>

**STORAGE 1**  
2'7" x 5'11" ft<sup>2</sup>  
15.1 ft<sup>2</sup>

**KITCHEN**  
9'5" x 8'3" ft<sup>2</sup>  
77.5 ft<sup>2</sup>

**TOTAL INTERNAL AREA**  
1363.8 ft<sup>2</sup>

**EN SUITE**  
7'3" x 8'0" ft<sup>2</sup>  
38.7 ft<sup>2</sup>

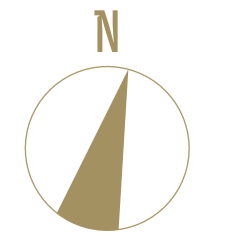
**EN SUITE**  
4'5" x 7'7" ft<sup>2</sup>  
33.3 ft<sup>2</sup>

**BATHROOM**  
8'9" x 6'0" ft<sup>2</sup>  
48.4 ft<sup>2</sup>

**STORAGE 2**  
5'5" x 2'2" ft<sup>2</sup>  
11.8 ft<sup>2</sup>

**LIVING & DINING**  
20'7" x 19'13" ft<sup>2</sup>  
337.9 ft<sup>2</sup>

**TERRACE**  
20'11" x 4'1" ft<sup>2</sup>  
85.0 ft<sup>2</sup>



Floor plans and dimensions are taken from architectural drawings and could vary during construction. They are provided for guidance only. Total Area are provided as gross internal areas under the RICS measuring practice. Layouts are indicative only and are subject to change.

# APARTMENT 11

**BEDROOM 1**  
13'1" x 18'4" ft<sup>2</sup>  
174.8 ft<sup>2</sup>

**BEDROOM 2**  
18'4" x 11'0" ft<sup>2</sup>  
176.6 ft<sup>2</sup>

**STORAGE**  
2'8" x 6'8" ft<sup>2</sup>  
17.5 ft<sup>2</sup>

**LIVING & DINING**  
16'0" x 15'3" ft<sup>2</sup>  
249.5 ft<sup>2</sup>

**EN SUITE**  
4'5" x 7'7" ft<sup>2</sup>  
33.4 ft<sup>2</sup>

**BATHROOM**  
8'2" x 6'0" ft<sup>2</sup>  
59.4 ft<sup>2</sup>

**KITCHEN**  
11'3" x 7'10" ft<sup>2</sup>  
88.3 ft<sup>2</sup>

**TOTAL INTERNAL AREA**  
934.3 ft<sup>2</sup>





**APARTMENT 3**  
**2 BEDROOM FLAT**

**APARTMENT 4**  
**2 BEDROOM FLAT**

**APARTMENT 5**  
**2 BEDROOM FLAT**

**APARTMENT 12**  
**3 BEDROOM FLAT**

**APARTMENT 13**  
**1 BEDROOM FLAT**



Floor plans and dimensions are taken from architectural drawings and could vary during construction. They are provided for guidance only. Total Area are provided as gross internal areas under the RICS measuring practice. Layouts are indicative only and are subject to change.

# APARTMENT 3

**MASTER BEDROOM**  
13'11" x 14'4" ft<sup>2</sup>  
184.6 ft<sup>2</sup>

**BEDROOM**  
13'0" x 7'9" ft<sup>2</sup>  
99.4 ft<sup>2</sup>

**STORAGE**  
2'3" x 6'5" ft<sup>2</sup>  
17.0 ft<sup>2</sup>

**LIVING & DINING**  
16'8" x 13'4" ft<sup>2</sup>  
185.6 ft<sup>2</sup>

**BALCONY**  
11.4'X" x 3'10" ft<sup>2</sup>  
48.4 ft<sup>2</sup>

**EN SUITE**  
7'10" x 5'1" ft<sup>2</sup>  
40.6 ft<sup>2</sup>

**BATHROOM**  
8'0" x 7'0" ft<sup>2</sup>  
52.6 ft<sup>2</sup>

**KITCHEN**  
14'0" x 5'9" ft<sup>2</sup>  
100.5 ft<sup>2</sup>

**TOTAL INTERNAL AREA**  
883.7 ft<sup>2</sup>



Floor plans and dimensions are taken from architectural drawings and could vary during construction. They are provided for guidance only. Total Area are provided as gross internal areas under the RICS measuring practice. Layouts are indicative only and are subject to change.

# APARTMENT 4

**MASTER BEDROOM**  
13'9" x 9'0" ft<sup>2</sup>  
122.8 ft<sup>2</sup>

**BEDROOM**  
10'6" x 10'4" ft<sup>2</sup>  
109.8 ft<sup>2</sup>

**KITCHEN**  
15'1" x 4'11" ft<sup>2</sup>  
73.2 ft<sup>2</sup>

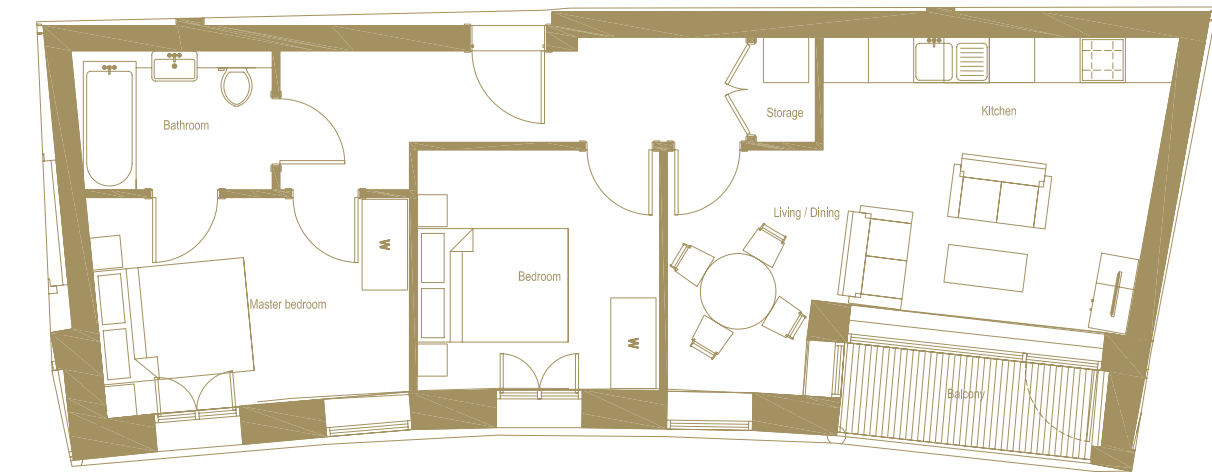
**TOTAL INTERNAL AREA**  
658.7 ft<sup>2</sup>

**EN SUITE**  
8'5" x 6'0" ft<sup>2</sup>  
51.0 ft<sup>2</sup>

**STORAGE**  
2'7" x 4'7" ft<sup>2</sup>  
11.8 ft<sup>2</sup>

**LIVING & DINING**  
20'6" x 7'4" ft<sup>2</sup>  
171.1 ft<sup>2</sup>

**BALCONY**  
11'6" x 3'11" ft<sup>2</sup>  
44.7 ft<sup>2</sup>



Floor plans and dimensions are taken from architectural drawings and could vary during construction. They are provided for guidance only. Total Area are provided as gross internal areas under the RICS measuring practice. Layouts are indicative only and are subject to change.

# APARTMENT 5

**MASTER BEDROOM**  
11'5" x 15'1" ft<sup>2</sup>  
168.7 ft<sup>2</sup>

**BEDROOM**  
13'11" x 10'6" ft<sup>2</sup>  
145.0 ft<sup>2</sup>

**BATHROOM**  
8'9" x 6'0" ft<sup>2</sup>  
51.2 ft<sup>2</sup>

**LIVING & DINING**  
21'3" x 15'5" ft<sup>2</sup>  
256.2 ft<sup>2</sup>

**BALCONY**  
6'6" x 3'10" ft<sup>2</sup>  
24.1 ft<sup>2</sup>

**EN SUITE**  
8'7" x 6'7" ft<sup>2</sup>  
42.0 ft<sup>2</sup>

**STORAGE**  
5'11" x 2'7" ft<sup>2</sup>  
15.5 ft<sup>2</sup>

**KITCHEN**  
11'10" x 7'10" ft<sup>2</sup>  
91.3 ft<sup>2</sup>

**TOTAL INTERNAL AREA**  
890.1 ft<sup>2</sup>



Floor plans and dimensions are taken from architectural drawings and could vary during construction. They are provided for guidance only. Total Area are provided as gross internal areas under the RICS measuring practice. Layouts are indicative only and are subject to change.

# APARTMENT 12

**MASTER BEDROOM**  
12'4" x 19'5" ft<sup>2</sup>  
196.9 ft<sup>2</sup>

**BEDROOM 1**  
16'9" x 9'3" ft<sup>2</sup>  
153.9 ft<sup>2</sup>

**BATHROOM**  
6'0" x 9'3" ft<sup>2</sup>  
48.4 ft<sup>2</sup>

**STORAGE 2**  
2'6" x 5'11" ft<sup>2</sup>  
13.9 ft<sup>2</sup>

**LIVING & DINING**  
16'3" x 9'2" ft<sup>2</sup>  
163.6 ft<sup>2</sup>

**BALCONY**  
15'1" x 4'0" ft<sup>2</sup>  
55.9 ft<sup>2</sup>

**EN SUITE**  
5'1" x 7'7" ft<sup>2</sup>  
33.3 ft<sup>2</sup>

**BEDROOM 2**  
17'9" x 9'0" ft<sup>2</sup>  
151.7 ft<sup>2</sup>

**STORAGE 1**  
2'6" x 3'3" ft<sup>2</sup>  
7.5 ft<sup>2</sup>

**KITCHEN**  
16'3" x 7'10" ft<sup>2</sup>  
96.8 ft<sup>2</sup>

**TOTAL INTERNAL AREA**  
1059.1 ft<sup>2</sup>



Floor plans and dimensions are taken from architectural drawings and could vary during construction. They are provided for guidance only. Total Area are provided as gross internal areas under the RICS measuring practice. Layouts are indicative only and are subject to change.

# APARTMENT 13

**MASTER BEDROOM**  
9'7" x 8'10" ft<sup>2</sup>  
109.5 ft<sup>2</sup>

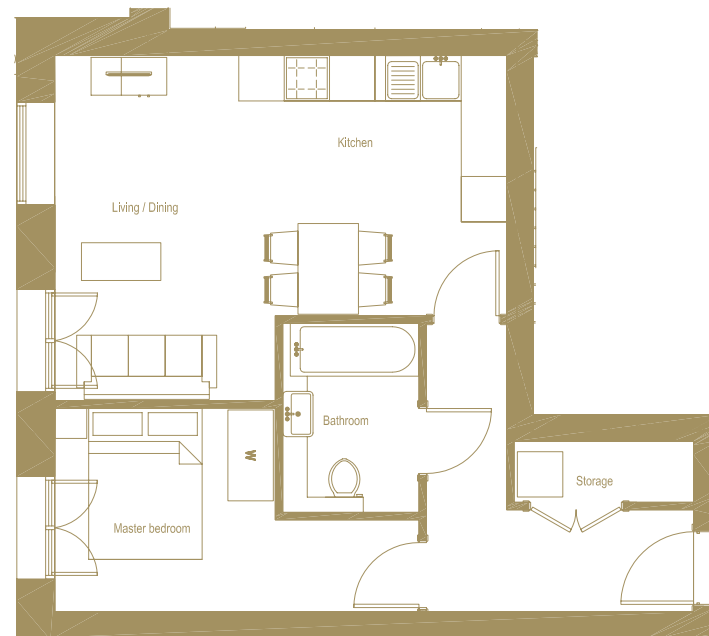
**STORAGE**  
7'9" x 2'8" ft<sup>2</sup>  
20.5 ft<sup>2</sup>

**LIVING & DINING**  
9'7" x 15'0" ft<sup>2</sup>  
172.7 ft<sup>2</sup>

**BATHROOM**  
5'11" x 8'2" ft<sup>2</sup>  
48.4 ft<sup>2</sup>

**KITCHEN**  
11'7" x 7'3" ft<sup>2</sup>  
83.9 ft<sup>2</sup>

**TOTAL INTERNAL AREA**  
532.8 ft<sup>2</sup>



Floor plans and dimensions are taken from architectural drawings and could vary during construction. They are provided for guidance only. Total Area are provided as gross internal areas under the RICS measuring practice. Layouts are indicative only and are subject to change.



Photograph from The Mill apartments show apartment

# 1

**APARTMENT 6**  
**2 BEDROOM FLAT**

**APARTMENT 7**  
**2 BEDROOM FLAT**

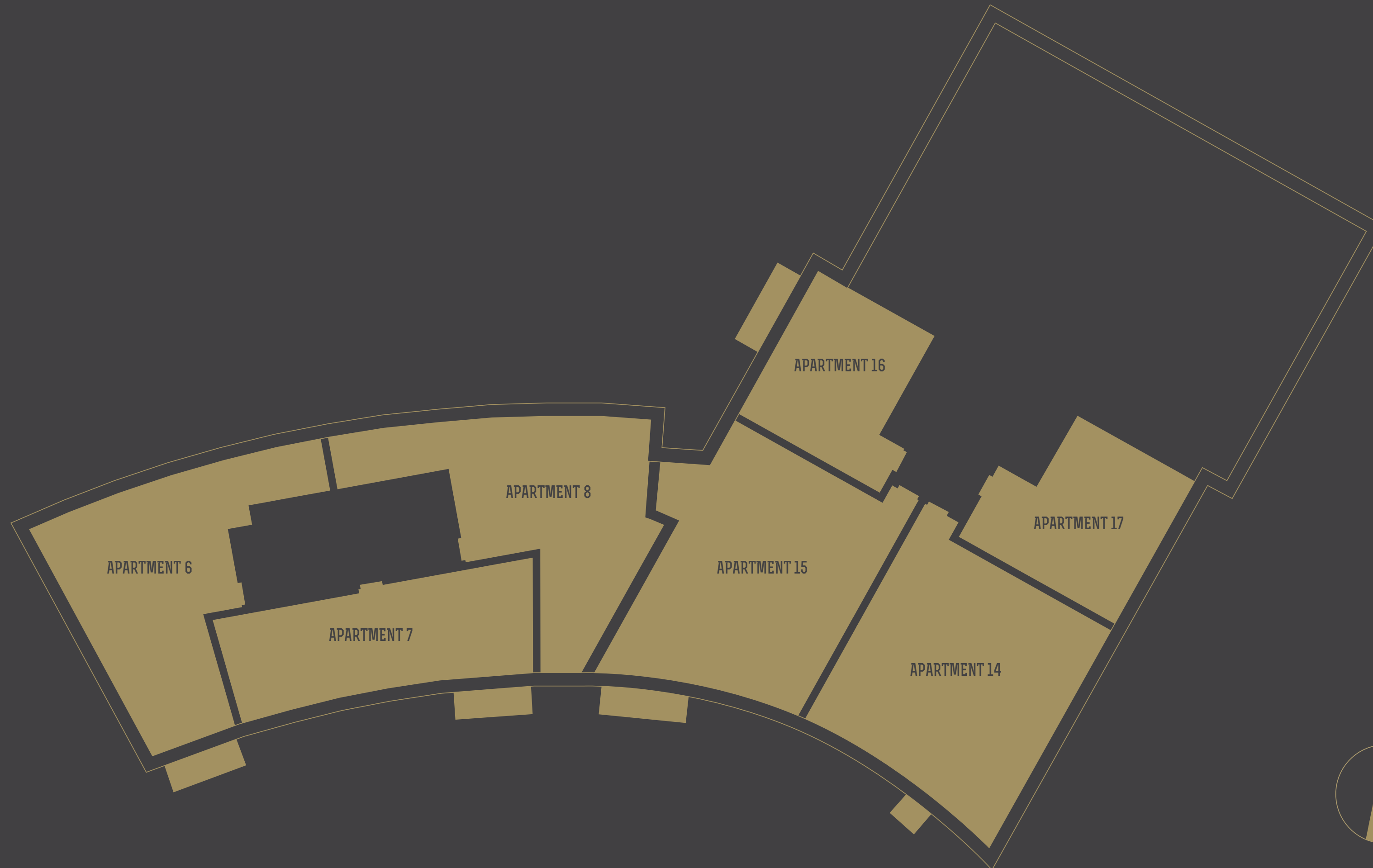
**APARTMENT 8**  
**2 BEDROOM FLAT**

**APARTMENT 14**  
**3 BEDROOM FLAT**

**APARTMENT 15**  
**3 BEDROOM FLAT**

**APARTMENT 16**  
**1 BEDROOM FLAT**

**APARTMENT 17**  
**1 BEDROOM FLAT**



Floor plans and dimensions are taken from architectural drawings and could vary during construction. They are provided for guidance only. Total Area are provided as gross internal areas under the RICS measuring practice. Layouts are indicative only and are subject to change.



# APARTMENT 6

**MASTER BEDROOM**  
14'0" x 14'3" ft<sup>2</sup>  
182.9 ft<sup>2</sup>

**BEDROOM**  
13'0" x 7'10" ft<sup>2</sup>  
102.3 ft<sup>2</sup>

**STORAGE**  
2'3" x 6'5" ft<sup>2</sup>  
17.2 ft<sup>2</sup>

**LIVING & DINING**  
15'5" x 17'2" ft<sup>2</sup>  
255.1 ft<sup>2</sup>

**BALCONY**  
11'1" x 5'4" ft<sup>2</sup>  
60.3 ft<sup>2</sup>

**EN SUITE**  
8'0" x 5'1" ft<sup>2</sup>  
35.5 ft<sup>2</sup>

**BATHROOM**  
8'0" x 7'0" ft<sup>2</sup>  
50.6 ft<sup>2</sup>

**KITCHEN**  
13'10" x 5'9" ft<sup>2</sup>  
86.1 ft<sup>2</sup>

**TOTAL INTERNAL AREA**  
938.6 ft<sup>2</sup>



# APARTMENT 7

**MASTER BEDROOM**  
13'8" x 11'11" ft<sup>2</sup>  
142.1 ft<sup>2</sup>

**BEDROOM**  
10'6" x 11'4" ft<sup>2</sup>  
119.5 ft<sup>2</sup>

**STORAGE 1**  
2'7" x 3'7" ft<sup>2</sup>  
9.7 ft<sup>2</sup>

**KITCHEN**  
14'9" x 3'11" ft<sup>2</sup>  
58.1 ft<sup>2</sup>

**TOTAL INTERNAL AREA**  
713.6 ft<sup>2</sup>

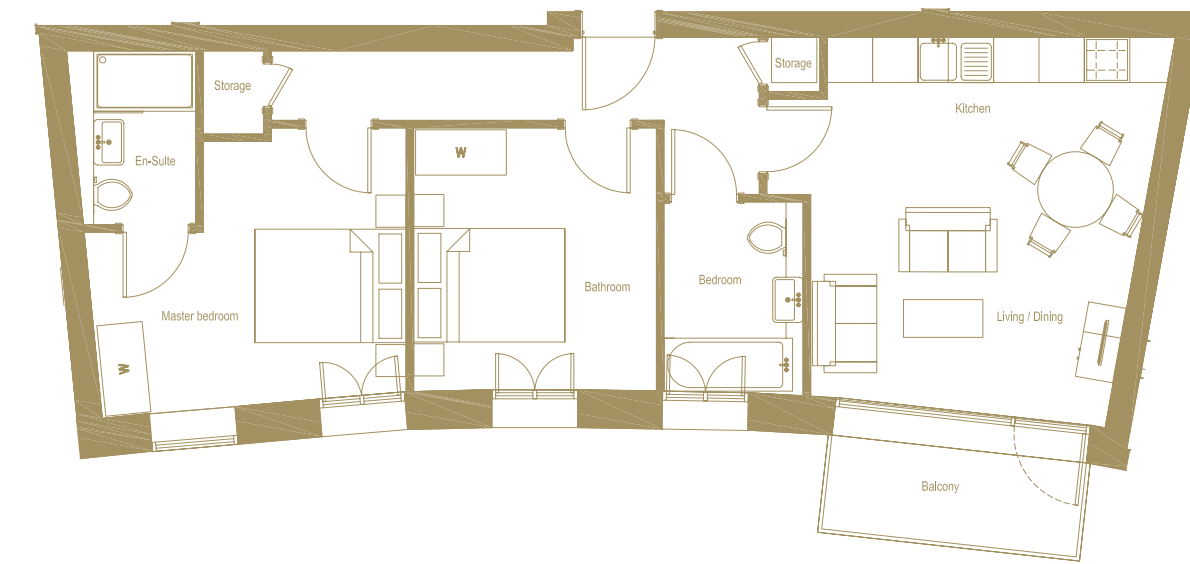
**EN SUITE**  
5'3" x 7'7" ft<sup>2</sup>  
33.4 ft<sup>2</sup>

**BATHROOM**  
6'0" x 8'4" ft<sup>2</sup>  
45.2 ft<sup>2</sup>

**STORAGE 2**  
2'4" x 2'4" ft<sup>2</sup>  
5.4 ft<sup>2</sup>

**LIVING & DINING**  
13'11" x 12'4" ft<sup>2</sup>  
181.9 ft<sup>2</sup>

**BALCONY**  
11'1" x 5'4" ft<sup>2</sup>  
59.2 ft<sup>2</sup>



# APARTMENT 8

**MASTER BEDROOM**  
11'4" x 16'5" ft<sup>2</sup>  
168.9 ft<sup>2</sup>

**BEDROOM**  
13'9" x 10'6" ft<sup>2</sup>  
145.3 ft<sup>2</sup>

**STORAGE 1**  
5'11" x 2'7" ft<sup>2</sup>  
15.1 ft<sup>2</sup>

**LIVING & DINING**  
21'7" x 15'9" ft<sup>2</sup>  
258.3 ft<sup>2</sup>

**BALCONY**  
6.6'X" x 3'11" ft<sup>2</sup>  
23.7 ft<sup>2</sup>

**EN SUITE**  
6'3" x 6'10" ft<sup>2</sup>  
40.9 ft<sup>2</sup>

**BATHROOM**  
8'9" x 6'0" ft<sup>2</sup>  
47.4 ft<sup>2</sup>

**KITCHEN**  
11'9" x 7'11" ft<sup>2</sup>  
90.4 ft<sup>2</sup>

**TOTAL INTERNAL AREA**  
890.1 ft<sup>2</sup>



Floor plans and dimensions are taken from architectural drawings and could vary during construction. They are provided for guidance only. Total Area are provided as gross internal areas under the RICS measuring practice. Layouts are indicative only and are subject to change.

# APARTMENT 14

**MASTER BEDROOM**  
12'2" x 12'10" ft<sup>2</sup>  
144.2 ft<sup>2</sup>

**BEDROOM**  
13'6" x 9'0" ft<sup>2</sup>  
118.4 ft<sup>2</sup>

**BATHROOM**  
6'0" x 8'6" ft<sup>2</sup>  
46.3 ft<sup>2</sup>

**STORAGE 2**  
2'7" x 5'10" ft<sup>2</sup>  
15.1 ft<sup>2</sup>

**LIVING & DINING**  
19'3" x 13'11" ft<sup>2</sup>  
308.9 ft<sup>2</sup>

**BALCONY**  
4'6" x 5'4" ft<sup>2</sup>  
23.7 ft<sup>2</sup>

**EN SUITE**  
5'1" x 8'6" ft<sup>2</sup>  
37.6 ft<sup>2</sup>

**BEDROOM**  
9'10" x 16'9" ft<sup>2</sup>  
165.8 ft<sup>2</sup>

**STORAGE 1**  
2'7" x 2'5" ft<sup>2</sup>  
6.5 ft<sup>2</sup>

**KITCHEN**  
3'11" x 15'1" ft<sup>2</sup>  
59.2 ft<sup>2</sup>

**TOTAL INTERNAL AREA**  
1158.2 ft<sup>2</sup>



Floor plans and dimensions are taken from architectural drawings and could vary during construction. They are provided for guidance only. Total Area are provided as gross internal areas under the RICS measuring practice. Layouts are indicative only and are subject to change.

# APARTMENT 15

**MASTER BEDROOM**  
9'1" x 12'2" ft<sup>2</sup>  
109.8 ft<sup>2</sup>

**BEDROOM**  
11'0" x 16'8" ft<sup>2</sup>  
157.1 ft<sup>2</sup>

**BATHROOM**  
9'1" x 6'3" ft<sup>2</sup>  
51.6 ft<sup>2</sup>

**KITCHEN**  
7'10" x 11'5" ft<sup>2</sup>  
89.3 ft<sup>2</sup>

**TOTAL INTERNAL AREA**  
1148.5 ft<sup>2</sup>

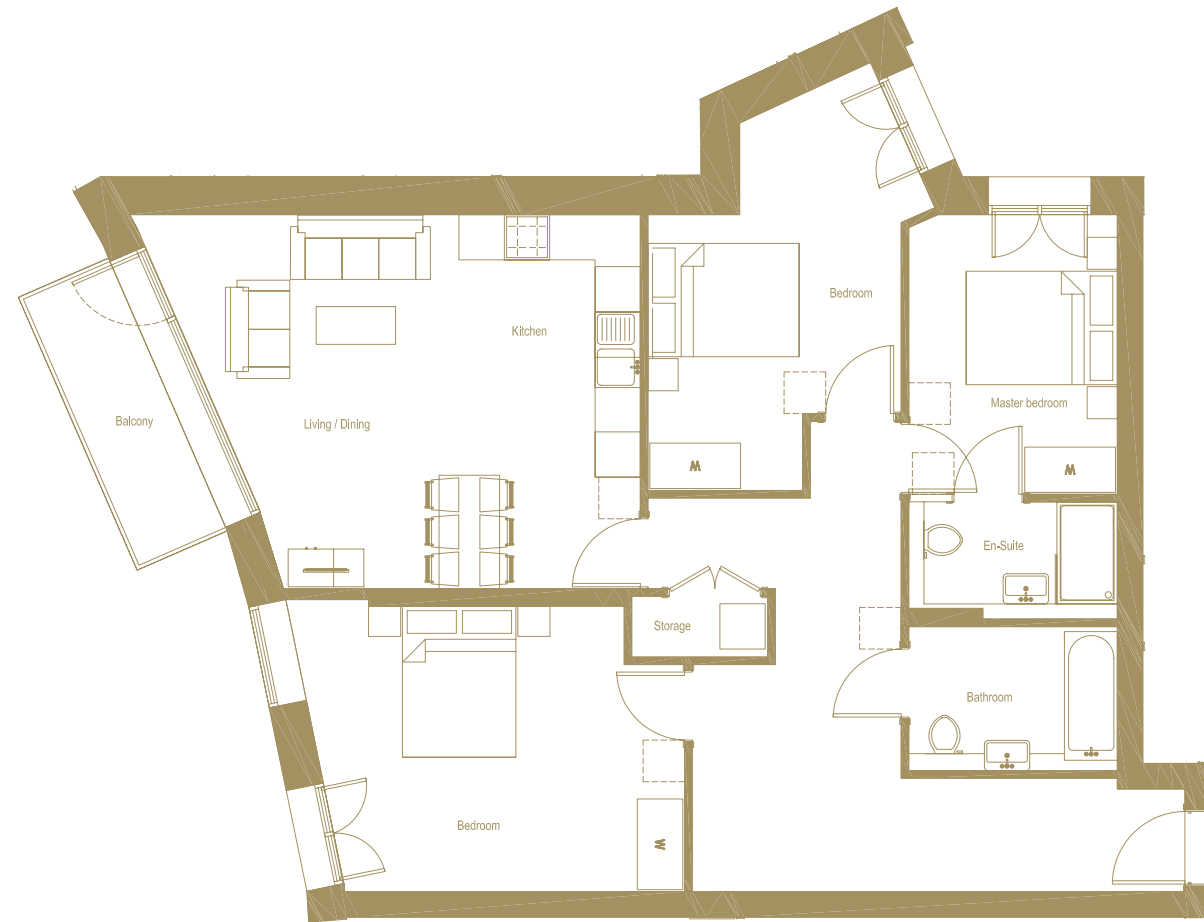
**EN SUITE**  
9'1" x 5'1" ft<sup>2</sup>  
37.6 ft<sup>2</sup>

**BEDROOM**  
16'1" x 12'5" ft<sup>2</sup>  
192.6 ft<sup>2</sup>

**STORAGE**  
5'11" x 2'8" ft<sup>2</sup>  
15.1 ft<sup>2</sup>

**LIVING & DINING**  
11'5" x 16'2" ft<sup>2</sup>  
212.1 ft<sup>2</sup>

**BALCONY**  
4'1" x 12'7" ft<sup>2</sup>  
66.7 ft<sup>2</sup>



Floor plans and dimensions are taken from architectural drawings and could vary during construction. They are provided for guidance only. Total Area are provided as gross internal areas under the RICS measuring practice. Layouts are indicative only and are subject to change.

# APARTMENT 16

**BEDROOM**  
9'3" x 8'10" ft<sup>2</sup>  
104.4 ft<sup>2</sup>

**STORAGE**  
4'11" x 2'6" ft<sup>2</sup>  
11.8 ft<sup>2</sup>

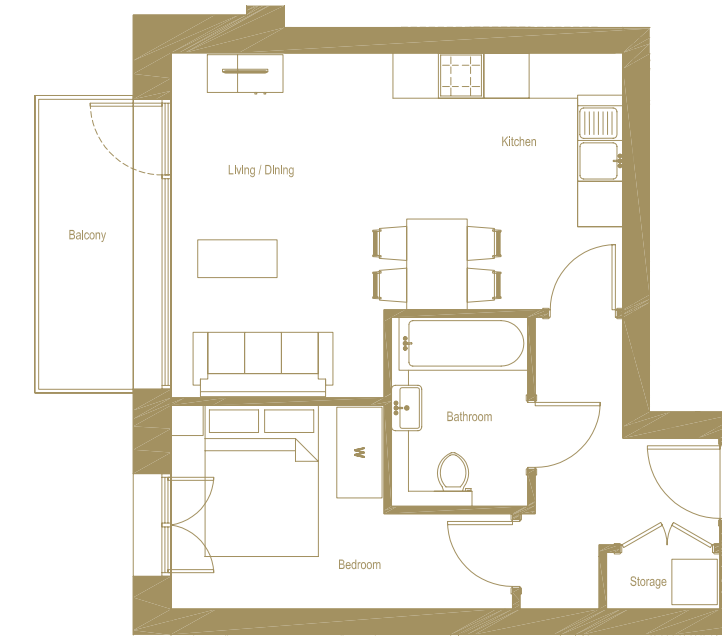
**LIVING & DINING**  
9'8" x 15'0" ft<sup>2</sup>  
178.7 ft<sup>2</sup>

**BALCONY**  
4'1" x 12'7" ft<sup>2</sup>  
67.8 ft<sup>2</sup>

**BATHROOM**  
5'11" x 8'2" ft<sup>2</sup>  
43.1 ft<sup>2</sup>

**KITCHEN**  
10'0" x 7'7" ft<sup>2</sup>  
75.3 ft<sup>2</sup>

**TOTAL INTERNAL AREA**  
503.7 ft<sup>2</sup>



Floor plans and dimensions are taken from architectural drawings and could vary during construction. They are provided for guidance only. Total Area are provided as gross internal areas under the RICS measuring practice. Layouts are indicative only and are subject to change.

# APARTMENT 17

**BEDROOM**  
18'2" x 9'0" ft<sup>2</sup>  
151.8 ft<sup>2</sup>

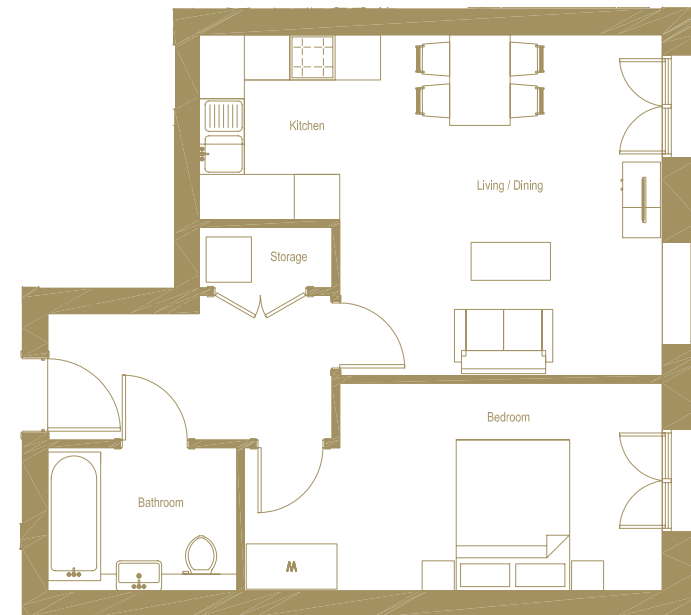
**STORAGE**  
5'9" x 2'7" ft<sup>2</sup>  
15.1 ft<sup>2</sup>

**LIVING & DINING**  
14'0" x 14'9" ft<sup>2</sup>  
200.2 ft<sup>2</sup>

**BATHROOM**  
8'2" x 6'3" ft<sup>2</sup>  
47.4 ft<sup>2</sup>

**KITCHEN**  
7'10" x 8'0" ft<sup>2</sup>  
56.0 ft<sup>2</sup>

**TOTAL INTERNAL AREA**  
564.0 ft<sup>2</sup>



# 2

**APARTMENT 9**  
**2 BEDROOM FLAT**

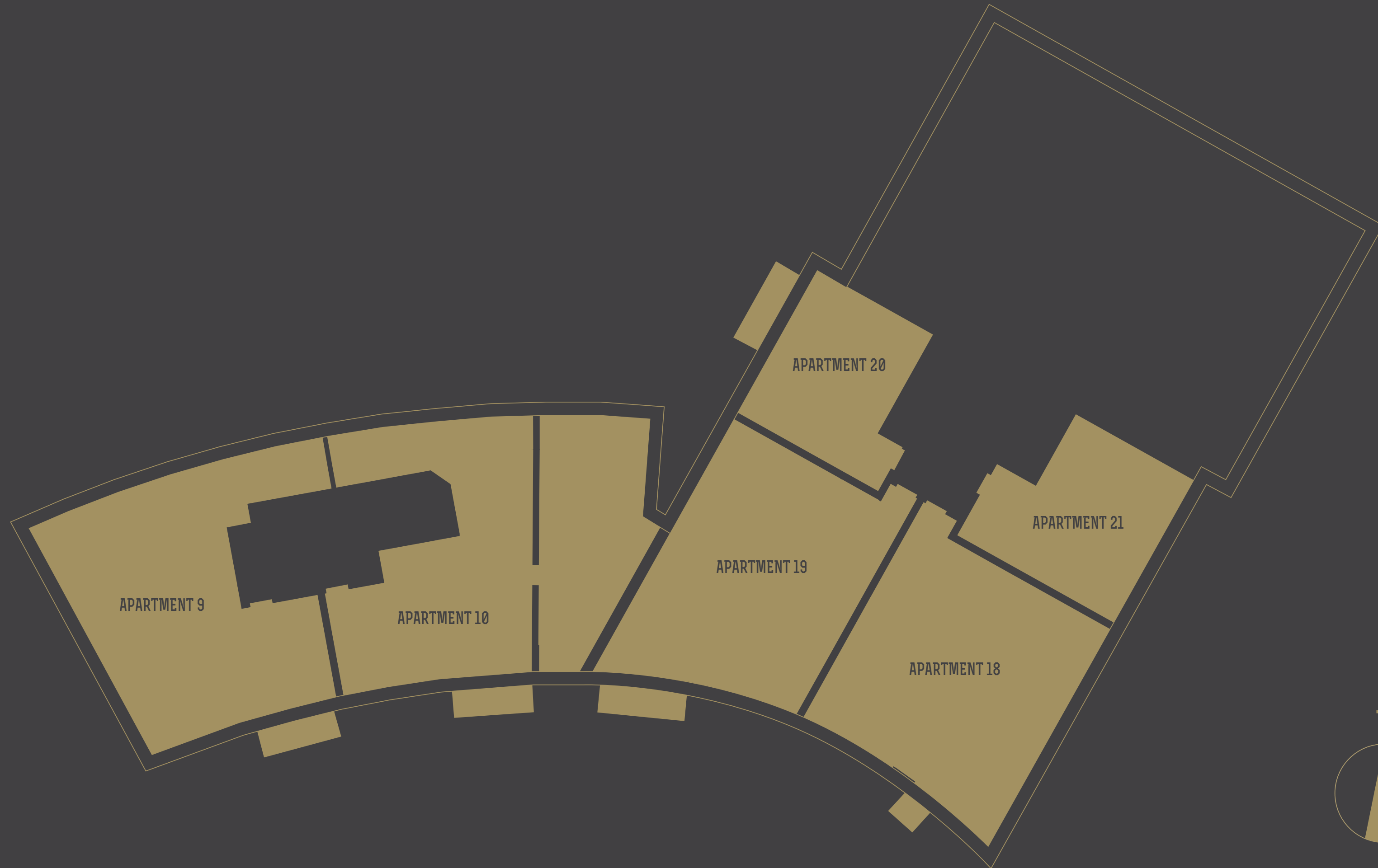
**APARTMENT 10**  
**3 BEDROOM FLAT**

**APARTMENT 18**  
**3 BEDROOM FLAT**

**APARTMENT 19**  
**3 BEDROOM FLAT**

**APARTMENT 20**  
**1 BEDROOM FLAT**

**APARTMENT 21**  
**1 BEDROOM FLAT**



# APARTMENT 9

**BEDROOM 1**  
16'0" x 11'9" ft<sup>2</sup>  
168.9 ft<sup>2</sup>

**BEDROOM 2**  
13'9" x 10'7" ft<sup>2</sup>  
141.0 ft<sup>2</sup>

**STORAGE 1**  
6'9" x 2'7" ft<sup>2</sup>  
17.2 ft<sup>2</sup>

**STORAGE 3**  
7'6" x 2'8" ft<sup>2</sup>  
19.4 ft<sup>2</sup>

**LIVING & DINING**  
26'9" x 15'3" ft<sup>2</sup>  
296.0 ft<sup>2</sup>

**BALCONY 1**  
11'6" x 5'4" ft<sup>2</sup>  
60.3 ft<sup>2</sup>

**EN SUITE**  
5'0" x 7'6" ft<sup>2</sup>  
42.0 ft<sup>2</sup>

**BATHROOM**  
8'3" x 6'0" ft<sup>2</sup>  
45.2 ft<sup>2</sup>

**STORAGE 2**  
7'9" x 4'9" ft<sup>2</sup>  
26.9 ft<sup>2</sup>

**KITCHEN**  
10'6" x 8'2" ft<sup>2</sup>  
86.1 ft<sup>2</sup>

**TOTAL INTERNAL AREA**  
970.9 ft<sup>2</sup>

**BALCONY 2**  
4'7" x 4'7" ft<sup>2</sup>  
209.9 ft<sup>2</sup>



# APARTMENT 10

**BEDROOM 1**  
12'2" x 17'0" ft<sup>2</sup>  
192.6 ft<sup>2</sup>

**BEDROOM 2**  
10'2" x 11'8" ft<sup>2</sup>  
133.5 ft<sup>2</sup>

**BEDROOM 3**  
12'10" x 10'8" ft<sup>2</sup>  
125.9 ft<sup>2</sup>

**STORAGE 1**  
5'11" x 2'7" ft<sup>2</sup>  
15.1 ft<sup>2</sup>

**KITCHEN**  
3'11" x 16'5" ft<sup>2</sup>  
64.6 ft<sup>2</sup>

**TOTAL INTERNAL AREA**  
1201.2 ft<sup>2</sup>

**BALCONY 2**  
6'6" x 3'10" ft<sup>2</sup>  
23.7 ft<sup>2</sup>

**EN SUITE ONE**  
7'7" x 4'11" ft<sup>2</sup>  
36.6 ft<sup>2</sup>

**EN SUITE TWO**  
4'5" x 7'7" ft<sup>2</sup>  
33.3 ft<sup>2</sup>

**BATHROOM**  
7'7" x 5'7" ft<sup>2</sup>  
40.9 ft<sup>2</sup>

**STORAGE 2**  
7'6" x 2'8" ft<sup>2</sup>  
19.4 ft<sup>2</sup>

**LIVING & DINING**  
10'11" x 30'2" ft<sup>2</sup>  
347.7 ft<sup>2</sup>

**BALCONY 1**  
11'6" x 5'4" ft<sup>2</sup>  
60.3 ft<sup>2</sup>

**BALCONY 3**  
48'7" x 4'7" ft<sup>2</sup>  
247.6 ft<sup>2</sup>



# APARTMENT 18

<b>BEDROOM 1</b> 12'2" x 12'7" ft <sup>2</sup> 137.7 ft <sup>2</sup>	<b>BEDROOM 2</b> 9'6" x 11'11" ft <sup>2</sup> 148.5 ft <sup>2</sup>	<b>BEDROOM 3</b> 12'4" x 8'7" ft <sup>2</sup> 104.4 ft <sup>2</sup>	<b>STORAGE 1</b> 2'7" x 2'4" ft <sup>2</sup> 5.4 ft <sup>2</sup>	<b>KITCHEN</b> 6'10" x 14'1" ft <sup>2</sup> 95.8 ft <sup>2</sup>	<b>TOTAL INTERNAL AREA</b> 1158.2 ft <sup>2</sup>
<b>EN SUITE</b> 5'1" x 8'5" ft <sup>2</sup> 37.7 ft <sup>2</sup>	<b>EN SUITE</b> 5'1" x 8'2" ft <sup>2</sup> 36.6 ft <sup>2</sup>	<b>BATHROOM</b> 6'0" x 8'6" ft <sup>2</sup> 47.4 ft <sup>2</sup>	<b>STORAGE 2</b> 2'7" x 5'10" ft <sup>2</sup> 15.1 ft <sup>2</sup>	<b>LIVING &amp; DINING</b> 23'6" x 11'9" ft <sup>2</sup> 293.9 ft <sup>2</sup>	<b>BALCONY</b> 4'6" x 5'4" ft <sup>2</sup> 23.7 ft <sup>2</sup>



Floor plans and dimensions are taken from architectural drawings and could vary during construction. They are provided for guidance only. Total Area are provided as gross internal areas under the RICS measuring practice. Layouts are indicative only and are subject to change.

# APARTMENT 19

<b>BEDROOM 1</b> 11'7" x 12'8" ft <sup>2</sup> 186.2 ft <sup>2</sup>	<b>BEDROOM 2</b> 8'11" x 10'2" ft <sup>2</sup> 115.1 ft <sup>2</sup>	<b>BEDROOM 3</b> 9'2" x 12'3" ft <sup>2</sup> 111.9 ft <sup>2</sup>	<b>STORAGE</b> 5'11" x 2'8" ft <sup>2</sup> 15.1 ft <sup>2</sup>	<b>LIVING &amp; DINING</b> 13'6" x 16'3" ft <sup>2</sup> 229.2 ft <sup>2</sup>	<b>BALCONY 1</b> 5'4" x 12'7" ft <sup>2</sup> 67.8 ft <sup>2</sup>
<b>EN SUITE</b> 7'7" x 5'1" ft <sup>2</sup> 33.4 ft <sup>2</sup>	<b>EN SUITE</b> 5'1" x 7'7" ft <sup>2</sup> 33.4 ft <sup>2</sup>	<b>BATHROOM</b> 6'3" x 8'9" ft <sup>2</sup> 51.6 ft <sup>2</sup>	<b>KITCHEN</b> 7'10" x 12'3" ft <sup>2</sup> 95.8 ft <sup>2</sup>	<b>TOTAL INTERNAL AREA</b> 1108.6 ft <sup>2</sup>	<b>BALCONY 2</b> 7'7" x 4'4" ft <sup>2</sup> 30.1 ft <sup>2</sup>



Floor plans and dimensions are taken from architectural drawings and could vary during construction. They are provided for guidance only. Total Area are provided as gross internal areas under the RICS measuring practice. Layouts are indicative only and are subject to change.

# APARTMENT 20

**BEDROOM**  
9'3" x 8'10" ft<sup>2</sup>  
104.4 ft<sup>2</sup>

**STORAGE**  
4'11" x 2'5" ft<sup>2</sup>  
11.8 ft<sup>2</sup>

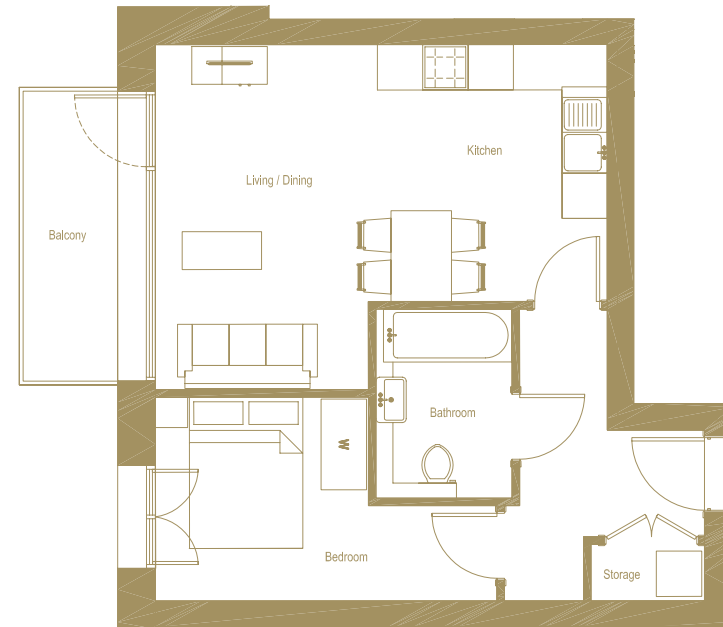
**LIVING & DINING**  
9'9" x 15'0" ft<sup>2</sup>  
179.8 ft<sup>2</sup>

**BALCONY**  
5'4" x 12'7" ft<sup>2</sup>  
67.8 ft<sup>2</sup>

**BATHROOM**  
5'11" x 8'2" ft<sup>2</sup>  
43.1 ft<sup>2</sup>

**KITCHEN**  
9'11" x 7'7" ft<sup>2</sup>  
74.3 ft<sup>2</sup>

**TOTAL INTERNAL AREA**  
503.7 ft<sup>2</sup>



# APARTMENT 21

**BEDROOM**  
18'2" x 9'0" ft<sup>2</sup>  
151.8 ft<sup>2</sup>

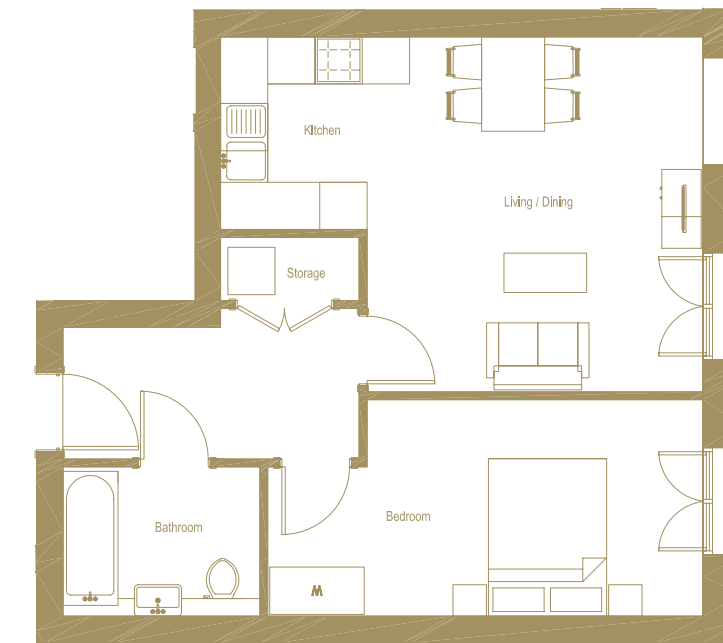
**STORAGE**  
5'9" x 2'7" ft<sup>2</sup>  
15.1 ft<sup>2</sup>

**LIVING & DINING**  
14'0" x 14'9" ft<sup>2</sup>  
200.2 ft<sup>2</sup>

**BATHROOM**  
8'2" x 6'3" ft<sup>2</sup>  
47.4 ft<sup>2</sup>

**KITCHEN**  
7'1" x 8'0" ft<sup>2</sup>  
56.0 ft<sup>2</sup>

**TOTAL INTERNAL AREA**  
564.0 ft<sup>2</sup>





# 3

**APARTMENT 22**  
**3 BEDROOM FLAT**

**APARTMENT 23**  
**3 BEDROOM FLAT**

**APARTMENT 24**  
**1 BEDROOM FLAT**

**APARTMENT 25**  
**1 BEDROOM FLAT**



Floor plans and dimensions are taken from architectural drawings and could vary during construction. They are provided for guidance only. Total Area are provided as gross internal areas under the RICS measuring practice. Layouts are indicative only and are subject to change.

# APARTMENT 22

**MASTER BEDROOM**  
12'2" x 12'7" ft<sup>2</sup>  
137.7 ft<sup>2</sup>

**BEDROOM**  
9'7" x 11'11" ft<sup>2</sup>  
148.5 ft<sup>2</sup>

**BEDROOM**  
12'2" x 8'7" ft<sup>2</sup>  
104.4 ft<sup>2</sup>

**STORAGE 1**  
2'7" x 2'5" ft<sup>2</sup>  
5.4 ft<sup>2</sup>

**KITCHEN**  
6'10" x 14'11" ft<sup>2</sup>  
95.8 ft<sup>2</sup>

**TOTAL INTERNAL AREA**  
1158.2 ft<sup>2</sup>

**EN SUITE**  
5'1" x 8'6" ft<sup>2</sup>  
37.7 ft<sup>2</sup>

**EN SUITE**  
5'1" x 8'2" ft<sup>2</sup>  
36.6 ft<sup>2</sup>

**BATHROOM**  
6'0" x 8'6" ft<sup>2</sup>  
47.4 ft<sup>2</sup>

**STORAGE 2**  
2'7" x 5'10" ft<sup>2</sup>  
15.1 ft<sup>2</sup>

**LIVING & DINING**  
23'6" x 14'1" ft<sup>2</sup>  
293.9 ft<sup>2</sup>

**BALCONY**  
12'7" x 4'1" ft<sup>2</sup>  
66.7 ft<sup>2</sup>



Floor plans and dimensions are taken from architectural drawings and could vary during construction. They are provided for guidance only. Total Area are provided as gross internal areas under the RICS measuring practice. Layouts are indicative only and are subject to change.

# APARTMENT 23

**MASTER BEDROOM**  
11'6" x 12'8" ft<sup>2</sup>  
186.2 ft<sup>2</sup>

**BEDROOM**  
8'11" x 10'2" ft<sup>2</sup>  
115.1 ft<sup>2</sup>

**BEDROOM**  
12'7" x 11'9" ft<sup>2</sup>  
147.5 ft<sup>2</sup>

**STORAGE**  
5'11" x 2'8" ft<sup>2</sup>  
15.1 ft<sup>2</sup>

**LIVING & DINING**  
18'8" x 12'4" ft<sup>2</sup>  
238.9 ft<sup>2</sup>

**BALCONY**  
4'1" x 12'7" ft<sup>2</sup>  
67.8 ft<sup>2</sup>

**EN SUITE**  
7'7" x 5'1" ft<sup>2</sup>  
33.4 ft<sup>2</sup>

**EN SUITE**  
5'1" x 7'7" ft<sup>2</sup>  
33.4 ft<sup>2</sup>

**BATHROOM**  
8'11" x 6'3" ft<sup>2</sup>  
51.6 ft<sup>2</sup>

**KITCHEN**  
11'10" x 3'11" ft<sup>2</sup>  
46.2 ft<sup>2</sup>

**TOTAL INTERNAL AREA**  
1108.6 ft<sup>2</sup>

**BALCONY**  
24'8" x 12'4" ft<sup>2</sup>  
317.5 ft<sup>2</sup>



Floor plans and dimensions are taken from architectural drawings and could vary during construction. They are provided for guidance only. Total Area are provided as gross internal areas under the RICS measuring practice. Layouts are indicative only and are subject to change.

# APARTMENT 24

**MASTER BEDROOM**  
9'3" x 8'10" ft<sup>2</sup>  
104.4 ft<sup>2</sup>

**STORAGE**  
4'11" x 2'6" ft<sup>2</sup>  
11.8 ft<sup>2</sup>

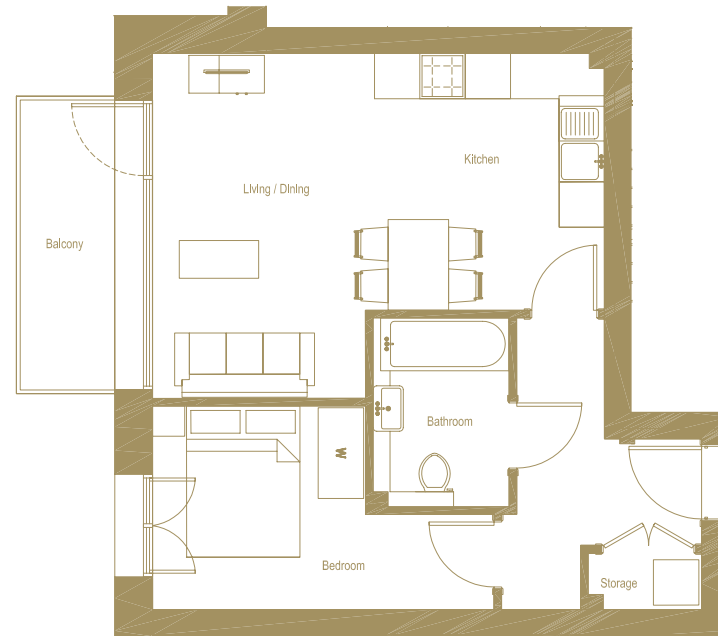
**LIVING & DINING**  
9'8" x 15'0" ft<sup>2</sup>  
178.7 ft<sup>2</sup>

**BALCONY**  
4'1" x 12'7" ft<sup>2</sup>  
67.8 ft<sup>2</sup>

**BATHROOM**  
5'11" x 8'2" ft<sup>2</sup>  
43.1 ft<sup>2</sup>

**KITCHEN**  
10'0" x 7'7" ft<sup>2</sup>  
75.3 ft<sup>2</sup>

**TOTAL INTERNAL AREA**  
503.7 ft<sup>2</sup>



# APARTMENT 25

**BEDROOM**  
18'2" x 9'0" ft<sup>2</sup>  
151.8 ft<sup>2</sup>

**STORAGE**  
5'9" x 2'7" ft<sup>2</sup>  
15.1 ft<sup>2</sup>

**LIVING & DINING**  
14'0" x 14'9" ft<sup>2</sup>  
200.2 ft<sup>2</sup>

**BATHROOM**  
8'2" x 6'3" ft<sup>2</sup>  
47.4 ft<sup>2</sup>

**KITCHEN**  
7'10" x 8'0" ft<sup>2</sup>  
56.0 ft<sup>2</sup>

**TOTAL INTERNAL AREA**  
564.0 ft<sup>2</sup>



# 4

**APARTMENT 26**  
**3 BEDROOM FLAT**

**APARTMENT 27**  
**3 BEDROOM FLAT**

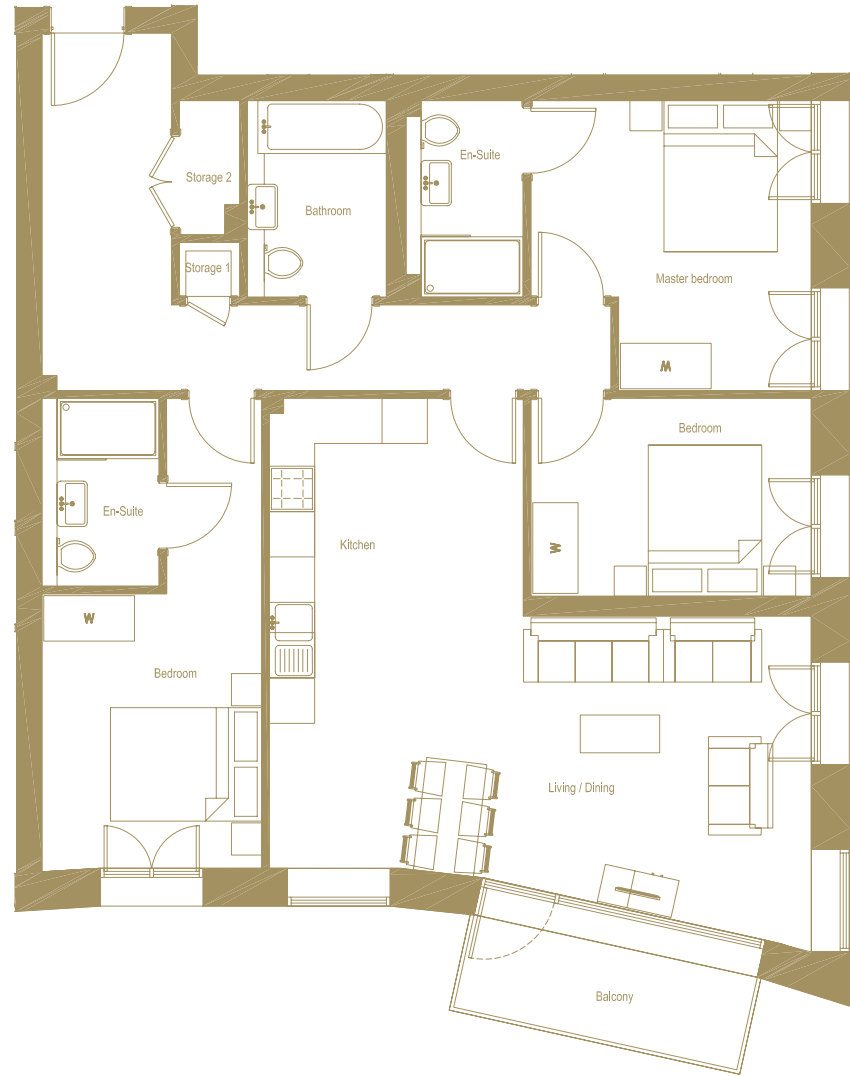
**APARTMENT 28**  
**1 BEDROOM FLAT**

**APARTMENT 29**  
**1 BEDROOM FLAT**



# APARTMENT 26

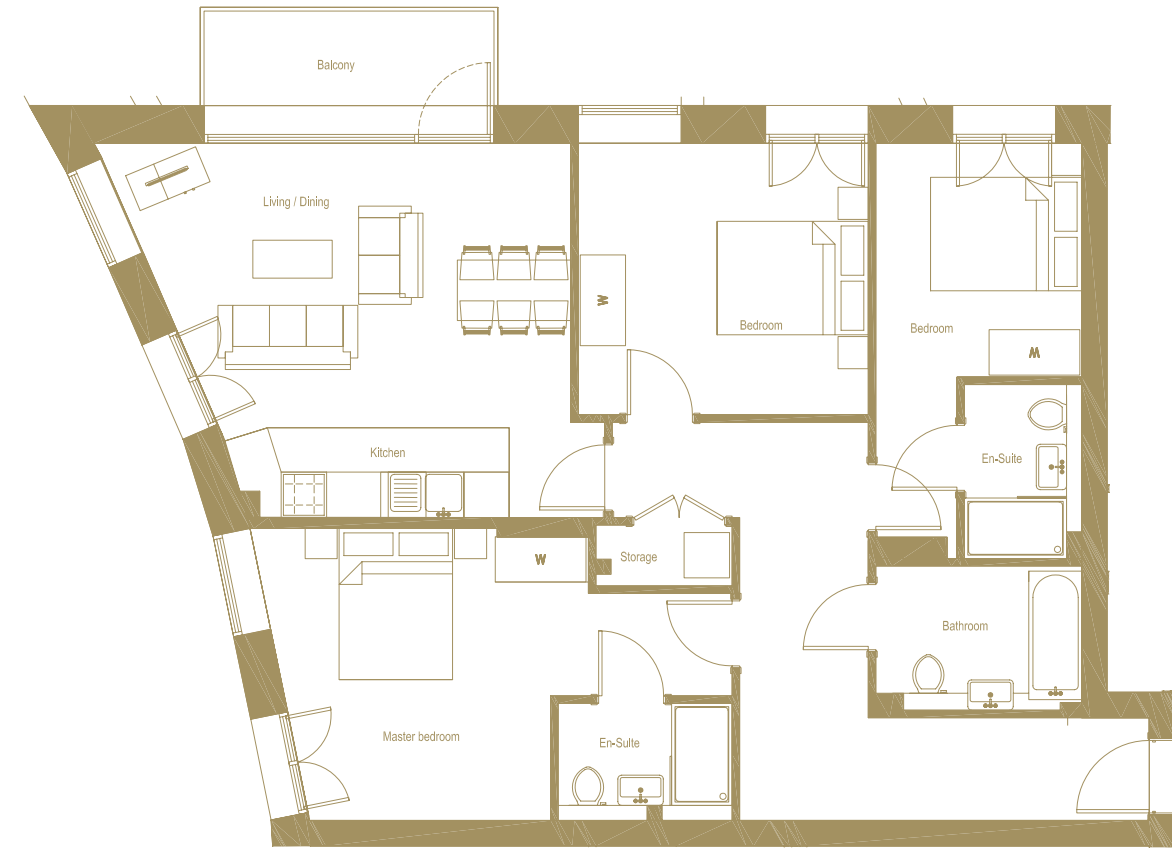
<b>BEDROOM 1</b> 12'2" x 12'7" ft <sup>2</sup> 137.7 ft <sup>2</sup>	<b>BEDROOM 2</b> 9'7" x 11'11" ft <sup>2</sup> 148.5 ft <sup>2</sup>	<b>BEDROOM 3</b> 12'2" x 8'7" ft <sup>2</sup> 104.4 ft <sup>2</sup>	<b>STORAGE 1</b> 2'7" x 2'5" ft <sup>2</sup> 5.4 ft <sup>2</sup>	<b>KITCHEN</b> 6'10" x 14'1" ft <sup>2</sup> 95.8 ft <sup>2</sup>	<b>TOTAL INTERNAL AREA</b> 1158.2 ft <sup>2</sup>
<b>EN SUITE</b> 5'1" x 8'6" ft <sup>2</sup> 37.7 ft <sup>2</sup>	<b>EN SUITE</b> 5'1" x 8'2" ft <sup>2</sup> 36.6 ft <sup>2</sup>	<b>BATHROOM</b> 6'0" x 8'6" ft <sup>2</sup> 47.4 ft <sup>2</sup>	<b>STORAGE 2</b> 5'10" x 2'7" ft <sup>2</sup> 15.1 ft <sup>2</sup>	<b>LIVING &amp; DINING</b> 23'6" x 12'10" ft <sup>2</sup> 293.9 ft <sup>2</sup>	<b>BALCONY</b> 12'7" x 5'4" ft <sup>2</sup> 66.7 ft <sup>2</sup>



Floor plans and dimensions are taken from architectural drawings and could vary during construction. They are provided for guidance only. Total Area are provided as gross internal areas under the RICS measuring practice. Layouts are indicative only and are subject to change.

# APARTMENT 27

<b>BEDROOM 1</b> 14'1" x 12'8" ft <sup>2</sup> 186.2 ft <sup>2</sup>	<b>BEDROOM 2</b> 8'11" x 10'2" ft <sup>2</sup> 115.1 ft <sup>2</sup>	<b>BEDROOM 3</b> 12'7" x 11'9" ft <sup>2</sup> 147.5 ft <sup>2</sup>	<b>STORAGE</b> 5'11" x 2'8" ft <sup>2</sup> 15.1 ft <sup>2</sup>	<b>LIVING &amp; DINING</b> 17'11" x 12'4" ft <sup>2</sup> 238.9 ft <sup>2</sup>	<b>TERRACE</b> 12'7" x 5'4" ft <sup>2</sup> 66.7 ft <sup>2</sup>
<b>EN SUITE</b> 7'7" x 5'1" ft <sup>2</sup> 33.4 ft <sup>2</sup>	<b>EN SUITE</b> 5'1" x 7'7" ft <sup>2</sup> 33.4 ft <sup>2</sup>	<b>BATHROOM</b> 8'11" x 6'3" ft <sup>2</sup> 51.6 ft <sup>2</sup>	<b>KITCHEN</b> 11'11" x 3'11" ft <sup>2</sup> 46.2 ft <sup>2</sup>	<b>TOTAL INTERNAL AREA</b> 1108.6 ft <sup>2</sup>	



Floor plans and dimensions are taken from architectural drawings and could vary during construction. They are provided for guidance only. Total Area are provided as gross internal areas under the RICS measuring practice. Layouts are indicative only and are subject to change.

# APARTMENT 28

## BEDROOM

14'10" x 8'10" ft<sup>2</sup>  
104.4 ft<sup>2</sup>

## STORAGE

4'11" x 2'6" ft<sup>2</sup>  
12.0 ft<sup>2</sup>

## LIVING & DINING

9'8" x 15'0" ft<sup>2</sup>  
178.6 ft<sup>2</sup>

## BALCONY

5'4" x 4'6" ft<sup>2</sup>  
18.2 ft<sup>2</sup>

## BATHROOM

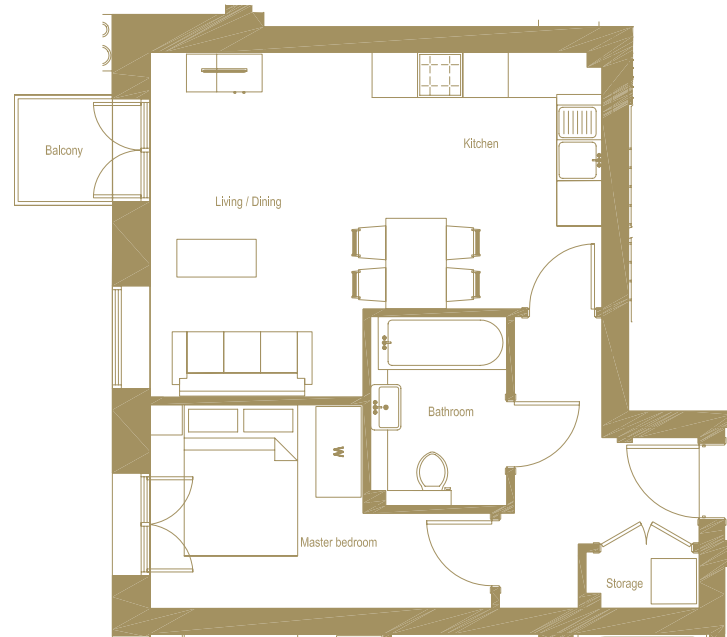
5'11" x 8'2" ft<sup>2</sup>  
48.3 ft<sup>2</sup>

## KITCHEN

10'0" x 7'7" ft<sup>2</sup>  
75.2 ft<sup>2</sup>

## TOTAL INTERNAL AREA

503.7 ft<sup>2</sup>



# APARTMENT 29

## BEDROOM

18'2" x 9'0" ft<sup>2</sup>  
151.8 ft<sup>2</sup>

## STORAGE

5'9" x 2'7" ft<sup>2</sup>  
15.1 ft<sup>2</sup>

## LIVING & DINING

15'3" x 14'10" ft<sup>2</sup>  
200.2 ft<sup>2</sup>

## BATHROOM

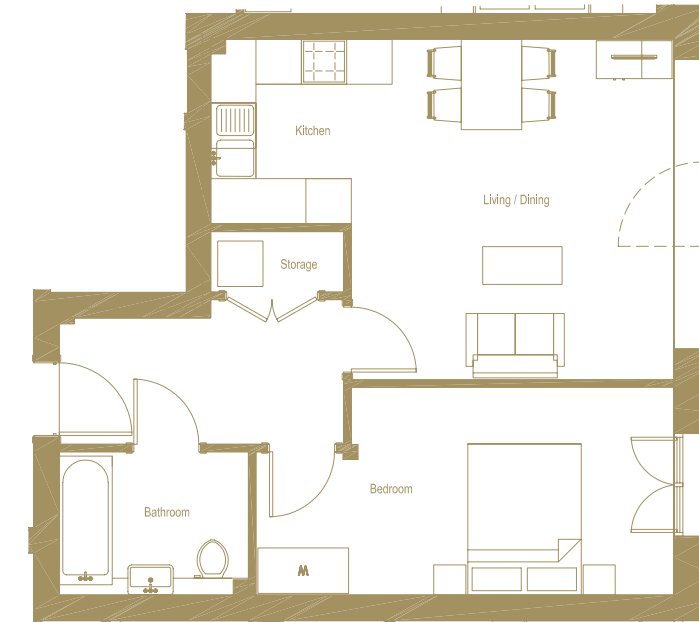
8'2" x 6'3" ft<sup>2</sup>  
47.4 ft<sup>2</sup>

## KITCHEN

7'0" x 8'0" ft<sup>2</sup>  
56.0 ft<sup>2</sup>

## TOTAL INTERNAL AREA

564.0 ft<sup>2</sup>



# 5

**APARTMENT 30**  
**2 BEDROOM FLAT**

**APARTMENT 31**  
**2 BEDROOM FLAT**

**APARTMENT 32**  
**2 BEDROOM FLAT**

**APARTMENT 33**  
**2 BEDROOM FLAT**

**APARTMENT 51**  
**3 BEDROOM FLAT**

**APARTMENT 52**  
**3 BEDROOM FLAT**



# APARTMENT 30

**MASTER BEDROOM**  
11'1" x 13'9" ft<sup>2</sup>  
141.0 ft<sup>2</sup>

**BEDROOM**  
10'4" x 14'11" ft<sup>2</sup>  
155.0 ft<sup>2</sup>

**STORAGE**  
2'7" x 5'11" ft<sup>2</sup>  
15.1 ft<sup>2</sup>

**LIVING & DINING**  
16'0" x 14'7" ft<sup>2</sup>  
239.0 ft<sup>2</sup>

**BALCONY**  
12'7" x 5'4" ft<sup>2</sup>  
66.7 ft<sup>2</sup>

**EN SUITE**  
7'7" x 5'11" ft<sup>2</sup>  
40.9 ft<sup>2</sup>

**BATHROOM**  
8'2" x 5'11" ft<sup>2</sup>  
44.1 ft<sup>2</sup>

**KITCHEN**  
6'9" x 12'6" ft<sup>2</sup>  
84.0 ft<sup>2</sup>

**TOTAL INTERNAL AREA**  
883.7 ft<sup>2</sup>



# APARTMENT 31

**BEDROOM 1**  
13'4" x 17'8" ft<sup>2</sup>  
163.6 ft<sup>2</sup>

**BEDROOM**  
16'0" x 9'4" ft<sup>2</sup>  
134.5 ft<sup>2</sup>

**STORAGE**  
2'7" x 7'6" ft<sup>2</sup>  
19.4 ft<sup>2</sup>

**LIVING & DINING**  
11'9" x 22'9" ft<sup>2</sup>  
269.1 ft<sup>2</sup>

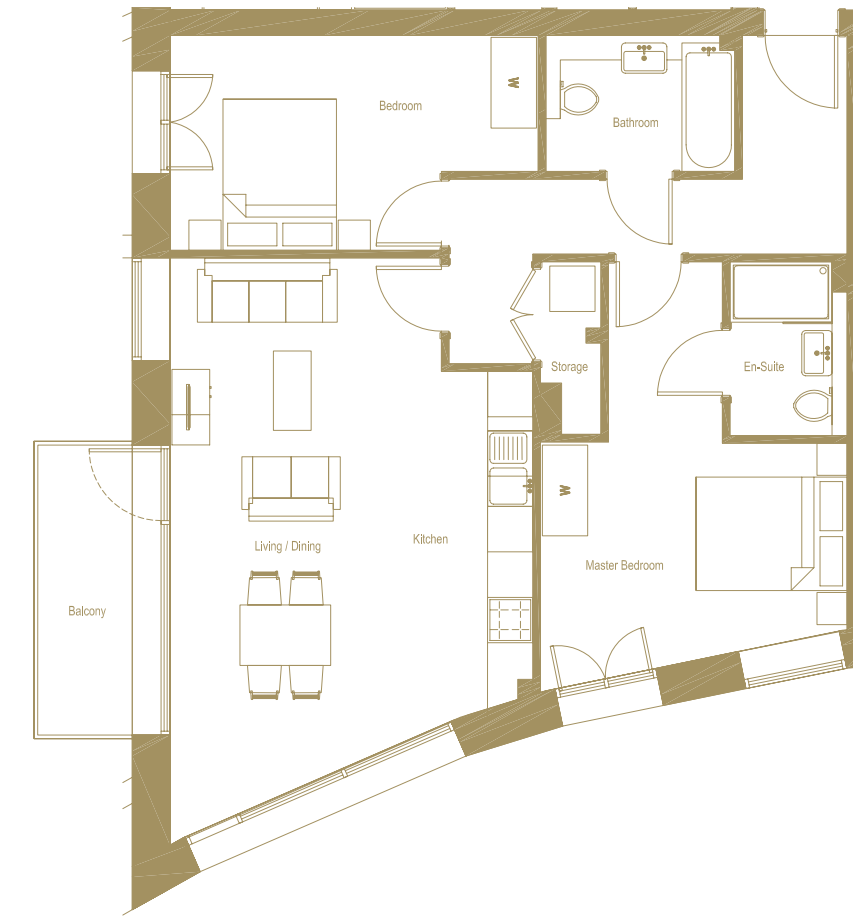
**BALCONY**  
5'4" x 12'7" ft<sup>2</sup>  
67.8 ft<sup>2</sup>

**EN SUITE**  
5'1" x 7'7" ft<sup>2</sup>  
33.4 ft<sup>2</sup>

**BATHROOM**  
8'2" x 5'11" ft<sup>2</sup>  
40.9 ft<sup>2</sup>

**KITCHEN**  
4'0" x 14'8" ft<sup>2</sup>  
58.1 ft<sup>2</sup>

**TOTAL INTERNAL AREA**  
868.6X ft<sup>2</sup>





# APARTMENT 32

**MASTER BEDROOM**  
12'0" x 8'10" ft<sup>2</sup>  
105.5 ft<sup>2</sup>

**BEDROOM**  
15'2" x 9'3" ft<sup>2</sup>  
132.4 ft<sup>2</sup>

**STORAGE 1**  
3'9" x 3'6" ft<sup>2</sup>  
12.9 ft<sup>2</sup>

**KITCHEN**  
11'7" x 6'1" ft<sup>2</sup>  
71.0 ft<sup>2</sup>

**TOTAL INTERNAL AREA**  
735.1 ft<sup>2</sup>

**EN SUITE**  
7'7" x 5'1" ft<sup>2</sup>  
33.4 ft<sup>2</sup>

**BATHROOM**  
8'2" x 5'7" ft<sup>2</sup>  
40.9 ft<sup>2</sup>

**STORAGE 2**  
2'2" x 2'6" ft<sup>2</sup>  
5.4 ft<sup>2</sup>

**LIVING DINING**  
19'7" x 13'2" ft<sup>2</sup>  
187.3 ft<sup>2</sup>

**BALCONY**  
5'4" x 4'6" ft<sup>2</sup>  
22.6 ft<sup>2</sup>



# APARTMENT 33

**MASTER BEDROOM**  
18'9" x 8'11" ft<sup>2</sup>  
157.1 ft<sup>2</sup>

**BEDROOM**  
13'4" x 8'10" ft<sup>2</sup>  
118.4 ft<sup>2</sup>

**STORAGE**  
2'7" x 5'1" ft<sup>2</sup>  
12.9 ft<sup>2</sup>

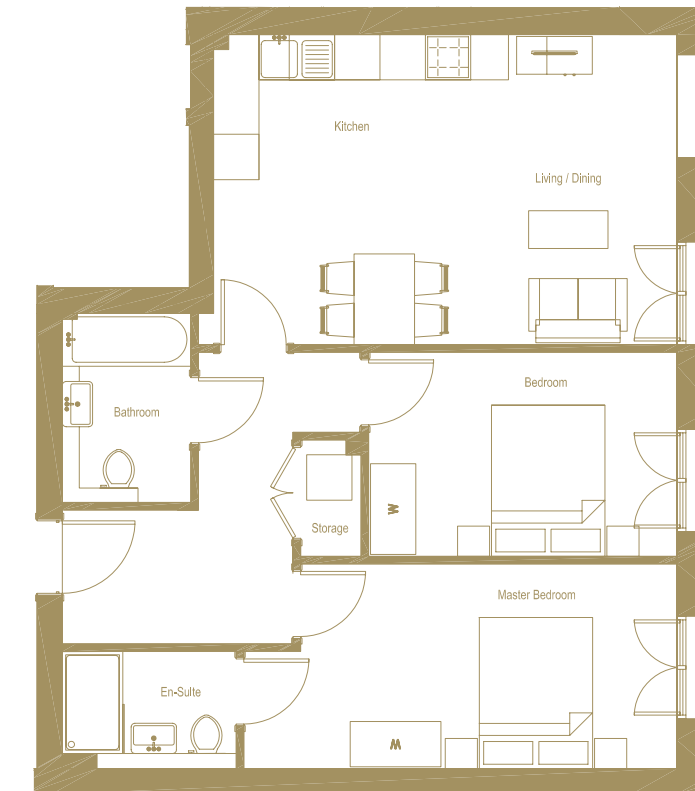
**LIVING & DINING**  
20'1" x 13'6" ft<sup>2</sup>  
190.5 ft<sup>2</sup>

**EN SUITE**  
7'7" x 5'1" ft<sup>2</sup>  
33.4 ft<sup>2</sup>

**BATHROOM**  
5'7" x 8'2" ft<sup>2</sup>  
40.9 ft<sup>2</sup>

**KITCHEN**  
12'10" x 6'4" ft<sup>2</sup>  
80.7 ft<sup>2</sup>

**TOTAL INTERNAL AREA**  
769.6 ft<sup>2</sup>



# APARTMENT 51

**MASTER BEDROOM**  
14'10" x 10'5" ft<sup>2</sup>  
178.6 ft<sup>2</sup>

**BEDROOM**  
14'10" x 10'5" ft<sup>2</sup>  
122.7 ft<sup>2</sup>

**BEDROOM**  
14'10" x 9'0" ft<sup>2</sup>  
122.7 ft<sup>2</sup>

**STORAGE 1**  
6'3" x 2'2" ft<sup>2</sup>  
12.9 ft<sup>2</sup>

**LIVING & DINING**  
21'8" x 13'1" ft<sup>2</sup>  
296.1 ft<sup>2</sup>

**BALCONY**  
5'4" x 3'9" ft<sup>2</sup>  
19.4 ft<sup>2</sup>

**EN SUITE**  
7'7" x 5'1" ft<sup>2</sup>  
33.3 ft<sup>2</sup>

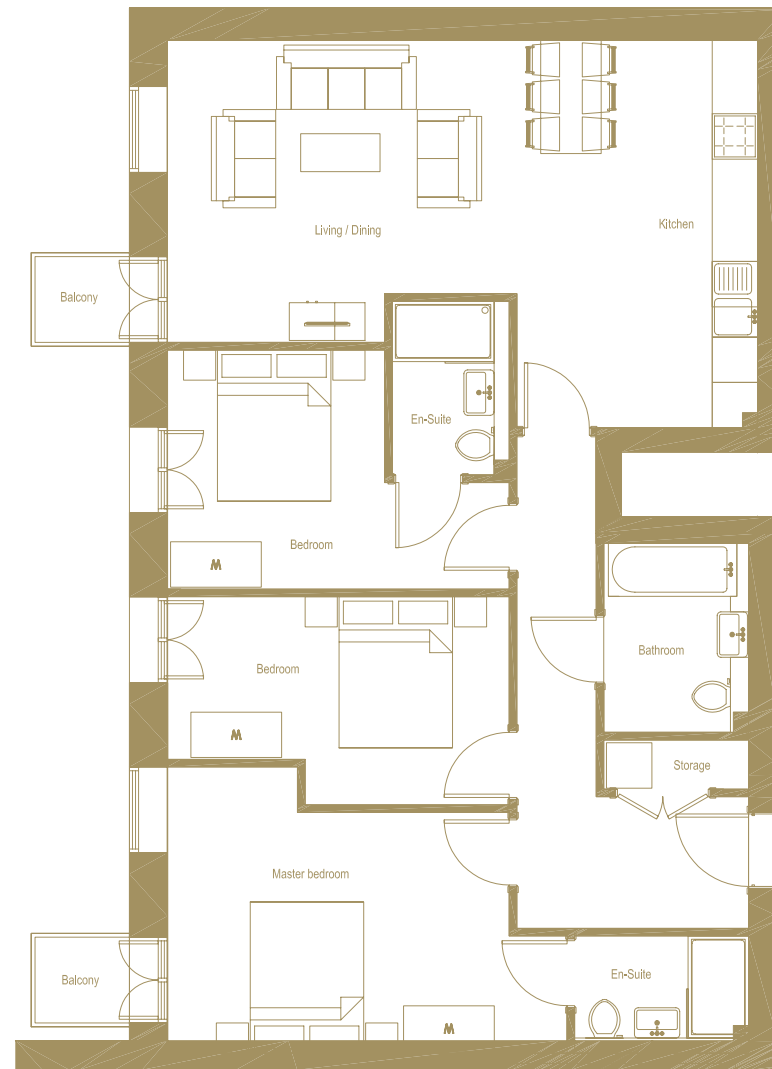
**EN SUITE**  
5'1" x 7'7" ft<sup>2</sup>  
33.3 ft<sup>2</sup>

**BATHROOM**  
6'3" x 8'2" ft<sup>2</sup>  
46.3 ft<sup>2</sup>

**KITCHEN**  
3'11" x 16'10" ft<sup>2</sup>  
66.7 ft<sup>2</sup>

**TOTAL INTERNAL AREA**  
1081.7 ft<sup>2</sup>

**BALCONY**  
5'4" x 3'9" ft<sup>2</sup>  
19.4 ft<sup>2</sup>



# APARTMENT 52

**MASTER BEDROOM**  
18'9" x 10'11" ft<sup>2</sup>  
165.7 ft<sup>2</sup>

**BEDROOM**  
10'11" x 9'11" ft<sup>2</sup>  
142.1 ft<sup>2</sup>

**BEDROOM**  
17'9" x 9'0" ft<sup>2</sup>  
157.1 ft<sup>2</sup>

**STORAGE**  
6'1" x 3'2" ft<sup>2</sup>  
19.4 ft<sup>2</sup>

**LIVING & DINING**  
22'3" x 13'1" ft<sup>2</sup>  
291.7 ft<sup>2</sup>

**BALCONY**  
7'8" x 43'2" ft<sup>2</sup>  
277.7 ft<sup>2</sup>

**EN SUITE**  
7'7" x 5'1" ft<sup>2</sup>  
33.3 ft<sup>2</sup>

**EN SUITE**  
7'7" x 5'1" ft<sup>2</sup>  
33.3 ft<sup>2</sup>

**BATHROOM**  
6'0" x 8'2" ft<sup>2</sup>  
45.2 ft<sup>2</sup>

**KITCHEN**  
7'6" x 12'8" ft<sup>2</sup>  
94.7 ft<sup>2</sup>

**TOTAL INTERNAL AREA**  
1158.2 ft<sup>2</sup>





**APARTMENT 34**  
**2 BEDROOM FLAT**

**APARTMENT 35**  
**2 BEDROOM FLAT**

**APARTMENT 36**  
**2 BEDROOM FLAT**

**APARTMENT 37**  
**2 BEDROOM FLAT**



Floor plans and dimensions are taken from architectural drawings and could vary during construction. They are provided for guidance only. Total Area are provided as gross internal areas under the RICS measuring practice. Layouts are indicative only and are subject to change.

# APARTMENT 34

**MASTER BEDROOM**  
11'1" x 13'9" ft<sup>2</sup>  
141.0 ft<sup>2</sup>

**BEDROOM**  
10'4" x 14'11" ft<sup>2</sup>  
155.0 ft<sup>2</sup>

**STORAGE**  
2'7" x 5'11" ft<sup>2</sup>  
15.1 ft<sup>2</sup>

**LIVING & DINING**  
16'0" x 14'2" ft<sup>2</sup>  
239.0 ft<sup>2</sup>

**BALCONY**  
12'7" x 5'4" ft<sup>2</sup>  
66.7 ft<sup>2</sup>

**EN SUITE**  
7'7" x 5'11" ft<sup>2</sup>  
40.9 ft<sup>2</sup>

**BATHROOM**  
8'2" x 5'11" ft<sup>2</sup>  
44.1 ft<sup>2</sup>

**KITCHEN**  
6'9" x 12'6" ft<sup>2</sup>  
84.0 ft<sup>2</sup>

**TOTAL INTERNAL AREA**  
883.7 ft<sup>2</sup>



# APARTMENT 35

**BEDROOM 1**  
13'4" x 9'2" ft<sup>2</sup>  
163.6 ft<sup>2</sup>

**BEDROOM 2**  
16'0" x 9'4" ft<sup>2</sup>  
134.5 ft<sup>2</sup>

**STORAGE**  
2'7" x 7'6" ft<sup>2</sup>  
19.4 ft<sup>2</sup>

**LIVING DINING**  
11'9" x 22'10" ft<sup>2</sup>  
269.1 ft<sup>2</sup>

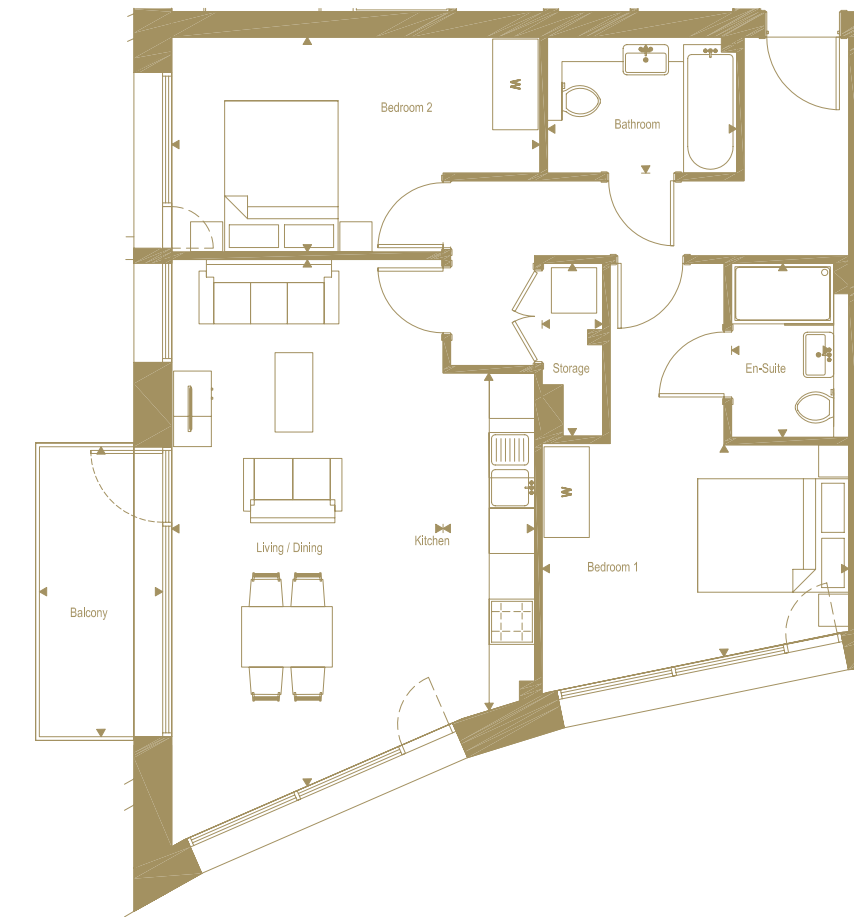
**BALCONY**  
5'6" x 12'7" ft<sup>2</sup>  
67.8 ft<sup>2</sup>

**EN SUITE**  
4'5" x 7'7" ft<sup>2</sup>  
33.4 ft<sup>2</sup>

**BATHROOM**  
8'2" x 5'7" ft<sup>2</sup>  
40.9 ft<sup>2</sup>

**KITCHEN**  
4'0" x 14'8" ft<sup>2</sup>  
58.1 ft<sup>2</sup>

**TOTAL INTERNAL AREA**  
868.6 ft<sup>2</sup>



# APARTMENT 36

**BEDROOM 1**  
12'0" x 8'10" ft<sup>2</sup>  
105.5 ft<sup>2</sup>

**BEDROOM 2**  
15'2" x 9'3" ft<sup>2</sup>  
132.4 ft<sup>2</sup>

**STORAGE 1**  
3'9" x 3'6" ft<sup>2</sup>  
12.9 ft<sup>2</sup>

**KITCHEN**  
11'7" x 6'1" ft<sup>2</sup>  
71.0 ft<sup>2</sup>

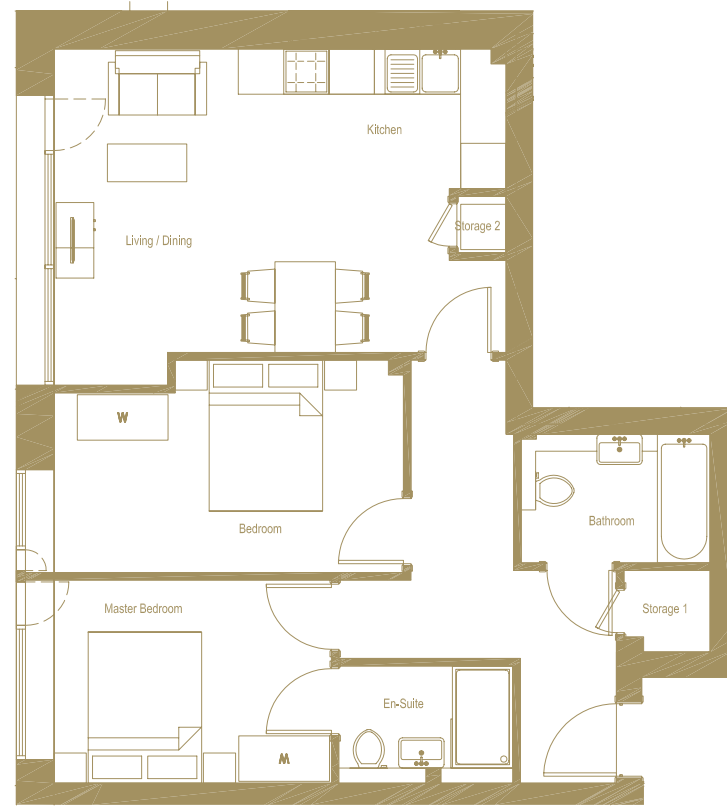
**TOTAL INTERNAL AREA**  
735.1 ft<sup>2</sup>

**EN SUITE**  
7'7" x 4'5" ft<sup>2</sup>  
33.4 ft<sup>2</sup>

**BATHROOM**  
8'2" x 5'7" ft<sup>2</sup>  
40.9 ft<sup>2</sup>

**STORAGE 2**  
2'2" x 2'6" ft<sup>2</sup>  
5.4 ft<sup>2</sup>

**LIVING & DINING**  
19'7" x 14'7" ft<sup>2</sup>  
187.3 ft<sup>2</sup>



# APARTMENT 37

**BEDROOM 1**  
16'4" x 8'11" ft<sup>2</sup>  
157.1 ft<sup>2</sup>

**BEDROOM 2**  
13'6" x 8'10" ft<sup>2</sup>  
118.4 ft<sup>2</sup>

**STORAGE**  
2'7" x 5'1" ft<sup>2</sup>  
12.9 ft<sup>2</sup>

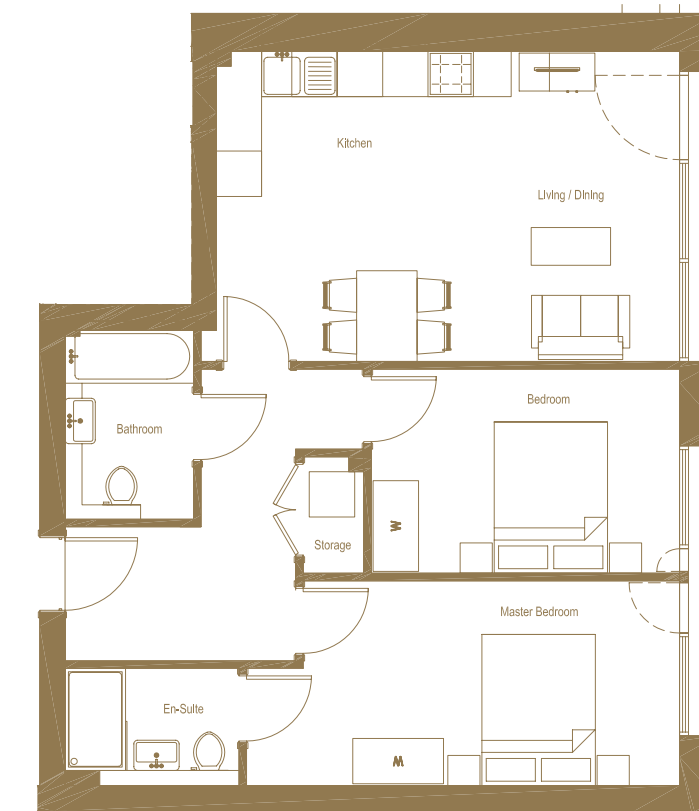
**LIVING & DINING**  
20'1" x 13'6" ft<sup>2</sup>  
190.5 ft<sup>2</sup>

**EN SUITE**  
7'7" x 5'1" ft<sup>2</sup>  
33.4 ft<sup>2</sup>

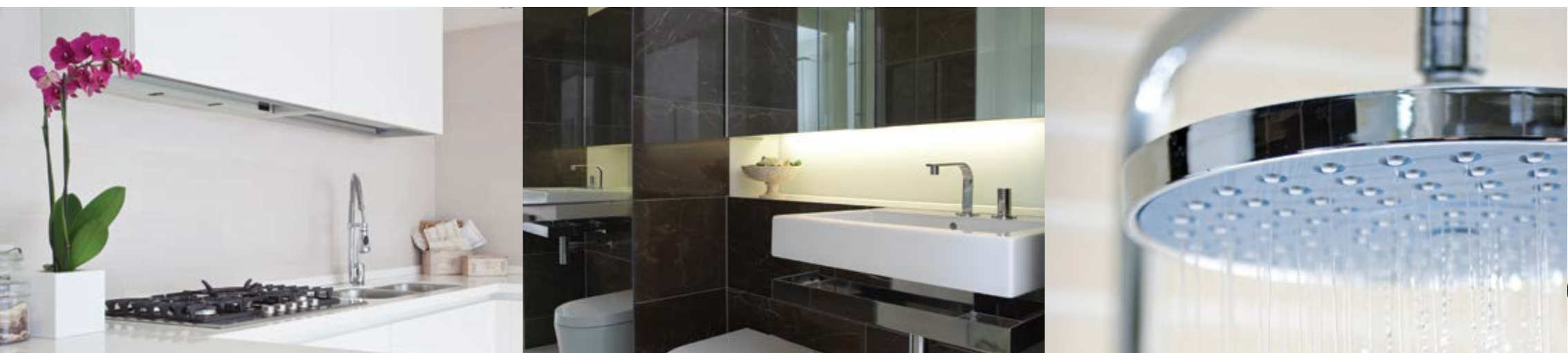
**BATHROOM**  
5'7" x 8'2" ft<sup>2</sup>  
40.9 ft<sup>2</sup>

**KITCHEN**  
12'10" x 6'4" ft<sup>2</sup>  
80.7 ft<sup>2</sup>

**TOTAL INTERNAL AREA**  
769.6 ft<sup>2</sup>



# INTERIORS FINISHED TO THE HIGHEST SPECIFICATION



## General

- Under floor heating
- Brushed chrome switch and socket plates (in visible locations only)
- Downlighters to all rooms
- Video door entry system
- BT points to lounge/dining, kitchen and bedroom 1, 2 & 3
- TV points including SKY+ HD to lounge/dining, kitchen and bedroom 1, 2 & 3
- Communal satellite dish (customer subscription required)
- Veneer interior doors
- Chrome door furniture
- Choice of Oak or Walnut hardwood floor to hallway, reception & kitchen
- Carpet to all bedrooms
- Walls & ceiling finished in white emulsion
- Timber decking to balconies with glass balustrade
- PC concrete slab paving to terraces

## Kitchens

- Bespoke kitchen and glass splash back (silestone worktops and splash backs available as an optional extra)
- Integrated appliances: including stainless steel oven, 4 and 5 ring hobs, extractor hood, microwave combination oven and integrated fridge/freezer, dishwasher & washer/dryer (to hallway cupboards)
- Handle-less cupboards
- ECO bins
- Low energy under unit lighting
- Integrated wine cooler and warming drawers available as optional extra

## Bedroom

- Integrated wardrobes with mirrored sliding doors (Wardrobes are included to Master Bedroom only - other bedrooms an optional extra)
- Chrome hanging rail and integrated shelving system to wardrobes

## Bathroom

- High quality sanitaryware
- High quality shower set and taps
- High quality floor and wall tiles
- Wall hung mirrored vanity unit with under mounted lighting

## Communal areas

- Key fob entry system from ground floor lobby
- Concierge desk
- 2x 13 person lift
- Generous bicycle storage
- Timer controlled lighting to external areas



# ANOTHER LUXURY DEVELOPMENT FROM TAYLOR WIMPEY

Taylor Wimpey Central London delivers exclusive, lifestyle-led new build developments for those who want to be in central London but who don't necessarily want to live in a high-rise tower. Our aim is to meet the needs of London's busy professionals through the creation of homes that reflect the lives they lead either as families, couples or individuals.

This means delivering an aspirational product in locations that offer a strong mix of retail and leisure with easy access to all parts of the Capital.

**Taylor  
Wimpey**  
Central London



THE MILL APARTMENTS WEST HAMPSTEAD

Photograph from The Mill apartments show apartment



MULBERRY MEWS ISLINGTON



MULBERRY MEWS ISLINGTON

