



This stunning new-build on the south coast benefits from modern, minimalist interiors and sensational lighting throughout

Words: **Felicity Borthwick** Photography: **Oliver Gordon**

With magnificent views across the Solent and surrounding countryside, it's not hard to see why Joe and Anna Burke chose this site for their family home. The house needed remodelling, but the pair welcomed a project as, with Anna's flair for design and Joe's talents as a lighting designer, they knew they could create something special.

Once they had explored all the costs and planning restrictions, however, they decided it would be easier just to rebuild and create exactly what they wanted. The result is a stunning, modern, eco-friendly home with swathes of glass that drink in the light and views. "We designed the floor plan so that all key rooms have the same outlook – over the fields to the sea – across all three floors," says Anna.

One such area is the kitchen – a contemporary Poggenpohl design that sits within a vast, L-shaped living-dining space, with sliding glass doors onto the garden. The couple wanted their kitchen to be light and bright with clean lines, so opted for white, handleless, glass-fronted units with contrasting doors in a vertical-grain ash veneer. The worktops, meanwhile, are Lava Rock Corian with an integrated sink in the same finish for a sleek, uniform look.

For the layout, the Burkes wanted as much of the work area facing the views as possible. Hence, the large L-shaped island, which incorporates a flush-fitting hob and breakfast bar. "We had a difference of opinion in whether or not to have the sink on the island, but in the end we placed it on the opposite run, which we're very pleased with as there's nothing worse than a cluttered island full of dishes," says Anna.

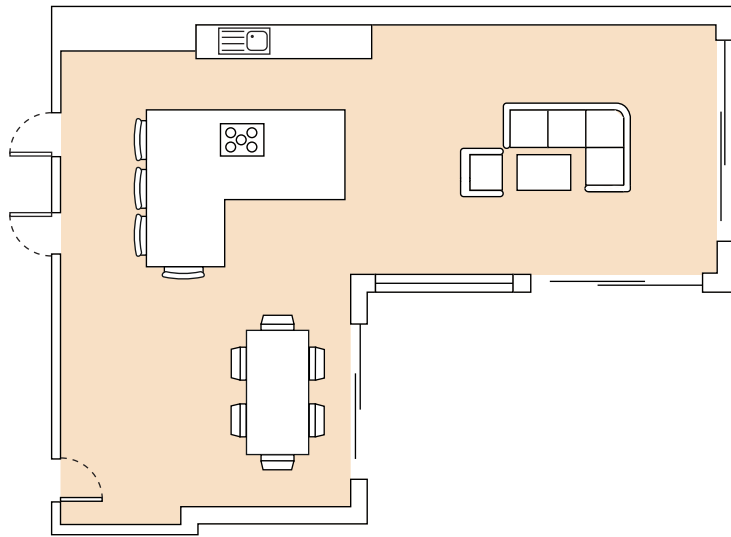
After the views, the most striking feature in here is a huge white, sculptural pendant light that hangs above the island. At some two metres long, it makes a fantastic statement piece within such a vast, open space and was sourced from Joe's own company – Joe Burke Lighting Design.

The bedroom and bathroom on the top floor were originally designed to be the master suite, but the couple decided to use one of the bedrooms on the first floor so they could be on the same level as the children. However, like the space upstairs, it still features a balcony and an adjoining dressing room and bathroom. Moreover, as with the kitchen, the couple have created an elegant, minimalist design that allows the views to permeate the room. ▶

Left: A dramatic pendant light from homeowner Joe's lighting company, has been suspended above the island, accentuating the high ceiling. The kitchen layout, meanwhile, was designed to maximise views of the sea and surrounding fields.

divine  
illumination





A simple storage bed from The White Company is beautifully dressed in crisp white linen, with a couple of taupe cushions and wooden-block bedside tables for warmth. White shutters add to the fresh, light feel and allow the couple to control how much daylight they let in, without hiding the window frames.

A short way along the landing is their eldest daughter Olivia's bedroom, which benefits from a similar light, airy feel. "We wanted a pretty, fun, girly room but without introducing too many strong colours, so we opted for softer pastel tones," explains Anna. "The angel wing rug and Miffy light add some nice touches and, because it's a large space, we bought a trundle bed so Olivia can enjoy having friends to stay over."

Despite the couple deciding to use the bedroom on the first floor, this hasn't stopped them from creating a beautiful bathroom at the top of the house for the whole family to enjoy. Like the master ensuite, it features a lovely freestanding bath from Victoria + Albert Baths and the room is clad in Minoli porcelain tiles. "We have used Minoli tiles throughout as they are of a high quality, but we varied the colour in each bathroom," explains Anna. "We then used tiny mosaics for the lit niches inside the showers and slightly larger mosaics for the niches elsewhere."

The remaining fixtures and fittings in this bathroom are of a similar high quality: brassware from Albion, sanitaryware by Duravit and a shower from Merlyn. The striking Monaco bath, meanwhile, was chosen to complement the curves on the basins and shower, creating soft, relaxing lines that are picked up by the brassware and light fittings.

The entire house enjoys luxurious finishes and stylish furniture, but it wouldn't be the success it is without such carefully considered lighting. The kitchen area, for example, features a mix of downlighters, spotlights, decorative fixtures and accent lighting and each fixture can be controlled separately. "This space is used not just for cooking but for dining, relaxing and socialising and each use requires different lighting," explains Joe. "To me, lighting is the most important element. We buy things like paintings and wallcoverings because we like to look at them and lighting should be used in the same way, with the room as a canvas and the light as our paint!" [KBB](#)

The couple knew from the outset that they wanted white base units with a taller wooden bank for contrast but were undecided on which kitchen company to use. However, as soon as they saw this cabinetry in the showroom, their mind was made up. "You can tell straight away that Poggenpohl's kitchens are high-quality just by opening and closing the doors, plus we really liked the way the glass-fronted units reflect the light," recalls Anna.





**Above:** "The kitchen is part of a large day room which has a fantastic entertaining area so we wanted to create a big, practical kitchen but still with plenty of space around it," says Anna.

**Right:** A downdraft extractor has been incorporated into the island so it sits flush with the worktop when not in use, maintaining the kitchen's sleek, streamlined look.

**Opposite page:** Kitchen storage has been maximised by including large drawers on both sides of the island and a corner unit that allows easy access to its contents, even items stored right at the back.







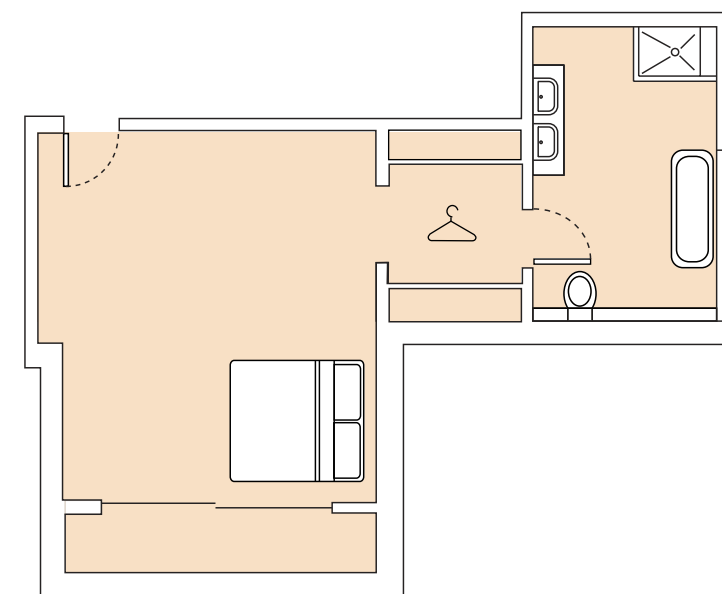
**Opposite page, top:** The couple wanted to make the master bedroom fairly neutral and minimal so that it doesn't detract from the view. Storage was also key so they opted for a bed from The White Company with storage drawers and built-in wardrobes between the bedroom and ensuite.

**Bottom left:** Hansgrohe brassware has been used in the master ensuite for a contemporary feel.

**Bottom right:** "We love the straight-lined shape of the bath, and the waterfall spout coming out of the wall adds something special," says Anna.

**Right:** The master ensuite features a floating two-drawer vanity with countertop Duravit basins and wall lights either side of the mirrors.

**Bottom right:** The couple wanted their ensuite to be luxurious, calming and spacious. The walk-in shower and sculptural Ravello bath add a real sense of style, while large-format tiles, simple, modern brassware and a frameless shower screen combine to create a feeling of calm.



"We love the straight-lined shape of the bath, and the waterfall spout coming out of the wall adds something special."



**Right:** Rather than paint their daughter's room in bright colours, the Burkes have kept it lovely and fresh in white but with pretty pastel accents introduced through furniture and bed linen. "The Oliver Scandinavian furniture was supplied by Nubie and I'm really pleased with it as it has a quality look and Olivia won't grow out of it any time soon," says Anna.

**Opposite page, top:** The Monaco bath by Victoria + Albert Baths was chosen to complement the curved shower and basins, while elegant Minoli tiles envelop the floor and walls.

**Bottom left:** Echoing the master ensuite, the family bathroom at the top of the house features a two-drawer vanity unit to hide toiletries away, with Duravit countertop basins and Albion brassware.

**Bottom right:** The Series 10 Merlyn shower occupies the corner of the family bathroom, with sleek wall-mounted brassware and a storage niche used to enhance its clean, contemporary look.



## SourceBook

### DESIGN

**Lighting design, specification and supply** Joe Burke Lighting Design (07970 661342 or [www.joeburkelightingdesign.co.uk](http://www.joeburkelightingdesign.co.uk))

### KITCHEN/LIVING/DINING AREA

**Cabinetry** Poggenpohl +Segmento range, with Polar White glass-fronted doors and Natural Core Ash veneer, Searle & Taylor (01962 850300 or [www.searle-taylor.co.uk](http://www.searle-taylor.co.uk))

**Worktops and sink** Lava Rock, Corian ([www.corian.co.uk](http://www.corian.co.uk)), sourced through Searle & Taylor, as before

**Appliances** Induction hob, fridge-freezer and dishwasher, Siemens (0344 892 8999 or [www.siemens-home.co.uk](http://www.siemens-home.co.uk)); Extractor, Caple (0117 938 1900 or [www.caple.co.uk](http://www.caple.co.uk)); Combi-microwave oven, single oven and warming drawer, Gaggenau (0844 892 8988 or [www.gaggenau.com/gb](http://www.gaggenau.com/gb))

**Tap** Kubus tap, Franke (0161 436 6280 or [www.franke.com](http://www.franke.com)); Boiling-water tap, Quooker (0808 102 0677 or [www.quooker.co.uk](http://www.quooker.co.uk))

**Flooring** Porcelain tiles from Minoli (01865 778225 or [www.minoli.co.uk](http://www.minoli.co.uk))

**Barstools** Ikea (020 3645 0000 or [www.ikea.com/gb](http://www.ikea.com/gb))

**Pendant light** Joe Burke Lighting Design, as before

**Sofa, armchair and coffee table** Natuzzi (01322 771442 or [www.natuzzi.co.uk](http://www.natuzzi.co.uk))

**Dining table and chairs** Willow (01590 670000 or [www.willowlifestyle.com](http://www.willowlifestyle.com))

### MASTER BEDROOM

**Bed** The White Company (020 3758 9222 or [www.thewhitecompany.com](http://www.thewhitecompany.com))

**Bedside table** Offcuts of an oak beam. For similar try French Connection ([www.frenchconnection.com](http://www.frenchconnection.com))

**Bed linen** John Lewis (0345 604 9049 or [www.johnlewis.com](http://www.johnlewis.com))

**Carpet** For similar try Blenheim Carpets (020 7823 3040 or [www.blenheim-carpets.com](http://www.blenheim-carpets.com))

**Wall lights** Joe Burke Lighting Design, as before

**Shutters** Shading Places (023 8110 3155 or [www.shadingplaces.co.uk](http://www.shadingplaces.co.uk))

### MASTER ENSUITE

**Bath** Ravello, Victoria + Albert Baths (020 7351 4378 or [www.vandabaths.com](http://www.vandabaths.com))

**Tiles** Minoli, as before

**Shower screen** Bespoke. For similar try Majestic (0844 800 1500 or [www.majesticshowers.com](http://www.majesticshowers.com))

**Mirrors** For similar try Homebase (0845 077 8888 or [www.homebase.co.uk](http://www.homebase.co.uk))

**Wall lights** Joe Burke Lighting Design, as before

**Brassware** Hansgrohe (01372 472001 or [www.hansgrohe.co.uk](http://www.hansgrohe.co.uk))

**Basins and vanity unit** Duravit (0845 500 7787 or [www.duravit.co.uk](http://www.duravit.co.uk))

### FAMILY BATHROOM

**Bath** Monaco, Victoria + Albert Baths, as before

**Tiles** Minoli, as before

**Vanity unit and basins** Duravit, as before

**Mirrors** For similar try Homebase, as before

**Wall lights** Joe Burke Lighting Design, as before

**Shower enclosure** Merlyn (+353 567791555 or [www.merlynshowering.com](http://www.merlynshowering.com))

**Brassware** Albion (01255 831605 or [www.albionbathco.com](http://www.albionbathco.com))

### DAUGHTER'S BEDROOM

**Bed and rug** Nubie (01825 724160 or [www.nubie.co.uk](http://www.nubie.co.uk))

**Bed linen** Home Candy (0800 298 4150 or [www.homecandy.com](http://www.homecandy.com))

**Stool** Smallable (020 3318 3406 or [www.en.smallable.com](http://www.en.smallable.com))

**Shelving unit** Great Little Trading Co (0344 848 6000 or [www.gltc.co.uk](http://www.gltc.co.uk))

### COST

Poggenpohl kitchens start from around £30,000 and a similar ensuite would cost around £20,000

