



EDWARDS
ESTATE AGENTS

2 Bristol & West House, Post Office Road
BOURNEMOUTH, Dorset, BH1 1BL

2 Bristol & West House,
Post Office Road
BOURNEMOUTH, Dorset,
BH1 1BL

Asking Price Of
£199,950

- Remarkable New Apartment In Iconic Town Centre Building
- Fabulous High Quality Fully Fitted Kitchen
- Integrated Smeg Appliances & U/Floor Heating
- Incredible Specification Throughout
- Wonderful & Incredibly Stylish Open Plan Design
- Large Bedroom & Built-In Wardrobe
- Contemporary Style Bathroom
- HD Video Entry System & Lift

W: www.edwardestates.com



An outstanding and incredibly spacious first floor apartment with urban views in the very heart of Bournemouth Town Centre that has been thoughtfully created and built to a fantastic specification.

Bristol & West House is probably one of Bournemouth's most recognised buildings, commanding an elevated position on Richmond Hill with views down into Bournemouth's bustling Square.

This stunning development will offer a choice of 38 one and two bedroom apartments including beautiful penthouses with private terraces and outstanding sea and town centre views, all finished to exacting standards with lovely bright and spacious open plan kitchen/dining/day rooms.

A modern fusion of clean, contemporary style and classic Art Deco elegance was the remit of the developers from the start. Their plan; to carefully restore the exterior to its former glory and create a cool stylish interior, something they have successfully achieved.

From the stylish entrance foyer with its original terrazzo flooring and lift, you step out into the heart of Bournemouth's cosmopolitan town centre with its eclectic mix of shops, bars and restaurants and beautiful award winning ornamental gardens. Just an 800 metre walk through the historic gardens is the award winning golden sandy bathing beach and crystal blue seas our beautiful town is famous for.

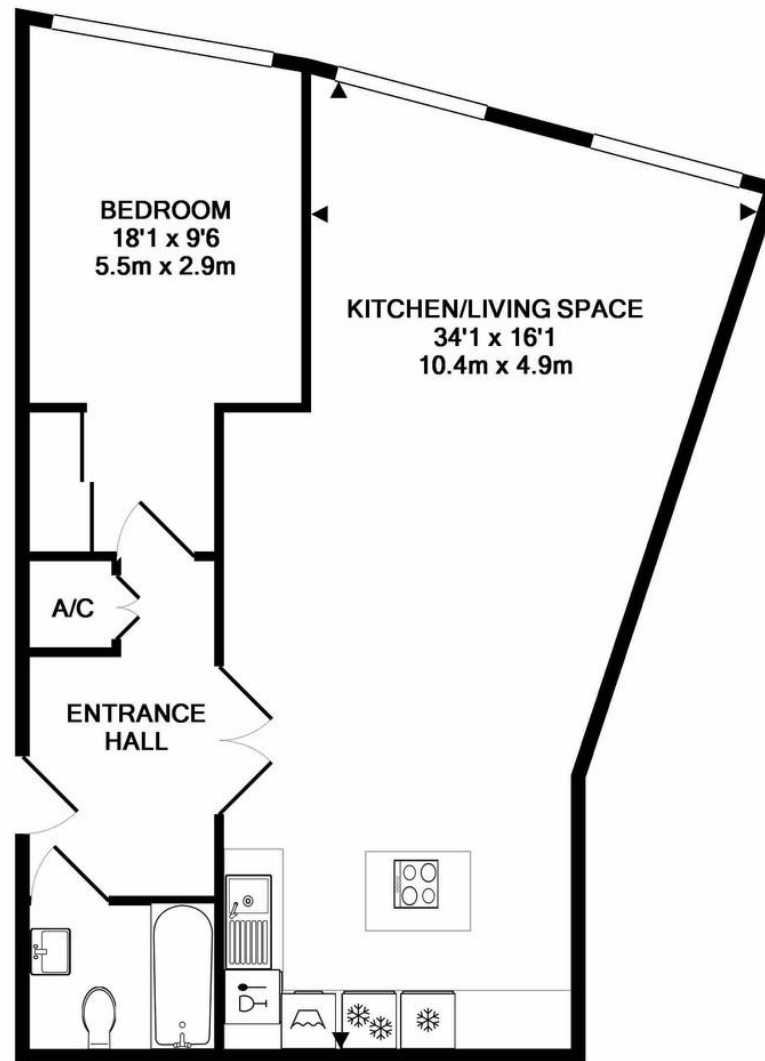
With a real focus on finish, the apartments at Bristol & West will offer a modern environment from which to enjoy and explore the exciting town and stunning coast.

Open plan living spaces made for entertaining blend into superbly appointed kitchens with quartz worktops and integrated Smeg appliances. Luxuriously appointed bathrooms and en-suites are fully tiled and are designed for

taking your time.

Engineered wood flooring flows throughout the living areas and the feature windows of the apartments emulate the Art Deco ambience. Underfloor heating and high quality lighting throughout embodies the indulgent feel of the apartments.





TOTAL APPROX. FLOOR AREA 686 SQ.FT. (63.7 SQ.M.)

Whilst every attempt has been made to ensure the accuracy of the floor plan contained here, measurements of doors, windows, rooms and any other items are approximate and no responsibility is taken for any error, omission, or mis-statement. This plan is for illustrative purposes only and should be used as such by any prospective purchaser. The services, systems and appliances shown have not been tested and no guarantee as to their operability or efficiency can be given

Made with Metropix ©2016



PROPERTY MISDESCRIPTIONS ACT 1991: The Agent has not tested any apparatus, equipment, fixtures and fittings, or services, so cannot verify that they are in working order or fit for the purpose. The buyer is advised to obtain verification from his or her Professional Buyer. References to the Tenure of the property are based on information supplied by the Vendor. The agents have not had sight of the title documents. The buyer is advised to obtain verification from their Solicitor. You are advised to check the availability of any property before travelling any distance to view.