

hunter french



Bath Office
6 Balustrade
Bath
BA1 6QA
01225 444454

Corsham Office
3 High Street
Corsham
SN13 0ES
01249 715775

Frome Office
19 Paul Street
Frome
BA11 1DT
01373 464040

Devizes Office
12 St Johns Street
Devizes
SN10 1BD
01380 722784



The Retreat, Frome, BA11 5JU

Tucked away off the beaten track and steeped in history, this substantial Georgian detached double-fronted former farmhouse is believed to have originally been part of the Longleat Estate and later, following the arrival of the railway, it became the station masters house. The property offers spacious accommodation arranged over three floors and features large sash windows with working shutters and exposed beams. As you enter the property you arrive in a lovely wide entrance hall with tiled floor, there is a spacious snug with open fire and bi-fold doors opening to the 2nd kitchen/study, which also has access from the hallway. There is an inner hall which provides access to the dining room, well equipped kitchen and a stunning living room which has an attractive double aspect overlooking the garden which is accessed via French doors. Also, at this end of the house there is a large pantry and downstairs cloakroom. On the first floor there is an impressive master suite with walk in wardrobe and ensuite bathroom, three further double bedrooms and large family bathroom. On the second floor there are four rooms that would have once been the servant's quarters, two of these are currently used as storage and two as office/study space with scope for use as additional bedrooms. In addition to the main house there is a one bedroom self-contained annex, ideal for multi-generational living or let out as an additional form of income. The property is set within a mature and well stocked garden which is mainly laid to lawn, bounded by stunning flowerbeds and rockeries containing a variety of plants, shrubs and trees. There is a covered terrace ideal for alfresco dining. There is also a decorative patio, ornamental pond and gravelled area. To the front of the property there is a large gravelled drive providing off road parking for four to five vehicles which is accessed via wrought iron gates. EPC = F.



£825,000

Ground Floor

Approx. 191.1 sq. metres (2056.7 sq. feet)



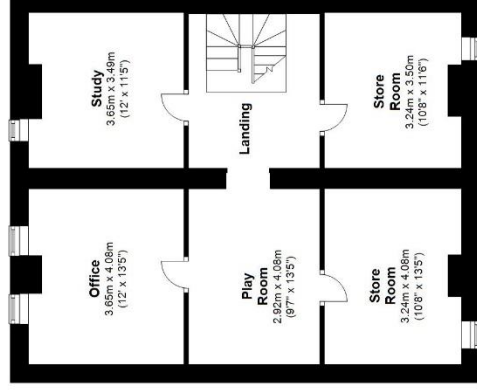
First Floor

Approx. 108.4 sq. metres (1167.2 sq. feet)



Second Floor

Approx. 82.2 sq. metres (884.3 sq. feet)



Total area: approx. 381.7 sq. metres (4108.3 sq. feet)