

hunter french



Bath Office
6 Balustrade
Bath
BA1 6QA
01225 444454

Corsham Office
3 High Street
Corsham
SN13 0ES
01249 715775

Frome Office
19 Paul Street
Frome
BA11 1DT
01373 464040

Devizes Office
15 Market Place
Devizes
SN10 1HT
01380 722784

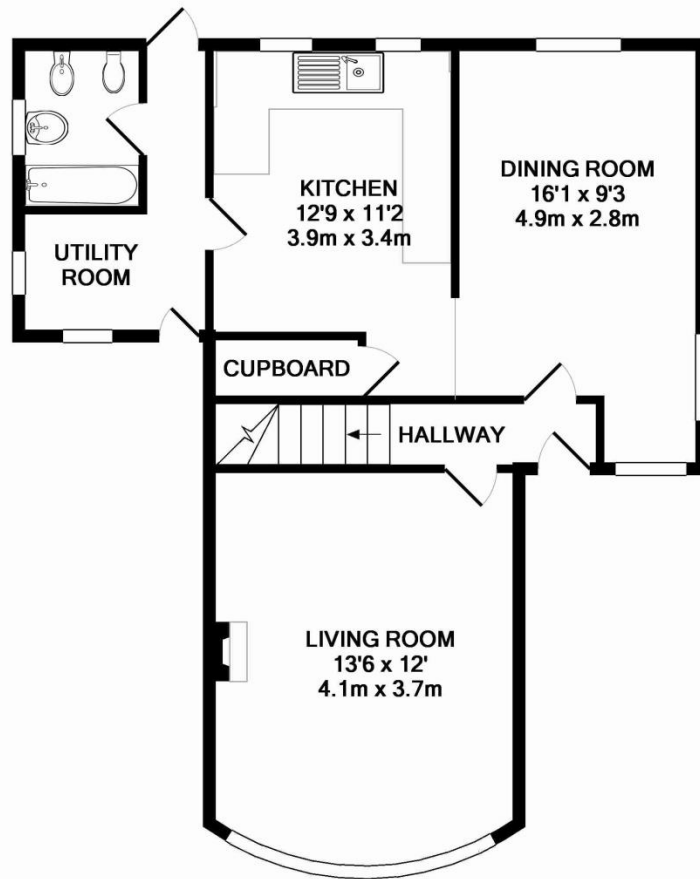


Station House, West Cranmore, BA4 4QP

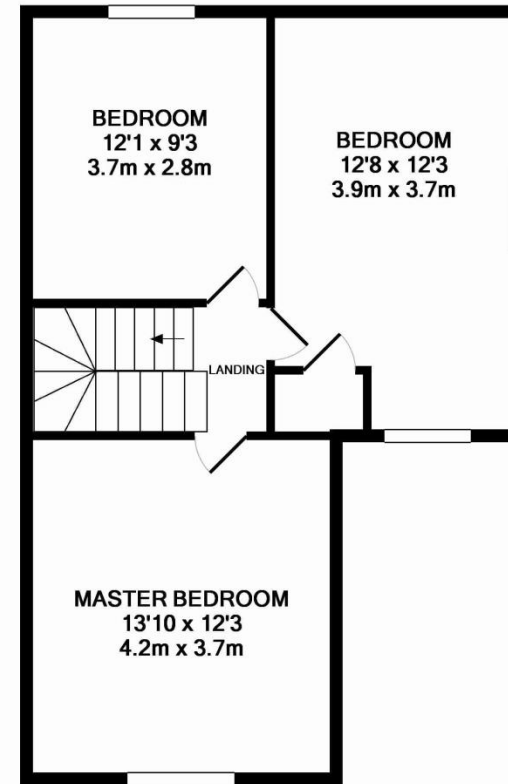
A wonderful opportunity has arisen to purchase this Victorian former Station Masters House which has not been on the open market in over 30 years. This truly unique property overlooks Cranmore train Station on one side, open countryside on the other and would make a wonderful family home. The accommodation comprises of a spacious living room with stunning bay window and period fireplace, there is a dining room with a triple aspect opening to a cosy kitchen with an oil fired Rayburn and window overlooking the garden. In addition to this there is a useful boot room/utility and downstairs bathroom. On the first floor you will find three double bedrooms all with wonderful views. Externally there is a front garden with parking and to the rear there is a large mature garden mainly laid to lawn and enjoying a high degree of privacy. Station House is conveniently placed for both Private and state schools at all levels of schooling and lies within easy reach of the wonderful new Hauser and Wirth Gallery in Bruton and the private members club 'Babington House'. Castle Cary is 15 minutes away which serves London and elsewhere with fast commuter and local trains. Frome and Bruton also have well-used Stations. Beyond that, Bath is around 40 minutes by car and Bristol is a similar drive away to catch the M4 M5 etc. the A303 to London also 35/40 minutes in the other direction. Bus links to London via Berry's Superfast is a veritable institution and National Express also operates services from Frome and Shepton Mallet to central London and also to its airports. EPC = E.



£500,000



GROUND FLOOR



1ST FLOOR

Whilst every attempt has been made to ensure the accuracy of the floor plan contained here, measurements of doors, windows, rooms and any other items are approximate and no responsibility is taken for any error, omission, or mis-statement. This plan is for illustrative purposes only and should be used as such by any prospective purchaser. The services, systems and appliances shown have not been tested and no guarantee as to their operability or efficiency can be given
 Made with Metropix ©2016