



Miskin Road, Dartford DA1 2LS

Guide Price £1,350,000 Freehold



A beautifully restored and extended late Victorian detached house, where every detail has been meticulously considered to create a home that combines beautiful timeless period features with an elegant and contemporary interior design. With high corniced ceilings on both the ground and first floor, the house gives a feeling of spaciousness and light throughout, with well defined rooms that are ideal for both entertaining and satisfying the demands of modern family life.

Set back in a wide plot, the property enjoys a beautifully manicured English country-style walled garden to the rear, laid mainly to lawn and framed by well stocked herbaceous borders and beds.

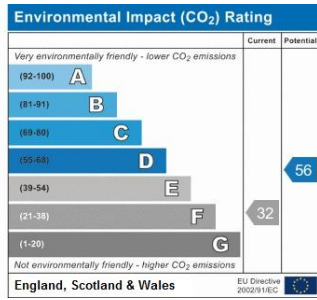
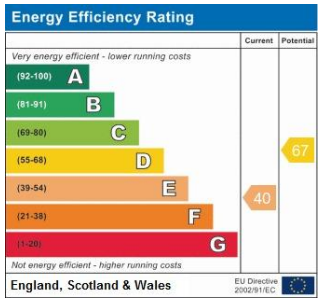
There is a cabin which is currently used as an office which could also be used as a gymnasium/summerhouse. The cabin also incorporates a garden shed.

The property is approached from an attractive gated gravel driveway providing additional parking with two integral garages.



The house is situated in a very sought after road, well served with local schools and excellent train links into London.

Miskin Road is situated between both Bexley and Dartford, well served with popular Grammar Schools. Both Bexley and Dartford provide an array of shops, superstores, leisure facilities pubs and restaurants.



Please refer to

www.jdmestateagents.com

to view our full area guides



Miskin Road, Dartford

Gross Internal Area (approx) = 295 sq m / 3175 sq ft

Garage = 20.8 sq m / 224 sq ft

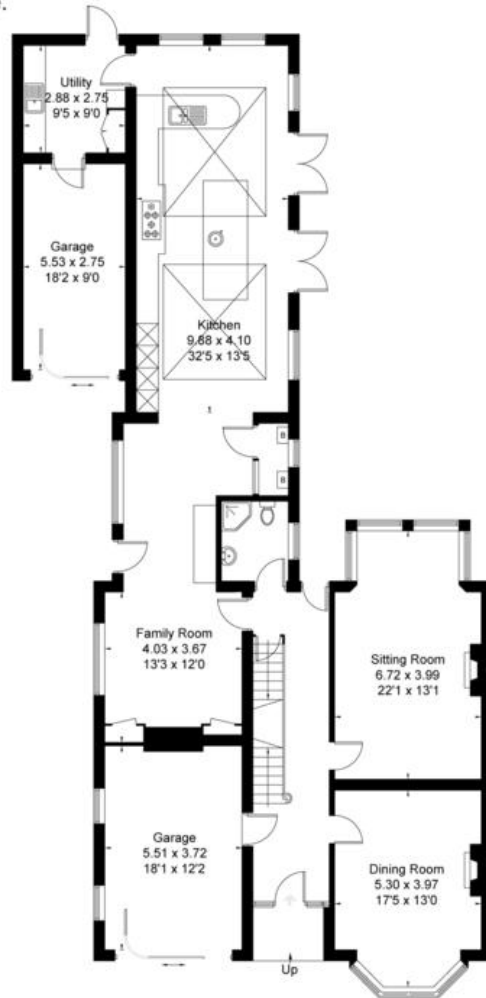
Cellar = 25.1 sq m / 270 sq ft

Garden Office = 17.6 sq m / 189 sq ft

Total = 358.5 sq m / 3858 sq ft

For identification only. Not to scale.

© Floorplanz Ltd

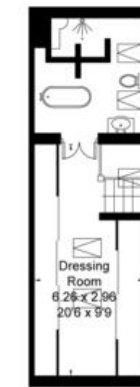


Ground Floor

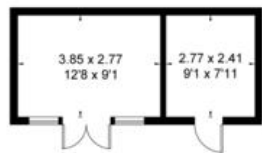
⊞ Reduced headroom below 1.5m / 5'0



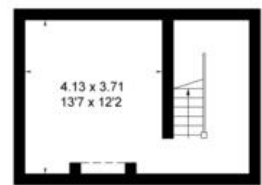
First Floor



Second Floor



Garden Office
(Not Shown In Actual Location / Orientation)



Cellar

