



Crooms Hill, Greenwich SE10

£1,850,000 Freehold



A rare and fantastic opportunity to purchase a piece of history! Crooms Hill is Greenwich's premier road and runs along the west side of Greenwich Park. This Grade II-listed Georgian town house is believed to originally have been a single house of early-mid C17 origin. It was then re-fronted and divided mid C18, to now provide approximately 2,800 square feet (260 SM) of accommodation over 5 floors.

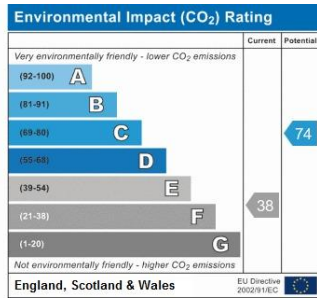
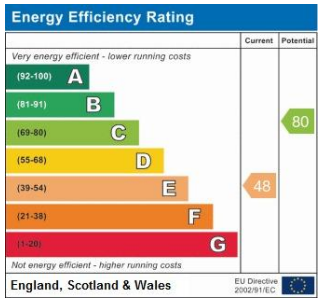
In addition to the flexible accommodation, the house retains many period features including fireplaces, wooden floors and large sash windows. Though a much over used phrase by estate agents, it really is one of those properties that needs to be viewed to be appreciated. There is also a surprisingly large 115' garden which benefits from a south westerly aspect.

It's located moments from both Cutty Sark (0.3 miles) and Greenwich DLR (0.4 miles) stations as well as the overground at Greenwich giving fast and convenient access into Canary Wharf and the City. All of Greenwich's shops, bars and restaurants are within easy reach as are all the historical places of interest. Greenwich Theatre and the Fan Museum are literally just down the road. You can even walk across to the Isle of Dogs via the foot tunnel under the Thames.

It is within the Maritime Greenwich, World Heritage Site, which Historic England describe as 'the ensemble of buildings at Greenwich, an outlying district of London, and the park in which they are set, symbolize English artistic and scientific endeavour in the 17th and 18th centuries. The Queen's House (by Inigo Jones) was the first Palladian building in England, while the complex that was until recently the Royal Naval College was designed by Christopher Wren. The park, laid out on the basis of an original design by Andre Le Notre, contains the Old Royal Observatory, the work of Wren and the scientist Robert Hooke.'

If you are looking for a unique home in a historic and convenient location, you need look no further.





Please refer to

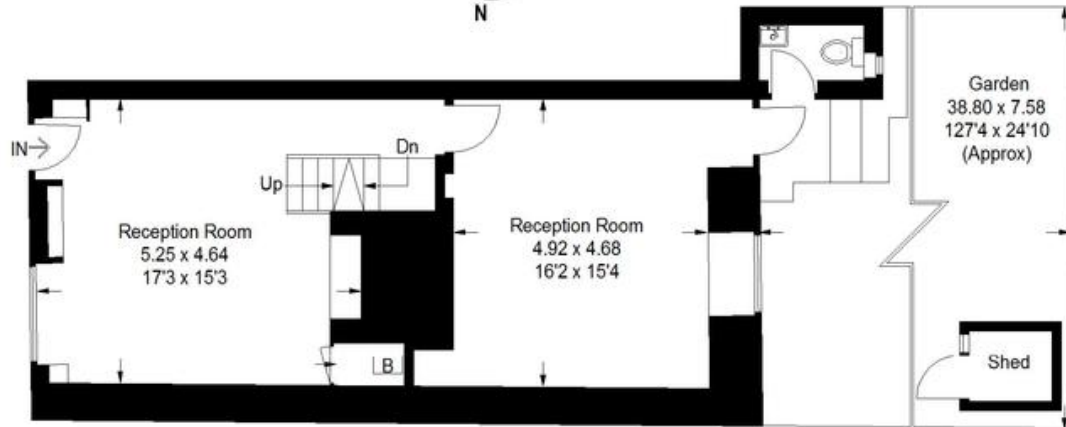
www.jdmestateagents.com

to view our full area guides

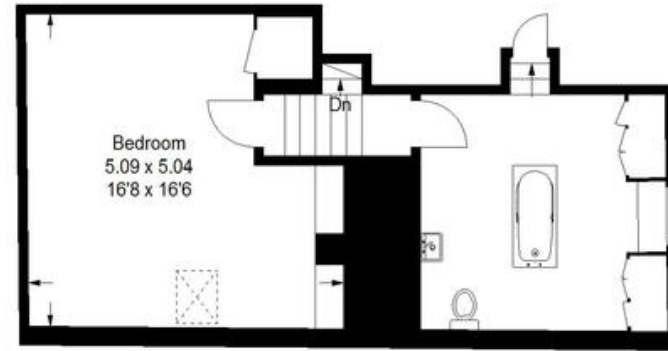


Crooms Hill, SE10

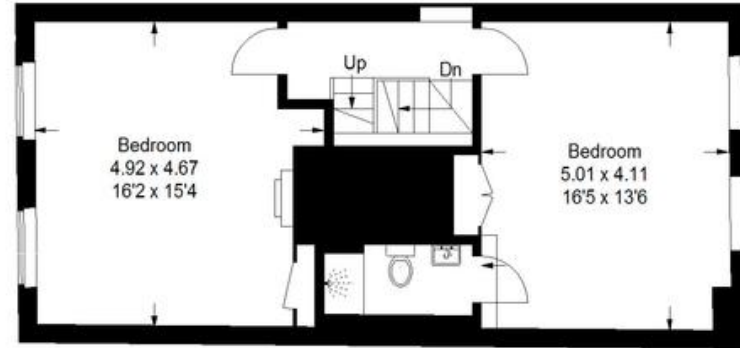
Approximate Gross Internal Area
(Excluding Shed) = 259 sq m / 2788 sq ft
Wc = 1.7 sq m / 18 sq ft
Total = 260.7 sq m / 2806 sq ft



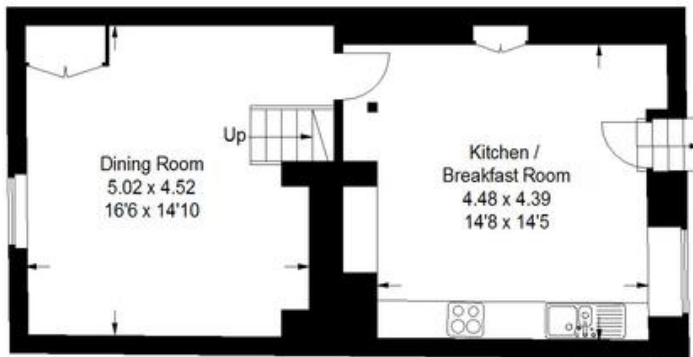
Ground Floor



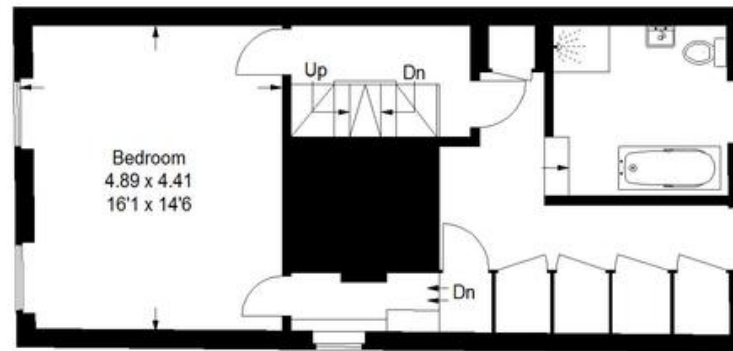
Third Floor



Second Floor



Lower Ground Floor



First Floor

Illustration for identification purposes only, measurements are approximate, not to scale.
FloorplansUsketch.com © 2016 (ID293089)

