



LIVE  
**PENINSULA**  
PLAY IN THE COUNTRY  
CITY



Another quality development by

**Harrison**

One & two bedroom and  
studio apartments

Brilliant location Superb design  
Impressive specification Excellent value

LIVE  
PENINSULA  
PLAY IN THE COUNTRY  
CITY

great location

## For the life you want to live

This is your opportunity to own a superb studio, one bed or two bed apartment, beautifully appointed in a landmark building, with a range of designs to suit your style.

## The place you want to be

Designed for active lifestyles, the exquisitely finished homes will offer the perfect city living space, ideally located to pursue the wide variety of leisure activities available locally.

Yes – you are just a walk away from Sheffield's vibrant city centre, with its impressive retail, leisure and cultural attractions and amenities.

Peninsula couldn't be better located to access the city's excellent bus and supertram network. Sheffield Ski Village and the Five Weirs Walk are both within easy reach. A convenience supermarket, shops, bars, cafes and restaurants are very close at hand; the university and teaching hospitals are just minutes away.

But there's so much more. With secure cycle storage and basement parking for car owners, Peninsula provides easy road access to the motorway network and Yorkshire's spectacular countryside.

contemporary

## A dream of a home

Peninsula apartments, designed by award winning Yorkshire architects and wrapped around highly attractive private courtyards, have real class – and they are fitted out to match – fully fitted kitchens with integrated dishwashers and washer/dryers, quality oak veneered doors with polished aluminium ironmongery, Sky-ready TV points and more...

## Unrivalled value

Peninsula offers such great value, so it's hardly surprising that almost two thirds of the apartments on offer have sold off plan. Individual apartment prices are available from the selling agents.

Still you can choose from a range of designs – one and two bed and studio apartments - giving you not only a great place to live but also a sound property investment.

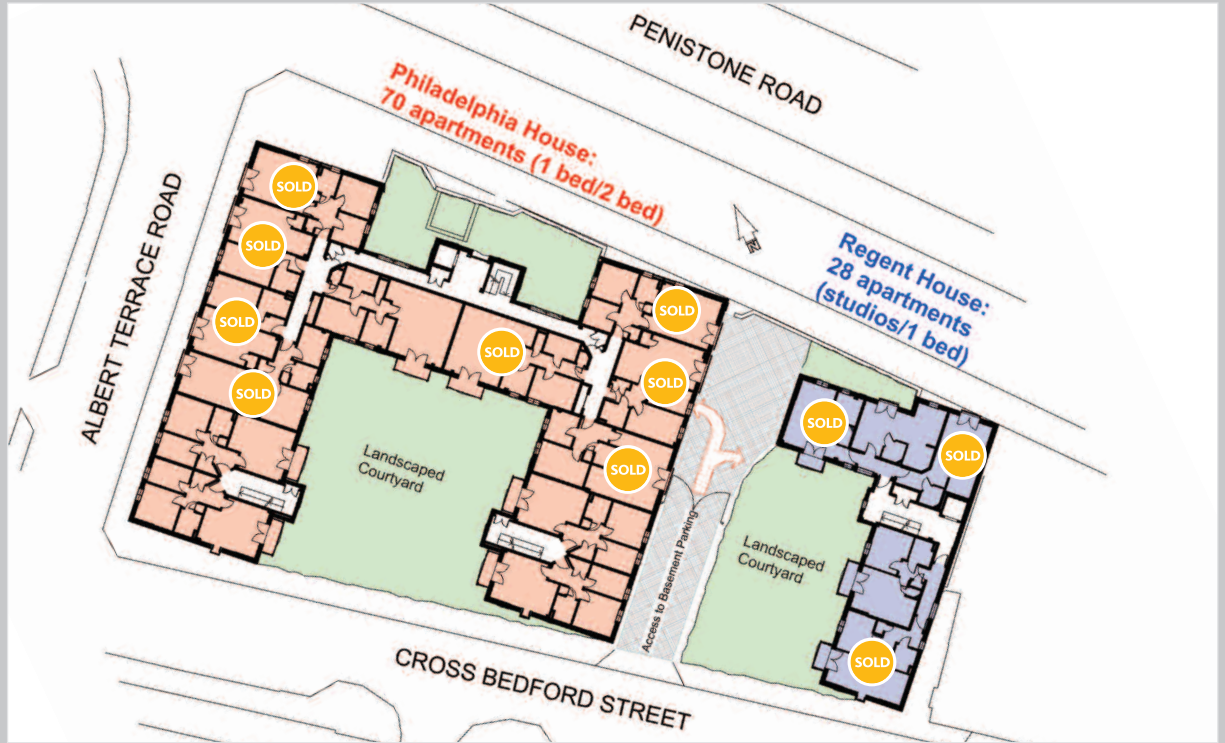


stylish

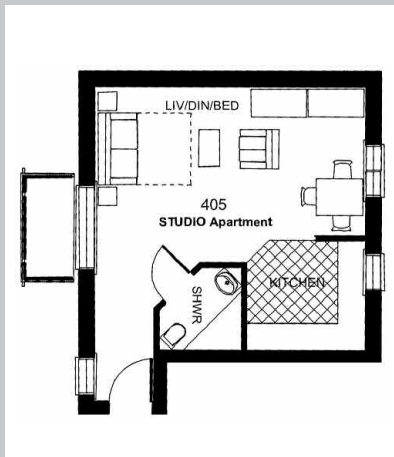
LIVE  
PENINSULA  
PLAY IN THE COUNTRY  
CITY

designed  
for living

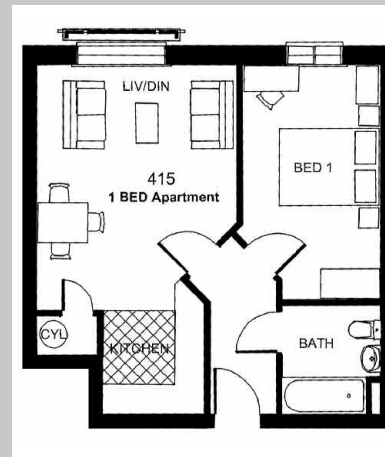
Site plan - showing 3rd floor as an example of internal layouts



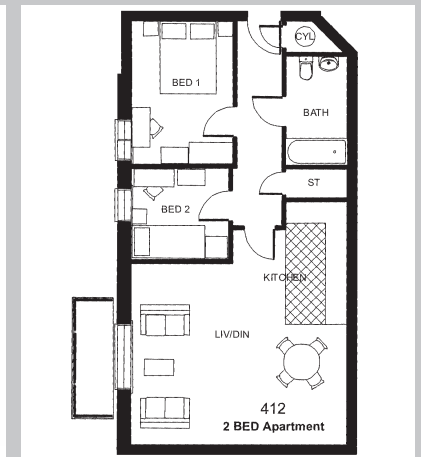
Floor plans (Indicative only. Not to scale)



Typical studio



Typical 1 bed



Typical 2 bed

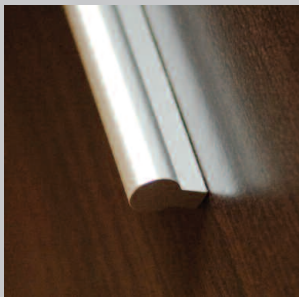
## Sample specification

(This may be subject to change for individual apartments)



### Kitchen units/white goods

- High quality floor and wall units with high gloss cream finish doors/drawers and satin steel handles
- 40mm woodmix block worktops with co-ordinating splashback panels  
Stainless steel sink and drainer
- Built-in oven and ceramic hob with
- stainless steel extractor hood and matching back panel, all by CDA
- Fully integrated dishwasher
- Fully integrated washer/dryer
- Freestanding fridge/freezer in silver
- 



### Doors and finishes

- Solid core flush oak veneered doors with polished aluminium ironmongery



### Lighting & aerals

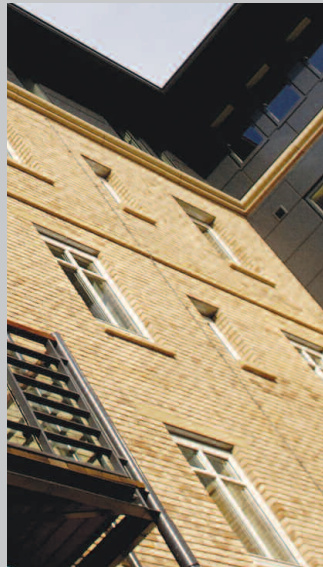
- Feature dichroic spotlights to kitchen and bathroom
- Sky-ready TV points (own digibox required)



### Bathroom

- Ceramic wall tiling (Heritage Blanco and Heritage Matt Cream Mosaic) and ceramic floor tiling (Heritage Lessina – cream) to bathroom
- Uniclic enhanced maple laminate flooring to kitchen





LIVE  
PENINSULA  
PLAY IN THE COUNTRY  
CITY

# LIVE PENINSULA

PLAY IN THE COUNTRY CITY

One & two bedroom and studio apartments

## Key distances from Peninsula

Sheffield City Centre	10 minute walk
Supertram - nearest stop	1 minute walk
Sheffield Railway Station	12 minutes
M1 motorway	12 minutes
Airports: Robin Hood	45 minutes
Leeds/Bradford	60 minutes
Manchester	70 minutes

## Peninsula is an S Harrison development

S Harrison Group is a privately-owned development company with an impressive 55 year track record of delivering property solutions to the highest standards. Harrison is the company behind a number of major and award-winning residential developments across the north of England.

It is Harrison's commitment to quality which gives purchasers at Peninsula the confidence that they are making a sound investment – as well as purchasing a beautiful home.

For more information about S Harrison visit

[www.s-harrison.co.uk](http://www.s-harrison.co.uk)

### Disclaimer

The developer reserves the right to alter layouts and specification. We advise you to request confirmation of the exact details prior to exchange of contracts.

Whilst we endeavour to make our sales particulars fair, accurate and reliable, they are a general guide to the property and, accordingly, if there is any point which is of particular importance to you, please contact the relevant office. SERVICES: The Agents have not tested any apparatus, equipment, fittings or services and so cannot verify they are in working order. The buyer is advised to obtain verification. MEASUREMENTS: Please note all measurement details are approximate and should not be relied upon as exact. FLOOR PLANS: Plans are for guidance purposes only and under no circumstances should they be relied upon for use when planning carpets and other such fixtures, fittings or furnishings.



Peninsula is available exclusively via leading Sheffield estate agents Saxton Mee. For more details about the development or to arrange a viewing of the superbly fitted out show apartment, contact:



Saxton Mee (New Homes) Ltd  
245 Crookes, Sheffield S10 1TF  
Tel: 0114 266 8365 Fax: 0114 266 9288  
Email: [newhomes@saxtonmee.co.uk](mailto:newhomes@saxtonmee.co.uk)

Another quality development by

## Harrison

S Harrison Developments Ltd  
Stanley Harrison House  
The Chocolate Works  
Bishopthorpe Road  
York YO23 1DE  
Tel: 01904 654444 Fax: 01904 653366  
[www.s-harrison.co.uk](http://www.s-harrison.co.uk)  
E-mail: [info@s-harrison.co.uk](mailto:info@s-harrison.co.uk)