



COURTENAY
Sales, Lettings and Valuations

Sugden Road, Battersea, SW11

£725,000^{STC}, Leasehold

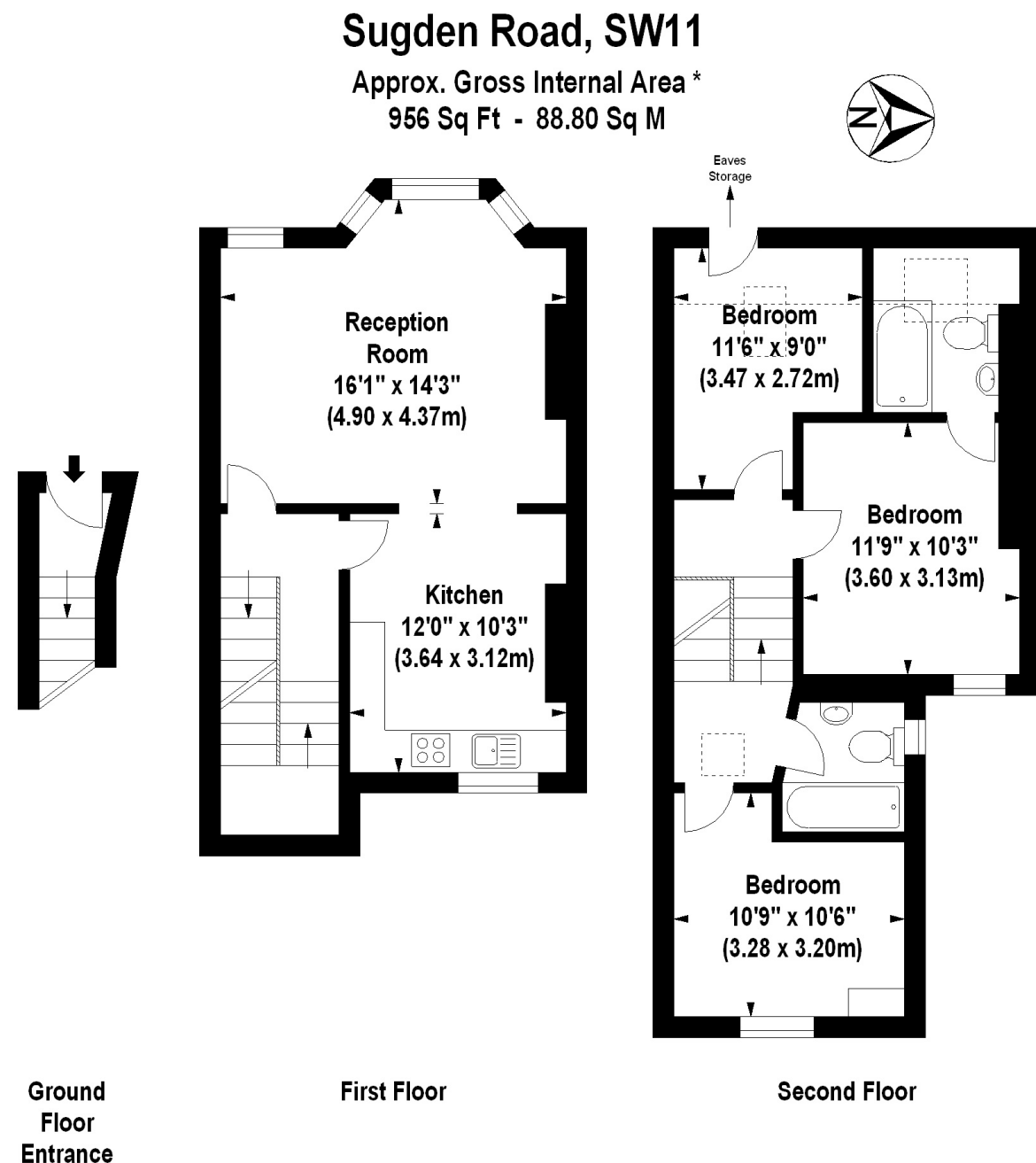


Illustration For Identification Purposes Only. Not To Scale
 *Floorplan Drawn According To RICS Guidelines
 www.r3photography.co.uk © 2012



174 Lavender Hill, Battersea, SW11 5TG

020 7228 9911

A first and second floor maisonette in a converted Victorian terraced house close to Clapham Common and approximately 0.6 of a mile from Clapham Junction BR Station. There are three double bedrooms, two bathrooms, reception room and a kitchen/breakfast room laid out over two floors. EPC = D

Important Notice

Courtenay, their clients and any joint agents give notice that: 1: They are not authorised to make or give any representations or warranties in relation to the property either here or elsewhere, either on their own behalf or on behalf of their client or otherwise. They assume no responsibility for any statement that may be made in these particulars. These particulars do not form part of any offer or contract and must not be relied upon as statements or representations of fact. 2: Any areas, measurements or distances are approximate. The text, photographs and plans are for guidance only and are not necessarily comprehensive. It should not be assumed that the property has all necessary planning, building regulation or other consents and Courtenay have not tested any services, equipment or facilities. Purchasers must satisfy themselves by inspection or otherwise.