

MICAWBER WHARF

ISLINGTON • N1



MICAWBER WHARF

ISLINGTON • N1

A beautiful 2 bedroom maisonette apartment in a secure modern development. The property benefits from generous built-in storage, sunny open plan living/dining/kitchen space and a share of freehold.

2 Bedrooms • 2 Bathrooms • Reception • Balcony • Open-plan kitchen/reception • En-suite • Cloakroom/WC

Micawber Wharf is located on Micawber Street and is within easy reach of all the amenities of Islington, Shoreditch and Hoxton. The flat is located between Old Street (0.6 miles) and Angel (0.7 miles) Underground stations. City Road provides excellent bus links to the City and to King's Cross/St Pancras International with its high speed rail connections to Europe. The Regent's Canal is a short distance away as is Shepherdess Walk park.

Please note that all distances are approximate.

These particulars are intended only as a guide and must not be relied upon as statements of fact. Your attention is drawn to the Important Notice on the last page of the text.





Accommodation

Arranged over the first and second floors this modern apartment has a fantastic 18' open plan kitchen/reception room and balcony. There is also a downstairs cloakroom with built-in storage and laundry.

On the second floor there is a 21' master bedroom with built-in wardrobes leading into an en suite shower room. Also on the second floor there is a second double bedroom and a family bathroom with twin basins and a full bath.

Local Authority

London Borough of Hackney

Tenure

Share of freehold

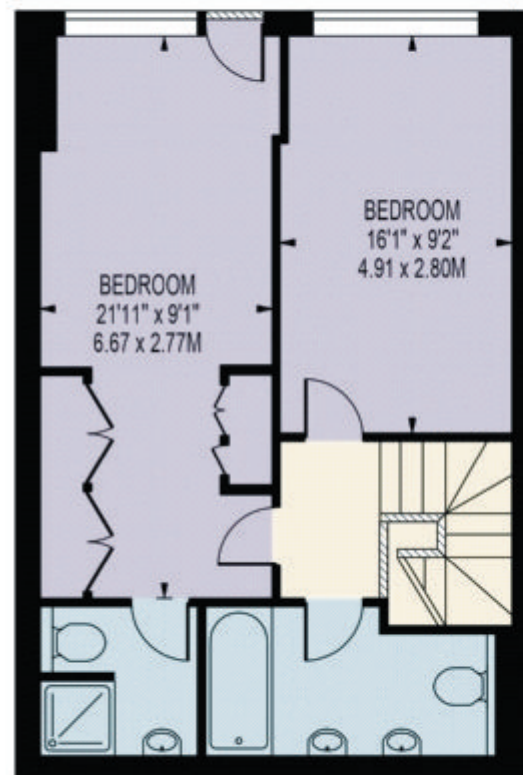
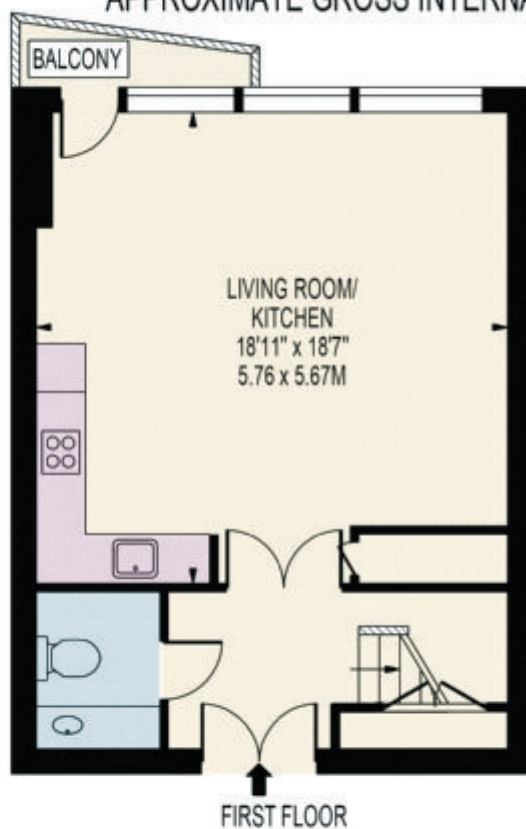
Viewings

To arrange a viewing please contact our Islington Sales team on 020 3657 7340 or via email at islington@knightfrank.com



MICAWBER WHARF

APPROXIMATE GROSS INTERNAL FLOOR AREA: 997 SQ FT - 92.62 SQ M



FOR ILLUSTRATION PURPOSES ONLY

THIS FLOOR PLAN SHOULD BE USED AS A GENERAL OUTLINE FOR GUIDANCE ONLY AND DOES NOT CONSTITUTE IN WHOLE OR IN PART AN OFFER OR CONTRACT. ANY INTENDING PURCHASER OR LESSEE SHOULD SATISFY THEMSELVES BY INSPECTION, SEARCHES, ENQUIRIES AND FULL SURVEY AS TO THE CORRECTNESS OF EACH STATEMENT. ANY AREAS, MEASUREMENTS OR DISTANCES QUOTED ARE APPROXIMATE AND SHOULD NOT BE USED TO VALUE A PROPERTY OR BE THE BASIS OF ANY SALE OR LET.

