



Established 1981

Estate Agents • Residential Sales
Investments • Lettings

Totteridge Office:

74 Totteridge Lane
Totteridge
London N20 8QG

Telephone: 020 8445 3132

Fax: 020 8445 4492

Email: totteridge@realestates-wsp.co.uk

www.realestates-wsp.co.uk



Totteridge Common
Totteridge N20 8LL
POA Freehold

Woodside Park Office:

14/14A Sussex Ring, Woodside Park, London N12 7HX **Tel: 020 8445 6387 Fax: 020 8445 4492** Email: info@realestates-wsp.co.uk

Real Estates on behalf of themselves and for the vendors of these properties whose agents they are, give notice that: (1) These particulars or any part of these particulars do not constitute a contract or an offer. (2) All statements made in these particulars relating to these properties are made without responsibility on the part of Real Estates or the Vendor. (3) Any intending purchaser must satisfy himself by inspection or otherwise as to the correctness of these particulars. (4) Real Estates or any person in their employment has no authority to make or give any warranty or representation whatever in relation to these properties.

Totteridge Common , Totteridge

A magnificent and truly outstanding family residence of just under 20,000 sq ft is available for the first time since its creation by the present owners around nine years ago.

Constructed by renowned Barleycroft Builders in a pleasingly aesthetic Arts & Crafts style of architecture which reflects the established landscape of Totteridge Common, yet encompasses all manner of modern and contemporary specifications throughout, has ensured that this magnificent home provides every comfort and convenience for todays discerning lifestyle.

This dark brick, Manor style property with its abundance of leaded light windows, Jacobean style chimneys and feature full height semi-circular window to front, is thoughtfully planned on all levels. Close attention to detail both externally and internally has created a beautiful and tastefully presented comprehensive range of formal and informal reception rooms, seven bedroom suites, office and study suites, and a self-contained staff flat within the main residence, as well as a superb basement complex providing recreational and relaxation facilities including party room, gym, indoor swimming pool and cinema. In addition, the property boasts two beautifully crafted spiral staircases plus a convenient lift, and hosts the necessary array of cloakrooms, utility room, laundry room, plant and control rooms, garaging, and a plethora of storage rooms and cupboards throughout.

Complementing this bespoke home are the secluded landscaped gardens to the front and rear, with raised terraces affording panoramic views across Totteridge Conservation area and Mill Hill Valley, with its prominent London skyline to the south.

Although positioned in the heart of Totteridge Lane itself, and occupying a plot of around two acres, the property is well screened from the main road and accessed on both sides by electronically operated security gates, providing entrance and exit directly onto the Lane from its secluded driveway and forecourt parking area.

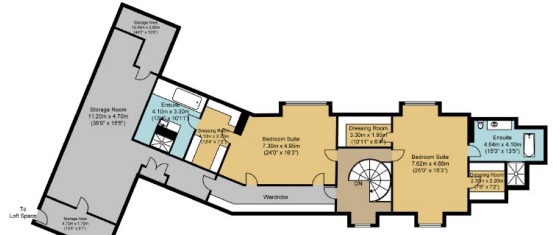
Viewing:

By prior appointment with the vendors agent Real Estates Tel:
0208 445 3132

You may download, store and use the material for your own personal use and research. You may not republish, retransmit, redistribute or otherwise make the material available to any party or make the same available on any website, online service or bulletin board of your own or of any other party or make the same available in hard copy or in any other media without the website owner's express prior written consent. The website owner's copyright must remain on all reproductions of material taken from this website.



Oakhurst
Ground Floor
Approximate Floor Area
5782.00 sq. ft.
(537.00 sq. m)



Oakhurst
Second Floor
Approximate Floor Area
2287.00 sq. ft.
(213.00 sq. m)



Oakhurst
Lower Ground Floor
Approximate Floor Area
5882.00 sq. ft.
(547.00 sq. m)



Oakhurst
First Floor
Approximate Floor Area
5561.00 sq. ft.
(517.00 sq. m)

Total Floor Area
Approximate Floor Area
19525.73 sq. ft.
(1814.00 sq. m)