



Nightingales

at Graylingwell Park

A stunning collection of 1, 2, 3 & 4 bedroom homes set in 85 acres of glorious parkland

Sales office open daily 10am – 5pm
01243 781 494
lindenhomes.co.uk


Linden
HOMES



Graylingwell
Park

The Browning

Ground floor

Family / Dining Room

5605 mm* x 4750 mm* 18'5" x 15'7"*

Kitchen

3615 mm x 1930 mm 11'10" x 6'6"

First floor

Living Room

4750 mm x 4295 mm 15'7" x 14'1"

Bedroom 2

4750 mm x 2550 mm 15'7" x 8'4"

Second floor

Master Bedroom

4750 mm x 2705 mm 15'7" x 8'11"

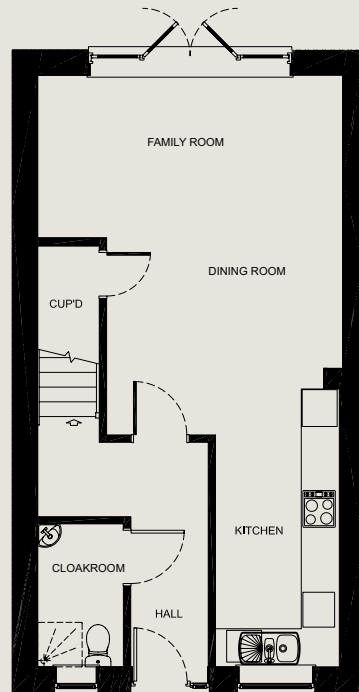
Bedroom 3

4750 mm x 2550 mm 15'7" x 8'4"

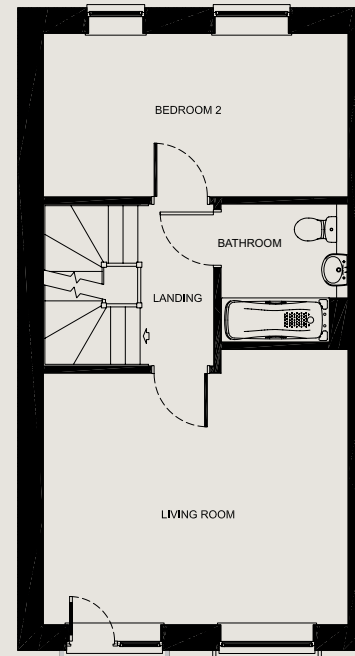
*Overall



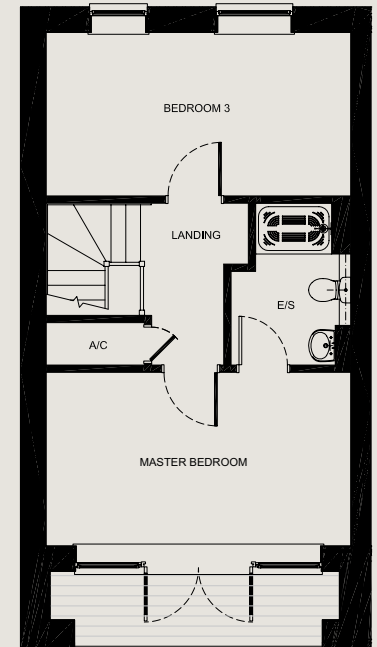
Computer Generated Image



Ground Floor



First Floor



Second Floor

3 Bedrooms

Total area: 1379 sqft / 128.1 sqm

Homes 137†, 138, 139, 140 & 141

Please note, plot 137 has an entrance on the side

† Plots are handed and vary slightly.
Please ask your sales advisor for details

Please note, floor plans and dimensions are taken from architectural drawings and are for guidance only. Dimensions stated are within a tolerance of plus or minus 50mm. Overall maximum dimensions are usually stated and there may be projections into these. Please ask your Sales Advisor for specific details.



Graylingwell
Park

The Gaskell

Ground floor

Family / Dining Room

5245 mm* x 5905 mm* 17'3" x 19'5"*

Kitchen

3565 mm x 2375 mm 11'8" x 7'10"

First floor

Living Room

5245 mm x 2900 mm 17'3" x 9'6"

Master Bedroom

4425 mm* x 3020 mm 14'6" x 9'11"

Second floor

Bedroom 2

5245 mm* x 4275 mm* 17'3" x 14'0"*

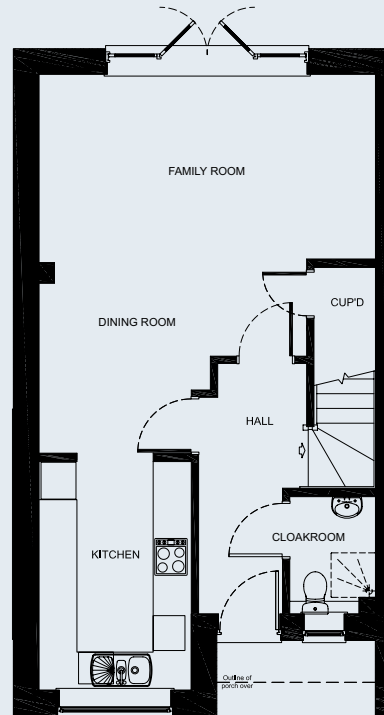
Bedroom 3

5245 mm x 2900 mm 17'3" x 9'6"

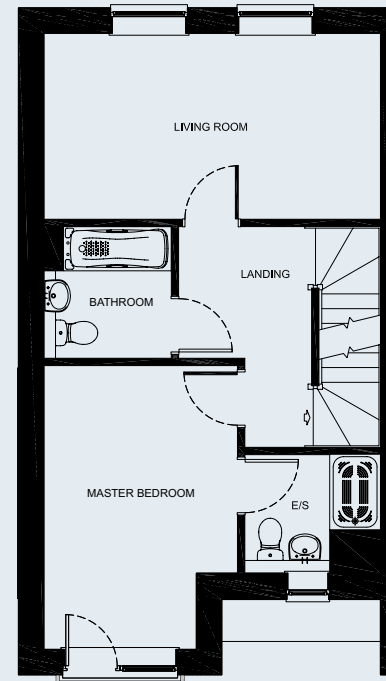
*Overall



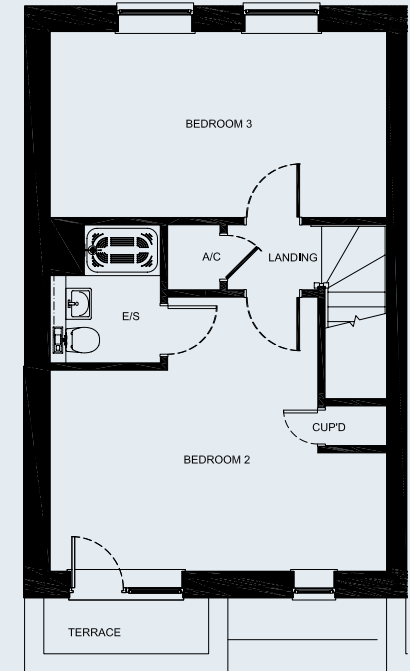
Computer Generated Image



Ground Floor



First Floor



Second Floor

3 Bedrooms

Total area: 1517 sqft / 140.9 sqm

Homes 134, 135, 136, 151,
152, 184†, 185† & 186†

† Plots are handed and vary slightly.
Please ask your sales advisor for details

Please note, floor plans and dimensions are taken from architectural drawings and are for guidance only. Dimensions stated are within a tolerance of plus or minus 50mm. Overall maximum dimensions are usually stated and there may be projections into these. Please ask your Sales Advisor for specific details.



**Graylingwell
Park**

The Forster

Ground floor

Living Room

4770 mm* x 3455 mm 15'8"*x 11'4"

Kitchen / Dining Area

3825 mm* x 2980 mm 12'7" x 9'9"

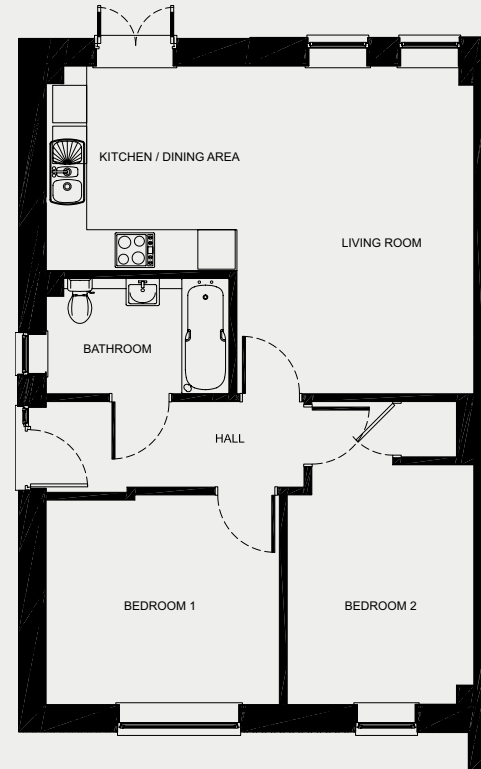
Bedroom 1

3395 mm x 2975 mm 11'2" x 9'9"

Bedroom 2

4410 mm x 2720 mm 14'6" x 8'11"

*Overall



Computer Generated Image

2 Bedrooms

Total area: 631 sqft / 58.6 sqm

Homes 142 & 144†

† Home is handed

Please note, floor plans and dimensions are taken from architectural drawings and are for guidance only. Dimensions stated are within a tolerance of plus or minus 50mm. Overall maximum dimensions are usually stated and there may be projections into these. Please ask your Sales Advisor for specific details.



**Graylingwell
Park**

The Forster

Ground floor

Living / Dining Room

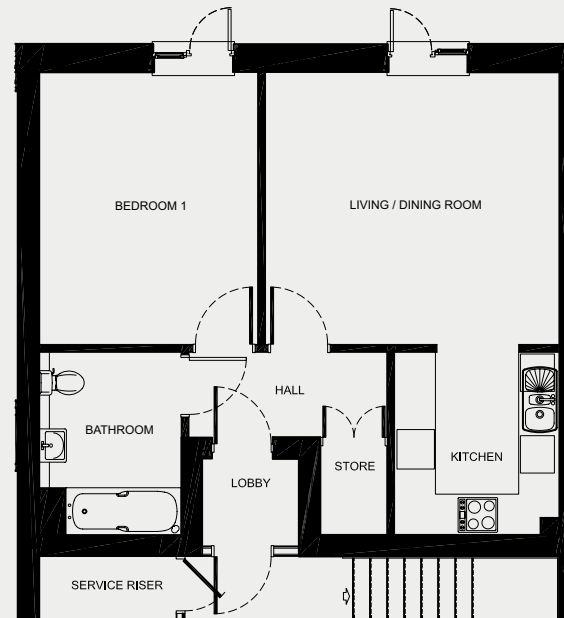
4275 mm x 3960 mm 14'0" x 13'0"

Kitchen

2660 mm x 2400 mm 8'9" x 7'10"

Bedroom 1

3960 mm x 3180 mm 13'0" x 10'5"



Computer Generated Image

1 Bedroom

Total area: 524 sqft / 48.7 sqm

Home 143

Please note, floor plans and dimensions are taken from architectural drawings and are for guidance only. Dimensions stated are within a tolerance of plus or minus 50mm. Overall maximum dimensions are usually stated and there may be projections into these. Please ask your Sales Advisor for specific details.



Graylingwell
Park

The Forster

1st, 2nd and 3rd floors

Living / Dining Room

4770 mm x 4005 mm* 15'8" x 13'2"*

Kitchen

3620 mm x 2375 mm 11'10" x 7'10"

Bedroom 1

4410 mm x 4040 mm 14'6" x 13'3"

Bedroom 2

3620 mm x 3565 mm 11'10" x 11'8"

*Overall



Computer Generated Image



2 Bedrooms

Total area: 891 sqft / 82.8 sqm

Homes 145, 146†, 147, 148†, 149 & 150†

Please note, plots 145 & 146 are first floor, plots 147 & 148 are second floor, plots 149 & 150 are third floor

† Homes are handed

Please note, floor plans and dimensions are taken from architectural drawings and are for guidance only. Dimensions stated are within a tolerance of plus or minus 50mm. Overall maximum dimensions are usually stated and there may be projections into these. Please ask your Sales Advisor for specific details.