



Sterne Street, W12

£699,999

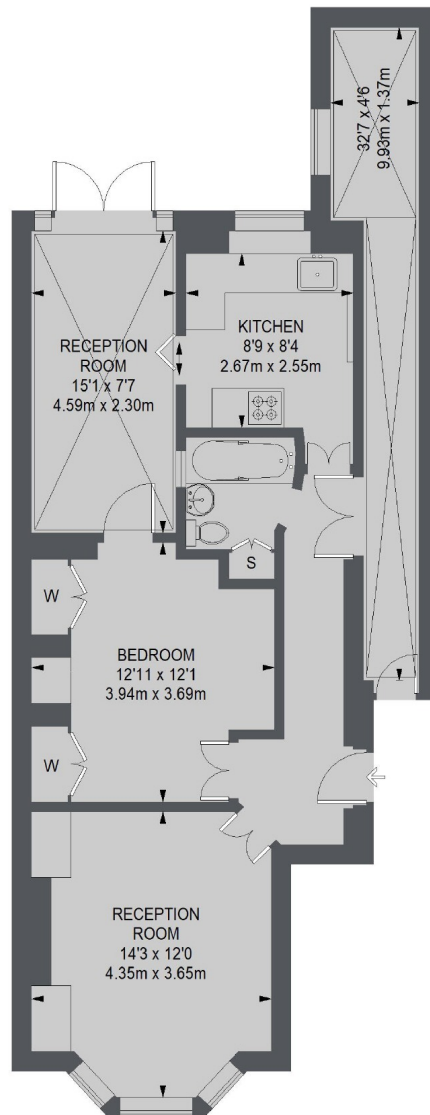
This unique and homely, one/two bedroom apartment in a Victorian terrace house, with an spacious reception room and a large garden with a summer house will make a perfect home.

Sterne street is situated just off of Wood Lane, the nearest Underground Station is Shepherds Bush (Hammersmith & City Line), and easy access to the A40/M40.

Features

- One/Two bedrooms
- Garden
- Large reception room
- Separate kitchen
- Close to Westfield
- Central Line

Sterne Street, London, W12



GROUND FLOOR

TOTAL APPROX. FLOOR AREA
756 SQ. FT. (70.27 SQ. M.)

Contact

To arrange a viewing call our office on the number below or visit our website.



Energy Rating: TBC. We aim to make our particulars both accurate and reliable. However they are not guaranteed; nor do they form part of an offer or contract. If you require clarification on any points then please contact us, especially if you're traveling some distance to view. Please note that appliances and heating systems have not been tested and therefore no warranties can be given as to their good working order.