



Waldegrave Road, TW1

£1,999,950

A wonderful five bedroom detached family home situated down a quiet lane and set within a secluded spot that offers lots of parking, a garage and a large mature garden to the rear.

Waldegrave Road is enviably located between Strawberry Hill village and Teddington high street where you will find a vast array of shops, bars and restaurants including the Michelin star 'Retro'.

Features

Detached
Large Mature Plot
Five Bedrooms
Scope To Extend
Garage
Off Street Parking



Waldegrave Road, Strawberry Hill, TW1

The ground floor of this spacious family home offers generous living accommodation with three reception rooms, a kitchen, a utility room and WC which could be extended to make a stunning home for years to come.

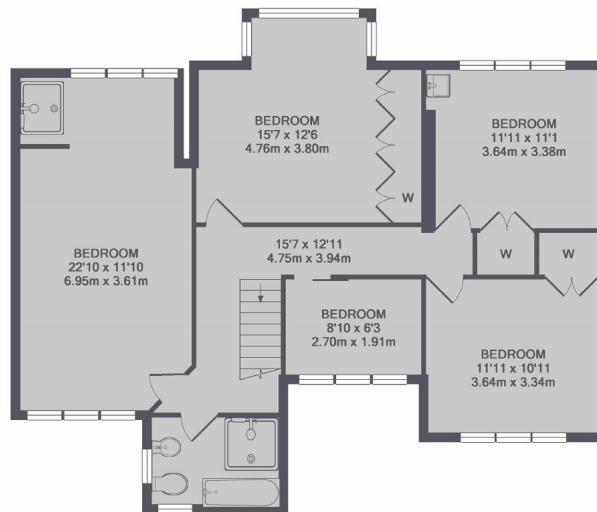
For those who like to entertain this house has it all, not only is there lots of space inside, there is also parking to the front for your guests along with a garage should you want a home for something special.

The main selling point of this beautiful house is the large mature garden to the rear, filled with various shrubs, flora & fauna and a lawn ideal for the children to play on or to host those summer barbeques.

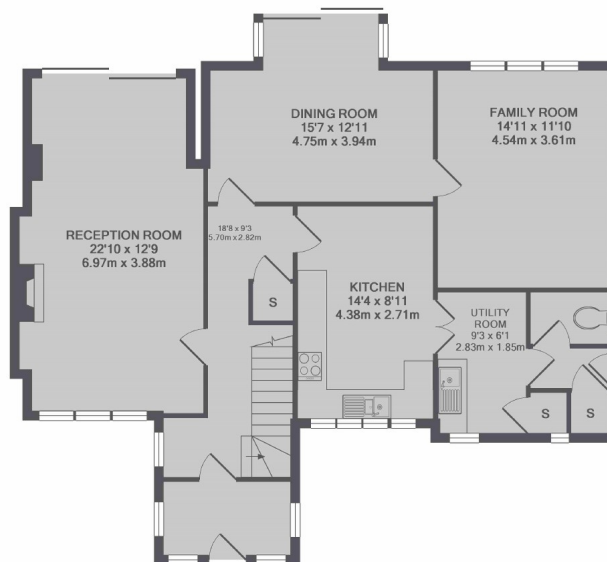




Waldegrave Road, Strawberry Hill, TW1



1ST FLOOR



GROUND FLOOR

TOTAL APPROX. FLOOR AREA 2096 SQ.FT. (194.7 SQ.M.)

Contact

To arrange a viewing call our office on the number below or visit our website.



Energy Rating: E. We aim to make our particulars both accurate and reliable. However they are not guaranteed; nor do they form part of an offer or contract. If you require clarification on any points then please contact us, especially if you're traveling some distance to view. Please note that appliances and heating systems have not been tested and therefore no warranties can be given as to their good working order.