



Cambridge Road, TW11

£2,250,000

Dexters



Cambridge Road, Teddington, TW11

Located in the heart of Teddington High Street this Victorian double fronted semi-detached family home is nearly 2,400sq ft with a large sunny garden.

Enter into a light entrance hallway with two reception rooms to either side. The double reception room has double doors leading onto a large conservatory and the second reception leads through to the kitchen.

The kitchen/breakfast room has modern shaker style units with plenty of storage space and french doors leading onto a gorgeous garden. The garden is mature, well looked after and secluded with a large summerhouse/office.

There are five generous bedrooms all to the first floor. The master with fitted wardrobes and an en-suite shower room. In addition there is large family bathroom with separate shower.

Cambridge Road is a turning off Teddington High Street. You cannot beat this location for shops, bars, restaurants and transport links via Teddington train station. Bushy Park and The River Thames are within easy reach.

Features

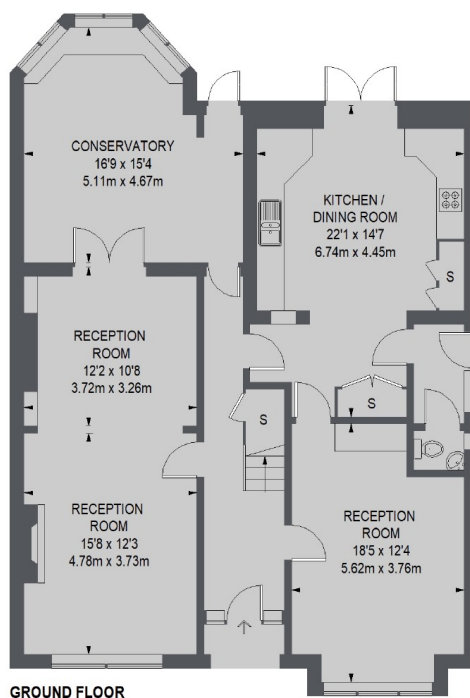
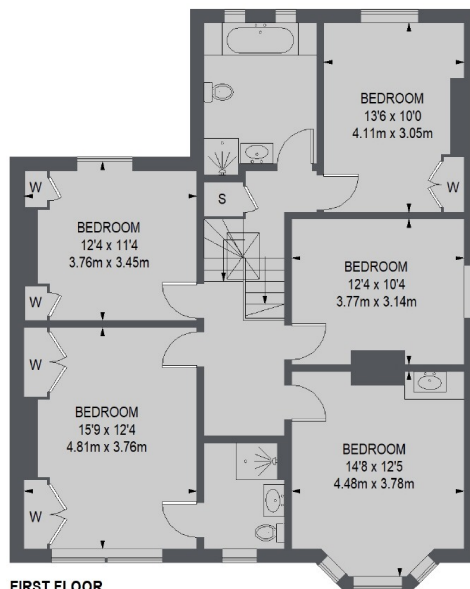
- Five Bedrooms
- Plenty Of Period Features
- Large Garden
- Two Bath/Shower Rooms
- Central Location
- Excellent School Catchment







Cambridge Road, Teddington, TW11



TOTAL APPROX. FLOOR AREA
2326 SQ. FT. (216.08 SQ. M.)

Dexters

Teddington
61 High Street, Teddington,
TW11 8HA

Sales
020 8288 8288

Energy Rating: F. We aim to make our particulars both accurate and reliable. However they are not guaranteed; nor do they form part of an offer or contract. If you require clarification on any points then please contact us, especially if you're traveling some distance to view. Please note that appliances and heating systems have not been tested and therefore no warranties can be given as to their good working order.

RICS | Regulated
Estate Agent
and Letting Agent

dexters.co.uk