



Clarence Road, TW11

£2,850,000

Dexters



Clarence Road, Teddington, TW11

Porchester House is situated in one of Teddington's finest roads. This double-fronted, semi-detached home is elegant with a stylish finish and traditional features.

Greeted by a large hallway, there are two generous reception rooms and a snug which leads onto a fantastic kitchen/family room running the whole width of the house and measures over 31ft.

The kitchen is fully fitted with 'Neff' appliances and granite work surfaces. Two sets of bi-fold doors lead on to the south-west facing garden which is decked. The garden measures approximately 80ft. There is also a downstairs cloak room and a large utility/drying room.

To the first floor, there are three double bedrooms, the bedroom at the back has a vaulted ceiling and views over the garden, a lovely feature. The master bedroom has a dressing room and en-suite.

The entrance to Bushy Park is opposite Clarence Road. A central spot close to Teddington mainline station and Teddington High Street. A beautiful tree-lined road also close to the River.

Features

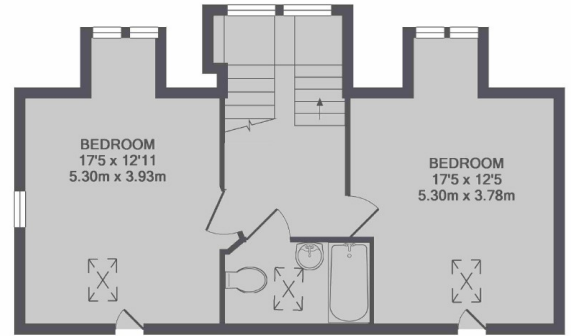
- Five Double Bedrooms
- Dressing Room
- Three Bath/Shower Rooms
- South Facing Garden
- Garage
- Off Street Parking



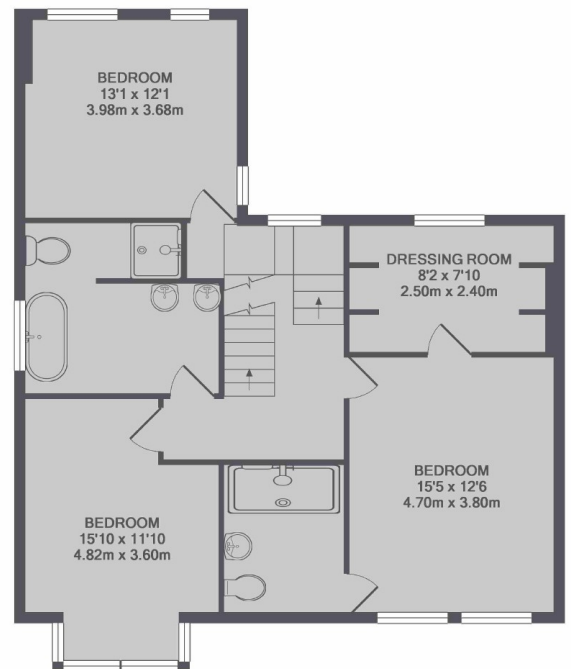




Clarence Road, Teddington, TW11

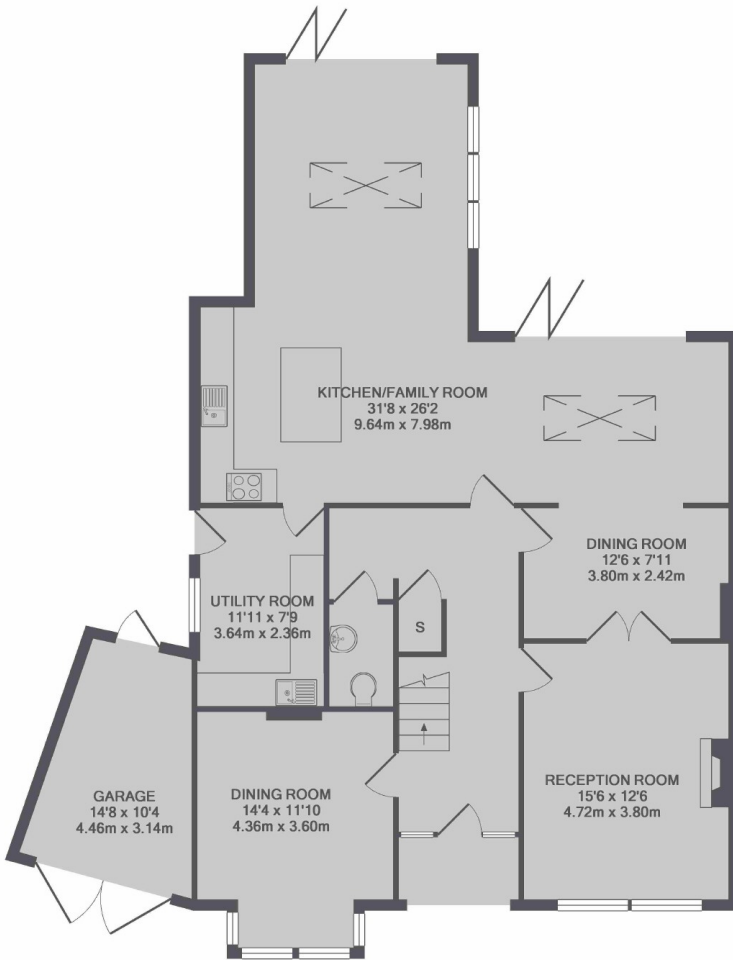


2ND FLOOR



1ST FLOOR

TOTAL APPROX. FLOOR AREA 2828 SQ.FT. (262.7 SQ.M.)



GROUND FLOOR

Dexters

Teddington
61 High Street, Teddington,
TW11 8HA

Sales
020 8288 8288

Energy Rating: D. We aim to make our particulars both accurate and reliable. However they are not guaranteed; nor do they form part of an offer or contract. If you require clarification on any points then please contact us, especially if you're traveling some distance to view. Please note that appliances and heating systems have not been tested and therefore no warranties can be given as to their good working order.

 **RICS** | Regulated
Estate Agent
and Letting Agent

dexters.co.uk