



Teddington, TW11

£1,650,000

Dexters





## Bridgeman Road, Teddington, TW11

A rare Victorian townhouse in the centre of Teddington. Semi-detached with all its original features, it will not disappoint. The station is on your doorstep along with the High Street.

Arranged over four floors and offering in excess of 2200sq ft this home offers flexible living space throughout and is stylish with a traditional twist.

The three reception rooms offer living space or an additional guest bedroom if needed. The kitchen/breakfast room is a high specification with an "Aga". There is a utility room with additional storage and a cloakroom. There are fireplaces, cornicing and restored wooden flooring.

Three large double bedrooms are over the first and second floor with two stunning luxury bathrooms and plenty of storage. The garden is a perfect size and a sun trap.

You will not beat this location for transport links, school catchment, bespoke local eateries and coffee shops along with High Street stores. The River Thames and Bushy Park are also close by.

### Features

Double Glazed  
Sash Windows  
Period Features  
Under Floor Heating  
High Ceilings  
Perfect Location





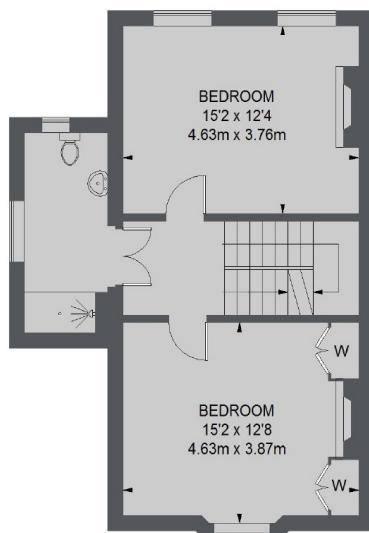




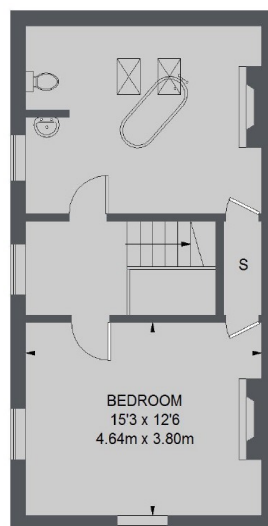




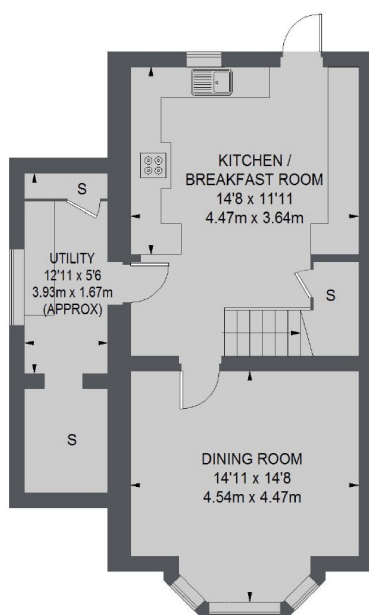
# Bridgeman Road, Teddington, TW11



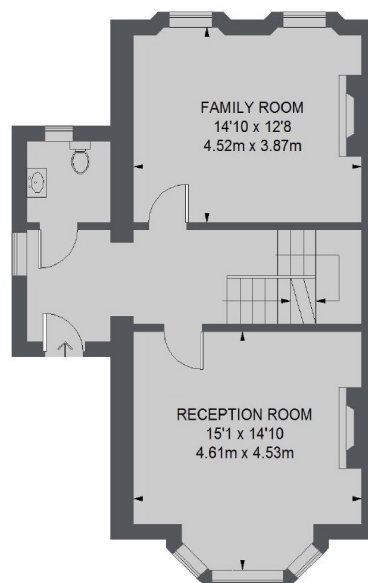
FIRST FLOOR



SECOND FLOOR



LOWER GROUND FLOOR



RAISED GROUND FLOOR

TOTAL APPROX. FLOOR AREA  
2269 SQ. FT. (210.8 SQ. M.)

**Dexters**

Teddington  
61 High Street, Teddington,  
TW11 8HA

Sales  
020 8288 8288

Energy Rating: E. We aim to make our particulars both accurate and reliable. However they are not guaranteed; nor do they form part of an offer or contract. If you require clarification on any points then please contact us, especially if you're traveling some distance to view. Please note that appliances and heating systems have not been tested and therefore no warranties can be given as to their good working order.

**RICS** | Regulated  
Estate Agent  
and Letting Agent

[dexters.co.uk](http://dexters.co.uk)