



Surbiton, KT6

£1,375,000

Simply one of a kind, this semi-detached house built in 1870 retains many period features and offers four bedrooms.

This fabulous house is perfectly positioned to take advantage of everything that Surbiton has to offer, with the high street and mainline train station both under a mile away.

Features

Stunning Period Property
Semi-Detached
Four Bedrooms
Two Bathrooms
Off Street Parking
Large Rear Garden



Upper Brighton Road, Surbiton, KT6

Accessed through a gated driveway is this striking period home. To the front of the house is a large bay fronted reception room with dual aspect windows and open fireplace. To the rear is a spacious kitchen dining room with fully fitted appliances and the added benefit of a utility room.

Upstairs the space continues to impress, the master bedroom is a fantastic size room with dual aspect windows and a beautiful en-suite shower room. There are three further bedrooms and a family bathroom with stand alone bath and separate shower.

The garden is accessed through French doors from the kitchen and leads to a large decked area, stepping down to a largely laid to lawn rear garden, the perfect place to unwind in the summer.

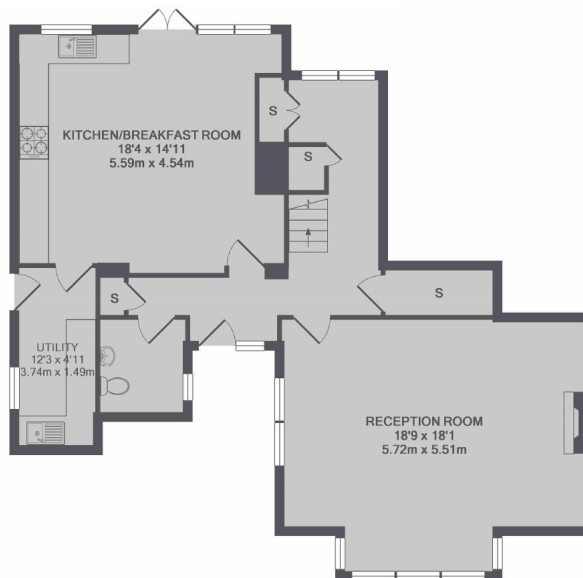




Upper Brighton Road, Surbiton, KT6



1ST FLOOR



GROUND FLOOR

TOTAL APPROX. FLOOR AREA 1743 SQ.FT. (161.9 SQ.M.)

Contact

To arrange a viewing call our office on the number below or visit our website.



Regulated
Estate Agent
and Letting Agent

Energy Rating: E. We aim to make our particulars both accurate and reliable. However they are not guaranteed; nor do they form part of an offer or contract. If you require clarification on any points then please contact us, especially if you're traveling some distance to view. Please note that appliances and heating systems have not been tested and therefore no warranties can be given as to their good working order.