



## Old Palace Terrace, Richmond, TW9

£3,350,000

**Dexters**



## Old Palace Terrace, Richmond, TW9

A stunning Grade II\* listed townhouse with fabulous views across Richmond Green. This beautifully presented and historical William and Mary family home was built in 1692 by local builder William Wollins.

Old Palace Terrace is located in a peaceful corner of The Green. It is within 100 yards of the main shopping street in Richmond and within easy walking distance of Richmond Theatre and the River Thames.

Richmond Green, which is owned by the Crown Estate, has been described as "one of the most beautiful urban greens surviving anywhere in England". It has remained virtually unchanged since the days when a magnificent Tudor Palace stood between the River Thames and The Green.

This five double bedroom property is enhanced by tasteful presentation with the room proportions accentuated by excellent high ceilings. Other notable features include wood panelling, tall sash windows and ornate fireplaces.

### Features

Five Double Bedrooms  
Two Reception Rooms  
Bespoke Fitted Kitchen  
Conservatory  
Three Bathrooms  
Courtyard Garden





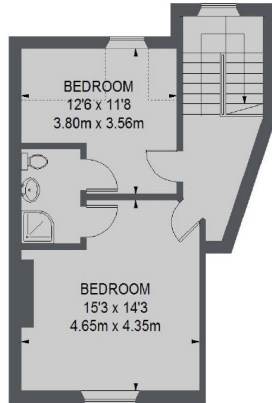




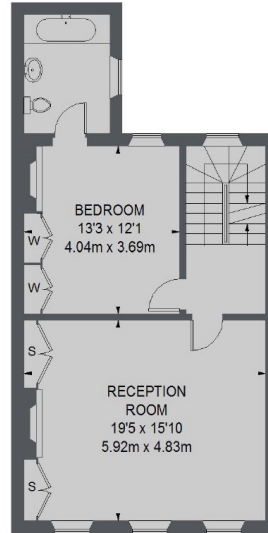





# Old Palace Terrace, Richmond, TW9

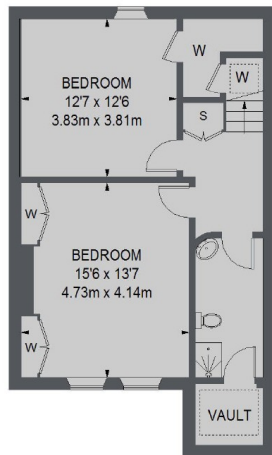


SECOND FLOOR

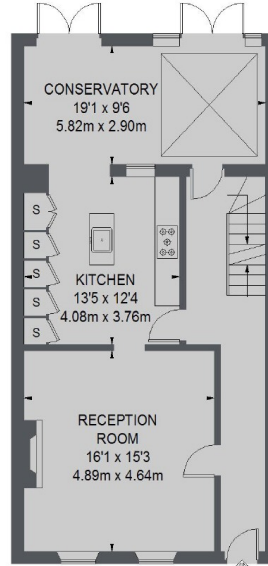


FIRST FLOOR

 = REDUCED HEADROOM  
BELOW 1.5 M / 5'0"



LOWER GROUND FLOOR



GROUND FLOOR

TOTAL APPROX. FLOOR AREA 2472 SQ. FT. (229.69 SQ. M.)  
VAULT = 27 SQ. FT. (2.47 SQ. M.)

**Dexters**

Richmond  
1 Sheen Road, Richmond, TW9  
1AD

Sales  
020 8288 9988

Energy Rating: . We aim to make our particulars both accurate and reliable. However they are not guaranteed; nor do they form part of an offer or contract. If you require clarification on any points then please contact us, especially if you're traveling some distance to view. Please note that appliances and heating systems have not been tested and therefore no warranties can be given as to their good working order.

 **RICS** | Regulated  
Estate Agent  
and Letting Agent

[dexters.co.uk](http://dexters.co.uk)