



North Avenue, W13

Dexters



North Avenue, London, W13

A superb detached five bedroom family home, thoughtfully redesigned with remarkable attention to detail, embracing historical period features with architectural modernism.

The focal point that draws you upon entering is the open plan kitchen and dining area spanning the entire rear width. The hidden kitchen is seamlessly concealed behind dark wood doors with a large bespoke utility area that has been designed for practical purposes. Separated by German engineered full height sliding doors is a landscaped garden that has been fitted with a full irrigation system and evergreen plantation to create a tranquil and relaxed extension to the home.

The first floor has a contemporary family bathroom and four doubles bedrooms all with fireplaces, including the grand master suite incorporating an en suite bathroom and walk in dressing room. The third floor also benefits from its own en suite bathroom, air conditioning and ample eaves storage.

On a tree lined residential road facing the beautiful St Stephens Church, located within walking distance of West Ealing and Ealing Broadway Station.

Features

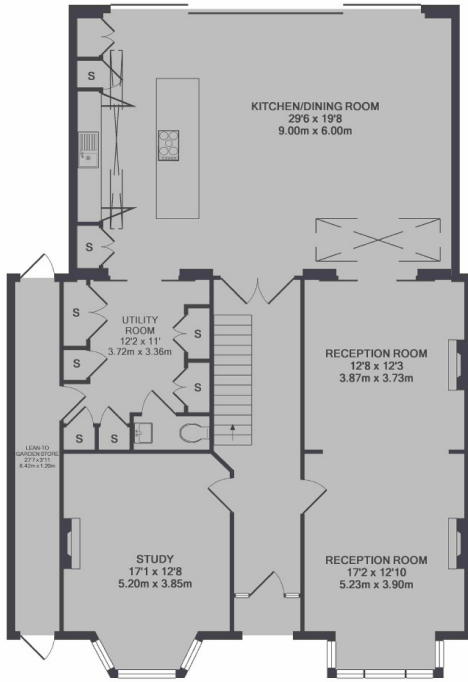
Detached House
Landscaped Gardens
Five Bedrooms
Three Bathrooms
Utility Area
Fully Extended



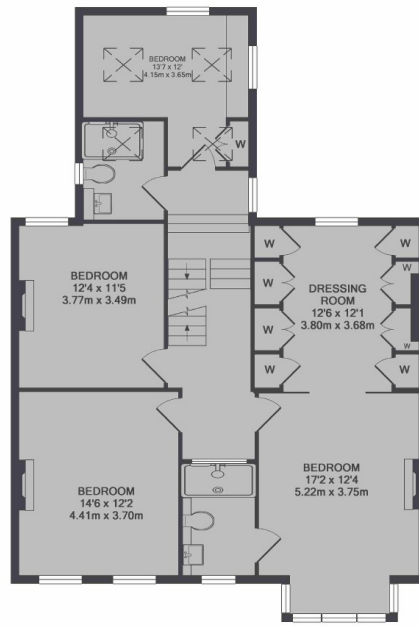




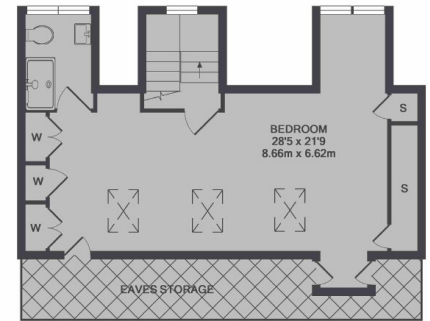
North Avenue, London, W13



GROUND FLOOR



1ST FLOOR



2ND FLOOR

TOTAL APPROX. FLOOR AREA 3258 SQ.FT. (302.7 SQ.M.)

Dexters

Ealing
2 New Ealing Broadway,
Ealing, London, W5 2NU

Sales
020 8810 0909

Energy Rating: D. We aim to make our particulars both accurate and reliable. However they are not guaranteed; nor do they form part of an offer or contract. If you require clarification on any points then please contact us, especially if you're traveling some distance to view. Please note that appliances and heating systems have not been tested and therefore no warranties can be given as to their good working order.

 **RICS** | Regulated
Estate Agent
and Letting Agent

dexters.co.uk