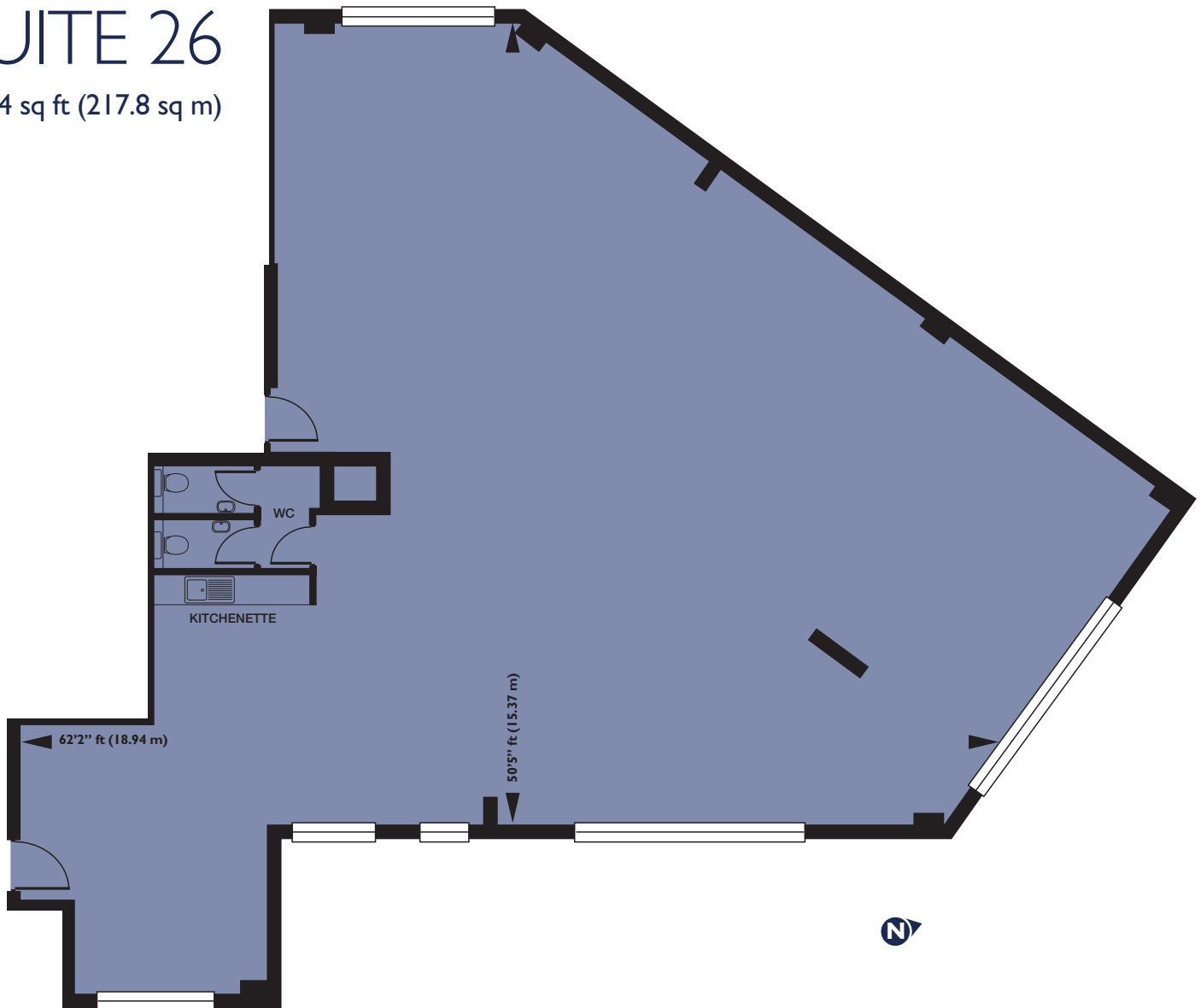


2 STATION COURT FIRST FLOOR

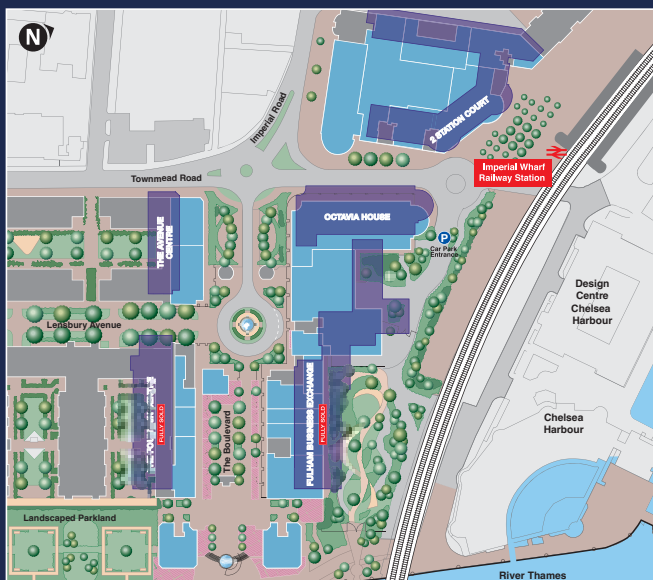
imperialwharf
where the river means business

SUITE 26

2,344 sq ft (217.8 sq m)



The commercial units shown here are for approximate measurements only. Exact layout and sizes of unit detail may vary. All measurements may vary within a tolerance of 5%. Please note: to increase legibility these plans have been sized to fit the page. As a result each plan may be at a different scale to others within this brochure.



- High quality ground floor shared communal entrance lobby
- 8 person passenger lift
- Comfort cooling and heating to each unit
- Fully accessible raised floor
- Suspended ceiling
- Category II lighting
- Double glazing
- Kitchenette and WC facilities
- 24 hour access and concierge
- On-site parking

Contact Boston Gilmore or Knight Frank for further details:

