

**move**.uk.net

Property Sales & Lettings



Move  
1 The Clarence  
Clarence Parade  
Cheltenham  
Gloucestershire  
GL50 3NY

Office: +44 (0) 1242 257333



## Kempley Close Cheltenham, GL52 5GB

**£230,000**

Proudly presented by Move Estate Agents; this well presented, three bedroom semi-detached house is set over two floors. Located in this increasingly popular Oakley development in Cheltenham.

**\*No Onward Chain\***

**Three Bedroom**

**Well Maintained Garden**

**Modern Semi Detached Home**

**Allocated Parking and Garage**

**Entrance Hall**

**Sitting Room** 15' 0" x 10' 0" (4.57m x 3.05m)

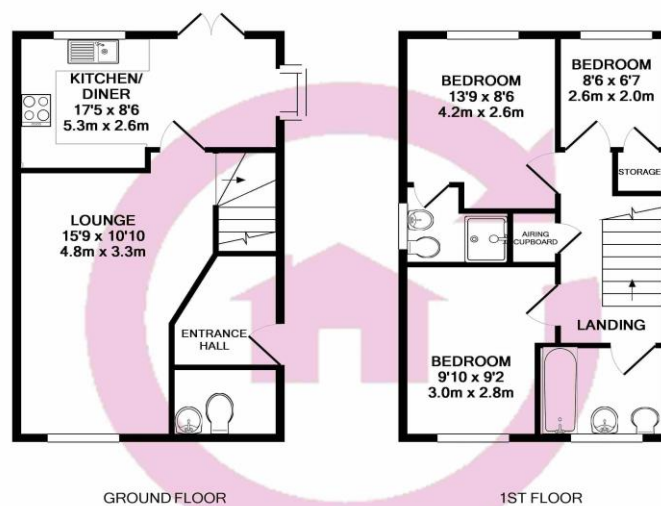
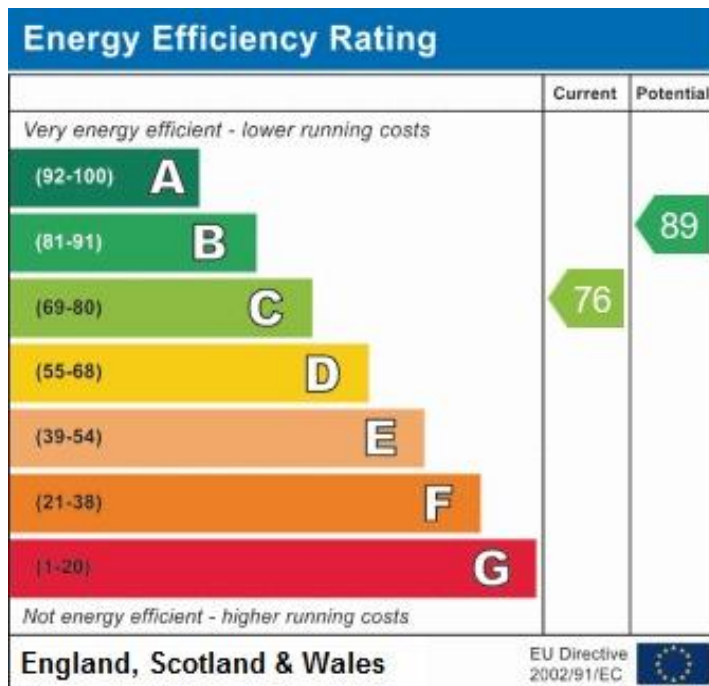
**Kitchen/Diner** 17' 0" x 8' 0" (5.18m x 2.44m)

**Master Bedroom** 13' 0" x 8' 0" (3.96m x 2.44m)

**Bedroom Two** 9' 0" x 9' 0" (2.74m x 2.74m)

**Bedroom Three** 8' 0" x 6' 0" (2.44m x 1.83m)

**Bathroom**



Whilst every attempt has been made to ensure the accuracy of the floor plan contained here, measurements of doors, windows, rooms and any other items are approximate and no responsibility is taken for any error, omission, or mis-statement. This plan is for illustrative purposes only and should be used as such by any prospective purchaser. The services, systems and appliances shown have not been tested and no guarantee as to their operability or efficiency can be given.  
 Made with Metropix ©2017