



Manchester Road, E14

£2,150,000

Offering over 1900 Sq Ft of ample living space over four floors is this imposing period home moments away from Canary Wharf. Further selling features to include private rear garden, two balconies and roof terrace.

Manchester Road is just moments away from Canary Wharf which offers superb links to the City.

Features

- Four Double Bedrooms
- Two Balconies
- Large Roof Terrace
- Over 1900 Sq Ft
- Private Rear Garden
- Stunning Views



Manchester Road, London, E14

Well presented and located in prime position for Canary Wharf this family home will appeal to buyers that are wanting the perfect work-life balance.

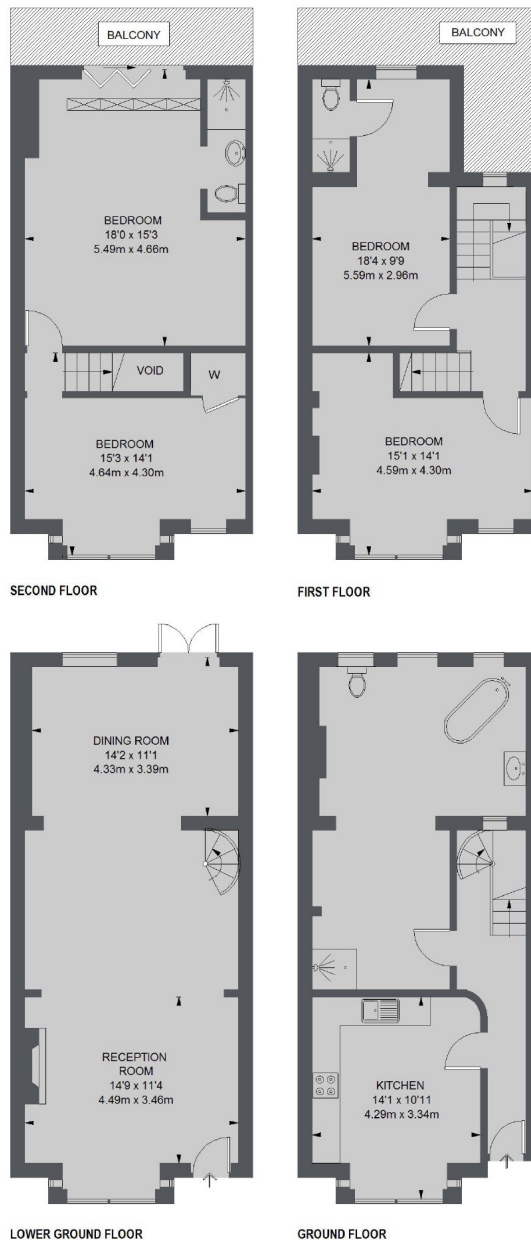
Accommodation comprises of entrance hall leading to kitchen/breakfast room and main bathroom, spiral staircase to lower ground floor which leads to large reception area with access to utility room, dining area with French doors leading to private garden.

To the first floor bedroom two with en-suite shower room and access to balcony, bedroom four and staircase to the second floor. The top floor consists of bedroom three and master bedroom with en-suite area and bi folding doors leading to balcony. Access to the roof terrace is from the main bedroom which offers views of Canary Wharf and the River Thames.





Manchester Road, London, E14



TOTAL APPROX. FLOOR AREA (EXCLUDING VOID)
1945 SQ. FT. (180.69 SQ. M.)

Contact

To arrange a viewing call our office on the number below or visit our website.



Energy Rating: D. We aim to make our particulars both accurate and reliable. However they are not guaranteed; nor do they form part of an offer or contract. If you require clarification on any points then please contact us, especially if you're traveling some distance to view. Please note that appliances and heating systems have not been tested and therefore no warranties can be given as to their good working order.